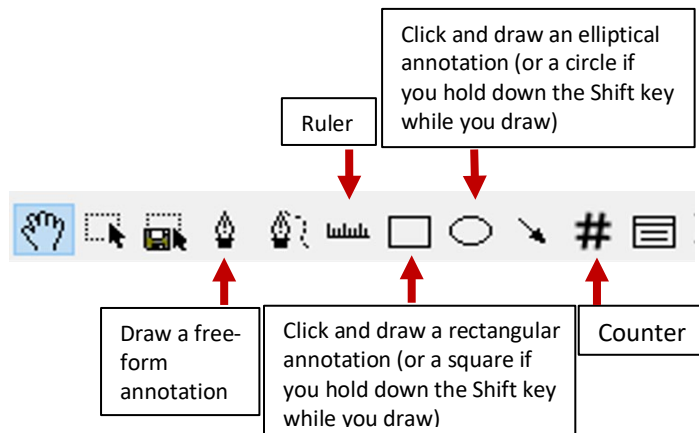


Supplemental Digital Content

The Supplemental Digital Content was not copyedited by *Archives of Pathology & Laboratory Medicine*.

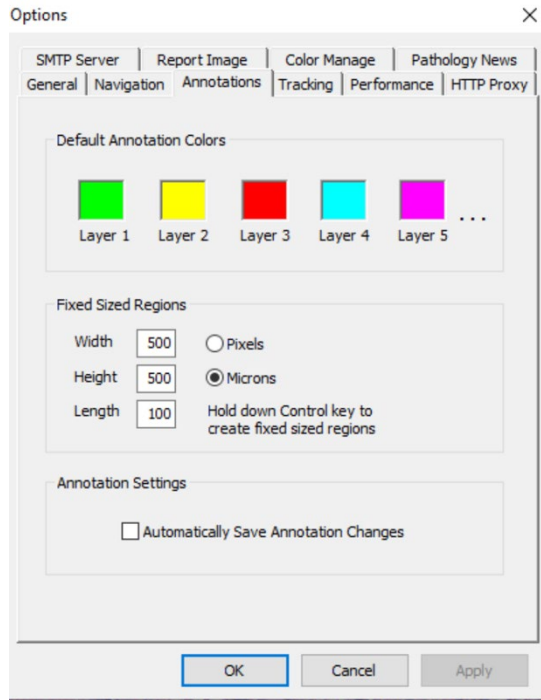
1. Using ImageScope tool bar.



- 1) Using free-form pen to draw free-form annotation – click on the **Pen** tool on the toolbar and draw.
- 2) Drawing rectangle/ellipse annotation – Select the or icon and draw.
- 3) Counter tool – Click to mark the image with a numbered annotation. Counters are numbered automatically in the order they are placed. Each annotation layer can contain a separate set of counters, as shown in Figure 2.

2. Drawing fixed size annotations:

- 1) To set a fixed size for annotations, **Tools** → **Options** → **Annotations** → **check Microns** → **Specify width and height** → **“OK”** (as shown below).
- 2) When draw an annotation, click or , hold **Control**, and click the area of interest.



3. Move annotation – Select the annotation you want to move. Hold down **Control** and drag the annotation to the desired area of interest. To move multiple annotations, hold down **Shift** to select multiple annotations, hold **Shift and Control**, and then drag the annotations.

Table 1 Setup for annotated shapes and area of each shape

	1 rectangle in figure 6C	1 square in Figure 4 and 5A	2 squares	3 circles in Figure 6F	4 squares in Figure 5B, 6B and 6D	5 circles in Figure 5C, 6A and 6E
Area per rectangle /circle / square (mm ²)	1	1	0.5	0.33	0.25	0.20
Annotation setting W (µm)	1800	1000	707	652	500	505
Annotation setting H (µm)	555	1000	707	652	500	505