

Supplemental Digital Content, containing two Figures

The Supplemental Digital Content was not copyedited by
Archives of Pathology & Laboratory Medicine.

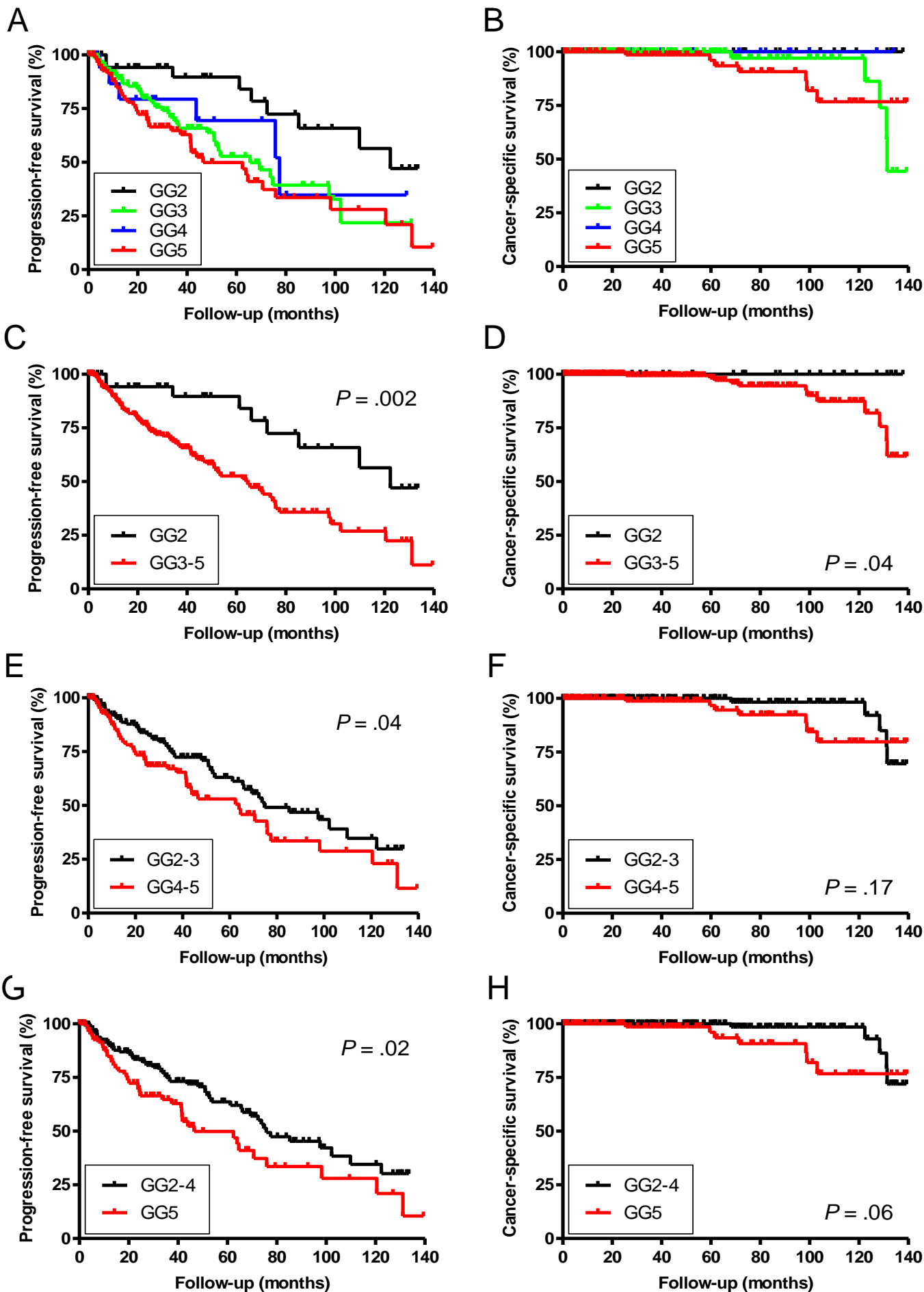


Figure S1. Kaplan-Meier curves for progression-free survival (A, C, E, G) or cancer-specific survival (B, D, F, H) in all pT3b patients, according to the tumor grade in radical prostatectomy specimens. GG2 (n=38) vs. GG3 (n=104) vs. GG4 (n=17) vs. GG5 (n=89) (A, B), GG2 (n=38) vs. GG3-5 (n=210) (C, D), GG2-3 (n=142) vs. GG4-5 (n=106) (E, F), or GG2-4 (n=159) vs. GG5 (n=89) were compared, using the log-rank test.

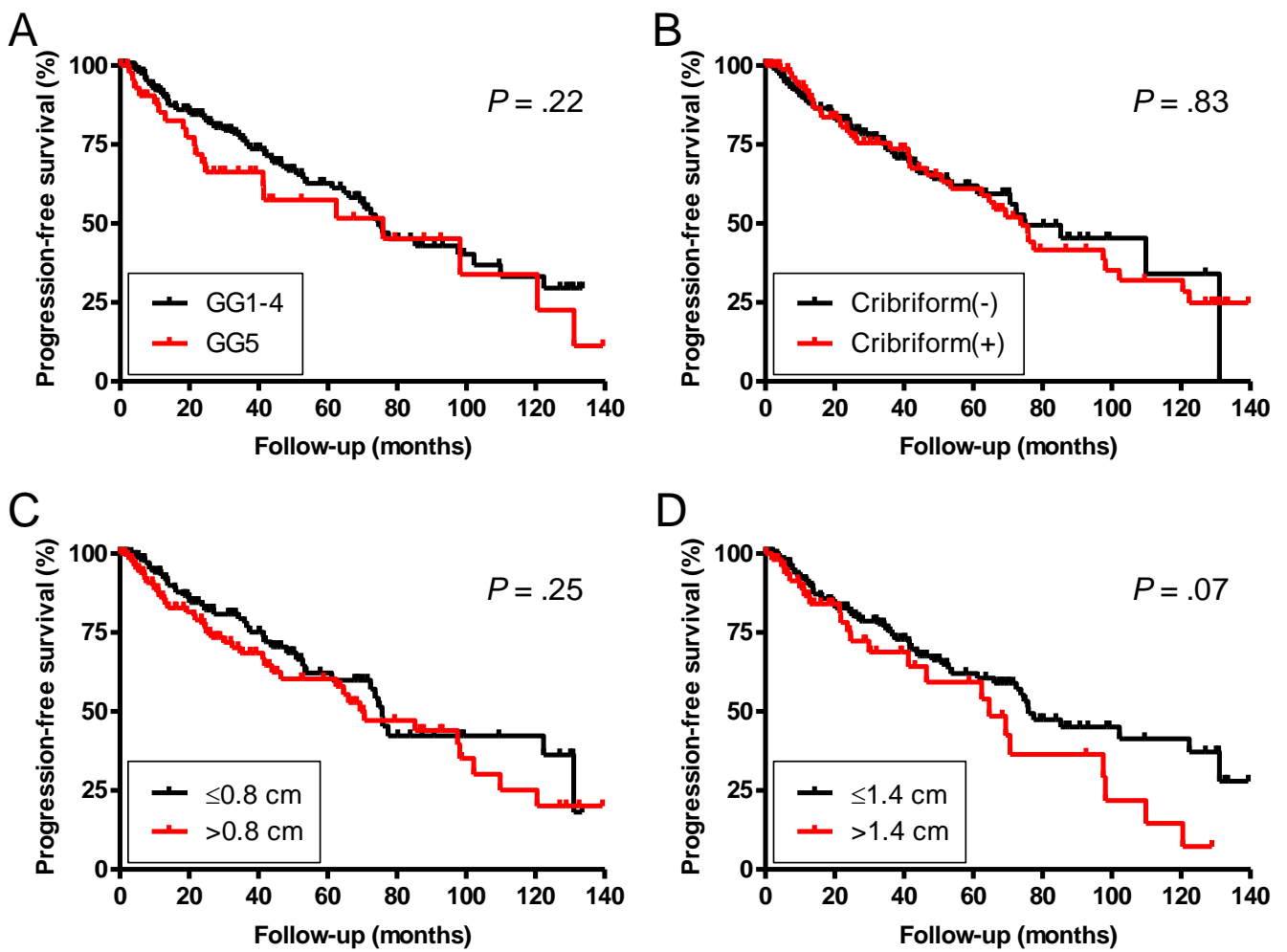


Figure S2. Kaplan-Meier curves for progression-free survival in pT3b patients, according to the tumor characteristics at seminal vesicle invasion. GG1-4 ($n=175$) vs. GG5 ($n=47$) (A), no cribriform morphology ($n=137$) vs. cribriform morphology ($n=85$) (B), total tumor size of ≤ 0.8 cm ($n=112$) vs. >0.8 cm ($n=110$) (C), or total tumor size of ≤ 1.4 cm ($n=168$) vs. >1.4 cm ($n=54$) (D) were compared, using the log-rank test.