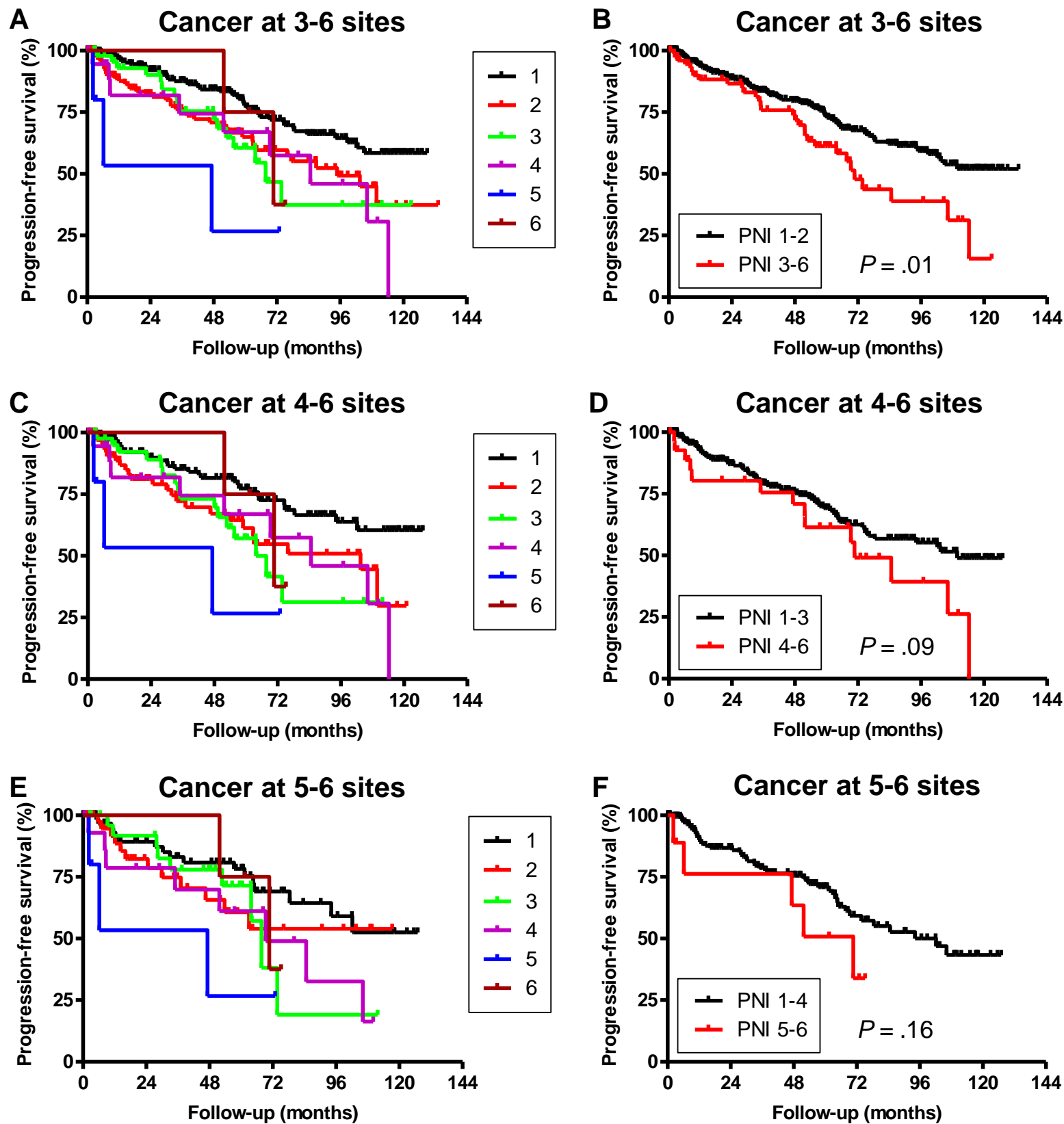
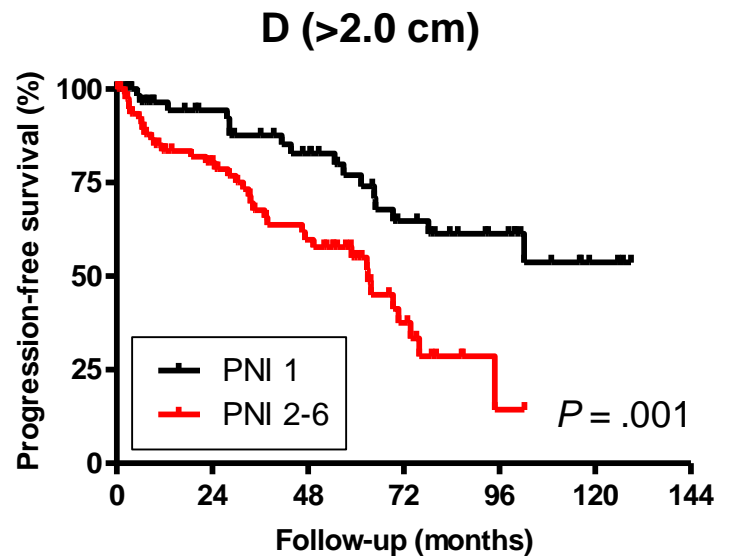
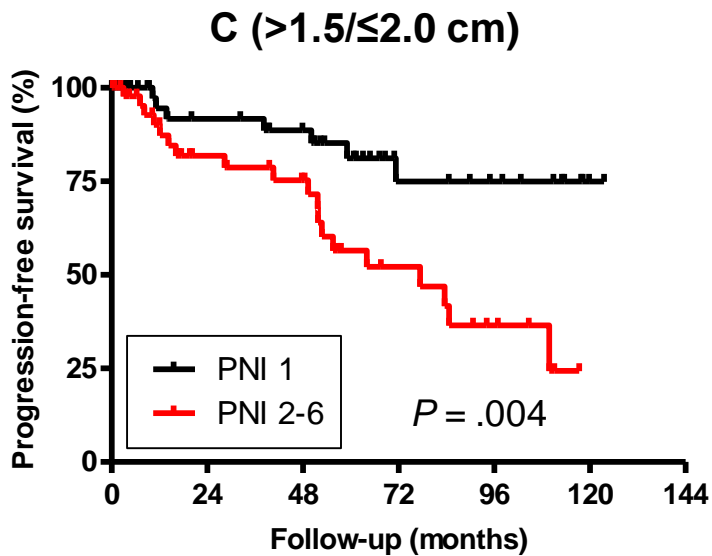
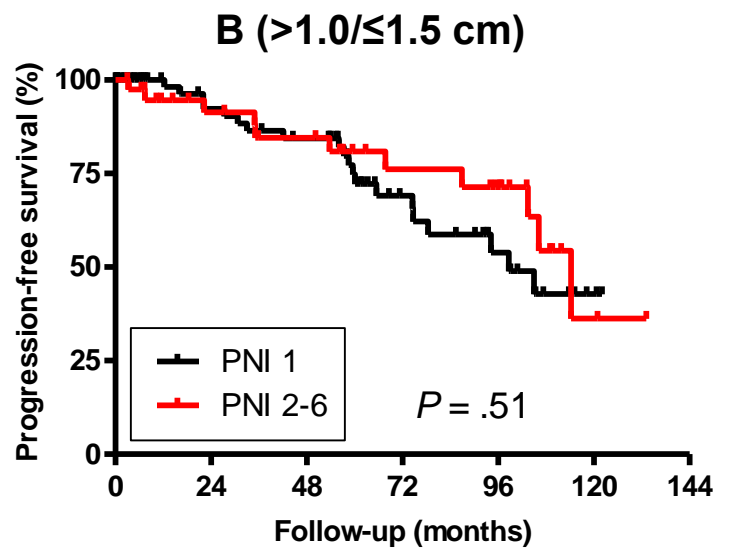
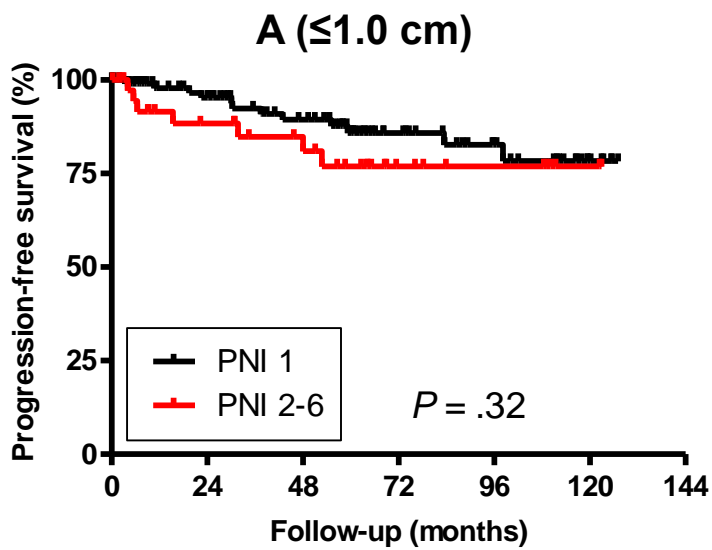


**Supplemental Digital Content,
containing 4 Figures and 14 Tables**

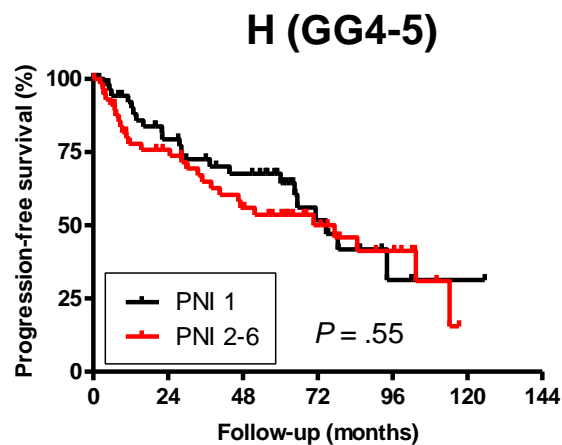
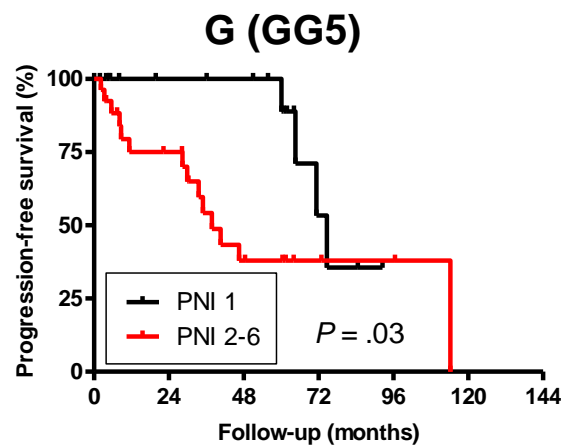
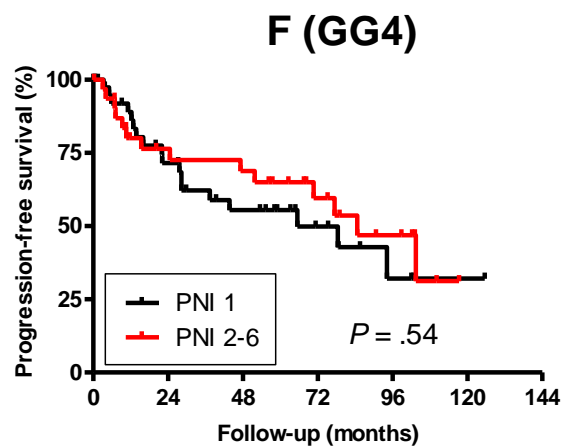
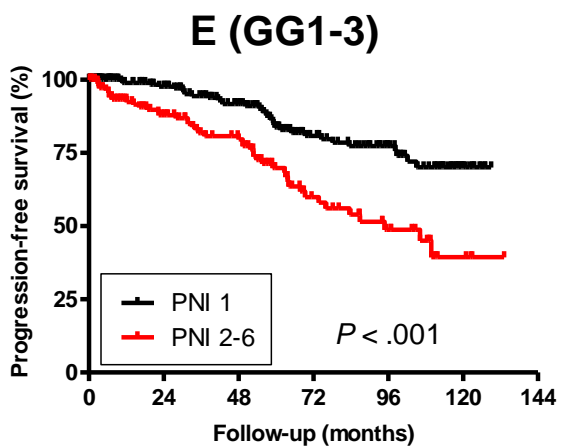
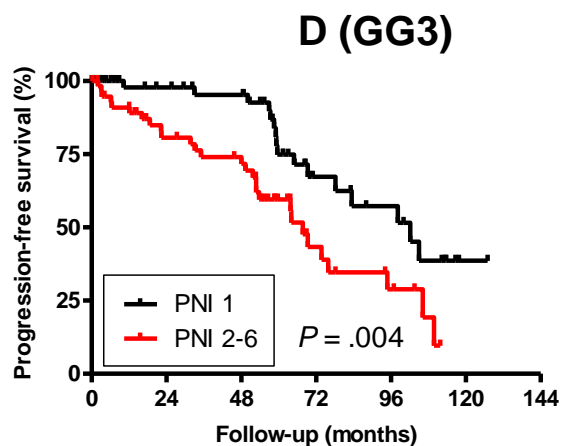
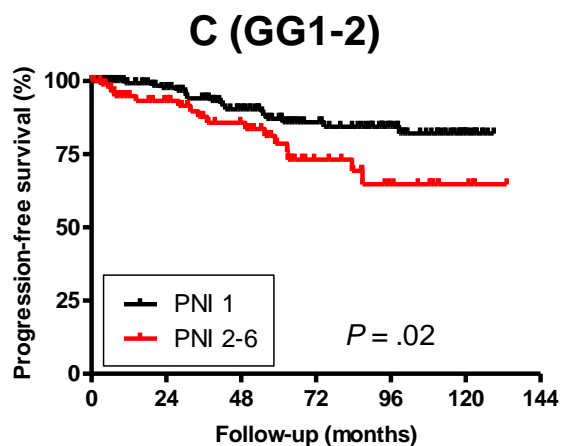
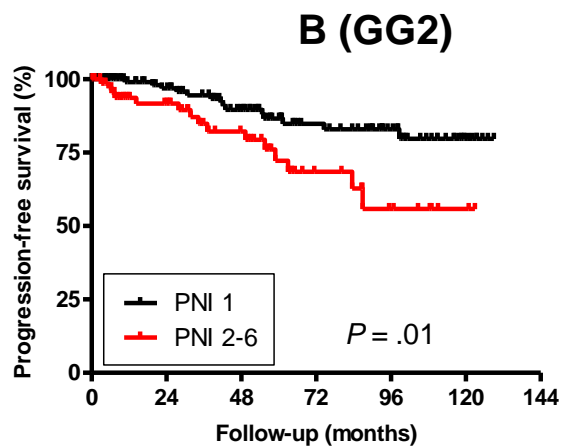
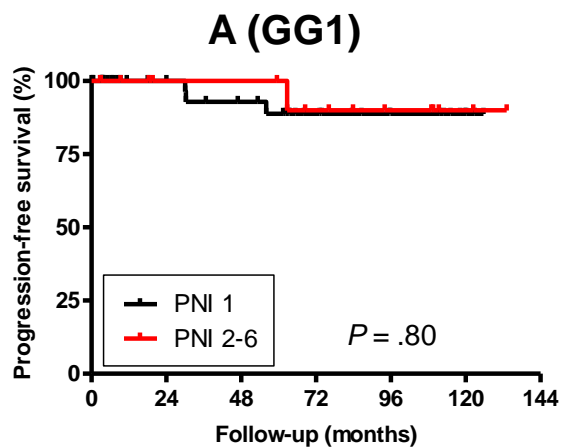
The Supplemental Digital Content was not copyedited by
Archives of Pathology & Laboratory Medicine.



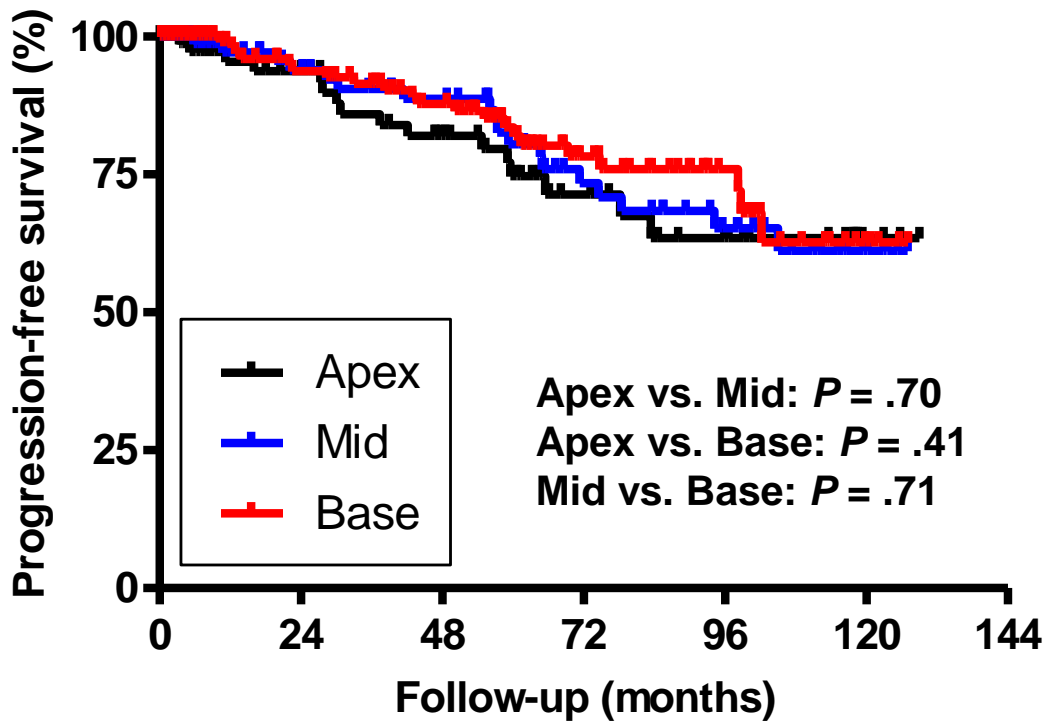
Supplemental Figure 1. Kaplan-Meier curves for progression-free survival stratified by 1 (n=223) vs. 2 (n=121) vs. 3 (n=47) vs. 4 (n=19) vs. 5 (n=5) vs. 6 (n=4) PNIs (A) or 1-2 (n=344) vs. 3-6 (n=75) PNIs (B) in patients with cancer at 3-6 biopsy sites, 1 (n=121) vs. 2 (n=74) vs. 3 (n=42) vs. 4 (n=19) vs. 5 (n=5) vs. 6 (n=4) PNIs (C) or 1-3 (n=237) vs. 4-6 (n=28) PNIs (D) in patients with cancer at 4-6 biopsy sites, or 1 (n=67) vs. 2 (n=41) vs. 3 (n=27) vs. 4 (n=15) vs. 5 (n=5) vs. 6 (n=4) PNIs (E) or 1-4 (n=150) vs. 5-6 (n=9) PNIs (F) in patients with cancer at 5-6 biopsy sites. Comparisons between two groups were made by the log-rank test.



Supplemental Figure 2. Kaplan-Meier curves for progression-free survival stratified by 1 vs. 2-6 PNIs in patients showing cancer at 2-6 biopsy sites with an average tumor length/positive site of ≤ 1.0 cm (**A**; $n=100$ vs. $n=40$), $>1.0/\leq 1.5$ cm (**B**; $n=71$ vs. $n=40$), $>1.5/\leq 2.0$ cm (**C**; $n=51$ vs. $n=47$), or >2.0 cm (**D**; $n=68$ vs. $n=80$). Comparisons between two groups were made by the log-rank test.



Supplemental Figure 3. Kaplan-Meier curves for progression-free survival stratified by 1 vs. 2-6 PNIs in subgroups of patients with GG1 (A), GG2 (B), GG1-2 (C), GG3 (D), GG1-3 (E), GG4 (F), GG5 (G), or GG4-5 (H) tumor identified at 2-6 biopsy sites. Comparisons between two groups were made by the log-rank test.



Supplemental Figure 4. Kaplan-Meier curves for progression-free survival stratified by the location of PNI in 290 patients showing cancer at 2-6 biopsy sites as well as PNI at only 1 site. Comparisons between two groups were made by the log-rank test.

Supplemental Table 1. Clinicopathologic features of 497 patients.

Age at biopsy [mean / median (IQR), year]	62.4 / 63 (10)
Preoperative PSA [mean / median (IQR), ng/mL]	8.8 / 6.0 (4.2)
Sites with cancer	
2	78 (15.7%)
3	154 (31.0%)
4	106 (21.3%)
5	78 (15.7%)
6	81 (16.3%)
Sites with PNI	
1	290 (58.4%)
2	132 (26.6%)
3	47 (9.5%)
4	19 (3.8%)
5	5 (1.0%)
6	4 (0.8%)
Biopsy Grade Group (highest)	
1	60 (12.1%)
2	197 (39.6%)
3	123 (24.7%)
4	70 (14.1%)
5	47 (9.5%)
cT stage (prior to prostatectomy)	
1c	205 (41.2%)
2	285 (57.3%)
3	7 (1.4%)
cN stage (prior to prostatectomy)	
0 / X	494 (81.6%)
1	3 (14.5%)
Prostatectomy Grade Group	
1	19 (3.8%)
2	247 (49.7%)
3	150 (30.2%)
4	18 (3.6%)
5	63 (12.7%)
pT stage	
2 / 2+	166 (33.4%)
3a	240 (48.3%)
3b	91 (18.3%)
pN stage	
0	407 (81.9%)
1	76 (15.3%)
X	14 (2.8%)
Surgical margin	
Negative	399 (80.3%)
Positive	98 (19.7%)
Tumor volume [mean / median (IQR), cm ³]	11.3 / 8.1 (9.3)

PSA, prostate-specific antigen; PNI, perineural invasion

Supplemental Table 2. Clinicopathologic findings in cases with cancer at 2-6 sextant biopsy sites showing 1 vs. 2 vs. 3 vs. 4 vs. 5 vs. 6 PNI sites.

	1 PNI (N=290)	2 PNIs (N=132)	3PNIs (N=47)	4 PNIs (N=19)	5 PNIs (N=5)	6 PNIs (N=4)
Age [mean / median (IQR), year]	62.2 / 62 (9)	62.5 / 63 (8.75)	63.1 / 63 (11)	64.2 / 64 (8)	61.8 / 62 (14.5)	62.5 / 62.5 (13)
PSA [mean / median (IQR), ng/mL]	7.8 / 5.6 (3.9)	8.3 / 6.0 (4.8)	8.5 / 6.7 (4.2)	18.5 / 6.1 (6.6)	39.0 / 30.4 (67.8)	17.2 / 8.9 (30.7)
Biopsy Grade Group						
1	44 (15.2%)	15 (11.4%)	1 (2.1%)	0 (0%)	0 (0%)	0 (0%)
2	123 (42.4%)	49 (37.1%)	20 (42.6%)	4 (21.1%)	1 (20.0%)	0 (0%)
3	65 (22.4%)	33 (25.0%)	19 (40.4%)	5 (26.3%)	1 (20.0%)	0 (0%)
4	40 (13.8%)	21 (15.9%)	2 (4.3%)	5 (26.3%)	1 (20.0%)	1 (25.0%)
5	18 (6.2%)	14 (10.6%)	5 (10.6%)	5 (26.3%)	2 (40.0%)	3 (75.0%)
cT (prior to prostatectomy)						
1c	130 (44.8%)	52 (39.4%)	16 (34.0%)	7 (36.8%)	0 (0%)	0 (0%)
2	156 (53.8%)	78 (59.1%)	30 (63.8%)	12 (63.2%)	5 (100%)	4 (100%)
3	4 (1.4%)	2 (1.5%)	1 (2.1%)	0 (0%)	0 (0%)	0 (0%)
cN (prior to prostatectomy)						
0 or X	287 (99.0%)	132 (100%)	47 (100%)	19 (100%)	5 (100%)	4 (100%)
1	3 (1.0%)	0 (0%)	0 (0%)	0 (0%)	0 (0%)	0 (0%)
Prostatectomy Grade Group						
1	15 (5.2%)	3 (2.3%)	1 (2.1%)	0 (0%)	0 (0%)	0 (0%)
2	152 (52.4%)	66 (50.0%)	24 (51.1%)	5 (26.3%)	0 (0%)	0 (0%)
3	85 (29.3%)	40 (30.3%)	13 (27.7%)	8 (42.1%)	3 (60.0%)	1 (25.0%)
4	10 (3.4%)	5 (3.8%)	3 (6.4%)	0 (0%)	0 (0%)	0 (0%)
5	28 (9.7%)	18 (13.6%)	6 (12.8%)	6 (31.6%)	2 (40.0%)	3 (75.0%)
pT						
2 / 2+	120 (41.4%)	34 (25.8%)	10 (21.3%)	1 (5.3%)	1 (20.0%)	0 (0%)
3a	132 (45.5%)	75 (56.8%)	20 (42.6%)	10 (52.6%)	1 (20.0%)	2 (50.0%)
3b	38 (13.1%)	23 (17.4%)	17 (36.2%)	8 (42.1%)	3 (60.0%)	2 (50.0%)
pN						
0	250 (86.2%)	101 (76.5%)	39 (83.0%)	12 (63.2%)	3 (60.0%)	2 (50.0%)
1	31 (10.7%)	27 (20.5%)	7 (14.9%)	7 (36.8%)	2 (40.0%)	2 (50.0%)
X	9 (3.1%)	4 (3.0%)	1 (2.1%)	0 (0%)	0 (0%)	0 (0%)
Surgical margin						
Negative	244 (84.1%)	101 (76.5%)	35 (74.5%)	12 (63.2%)	4 (80.0%)	3 (75.0%)
Positive	46 (15.9%)	31 (23.5%)	12 (25.5%)	7 (36.8%)	1 (20.0%)	1 (25.0%)
Tumor volume [mean / median (IQR), cm ³]	9.8 / 6.4 (7.6)	12.0 / 9.3 (9.3)	15.3 / 12.0 (11.5)	12.5 / 9.8 (5.2)	24.4 / 18.0 (29.2)	28.7 / 28.1 (27.3)

PSA, prostate-specific antigen; PNI, perineural invasion

Supplemental Table 3. Clinicopathologic findings in cases with cancer at 3-6 sextant biopsy sites showing 1 vs. 2-6 PNIs.

	1 PNI (N=223)	2-6 PNIs (N=196)	P
Age [mean / median (IQR), year]	62.2 / 62 (9)	62.9 / 63 (9)	.35
PSA [mean / median (IQR), ng/mL]	8.0 / 5.7 (3.7)	10.5 / 6.3 (4.9)	.02
Biopsy Grade Group			.096
1	26 (11.7%)	13 (6.6%)	
2	94 (42.2%)	69 (35.2%)	
3	52 (23.3%)	56 (28.6%)	
4	37 (16.6%)	31 (15.8%)	
5	14 (6.3%)	27 (13.8%)	
Prostatectomy Grade Group			.11
1	8 (3.6%)	4 (2.0%)	
2	110 (49.3%)	86 (43.9%)	
3	73 (32.7%)	63 (32.1%)	
4	8 (3.6%)	8 (4.1%)	
5	24 (10.8%)	35 (17.9%)	
pT			<.001
2 / 2+	83 (37.2%)	43 (21.9%)	
3a	107 (48.0%)	100 (51.0%)	
3b	33 (14.8%)	53 (27.0%)	
pN			.02
0	188 (84.3%)	148 (75.5%)	
1	30 (13.5%)	44 (22.4%)	
X	5 (2.2%)	4 (2.0%)	
Surgical margin			.06
Negative	182 (81.6%)	145 (74.0%)	
Positive	41 (18.4%)	51 (26.0%)	
Tumor volume [mean / median (IQR), cm ³]	10.6 / 7.0 (8.6)	13.9 / 10.4 (9.7)	<.001

PSA, prostate-specific antigen; PNI, perineural invasion

Supplemental Table 4. Clinicopathologic findings in cases with cancer at 4-6 sextant biopsy sites showing 1 vs. 2-6 PNIs.

	1 PNI (N=121)	2-6 PNIs (N=144)	P
Age [mean / median (IQR), year]	61.4 / 62 (8.5)	62.9 / 63 (9.75)	.08
PSA [mean / median (IQR), ng/mL]	8.5 / 6.0 (3.9)	11.5 / 6.7 (4.9)	.06
Biopsy Grade Group			.06
1	18 (14.9%)	10 (6.9%)	
2	48 (39.7%)	45 (31.3%)	
3	25 (20.7%)	41 (28.5%)	
4	20 (16.5%)	25 (17.4%)	
5	10 (8.3%)	23 (16.0%)	
Prostatectomy Grade Group			.06
1	6 (5.0%)	3 (2.1%)	
2	61 (50.4%)	57 (39.6%)	
3	36 (29.8%)	50 (34.7%)	
4	3 (2.5%)	6 (4.2%)	
5	15 (12.4%)	28 (19.4%)	
pT			.002
2 / 2+	43 (35.5%)	29 (20.1%)	
3a	57 (47.1%)	66 (45.8%)	
3b	21 (17.4%)	49 (34.0%)	
pN			.22
0	96 (79.3%)	108 (75.0%)	
1	20 (16.5%)	33 (22.9%)	
X	5 (4.1%)	3 (2.1%)	
Surgical margin			.39
Negative	93 (76.9%)	104 (72.2%)	
Positive	28 (23.1%)	40 (27.8%)	
Tumor volume [mean / median (IQR), cm ³]	13.0 / 9.3 (11.5)	15.6 / 11.7 (11.4)	.02

PSA, prostate-specific antigen; PNI, perineural invasion

Supplemental Table 5. Clinicopathologic findings in cases with cancer at 5-6 sextant biopsy sites showing 1 vs. 2-6 PNIs.

	1 PNI (N=67)	2-6 PNIs (N=92)	P
Age [mean / median (IQR), year]	61.6 / 62 (7)	63.2 / 64 (9.75)	.14
PSA [mean / median (IQR), ng/mL]	7.9 / 6.3 (4.0)	12.8 / 6.8 (4.7)	.11
Biopsy Grade Group			.21
1	9 (13.4%)	5 (5.4%)	
2	22 (32.8%)	28 (30.4%)	
3	15 (22.4%)	26 (28.3%)	
4	15 (22.4%)	16 (17.4%)	
5	6 (9.0%)	17 (18.5%)	
Prostatectomy Grade Group			.30
1	2 (3.0%)	2 (2.2%)	
2	30 (44.8%)	33 (35.9%)	
3	25 (37.3%)	35 (38.0%)	
4	2 (3.0%)	3 (3.3%)	
5	8 (11.9%)	19 (20.7%)	
pT			.02
2 / 2+	20 (29.9%)	17 (18.5%)	
3a	33 (49.3%)	37 (40.2%)	
3b	14 (20.9%)	38 (41.3%)	
pN			.20
0	53 (79.1%)	65 (70.7%)	
1	13 (19.4%)	26 (28.3%)	
X	1 (1.5%)	1 (1.1%)	
Surgical margin			.58
Negative	50 (74.6%)	65 (70.7%)	
Positive	17 (25.4%)	27 (29.3%)	
Tumor volume [mean / median (IQR), cm ³]	14.5 / 10.5 (12.2)	17.6 / 12.7 (14.4)	.06

PSA, prostate-specific antigen; PNI, perineural invasion

Supplemental Table 6. Clinicopathologic findings in cases with cancer at 6 sextant biopsy sites showing 1 vs. 2-6 PNIs.

	1 PNI (N=31)	2-6 PNIs (N=50)	P
Age [mean / median (IQR), year]	61.5 / 62 (6)	63..2 / 63 (10.25)	.26
PSA [mean / median (IQR), ng/mL]	8.6 / 6.2 (4.2)	16.8 / 7.0 (9.2)	.11
Biopsy Grade Group			.23
1	3 (9.7%)	1 (2.0%)	
2	12 (38.7%)	14 (28.0%)	
3	8 (25.8%)	16 (32.0%)	
4	5 (16.1%)	8 (16.0%)	
5	3 (9.7%)	11 (22.0%)	
Prostatectomy Grade Group			.04
1	1 (3.2%)	1 (2.0%)	
2	15 (48.4%)	11 (22.0%)	
3	9 (29.0%)	23 (46.0%)	
4	1 (3.2%)	1 (2.0%)	
5	5 (16.1%)	14 (28.0%)	
pT			.19
2 / 2+	8 (25.8%)	7 (14.0%)	
3a	14 (45.2%)	19 (38.0%)	
3b	9 (29.0%)	24 (48.0%)	
pN			.59
0	24 (77.4%)	36 (72.0%)	
1	7 (22.6%)	14 (28.0%)	
X	0 (0%)	0 (0%)	
Surgical margin			.11
Negative	24 (77.4%)	30 (60.0%)	
Positive	7 (22.6%)	20 (40.0%)	
Tumor volume [mean / median (IQR), cm ³]	16.4 / 10.5 (9.5)	21.2 / 15.8 (17.9)	.08

PSA, prostate-specific antigen; PNI, perineural invasion

Supplemental Table 7. Clinicopathologic findings in cases with Grade Group 1 cancer at 2-6 sextant biopsy sites showing 1 vs. 2-6 PNIs.

	1 PNI (N=44)	2-6 PNIs (N=16)	P
Age [mean / median (IQR), year]	59.0 / 59 (12.5)	61.1 / 62 (10.75)	.34
PSA [mean / median (IQR), ng/mL]	5.7 / 4.9 (2.8)	6.2 / 5.1 (1.8)	.67
Biopsy Grade Group			NA
1	44 (100%)	16 (100%)	
2	NA	NA	
3	NA	NA	
4	NA	NA	
5	NA	NA	
Prostatectomy Grade Group			>.99
1	13 (29.5%)	4 (25.0%)	
2	30 (68.2%)	12 (75.0%)	
3	1 (2.3%)	0 (0%)	
4	0 (0%)	0 (0%)	
5	0 (0%)	0 (0%)	
pT			.22
2 / 2+	31 (70.5%)	8 (50.0%)	
3a	13 (29.5%)	8 (50.0%)	
3b	0 (0%)	0 (0%)	
pN			>.99
0	38 (86.4%)	13 (81.3%)	
1	1 (2.3%)	0 (0%)	
X	5 (11.4%)	3 (18.8%)	
Surgical margin			>.99
Negative	40 (90.9%)	15 (93.8%)	
Positive	4 (9.1%)	1 (6.3%)	
Tumor volume [mean / median (IQR), cm ³]	5.9 / 5.2 (5.2)	6.4 / 6.0 (6.6)	.34

PSA, prostate-specific antigen; PNI, perineural invasion; NA, not applicable

Supplemental Table 8. Clinicopathologic findings in cases with Grade Group 2 cancer at 2-6 sextant biopsy sites showing 1 vs. 2-6 PNIs.

	1 PNI (N=123)	2-6 PNIs (N=74)	P
Age [mean / median (IQR), year]	61.9 / 62 (9)	62.5 / 63.5 (8.25)	.58
PSA [mean / median (IQR), ng/mL]	6.4 / 5.3 (2.7)	7.7 / 5.9 (3.5)	.19
Biopsy Grade Group			NA
1	NA	NA	
2	123 (100%)	74 (100%)	
3	NA	NA	
4	NA	NA	
5	NA	NA	
Prostatectomy Grade Group			.86
1	2 (1.6%)	0 (0%)	
2	95 (77.2%)	57 (77.0%)	
3	26 (21.1%)	17 (23.0%)	
4	0 (0%)	0 (0%)	
5	0 (0%)	0 (0%)	
pT			.006
2 / 2+	64 (52.0%)	26 (35.1%)	
3a	55 (44.7%)	38 (51.4%)	
3b	4 (3.3%)	10 (13.5%)	
pN			.06
0	116 (94.3%)	64 (86.5%)	
1	4 (3.3%)	8 (10.8%)	
X	3 (2.4%)	2 (2.7%)	
Surgical margin			.72
Negative	107 (87.0%)	63 (85.1%)	
Positive	16 (13.0%)	11 (14.9%)	
Tumor volume [mean / median (IQR), cm ³]	7.7 / 6.1 (6.2)	9.7 / 8.5 (8.3)	.02

PSA, prostate-specific antigen; PNI, perineural invasion; NA, not applicable

Supplemental Table 9. Clinicopathologic findings in cases with Grade Group 1-2 cancer at 2-6 sextant biopsy sites showing 1 vs. 2-6 PNIs.

	1 PNI (N=167)	2-6 PNIs (N=90)	P
Age [mean / median (IQR), year]	61.1 / 62 (11)	62.2 / 63 (8.5)	.24
PSA [mean / median (IQR), ng/mL]	6.2 / 5.2 (2.8)	7.4 / 5.7 (3.0)	.14
Biopsy Grade Group			.13
1	44 (26.3%)	16 (17.8%)	
2	123 (73.7%)	74 (82.2%)	
3	NA	NA	
4	NA	NA	
5	NA	NA	
Prostatectomy Grade Group			.61
1	15 (9.0%)	4 (4.4%)	
2	125 (74.9%)	69 (76.7%)	
3	27 (16.2%)	17 (18.9%)	
4	0 (0%)	0 (0%)	
5	0 (0%)	0 (0%)	
pT			.001
2 / 2+	95 (56.9%)	34 (37.8%)	
3a	68 (40.7%)	46 (51.1%)	
3b	4 (2.4%)	10 (11.1%)	
pN			.07
0	154 (92.2%)	77 (85.6%)	
1	5 (3.0%)	8 (8.9%)	
X	8 (4.8%)	5 (5.6%)	
Surgical margin			.75
Negative	147 (88.0%)	78 (86.7%)	
Positive	20 (12.0%)	12 (13.3%)	
Tumor volume [mean / median (IQR), cm ³]	7.3 / 5.8 (5.5)	9.1 / 8.0 (7.2)	.008

PSA, prostate-specific antigen; PNI, perineural invasion; NA, not applicable

Supplemental Table 10. Clinicopathologic findings in cases with Grade Group 3 cancer at 2-6 sextant biopsy sites showing 1 vs. 2-6 PNIs.

	1 PNI (N=65)	2-6 PNIs (N=58)	P
Age [mean / median (IQR), year]	63.3 / 63 (9.5)	62.7 / 63 (10.25)	.59
PSA [mean / median (IQR), ng/mL]	8.2 / 6.4 (4.2)	11.7 / 8.0 (4.6)	.09
Biopsy Grade Group			NA
1	NA	NA	
2	NA	NA	
3	65 (100%)	58 (100%)	
4	NA	NA	
5	NA	NA	
Prostatectomy Grade Group			.30
1	0 (0%)	0 (0%)	
2	26 (40.0%)	19 (32.8%)	
3	32 (49.2%)	27 (46.6%)	
4	3 (4.6%)	4 (6.9%)	
5	4 (6.2%)	8 (13.8%)	
pT			.02
2 / 2+	16 (24.6%)	7 (12.1%)	
3a	40 (61.5%)	32 (55.2%)	
3b	9 (13.8%)	19 (32.8%)	
pN			.79
0	56 (86.2%)	49 (84.5%)	
1	9 (13.8%)	9 (15.5%)	
X	0 (0%)	0 (0%)	
Surgical margin			.008
Negative	59 (90.8%)	42 (72.4%)	
Positive	6 (9.2%)	16 (27.6%)	
Tumor volume [mean / median (IQR), cm ³]	8.9 / 6.2 (6.9)	13.4 / 10.5 (10.3)	<.001

PSA, prostate-specific antigen; PNI, perineural invasion; NA, not applicable

Supplemental Table 11. Clinicopathologic findings in cases with Grade Group 1-3 cancer at 2-6 sextant biopsy sites showing 1 vs. 2-6 PNIs.

	1 PNI (N=232)	2-6 PNIs (N=148)	P
Age [mean / median (IQR), year]	61.8 / 62 (9)	62.4 / 63 (9.75)	.37
PSA [mean / median (IQR), ng/mL]	6.8 / 5.4 (3.0)	9.1 / 6.1 (3.9)	.09
Biopsy Grade Group			.007
1	44 (19.0%)	16 (10.8%)	
2	123 (53.0%)	74 (50.0%)	
3	65 (28.0%)	58 (39.2%)	
4	NA	NA	
5	NA	NA	
Prostatectomy Grade Group			.04
1	15 (6.5%)	4 (2.7%)	
2	151 (65.1%)	88 (59.5%)	
3	59 (25.4%)	44 (29.7%)	
4	3 (1.3%)	4 (2.7%)	
5	4 (1.7%)	8 (5.4%)	
pT			<.001
2 / 2+	111 (47.8%)	41 (27.7%)	
3a	108 (46.6%)	78 (52.7%)	
3b	13 (5.6%)	29 (19.6%)	
pN			.06
0	210 (90.5%)	126 (85.1%)	
1	14 (6.0%)	17 (11.5%)	
X	8 (3.4%)	5 (3.4%)	
Surgical margin			.04
Negative	206 (88.8%)	120 (81.1%)	
Positive	26 (11.2%)	28 (18.9%)	
Tumor volume [mean / median (IQR), cm ³]	7.7 / 5.8 (5.8)	10.8 / 8.8 (8.2)	<.001

PSA, prostate-specific antigen; PNI, perineural invasion; NA, not applicable

Supplemental Table 12. Clinicopathologic findings in cases with Grade Group 4 cancer at 2-6 sextant biopsy sites showing 1 vs. 2-6 PNIs.

	1 PNI (N=40)	2-6 PNIs (N=32)	P
Age [mean / median (IQR), year]	64.8 / 65 (8.75)	64.2 / 65 (10)	.70
PSA [mean / median (IQR), ng/mL]	12.5 / 8.1 (7.4)	10.6 / 6.9 (6.9)	.50
Biopsy Grade Group			NA
1	NA	NA	
2	NA	NA	
3	NA	NA	
4	40 (100%)	32 (100%)	
5	NA	NA	
Prostatectomy Grade Group			.11
1	0 (0%)	0 (0%)	
2	1 (2.5%)	5 (15.6%)	
3	21 (52.5%)	12 (37.5%)	
4	7 (17.5%)	4 (12.5%)	
5	11 (27.5%)	11 (34.4%)	
pT			.28
2 / 2+	9 (22.5%)	4 (12.5%)	
3a	16 (40.0%)	19 (59.4%)	
3b	15 (37.5%)	9 (28.1%)	
pN			.11
0	29 (72.5%)	18 (56.3%)	
1	10 (25.0%)	14 (43.8%)	
X	1 (2.5%)	0 (0%)	
Surgical margin			.26
Negative	25 (62.5%)	24 (75.0%)	
Positive	15 (37.5%)	8 (25.0%)	
Tumor volume [mean / median (IQR), cm ³]	18.8 / 13.4 (21.7)	15.4 / 11.8 (11.8)	.73

PSA, prostate-specific antigen; PNI, perineural invasion; NA, not applicable

Supplemental Table 13. Clinicopathologic findings in cases with Grade Group 5 cancer at 2-6 sextant biopsy sites showing 1 vs. 2-6 PNIs.

	1 PNI (N=18)	2-6 PNIs (N=27)	P
Age [mean / median (IQR), year]	62.0 / 63.5 (18.25)	63.2 / 64 (8)	.60
PSA [mean / median (IQR), ng/mL]	10.1 / 6.5 (6.8)	15.6 / 8.8 (6.5)	.40
Biopsy Grade Group			NA
1	NA	NA	
2	NA	NA	
3	NA	NA	
4	NA	NA	
5	18 (100%)	27 (100%)	
Prostatectomy Grade Group			.51
1	0 (0%)	0 (0%)	
2	0 (0%)	2 (7.4%)	
3	5 (27.8%)	9 (33.3%)	
4	0 (0%)	0 (0%)	
5	13 (72.2%)	16 (59.3%)	
pT			>.99
2 / 2+	0 (0%)	1 (3.7%)	
3a	8 (44.4%)	11 (40.7%)	
3b	10 (55.6%)	15 (55.6%)	
pN			.39
0	11 (61.1%)	13 (48.1%)	
1	7 (38.9%)	14 (51.9%)	
X	0 (0%)	0 (0%)	
Surgical margin			.04
Negative	13 (72.2%)	11 (40.7%)	
Positive	5 (27.8%)	16 (59.3%)	
Tumor volume [mean / median (IQR), cm ³]	16.2 / 15.3 (16.0)	25.8 / 18.0 (25.1)	.12

PSA, prostate-specific antigen; PNI, perineural invasion; NA, not applicable

Supplemental Table 14. Clinicopathologic findings in cases with Grade Group 4-5 cancer at 2-6 sextant biopsy sites showing 1 vs. 2-6 PNIs.

	1 PNI (N=58)	2-6 PNIs (N=59)	P
Age [mean / median (IQR), year]	63.9 / 64 (9.25)	63.8 / 65 (10)	.91
PSA [mean / median (IQR), ng/mL]	11.7 / 8.0 (6.9)	13.0 / 7.4 (6.7)	.99
Biopsy Grade Group			.10
1	NA	NA	
2	NA	NA	
3	NA	NA	
4	40 (69.0%)	32 (54.2%)	
5	18 (31.0%)	27 (45.8%)	
Prostatectomy Grade Group			.09
1	0 (0%)	0 (0%)	
2	1 (1.7%)	7 (11.9%)	
3	26 (44.8%)	21 (35.6%)	
4	7 (12.1%)	4 (6.8%)	
5	24 (41.4%)	27 (45.8%)	
pT			.40
2 / 2+	9 (15.5%)	5 (8.5%)	
3a	24 (41.4%)	30 (50.8%)	
3b	25 (43.1%)	24 (40.7%)	
pN			.05
0	40 (69.0%)	31 (52.5%)	
1	17 (29.3%)	28 (47.5%)	
X	1 (1.7%)	0 (0%)	
Surgical margin			.49
Negative	38 (65.5%)	35 (59.3%)	
Positive	20 (34.5%)	24 (40.7%)	
Tumor volume [mean / median (IQR), cm ³]	18.0 / 13.9 (15.9)	20.1 / 14.1 (16.8)	.35

PSA, prostate-specific antigen; PNI, perineural invasion; NA, not applicable