

Supplemental Digital Content. The Supplemental Digital Content was not copyedited by Archives of Pathology & Laboratory Medicine.

Figure 1: Case A, Heart: Confluent contraction band necrosis/coagulative myocytolysis, with a predominantly neutrophilic inflammatory infiltrate with histiocytes. Hematoxylin and Eosin stain (H&E), 100X

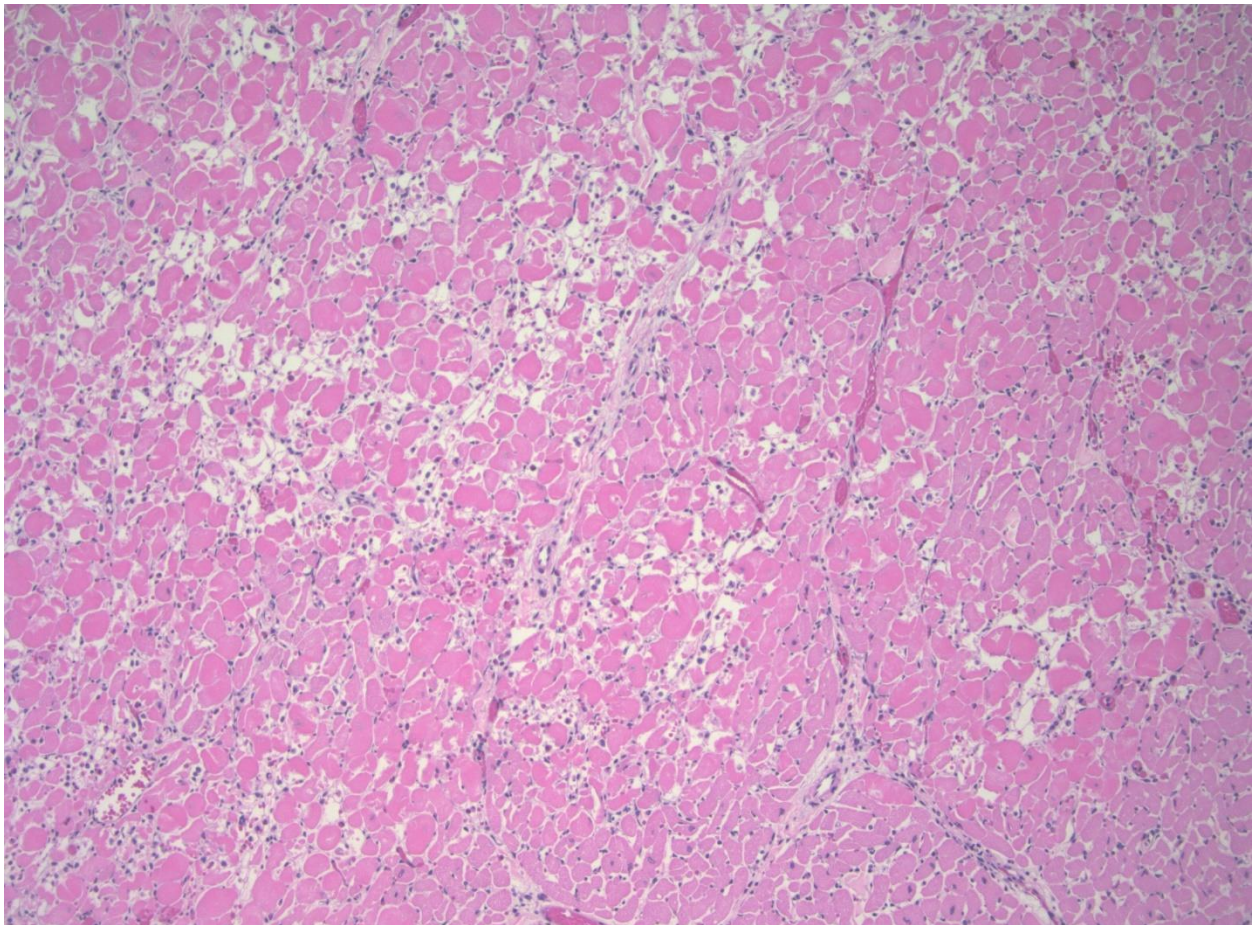


Figure 2: Case A, Heart. Interstitial inflammation adjacent to fibrosis. H&E 200X

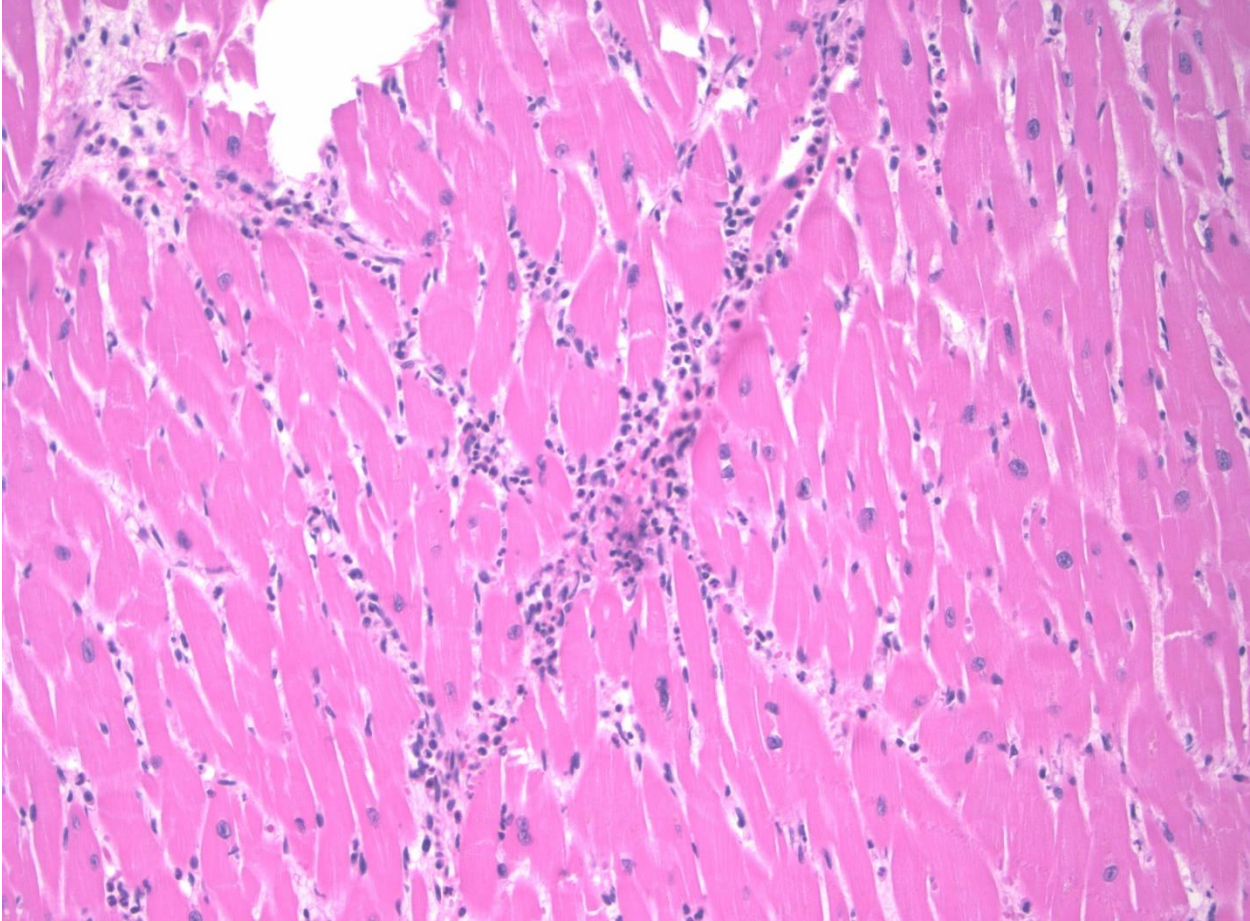
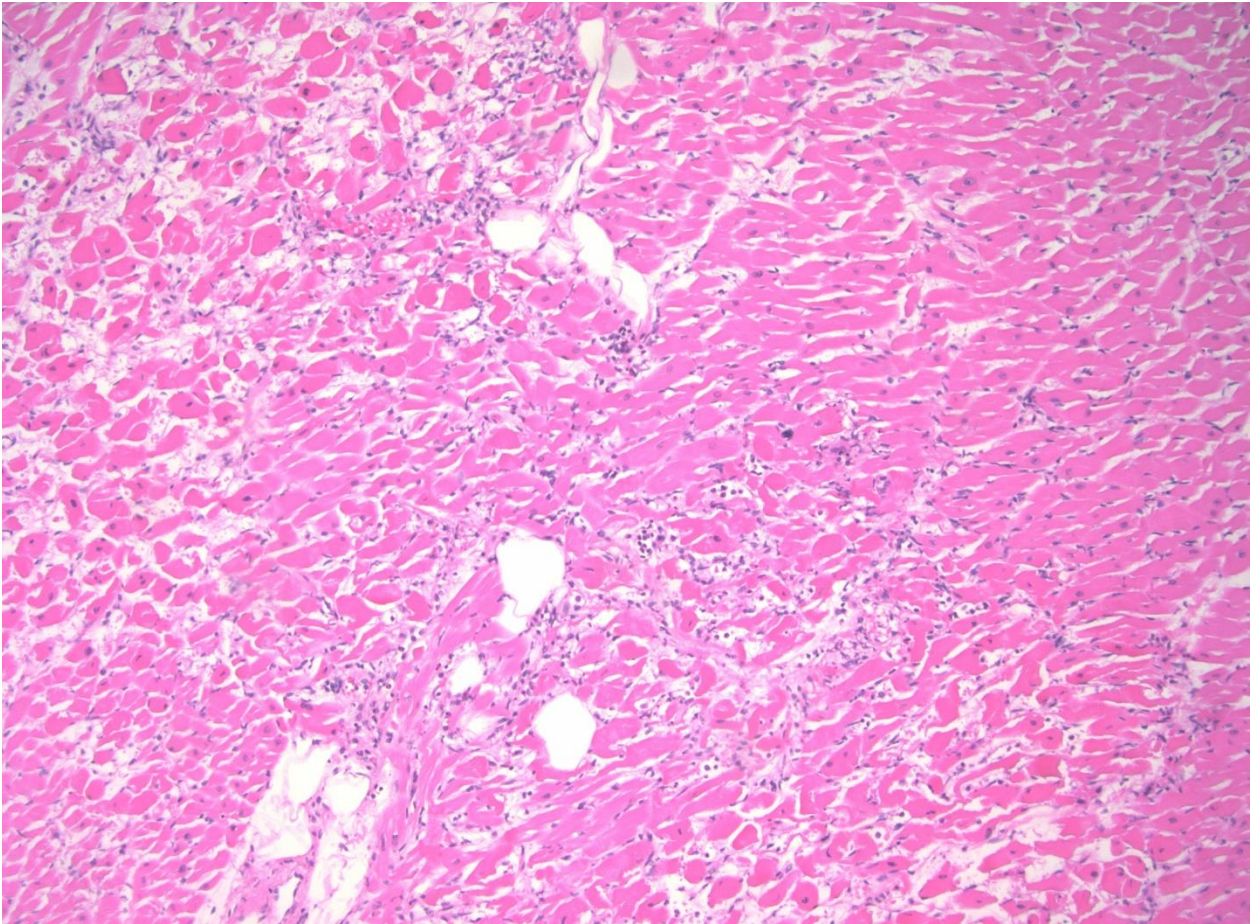


Figure 3: Case B, Heart. Confluent areas of ischemia with coagulative myocytolysis and contraction band necrosis. H&E 200X



Figures 4: Case B, Heart. Perivascular inflammation. H&E 200X

