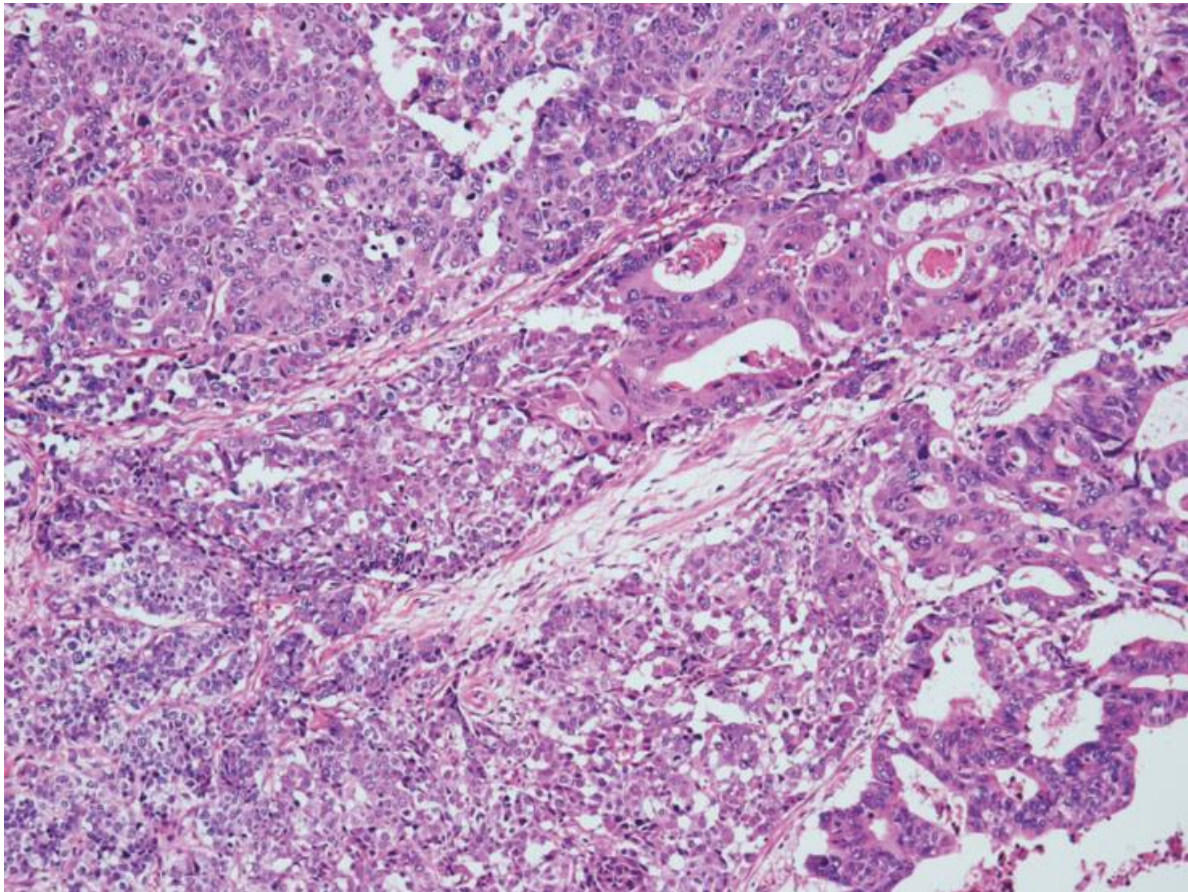


Supplemental Digital Content. The Supplemental Digital Content was not copyedited by Archives of Pathology & Laboratory Medicine.

**Supplemental Figure 1.** A representative image of mixed neuroendocrine-nonendocrine neoplasm (MiNEN) in ampullary carcinoma (AC).



A case of MiNEN in AC with moderately differentiated adenocarcinoma (right) and large cell neuroendocrine carcinoma (left). Hematoxylin and eosin, original magnification x100.