

**Supplemental Digital Content, containing 1 table and 6 figures.**

The Supplemental Digital Content was not copyedited by *Archives of Pathology & Laboratory Medicine*.

**Supplemental Table. ALP percentiles in both sexes according to age.**

Age	Males																	
	n	p2.5	p2.5L	p2.5U	p5	p5L	p5U	p50	p50L	p50U	p95	p95L	p95U	p97.5	p97.5L	p97.5U	Skewness	Kurtosis
≤ 15 days	114	102.4	89.2	115.7	114.0	103.1	125.0	230.0	207.0	277.0	453.0	432.0	473.9	464.1	452.5	475.8	0.5977	-0.1432
>15. ≤ 30 days	38	177.7	134.4	221.0	189.0	150.1	228.0	332.0	269.0	386.0	488.1	470.0	506.2	502.1	472.0	532.2	0.1206	-1.1321
> 30. ≤ 90 days	61	184.5	158.0	211.0	196.6	127.2	266.0	353.0	313.0	399.0	569.1	525.0	588.0	576.4	564.0	588.8	0.1871	-0.8087
> 3. ≤ 6 months	73	161.0	144.0	178.0	176.4	144.0	209.0	290.0	268.0	309.0	449.0	404.0	493.9	465.0	445.0	485.0	0.3649	-0.6941
> 6. ≤ 9 months	87	129.1	112.3	146.0	139.7	65.0	153.0	241.0	219.0	256.0	377.4	365.0	389.8	393.2	376.0	410.4	0.9933	2.6287
> 9. ≤ 12 months	125	118.8	94.0	143.0	132.8	94.0	146.0	241.0	218.0	254.0	379.8	363.0	396.5	427.1	373.0	481.1	0.4357	-0.1791
> 1. ≤ 2 years	486	127.2	118.0	136.0	138.5	131.0	144.0	222.5	218.0	230.0	353.0	336.0	374.0	382.0	361.0	400.0	0.6347	0.3348
> 2. ≤ 3 years	401	130.0	101.0	137.0	141.0	133.0	149.0	220.0	213.0	228.0	309.0	298.0	324.0	327.0	317.0	355.0	0.1975	-0.2946
> 3. ≤ 4 years	446	124.1	110.0	136.0	139.2	132.0	147.0	218.0	213.0	224.0	329.0	312.0	339.0	342.9	333.0	363.0	0.3607	-0.1301
> 4. ≤ 5 years	412	135.2	127.0	141.0	143.2	135.0	151.0	229.0	221.0	235.0	322.5	314.8	338.0	337.5	325.0	349.0	0.1801	-0.6077
> 5. ≤ 6 years	424	128.1	117.0	138.0	144.0	129.0	152.3	236.0	229.0	241.0	334.0	329.0	346.0	346.9	337.0	363.0	0.0658	-0.5495
> 6. ≤ 6 years	439	141.9	130.0	150.0	153.7	142.0	163.5	240.0	235.0	246.0	340.0	332.0	343.0	345.2	340.0	355.0	0.0652	-0.4539
> 7. ≤ 8 years	455	138.3	102.0	143.0	155.7	140.0	162.0	239.0	231.0	245.0	344.6	331.0	367.0	373.7	360.0	392.0	0.1894	-0.0035
> 8. ≤ 9 years	453	135.9	123.0	147.0	153.0	143.0	161.0	239.0	232.0	245.0	348.2	338.0	366.0	371.5	361.0	405.0	0.3307	0.0318
> 9. ≤ 10 years	505	141.6	130.0	147.0	156.4	145.0	168.0	253.0	242.0	259.0	379.6	358.0	405.0	415.7	391.0	436.0	0.5257	0.2642
> 10. ≤ 11 years	507	124.7	108.0	144.0	154.6	128.0	162.0	260.0	252.0	270.0	385.4	374.0	406.0	407.7	391.0	423.0	0.0749	-0.1262
> 11. ≤ 12 years	567	149.1	137.5	159.5	174.6	156.0	181.0	274.7	266.0	281.5	445.0	422.0	468.5	474.4	461.0	500.0	0.5892	0.0366
> 12. ≤ 13 years	609	131.6	121.0	150.5	156.0	141.0	161.0	282.0	274.0	289.5	449.4	439.0	481.0	486.6	462.0	495.0	0.2820	-0.4675
> 13. ≤ 14 years	840	103.9	98.0	111.0	116.9	109.0	125.5	226.0	221.0	234.0	382.5	374.0	396.0	410.1	393.0	435.0	0.4733	-0.2680
> 14. ≤ 15 years	957	82.0	78.0	87.0	90.0	87.0	94.0	162.0	157.0	167.0	316.0	308.0	328.0	353.2	343.0	367.0	0.8151	0.0550
> 15. ≤ 16 years	1116	65.0	63.0	68.0	72.0	70.0	74.0	119.8	116.0	122.0	235.1	221.0	247.0	263.3	251.0	281.0	1.2130	1.4633
> 16. ≤ 17 years	1087	59.0	53.0	60.0	63.3	60.0	65.0	98.0	96.0	100.0	176.7	171.0	186.0	196.0	188.0	205.0	1.0559	1.0443
> 17. ≤ 18 years	1072	51.7	49.0	54.5	57.5	55.0	59.0	88.0	86.0	90.0	138.7	135.0	146.0	150.2	146.0	159.0	0.6735	0.2293
> 18. ≤ 20 years	2327	46.0	44.0	48.0	50.0	49.0	51.0	79.0	78.0	80.5	120.0	118.0	123.0	130.9	127.0	132.0	0.4956	0.0831
> 20. ≤ 30 years	18020	42.0	41.0	42.0	45.0	45.0	46.0	69.0	68.0	69.0	102.0	102.0	103.0	108.0	108.0	109.0	0.4290	-0.0955
> 30. ≤ 40 years	31470	41.0	40.0	41.0	44.0	44.0	45.0	68.0	67.0	68.0	103.0	102.3	104.0	110.0	110.0	111.0	0.5213	0.0281
> 40. ≤ 50 years	41787	41.0	40.0	41.0	44.0	44.0	45.0	69.0	68.0	69.0	108.0	107.0	108.0	116.0	116.0	117.0	0.6409	0.2831
> 50. ≤ 60 years	50124	40.5	40.0	41.0	44.0	44.0	45.0	69.5	69.0	70.0	112.0	111.0	112.0	123.0	122.0	123.0	0.7879	0.6815
> 60. ≤ 70 years	49370	39.6	39.0	40.0	43.0	43.0	44.0	69.0	69.0	69.0	113.0	112.6	114.0	124.0	123.0	125.0	0.8269	0.8223
> 70. ≤ 80 years	39480	39.4	39.0	40.0	44.0	44.0	44.0	71.0	71.0	71.0	120.7	120.0	121.3	134.0	133.0	135.0	0.9957	1.4036
> 80. ≤ 90 years	21364	42.0	41.0	42.0	46.0	46.0	46.5	75.7	75.0	76.0	135.0	133.0	137.0	154.3	152.0	156.5	1.2753	2.3761
> 90. ≤ 100 years	3982	43.0	42.0	45.0	48.0	47.0	49.0	80.0	79.0	81.0	159.2	154.0	165.0	188.0	183.0	198.0	1.7188	3.9368

Age	Females																	
	n	p2.5	p2.5L	p2.5U	p5	p5L	p5U	p50	p50L	p50U	p95	p95L	p95U	p97.5	p97.5L	p97.5U	Skewness	Kurtosis
≤ 15 days	50	64.1	50.1	78.0	78.0	45.0	111.0	212.0	185.0	245.0	363.0	330.0	395.9	430.9	356.0	505.9	0,3735	-0,0941
>15. ≤ 30 days	45	198.1	187.2	209.0	201.0	172.0	230.0	328.5	293.0	363.0	533.8	493.0	574.6	542.8	507.0	578.5	0,5407	-0,3020
> 30. ≤ 90 days	47	135.2	107.4	163.0	158.8	115.6	202.0	317.0	272.0	341.0	516.8	448.0	585.6	552.0	482.0	622.0	0,2660	-0,4658
> 3. ≤ 6 months	73	146.2	134.4	158.0	157.2	95.0	178.0	275.0	249.0	285.0	375.6	357.0	415.0	383.0	372.0	394.0	-0,1263	-0,6093
> 6. ≤ 9 months	74	131.6	119.2	144.0	140.4	109.5	169.0	251.0	223.0	263.0	399.8	373.0	426.6	434.0	393.0	475.0	0,7440	0,1519
> 9. ≤ 12 months	129	133.8	116.6	151.0	140.7	130.0	163.0	226.0	214.0	235.0	405.8	354.0	438.0	427.9	401.0	454.7	0,9613	0,7075
> 1. ≤ 2 years	350	123.6	100.0	134.0	136.0	125.0	144.0	223.0	214.0	231.0	353.0	342.0	377.0	378.1	355.0	412.0	0,5798	0,3528
> 2. ≤ 3 years	315	129.1	110.5	139.0	139.0	132.0	150.0	228.0	217.0	233.3	333.3	315.0	352.0	356.5	333.0	400.0	0,3960	-0,0606
> 3. ≤ 4 years	341	131.0	112.0	145.0	147.0	130.0	154.0	224.0	218.0	235.0	327.0	315.0	366.0	361.0	329.0	380.0	0,3248	0,0900
> 4. ≤ 5 years	377	129.0	117.0	142.0	143.0	134.0	150.0	230.0	222.0	242.0	337.6	328.0	360.0	364.2	341.0	391.0	0,1653	-0,0908
> 5. ≤ 6 years	399	131.9	113.0	145.0	148.0	132.0	159.5	239.0	232.0	245.0	338.3	329.0	353.0	355.2	346.0	376.0	0,0972	-0,3269
> 6. ≤ 6 years	463	136.6	116.0	144.0	153.0	137.0	155.0	247.0	238.0	252.0	373.9	352.0	395.0	396.4	382.0	423.0	0,3644	0,0086
> 7. ≤ 8 years	504	147.0	129.0	154.0	159.0	152.0	165.0	249.5	241.0	256.0	372.9	362.0	382.5	387.9	379.0	392.0	0,2084	-0,5402
> 8. ≤ 9 years	503	134.0	119.0	141.0	145.3	136.0	158.5	253.0	246.0	263.0	383.9	374.0	414.0	443.0	401.0	475.0	0,5187	0,6657
> 9. ≤ 10 years	525	149.2	126.0	157.0	161.8	153.0	174.0	268.0	262.0	275.0	404.0	392.0	425.0	429.9	418.0	441.0	0,3623	0,0039
> 10. ≤ 11 years	517	130.7	108.0	142.0	147.4	142.0	162.0	254.0	247.0	264.0	380.1	370.0	400.0	422.2	397.0	441.0	0,2407	-0,2343
> 11. ≤ 12 years	600	89.0	82.0	94.0	102.0	91.7	109.0	192.0	185.0	201.0	326.1	315.0	339.0	349.1	337.0	369.0	0,4570	-0,3225
> 12. ≤ 13 years	623	68.7	60.0	71.0	77.0	71.0	81.0	133.0	129.0	138.0	271.9	256.0	281.0	283.5	280.0	294.0	0,9533	0,3769
> 13. ≤ 14 years	997	58.0	54.0	61.0	64.0	61.0	66.0	99.0	97.0	101.0	171.0	164.0	174.0	181.0	173.5	186.0	0,9550	1,0556
> 14. ≤ 15 years	1142	51.0	47.0	53.0	56.0	54.0	57.0	84.0	82.0	85.7	130.0	128.0	135.0	140.0	136.0	145.0	0,6005	0,1270
> 15. ≤ 16 years	1291	44.3	42.0	46.0	48.0	47.0	49.0	74.0	73.0	76.0	111.0	109.0	113.0	117.0	114.0	119.0	0,3829	-0,3126
> 16. ≤ 17 years	1399	41.0	40.0	42.0	44.0	43.0	46.0	69.0	67.0	70.0	101.0	98.0	104.0	107.0	105.0	109.5	0,3755	-0,2214
> 17. ≤ 18 years	1634	39.0	37.0	41.0	43.0	42.0	44.0	65.0	64.0	65.0	96.0	94.0	97.0	102.0	98.0	103.0	0,3942	-0,0227
> 18. ≤ 20 years	3830	36.0	35.0	37.0	40.0	39.0	41.0	62.0	61.0	63.0	93.0	92.0	94.5	99.0	97.5	100.0	0,4357	-0,0112
> 20. ≤ 30 years	29489	34.0	34.0	34.0	37.0	37.0	37.0	57.0	57.0	57.0	90.0	90.0	91.0	99.0	98.0	99.0	0,6931	0,3938
> 30. ≤ 40 years	44516	34.0	34.0	34.0	37.0	37.0	37.0	59.0	59.0	59.0	101.0	100.0	101.0	112.0	111.0	112.0	0,9357	0,8538
> 40. ≤ 50 years	55358	35.5	35.0	36.0	39.0	39.0	39.0	62.0	62.0	62.0	104.0	103.3	104.5	113.0	113.0	114.0	0,7554	0,3393
> 50. ≤ 60 years	64756	43.0	43.0	44.0	48.0	48.0	48.0	77.0	76.0	77.0	121.0	121.0	122.0	131.0	130.0	131.0	0,5869	0,1566
> 60. ≤ 70 years	62364	44.0	43.3	44.0	48.0	48.0	48.8	76.0	76.0	76.0	120.0	119.0	120.0	129.6	129.0	130.0	0,6103	0,2697
> 70. ≤ 80 years	51650	42.0	41.5	42.0	46.0	46.0	47.0	74.0	74.0	75.0	119.0	118.0	119.0	129.0	128.0	130.0	0,6587	0,3631
> 80. ≤ 90 years	39993	41.0	40.5	41.0	45.0	45.0	46.0	75.0	75.0	75.0	126.0	125.0	127.0	138.5	137.6	139.3	0,8027	0,6720
> 90. ≤ 100 years	11123	42.0	41.0	43.0	47.0	46.0	47.3	78.0	77.0	78.0	135.3	134.0	137.1	150.0	148.0	152.0	0,9561	1,0663

Abbreviations: n, number; ALP, phosphatase alkaline; p, percentile; U, upper; L, lower.

## LEGENDS

**Supplemental Figure 1.** Alkaline phosphatase percentiles charts for men less than 90 days, showing the 2.5<sup>th</sup>, 5<sup>th</sup>, 50<sup>th</sup>, 95<sup>th</sup> and 97.5<sup>th</sup> percentiles, with 95% confidence intervals. The x-axis corresponds to age in days of life, and the y-axis the ALP activity expressed in U/L.

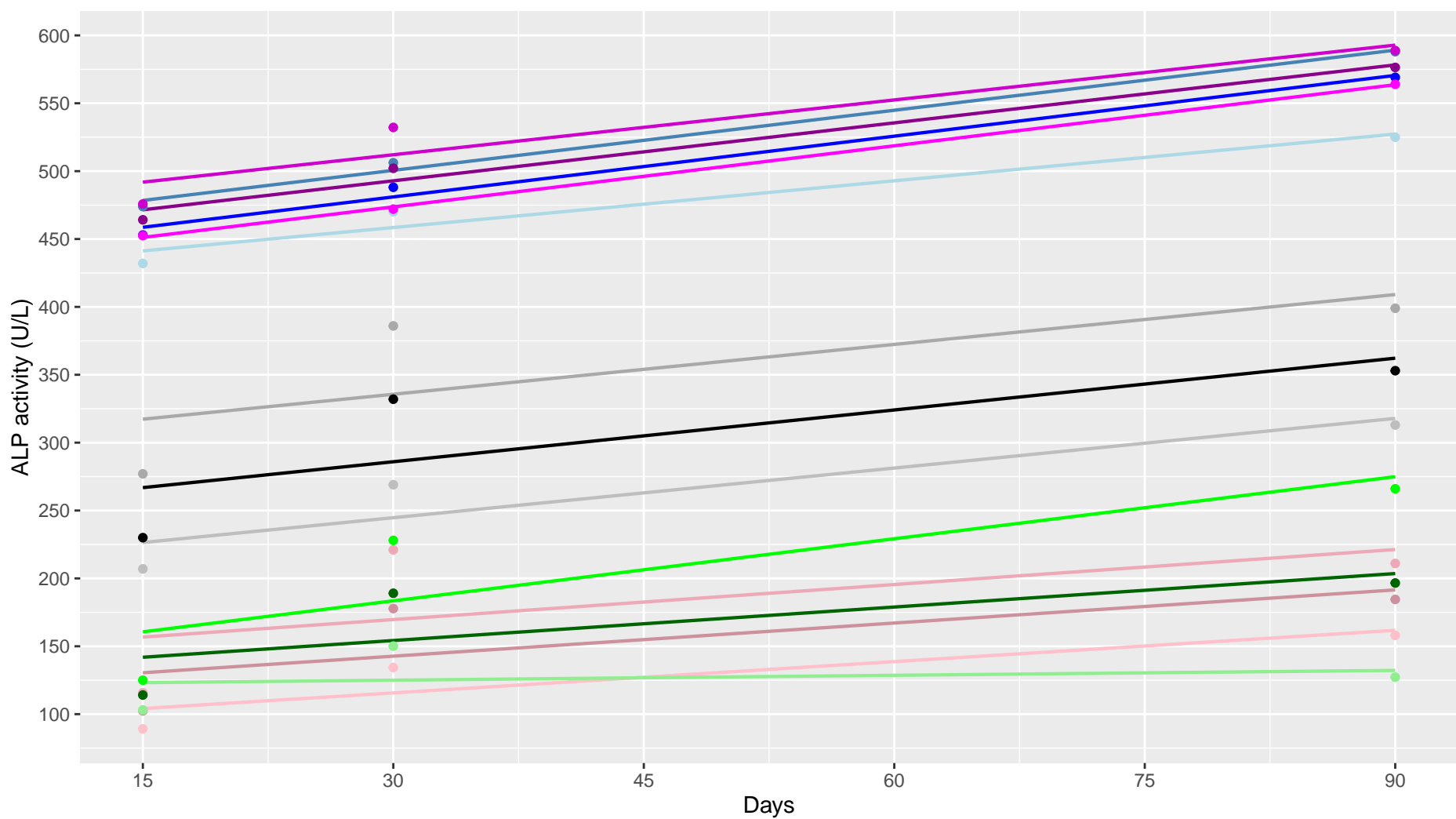
**Supplemental Figure 2.** Alkaline phosphatase percentiles for women less than 90 days, showing the 2.5<sup>th</sup>, 5<sup>th</sup>, 50<sup>th</sup>, 95<sup>th</sup> and 97.5<sup>th</sup> percentiles, with 95% confidence intervals. The x-axis corresponds to age in days of life, and the y-axis the ALP activity expressed in U/L.

**Supplemental Figure 3.** Alkaline phosphatase percentiles for men less than one year old, showing the 2.5<sup>th</sup>, 5<sup>th</sup>, 50<sup>th</sup>, 95<sup>th</sup> and 97.5<sup>th</sup> percentiles, with 95% confidence intervals. The x-axis corresponds to age in months, and the y-axis the ALP activity expressed in U/L.

**Supplemental Figure 4.** Alkaline phosphatase percentiles for men less than one year old, showing the 2.5<sup>th</sup>, 5<sup>th</sup>, 50<sup>th</sup>, 95<sup>th</sup> and 97.5<sup>th</sup> percentiles, with 95% confidence intervals. The x-axis corresponds to age in months, and the y-axis the ALP activity expressed in U/L.

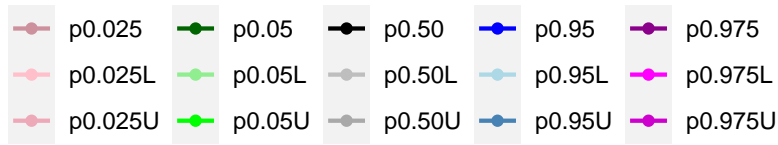
**Supplemental Figure 5.** Alkaline phosphatase percentiles for men over 18 years old, showing the 2.5<sup>th</sup>, 5<sup>th</sup>, 50<sup>th</sup>, 95<sup>th</sup> and 97.5<sup>th</sup> percentiles, with 95% confidence intervals. The x-axis corresponds to age in years, and the y-axis the ALP activity expressed in U/L.

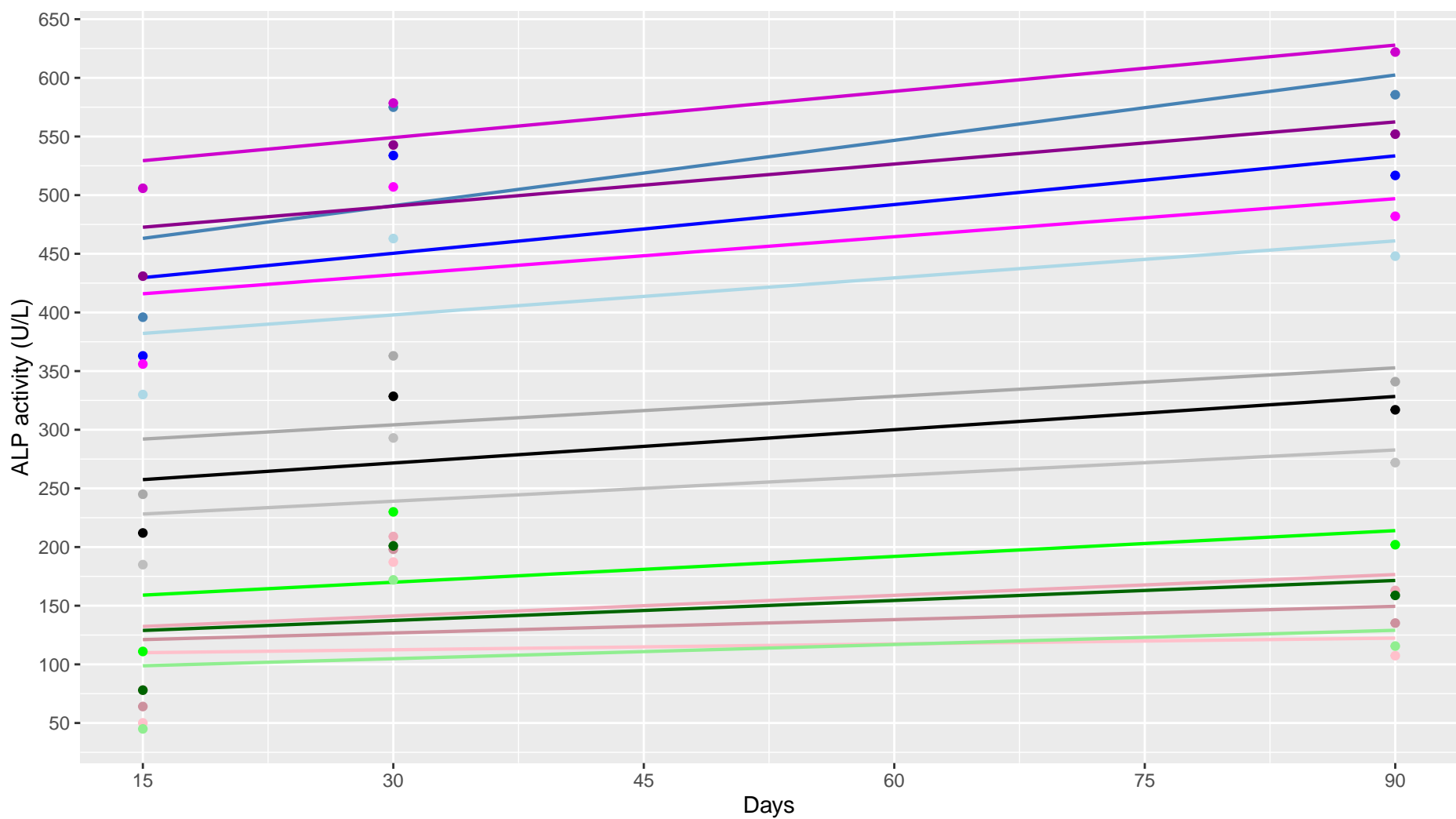
**Supplemental Figure 6.** Alkaline phosphatase percentiles for women over 18 years old, showing the 2.5<sup>th</sup>, 5<sup>th</sup>, 50<sup>th</sup>, 95<sup>th</sup> and 97.5<sup>th</sup> percentiles, with 95% confidence intervals. The x-axis corresponds to age in years, and the y-axis the ALP activity expressed in U/L.



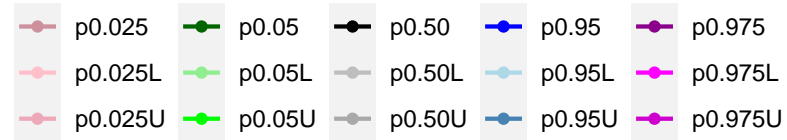
1

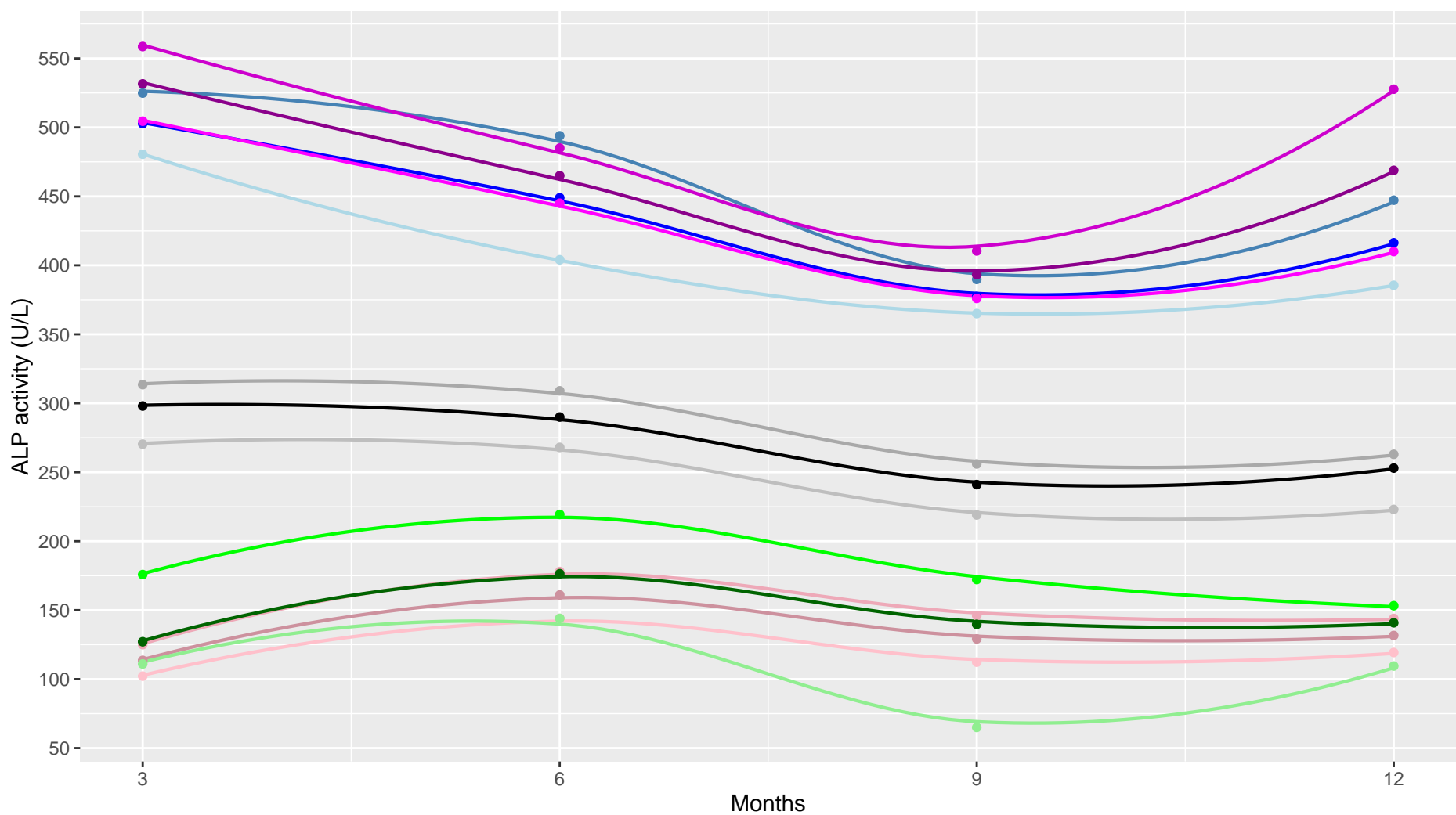
Percentiles



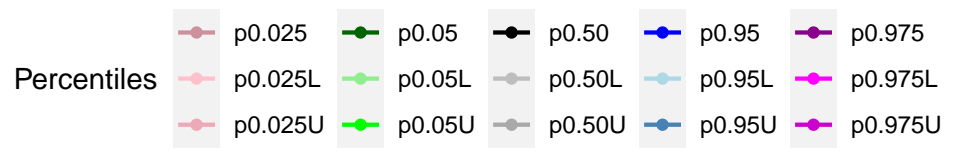


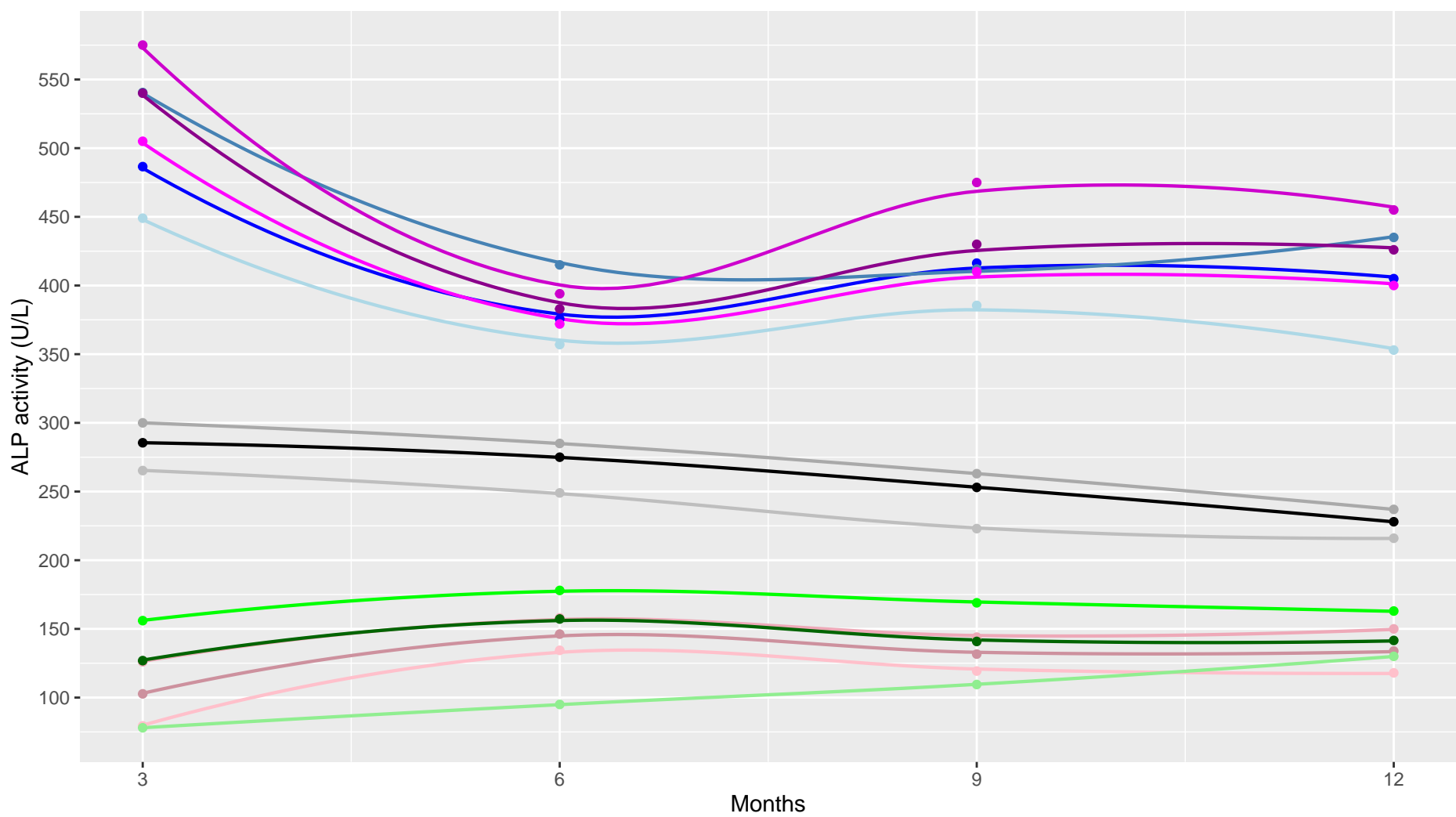
Percentiles





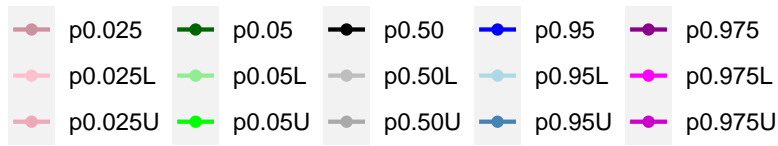
3

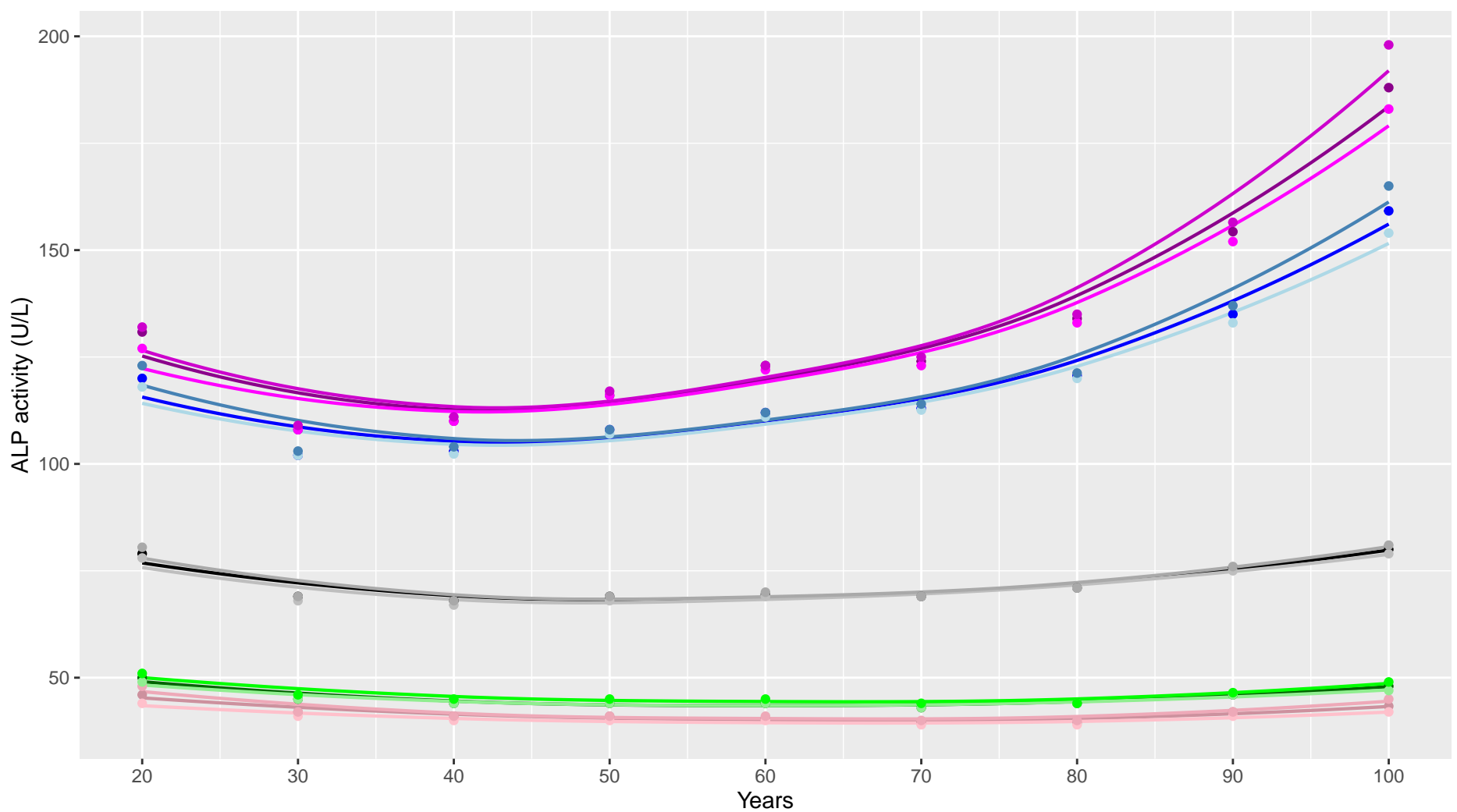




4

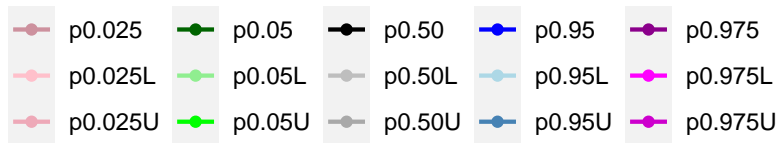
Percentiles



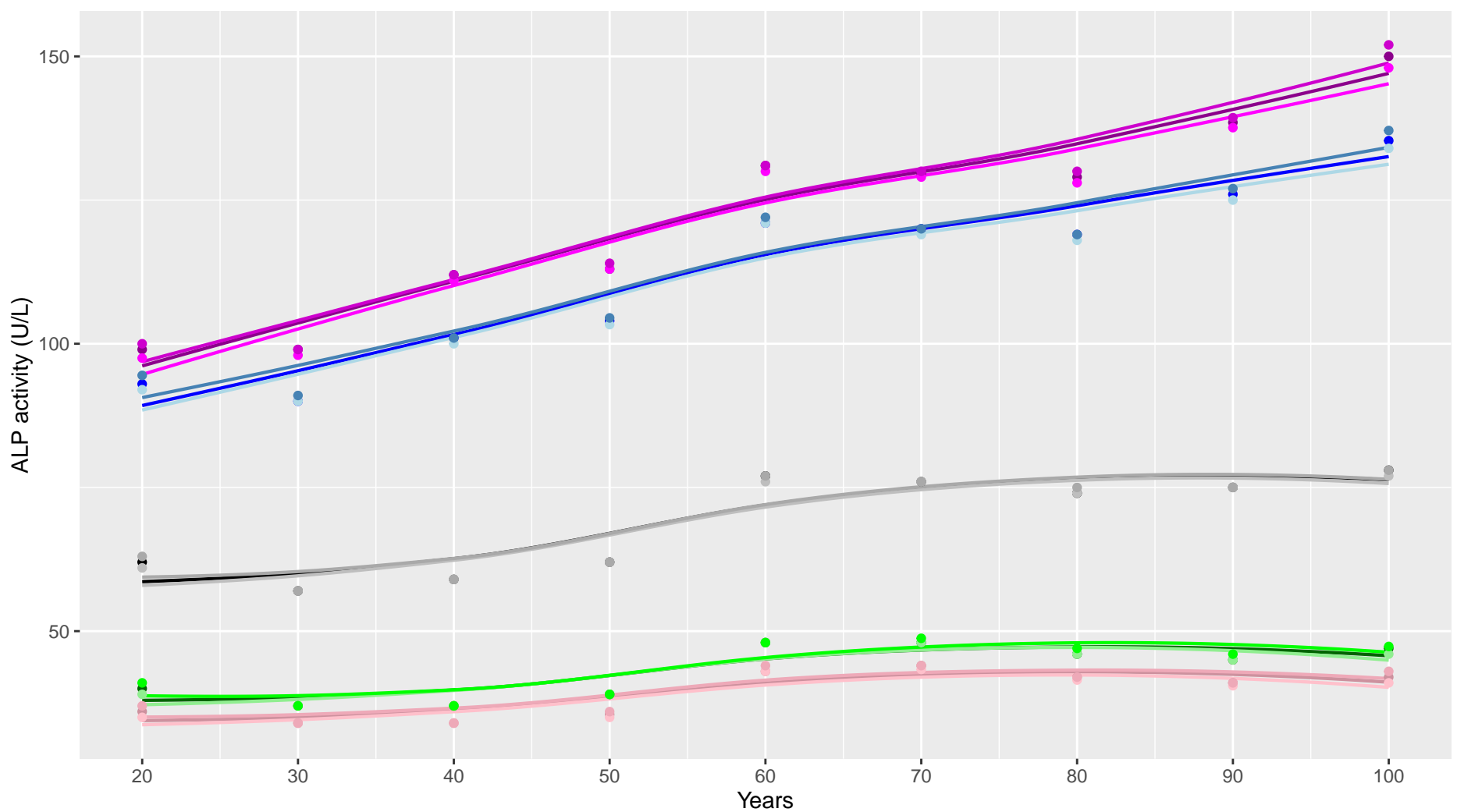


5

Percentiles







6

