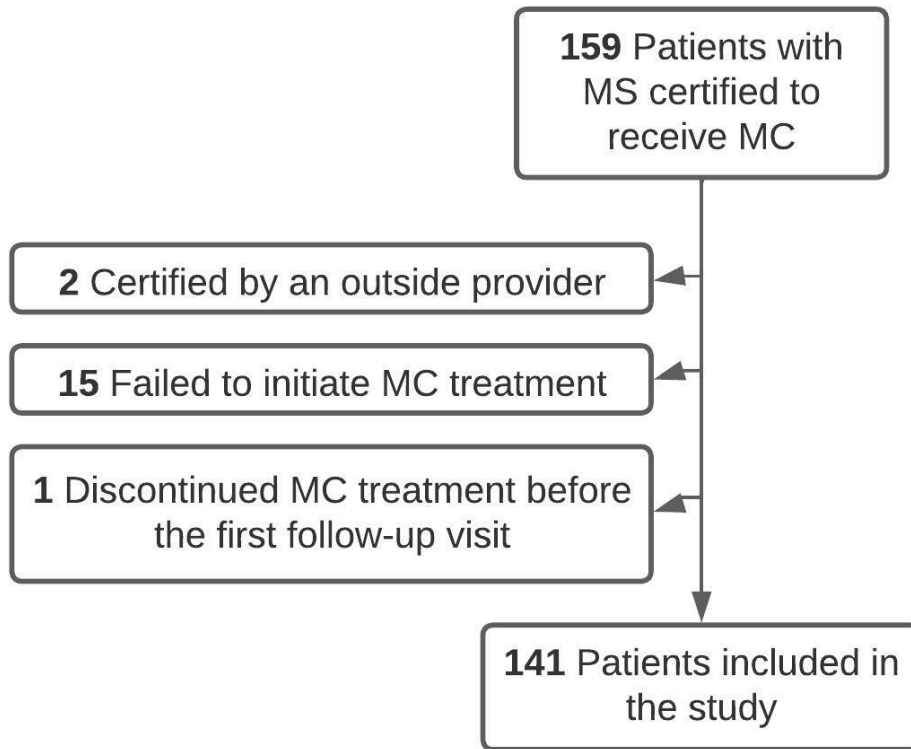
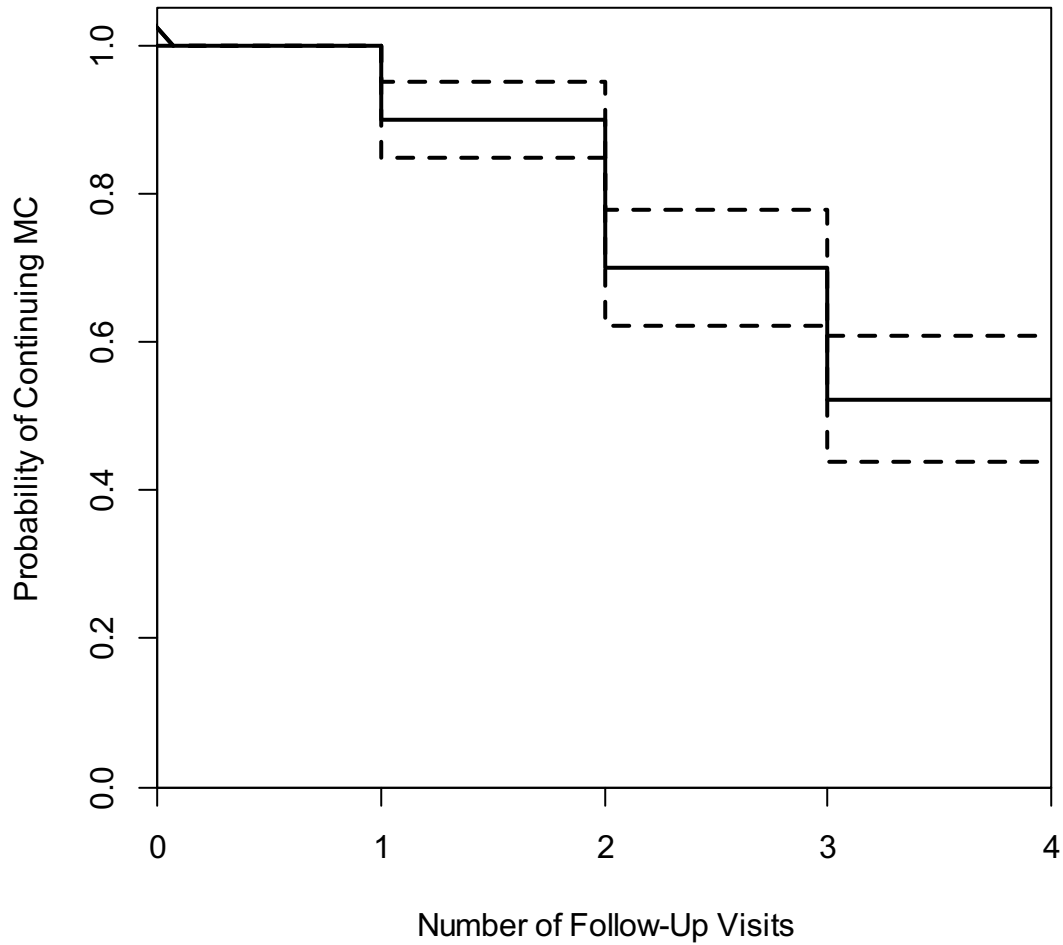


Figure S1. Process of Reviewing Patient Records for Study Inclusion



MC, medical cannabis; MS, multiple sclerosis.

Figure S2. Rate of MC Treatment Discontinuation Across the First 4 Follow-up Visits



MC, medical cannabis.

Patients ($n = 11$) who were in treatment but had not yet completed 4 follow-up visits at the end of data collection (October 31, 2018) were removed from analysis. Dashed lines represent 95% CIs. Before the fourth follow-up visit, 48% of patients ($n = 62$) discontinued MC treatment.

Table S1. Results of Self-Rating Scales^a

<u>Score</u>	<u>n (%)</u>
Zung Anxiety Scale	46
20 – 44 (normal)	38 (83)
45 – 59 (mild to moderate)	8 (17)
60 – 74 (marked to severe)	0 (0)
≥ 75 (extreme)	0 (0)
Beck Depression Inventory	48
1 – 10 (normal)	21 (44)
11 – 16 (mild mood disturbance)	9 (19)
17 – 20 (borderline clinical depression)	8 (17)
21 – 30 (moderate depression)	6 (13)
31 – 40 (severe depression)	1 (2)
> 40 (extreme depression)	3 (6)

^aProper psychiatric care was offered to all patients who indicated symptoms of anxiety and/or depression.