

Lassner JW, Ahn J, Martin S, McQueen A, Kukulski P. Quantifying for-profit outcomes in GME: a multispecialty analysis of board certifying examination pass rates in for-profit affiliated residency programs. *J Grad Med Educ.* 2022;14(4):431-438.
 DOI:<http://dx.doi.org/10.4300/JGME-D-21-01097.1>

Supplementary Data

TABLE
 Results of Bivariate and Multiple Linear Regressions

Specialty	Program Characteristic	Bivariate Regression Results		Multiple Regression Results	
		Unstandardized Coefficient (Standard error)	P Value	Unstandardized Coefficient (Standard error)	P Value
General Surgery Certifying Exam	For-profit affiliated	4.25 (3.97)	0.285	6.06 (4.01)	0.132
	Accreditation year \geq 2011	-5.46 (5.00)	0.277	0.871 (5.41)	0.872
	Number of examinees	0.358 (0.154)	0.021*	0.339 (0.176)	0.055
	University-based	1.48 (1.79)	0.409	1.94 (2.13)	0.363
	Community-based; University affiliated	-4.74 (1.85)	0.011*		REF
	Military-based	5.53 (4.73)	0.243	7.57 (4.77)	0.114
	Community-based	5.05 (2.74)	0.067	6.49 (2.93)	0.028*
	Northeast Region	-3.83 (1.91)	0.046*		REF
	Midwest Region	1.77 (2.07)	0.395	3.36 (2.42)	0.167
	South Region	-0.325 (1.85)	0.861	0.841 (5.41)	0.708
	West Region	4.28 (2.43)	0.079	4.84 (2.83)	0.089
General Surgery Qualifying Exam	For-profit affiliated	-3.48 (1.84)	0.060	-2.27 (1.95)	0.245
	Accreditation year \geq 2011	-3.688 (2.33)	0.115	-0.900 (2.61)	0.731
	Number of examinees	0.112 (0.070)	0.112	0.041 (0.083)	0.624
	University-based	0.767 (.837)	0.360	0.484 (1.04)	0.641
	Community-based; University affiliated	-0.419 (0.872)	0.632		REF
	Military-based	1.43 (2.21)	0.518	1.22 (2.31)	0.600
	Community-based	-1.33 (1.29)	0.303	-1.14 (1.42)	0.424

Lassner JW, Ahn J, Martin S, McQueen A, Kukulski P. Quantifying for-profit outcomes in GME: a multispecialty analysis of board certifying examination pass rates in for-profit affiliated residency programs. *J Grad Med Educ.* 2022;14(4):431-438.

DOI:<http://dx.doi.org/10.4300/JGME-D-21-01097.1>

	Northeast Region	-1.21 (0.923)	0.191		REF
	Midwest Region	1.12 (0.995)	0.262	1.77 (1.17)	0.133
	South Region	-1.31 (0.885)	0.139	0.055 (1.09)	0.960
	West Region	2.68 (1.16)	0.022*	3.05 (1.38)	0.027*
Internal Medicine	For-profit affiliated	-7.73 (1.71)	<0.001*	-0.340 (1.36)	0.835
	Accreditation year \geq 2011	-15.2 (1.24)	<0.001*	-12.1 (1.47)	<0.001*
	Number of examinees	0.134 (0.015)	<0.001*	0.064 (0.019)	<0.001*
	University-based	7.887 (1.24)	<0.001*	0.090 (1.50)	0.952
	Community-based; University affiliated	-0.748 (1.17)	0.524		REF
	Military-based	4.50 (4.25)	0.289	0.614 (3.68)	0.868
	Community-based	-10.8 (1.49)	<0.001*	-3.80 (1.48)	0.011*
	Northeast Region	-0.011 (1.27)	0.993		REF
	Midwest Region	-0.283 (1.39)	0.838	1.69 (1.36)	0.214
	South Region	-0.725 (1.29)	0.575	2.91 (1.34)	0.030*
	West Region	1.66 (1.68)	0.323	3.19 (1.59)	0.045*
	Pediatrics	For-profit affiliated	-14.6 (3.98)	<0.001*	-10.04 (3.62)
Accreditation year \geq 2011		-15.6 (3.57)	<0.001*	-8.19 (3.54)	0.022*
Number of examinees		0.168 (0.026)	<0.001*	0.134 (0.028)	<0.001*
University-based		5.31 (1.65)	0.002*	0.312 (1.68)	0.852
Community-based; University affiliated		-4.50 (1.69)	0.009*		REF
Military-based		3.12 (3.90)	0.425	5.98 (3.48)	0.087
Community-based		-13.3 (4.91)	0.007*	-5.97 (4.67)	0.203
Northeast Region		-2.51(1.82)	0.170		REF
Midwest Region		2.01 (2.02)	0.321	2.92 (2.06)	0.158
South Region		-1.91 (1.74)	0.275	0.899 (1.82)	0.622
West Region		5.26 (2.41)	0.030*	4.43 (2.40)	0.067
Combined		For-profit affiliated	-5.45 (1.37)	<0.001*	-6.25 (1.24)
	Accreditation year \geq 2011	-11.87 (1.16)	<0.001*	-9.85 (1.22)	<0.001*
	Number of examinees	0.099 (0.011)	<0.001*	0.093 (0.014)	<0.001*

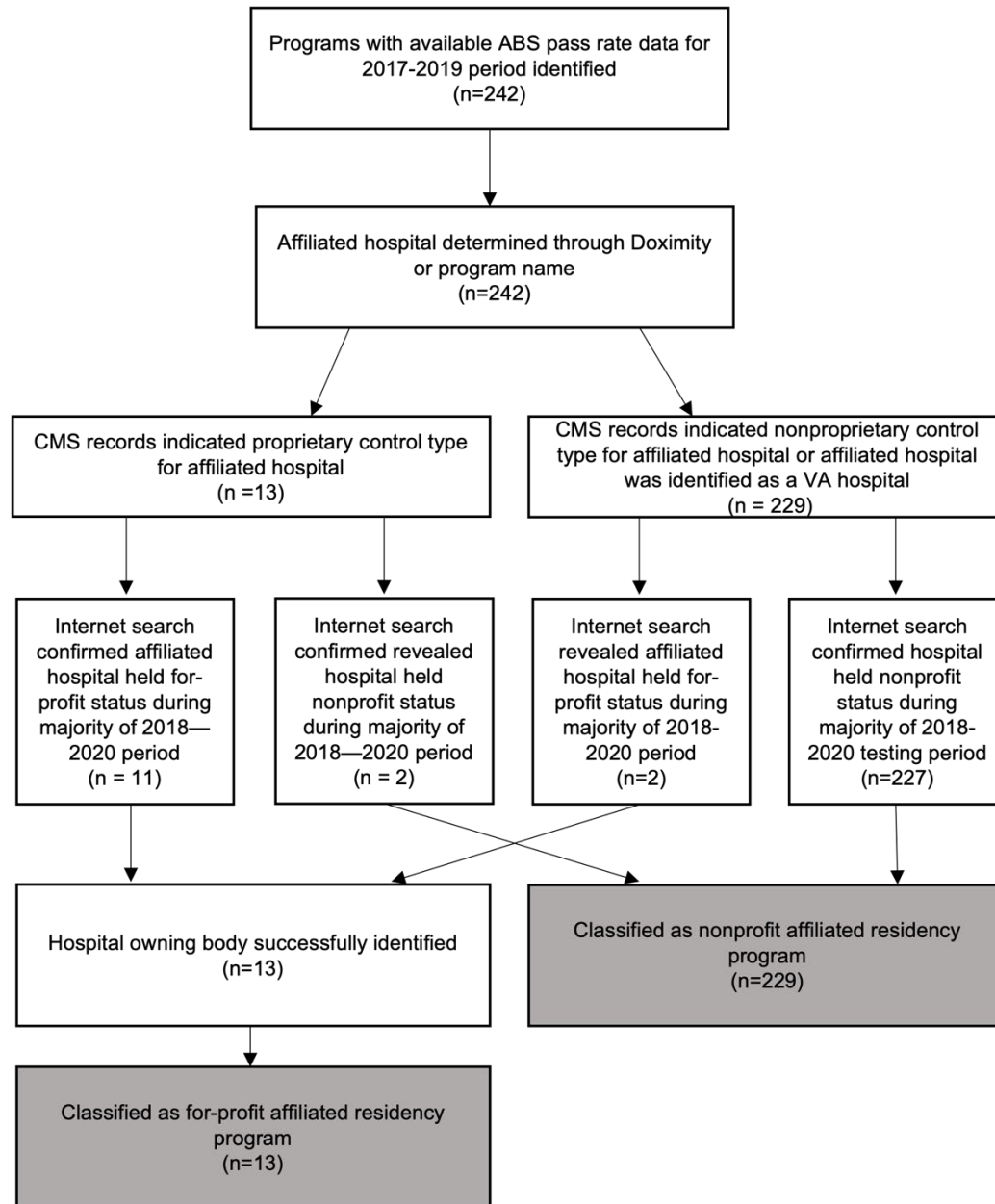
Lassner JW, Ahn J, Martin S, McQueen A, Kukulski P. Quantifying for-profit outcomes in GME: a multispecialty analysis of board certifying examination pass rates in for-profit affiliated residency programs. *J Grad Med Educ.* 2022;14(4):431-438.
DOI:<http://dx.doi.org/10.4300/JGME-D-21-01097.1>

University-based	3.74 (0.764)	<0.001*	0.483 (0.782)	0.537
Community-based; University affiliated	-1.90 (0.763)	0.013*		REF
Military-based	3.17 (2.15)	0.140	3.35 (1.85)	0.070
Community-based	-4.89 (1.14)	<0.001*	-1.08 (1.06)	0.309
Northeast Region	-1.44 (0.819)	0.080		REF
Midwest Region	0.883 (0.892)	0.322	2.30 (0.873)	0.009*
South Region	-1.09 (0.804)	0.117	1.60 (0.820)	0.051
West Region	3.08 (1.06)	0.004*	3.83 (1.02)	<0.001*
GS CE	-9.55 (0.886)	<0.001*	-14.8 (0.967)	<0.001*
GS QE	9.65 (0.885)	<0.001*		REF
IM	1.91 (0.770)	0.013*	-7.79 (1.10)	<0.001*
Pediatrics	-3.29 (0.991)	<0.001*	-13.1 (1.14)	<0.001*

Adjusted R² values: Pediatrics 0.250, IM 0.295, GS QE 0.019, GS CE 0.039, and combined 0.301. Community-based; University affiliated and Northeastern Region levels were excluded from multiple regression analyses as reference variables. GS QE was excluded as a reference variable in the combined multiple regression.

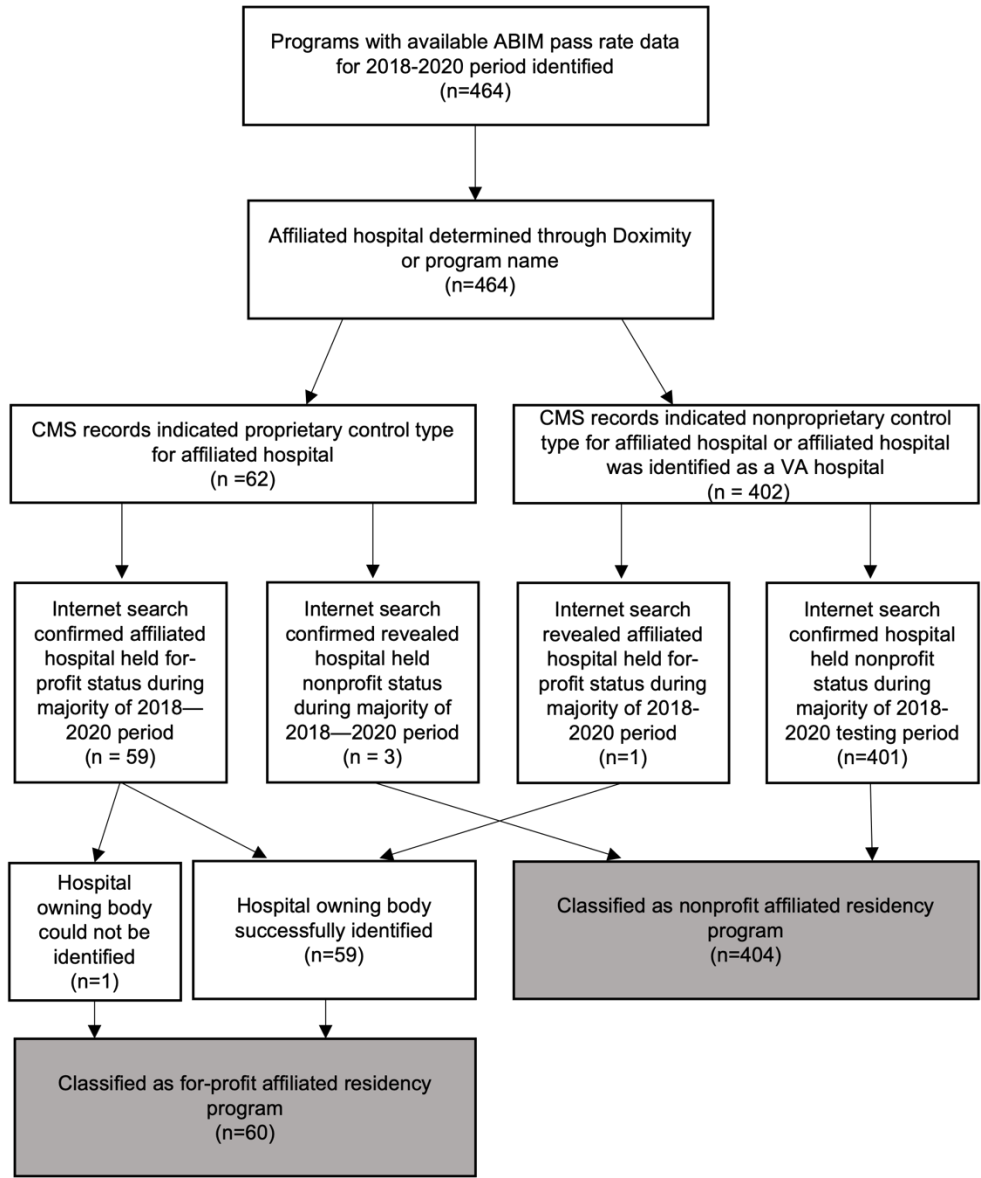
Lassner JW, Ahn J, Martin S, McQueen A, Kukulski P. Quantifying for-profit outcomes in GME: a multispecialty analysis of board certifying examination pass rates in for-profit affiliated residency programs. *J Grad Med Educ.* 2022;14(4):431-438. DOI:<http://dx.doi.org/10.4300/JGME-D-21-01097.1>

FIGURE
General Surgery Profit Status Decision Tree



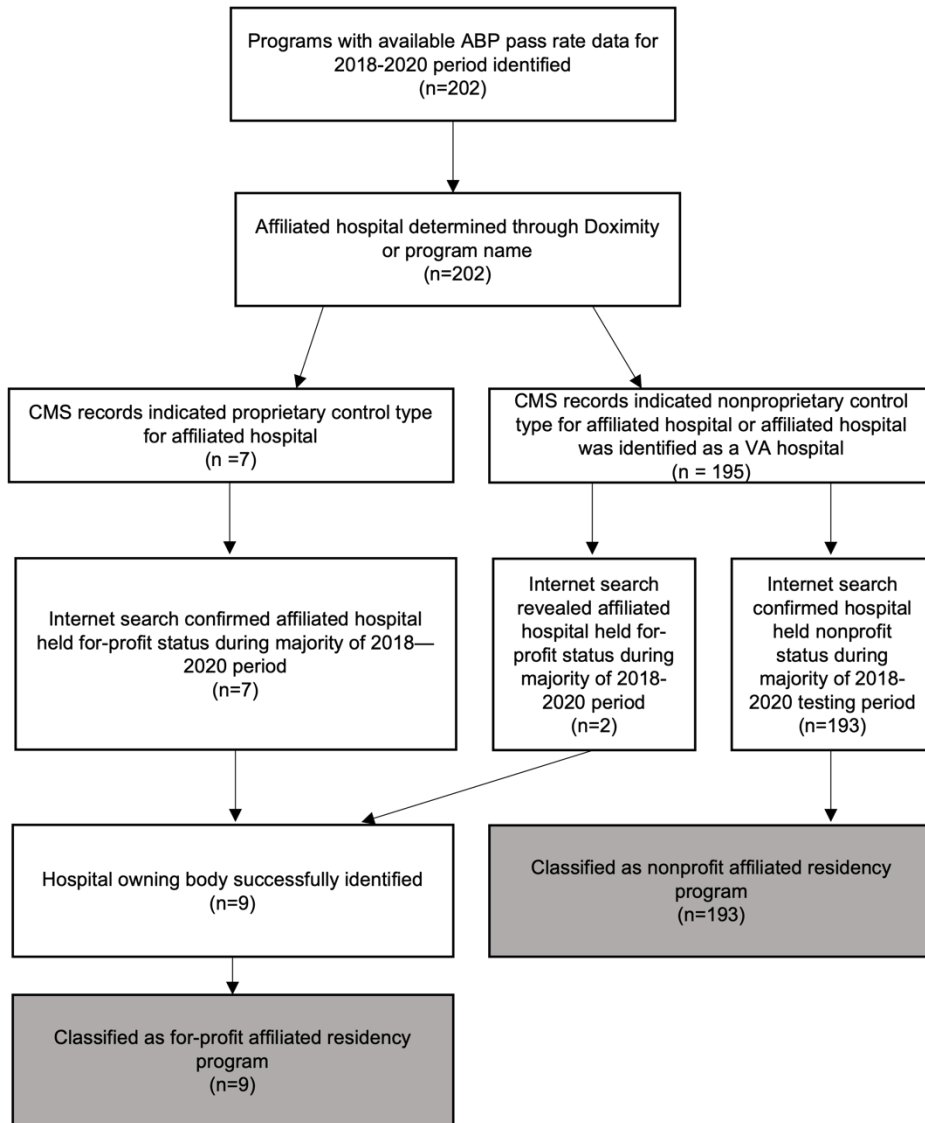
Lassner JW, Ahn J, Martin S, McQueen A, Kukulski P. Quantifying for-profit outcomes in GME: a multispecialty analysis of board certifying examination pass rates in for-profit affiliated residency programs. *J Grad Med Educ.* 2022;14(4):431-438. DOI:<http://dx.doi.org/10.4300/JGME-D-21-01097.1>

FIGURE
Internal Medicine Profit Status Decision Tree



Lassner JW, Ahn J, Martin S, McQueen A, Kukulski P. Quantifying for-profit outcomes in GME: a multispecialty analysis of board certifying examination pass rates in for-profit affiliated residency programs. *J Grad Med Educ.* 2022;14(4):431-438. DOI:<http://dx.doi.org/10.4300/JGME-D-21-01097.1>

FIGURE
Pediatrics Profit Status Decision Tree



Lassner JW, Ahn J, Martin S, McQueen A, Kukulski P. Quantifying for-profit outcomes in GME: a multispecialty analysis of board certifying examination pass rates in for-profit affiliated residency programs. *J Grad Med Educ.* 2022;14(4):431-438.
DOI:<http://dx.doi.org/10.4300/JGME-D-21-01097.1>