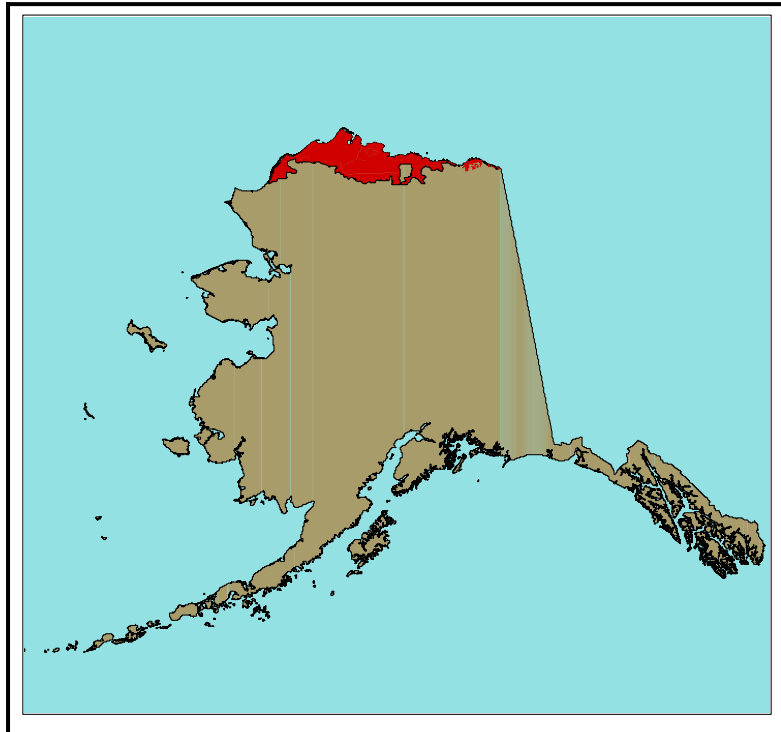


WATERFOWL BREEDING POPULATION SURVEY
ARCTIC COASTAL PLAIN, ALASKA
2007



William Larned¹
Robert Stehn²
Robert Platte²

U.S. Fish and Wildlife Service
Division of Migratory Bird Management

¹Waterfowl Mgt. Branch, 43655 KBeach Rd., Soldotna, AK 99669
²Waterfowl Mgt. Branch, 1011 E. Tudor Rd., Anchorage, AK 99503
March 12, 2008

Waterfowl breeding population survey Arctic Coastal Plain, Alaska 2007

WILLIAM W. LARNED, *U.S. Fish and Wildlife Service, Migratory Bird Management, Waterfowl Management Branch, 43655 KBeach Rd., Soldotna, Alaska 99669*

ROBERT S. STEHN, ROBERT M. PLATTE, *U.S. Fish and Wildlife Service, Migratory Bird Management, Waterfowl Management Branch, 1011 E. Tudor Rd., Anchorage, Alaska 99503.*

ABSTRACT. We replaced two annual aerial waterfowl breeding population surveys (ACP Eider Breeding Population Survey and the standard ACP Waterfowl Breeding Population Survey) with a single survey in 2007. This survey was conducted 14-19 June to coincide with the peak presence of males and pairs of eiders and other breeding waterfowl, and covered all major waterfowl habitats within the Arctic Coastal Plain of Alaska (57,335 km²). Objectives related to monitoring requirements for spectacled eider recovery criteria, harvest levels under the Migratory Bird Treaty Act, and to provide waterbird data for permit requirements for oil and gas exploration and development. Survey methods were unchanged from precedent surveys, except that the 2007 survey used 4 different levels of sampling intensity, versus uniform intensity in the previous surveys. Survey data were analyzed in two different spatial units, using 20 geographical strata for totals of the entire area, and 10 strata for historical context to coincide with the 1992-2006 Eider Survey data. The 1992-2007 population growth rates were calculated using only the 10 eider strata, to minimize bias associated with survey timing effects. We tested for population growth rates significantly greater or less than 1.0 ($\alpha=0.10$), both for all survey years (1992-2007) and for the most recent 10 years, for 10 primary species. Of these, for all survey years Red-throated loon, and long-tailed duck were <1.0 , while greater scaup, king eider, greater white-fronted goose and tundra swan were >1.0 . For the most recent 10 years, only northern pintail was <1.0 , while yellow-billed loon, greater scaup, king eider, white-fronted goose and tundra swan were >1.0 . While not significant, the 2007 spectacled eider index was the lowest since 1993, which we suspect was related mostly to late survey timing. Pacific loon, king eider, white-fronted goose and tundra swan indices were the highest on record for the eider strata. Some of these high numbers may be attributed to poor interior Alaska nesting conditions due to drought in spring and summer 2007.

Key Words: aerial survey, Alaska, arctic, breeding, distribution, eider, nesting, population, waterfowl

INTRODUCTION

From 1992 to 2006, two aerial waterfowl breeding pair surveys were conducted on the Arctic Coastal Plain (ACP) during the month of June. The first was a comprehensive aerial waterfowl breeding population survey initiated on the ACP in 1986, and continued annually to 2006. That survey (herein referred to as the "historic Standard ACP Survey"), was conducted from late June through early July, which was phenologically too late for an accurate assessment of spectacled and king eiders, the males of which typically begin to depart the breeding grounds for the post-nuptial molt soon after nest initiation, about 20 June \pm one week.

Accordingly, in anticipation of the listing of spectacled and Steller's eiders under the Endangered Species Act, a second, earlier survey was initiated in 1992 to obtain an accurate annual population index and distributional data for these two species. The latter survey (herein referred to as the "Eider Survey" has consistently provided useful data for spectacled eiders and king eiders, but has proven inadequate in sampling intensity for Steller's eiders due to their very low breeding densities. All other waterbirds recorded on the historic Standard ACP Survey were also included in the Eider Survey. Comparison of data sets from the two surveys in 2006 suggested that the Eider Survey may more precisely describe the size and distribution of the breeding component

of the spring population of most waterfowl species because it is timed prior to the main period of local nest failure and influx of molting birds from breeding grounds outside the ACP.

To help describe the difference between population indices generated from the two surveys, we plotted total indicated birds for 8 key species against median survey date for both historic Standard ACP and Eider Surveys, 1992-2006 (Fig. 1). With one exception (1992, when the Eider Survey was late due to scheduling conflict), density indices calculated from the two surveys are clearly separated as distinct clusters in these graphs (Fig. 1). A precipitous drop in indices of spectacled and king eiders during mid to late June is clearly seen in these graphs, strongly favoring the early time period for these species. Pintails, long-tailed ducks and red-throated loons all showed level trends through and among the two survey periods, suggesting that consistent survey timing within the overall survey period is not critical for tracking trend. Indices for white-fronted geese and tundra swans increased slightly through the period of both surveys, suggesting that a few may arrive in the ACP after the Eider Survey. A sharp increase in percentage of flocked birds in the sample late in the overall survey period (Fig. 2) suggests that some birds may be entering the area from elsewhere to molt. An increase in flocked pintails throughout the period (Fig. 2), however, suggests primarily local failed breeders and post-breeding males, since it is not accompanied by an overall index increase (Fig. 1). Yellow-billed loon data indicate an increase through the overall survey period (Fig. 1), which could be due to late arrival, or may be an artifact of small sample size in the historic Standard ACP Survey (two percent aerial coverage, vs. four percent for the Eider Survey).

For the objective of best describing the breeding distribution of birds we examined flocked birds as a proportion of total indicated birds by median survey date, assuming most waterfowl in post-breeding flocks are unlikely to

remain long in the vicinity of breeding territories. Data for pintails, long-tailed ducks, white-fronted geese and tundra swans all exhibited increasing trends in flocking behavior through June and early July (Fig. 2), which supports the early (Eider Survey) period as the best timing for breeding distribution data.

In consideration of the above, we consolidated the two surveys into one in 2007, incorporating all historically productive ACP habitat, but timed in early to mid June to coincide with peak presence of male eiders. The new survey will be titled as the "Waterfowl Breeding Population Survey, Arctic Coastal Plain, Alaska", and referred to in this report as the "2007 ACP Survey". This report describes the methods and results of the latter survey. For the sake of continuity, long-term trends were calculated and presented using historical data from the Eider Survey and 2007 data from the 10 survey strata matching the geographic extent of the Eider Survey, since the timing of the 2007 ACP Survey matches that of the Eider Survey. Long-term means and 2006 indices from the historic Standard ACP Survey and 2007 totals from all strata are also provided for total ACP context. Analyses are underway to reconcile and perhaps model differences in trends that are attributed to different survey timing and will be reported in a separate document.

OBJECTIVES

Objectives for the 2007 ACP Survey relate to the Spectacled Eider Recovery Plan (U. S. Fish and Wildlife Service 1996), ongoing evaluation of the potential impacts of extractive resource development, and USDI obligations for annual assessment of harvested waterfowl populations under the Migratory Bird Treaty Act of 1918, as follows:

Spectacled Eider Recovery Plan

B1.4. Monitor trends and generate breeding pair abundance estimates for the [North Slope] spectacled eider breeding population.

This task relates to the decision criteria for future de-listing or reclassifying from Threatened to Endangered. These criteria are based on population growth rate and the minimum abundance estimate, which is defined as the greater of the lower end of the 95% confidence interval from the best available estimates, or the actual number of birds counted.

Specific objectives:

1. Determine the population trend for spectacled eiders in light of recovery and reclassification criteria, including power analysis.
2. Estimate the abundance of spectacled eiders observable from the air.

Evaluation of potential impacts of Oil and Gas development on waterbird resources

Describe the distribution of observed spectacled eiders and other waterbirds within 500 meters of actual location, covering all known important waterfowl habitat on a rotational basis each 4 years using a systematic grid sampling frame. Use data to produce point location and density polygon maps describing location of observed waterbirds and areas with specified ranges of (multi-year mean) peak breeding density.

Migratory Bird Treaty Act obligations

Estimate the annual breeding population of harvested waterfowl species using the protocol specified in the "Standard Operating Procedures for Aerial Waterfowl Breeding Ground Population and Habitat Surveys in North America" (U.S. Fish and Wildlife Service and Canadian Wildlife Service 1987).

STUDY AREA AND METHODS

Aerial crew for 2007:

William Larned, *Migratory Bird Management, Soldotna, Alaska*

Robert MacDonald, *Migratory Bird Management, Juneau, Alaska*

Study area, survey design, navigation, and observation

The 2007 ACP Survey area consisted of a 57,335 km² portion of the 61,645 km² historic Standard ACP Survey area. Figure 3 shows this area (coast and green lines) with portions deleted (black lines), and the former Eider Survey area superimposed (red lines). Procedures followed the standard protocol described in the "Standard Operating Procedures for Aerial Waterfowl Breeding Ground Population and Habitat Surveys in North America" (U. S. Fish and Wildlife Service and Canadian Wildlife Service 1987). A series of straight-line transects, oriented in an east-west direction (Fig. 4), were flown in a Cessna model 206 amphibious aircraft, at 38 m altitude and 176±19km/hr ground speed. Both the pilot and the starboard observer recorded all water birds, avian predators and shorebirds observed within 200 m either side of the flight path. Observers used tape markers placed on the aircraft lift struts to aid in estimating the outer transect boundaries. Viewing angle was determined trigonometrically, and a clinometer was used to position the tape for each observer.

Transects consisted of computer-generated great-circle segments, for compatibility with Global Positioning System (GPS) navigation. Survey centerlines, along with end-point coordinates, distance figures and segment end indicators, were machine-plotted on 1:250,000 scale U.S. Geological Survey topographic maps, which were used in conjunction with GPS for navigation. Transects were spaced systematically in each of 20 geographic strata

(Fig. 4, Table 1) from a randomly-selected starting point. Spacing varied by stratum, in 4 categories of sampling intensity: Low (9.5 km), Medium (4.75 km), High (2.375 km) and Super High (1.1875 km). Stratification and spacing assignments were based on a combination of physiographic (mostly hydrographic) characteristics, historic waterfowl breeding density data, and in some cases boundaries of planning areas for current and proposed oil and gas leases. In each stratum every fourth transect was flown in 2007. As in the Eider Survey, the sampling frame will be shifted incrementally each year hereafter, requiring four years for coverage of all transects, then repeated; thus transects flown in 2007 will be flown again in 2011. Stratification slightly decreased variance of estimates of some species, and facilitate comparisons among geographic areas. Transects flown in 2007 are depicted in Fig. 4.

Flight time required to complete the 2007 ACP Survey was 41.2 hours, plus 2.0 hours for reconnaissance. These hours did not include ferry time from Anchorage to and from the survey area. The two crewmembers alternated pilot/port observer and starboard observer duties daily, which reduced pilot fatigue and enabled us to safely increase efficiency by flying slightly longer days.

Data recording and transcription

All bird observations were entered vocally into a microphone connected to a laptop computer. The computer received position data concurrently from a GPS receiver mounted in the aircraft instrument panel. These two inputs resulted in a sound file (.wav format) with voice recording, and a linked position file containing location, date and time. After the flight, the observer played back the sound file on the computer and entered the species name and group size for each observation using a custom transcribing program. The transcription program produced an ASCII text file, each line of which contained a species

code, group size, geographic coordinates, date, time, observer code, observer position in aircraft, stratum and transect identifier. The system also created a "track file" containing a list of geographic coordinates for the aircraft recorded every five seconds during flight. These data files may be used to produce maps, tables and other products describing population trends and distribution of the various taxa surveyed. A separate computer was used by each observer, and each computer was connected to the GPS and supplied with power via a 28-volt DC to 110-volt AC inverter connected to the aircraft's electrical system. The software used for this system was developed by John I. Hodges, U.S. Fish and Wildlife Service, Migratory Bird Management, 3000 Vintage Blvd., Suite 240, Juneau, AK 99801-7100.

Data Analysis

In general, waterfowl data were treated according to protocol described for the Aerial Waterfowl Breeding Ground Population and Habitat Surveys in North America (U.S. Fish and Wildlife Service and Canadian Wildlife Service 1987). That is, for all ducks except scaup, the indicated total population index is calculated as twice the number of males observed as singles, in pairs, and in groups of males up to four, plus birds in flocks of 5 or more regardless of sex composition. The standard protocol requires the indices for scaup, which have sex ratios strongly skewed toward males (*ibid.*) and all other waterbird species (monomorphics) to consist of total birds recorded, geographically extrapolated, with single birds not doubled. However, we have deviated from this protocol by doubling the less visible single dark geese (white-fronted geese, Canada geese, black brant, and sandhill cranes) to account for assumed undetected mates on nests.

We have attempted to provide an index to the number of individuals of each waterfowl species and other selected bird species present within the

survey area. The term index as used here is defined as a number that represents an unknown proportion of the population of birds occupying the survey area during the nesting season and detected by the observers, based on adult males for eiders and other sexually dimorphic species, and on individuals seen for monomorphics. While unknown, the proportion is assumed to be constant among years, and the index is used to help track population changes through time. To be consistent with the standard protocol, we have provided duck indices expanded using visibility correction factors (VCF) derived during a three-year helicopter/fixed wing study conducted in tundra habitat on the Yukon-Kuskokwim Delta (Conant et al. 1991). This is designed to provide a more realistic estimate of true population by accounting for birds present but not detected by observers in fixed wing aircraft. Untested assumptions are: 1. the helicopter crew recorded all birds present, 2. observers are equal in performance, and 3. detectability of ducks in the Yukon-Kuskokwim Delta is similar to that in the Arctic Slope. Eiders were not included in the study, so no VCF is applied.

Bias

Indices are subject to biases typically associated with aerial survey data collection. Bias in this survey comes primarily from three sources: 1. *sampling error* due to a mismatch between sampling design and spatial distribution of birds, 2. *mistiming* of the survey relative to bird breeding phenology or asynchronous bird phenology, and 3. variation in *detection* of birds within the sample. In this survey *sampling error* was addressed using ratio estimate procedures described by Cochran (1977), and the calculated variance is used to produce 95% confidence intervals for the population estimates. Survey *timing* is designed to coincide with the peak presence of males in the case of ducks, and the presence of peak numbers of all surveyed species on breeding territories in intact pairs. Proper timing is especially important for eiders and

other sea ducks, which are normally present on the breeding grounds only from arrival until shortly after nest initiation, when they move offshore for the postnuptial molt (Kistchinski and Flint 1974, Lamothe *in* Johnson and Herter 1989, for spectacled and king eider, respectively). Variations in timing of arrival and departure between individual spectacled eider males on a study area in the Prudhoe Bay vicinity suggest that there may be few, if any, days when all breeding males are present in the survey area at the same time, especially in years of early spring melt (Troy 1997). Median nest initiation dates for Spectacled eiders at Prudhoe Bay from 1993 to 1996 varied from 7 to 16 June (average 1982-96 = 15 June), and telemetry data suggest that male departure begins within about 3 days of that date, and is more synchronized in the years when it commences later (*ibid.*). Most spectacled eider males depart the tundra for offshore molting areas by 20 to 25 June. Comparable data are not available from other parts of the ACP, but aerial observations from the Eider Survey since 1992 suggest consistency within approximately ± 1 week among areas and years. King eider phenology is similar, but the period of male presence is normally more protracted and less synchronous than that of spectacled eiders, perhaps because: 1. king eiders utilize a greater diversity of wetland types which thaw at different times, and 2. king eiders that breed on the ACP are widely distributed during the winter (A. Powell and S. Opper, pers. comm., Phillips 2005), so timing of spring migration would likely vary among wintering populations. Daily counts of male king eiders on a Study area immediately southeast of Teshekpuk Lake in 2002 indicated a stable presence from June 8 to 16, with rapid departure of most males on 18 June (L. Phillips, pers. comm.). On 18 June a brief spike in the number of males present suggested a transient group of departing males moving through the study area. An earlier study in Canada found males departing from Bathurst Island, N.W.T. rather abruptly and synchronously from one week to 10 days after clutch initiation (Lamothe

1973). For the Eider Survey and the 2007 ACP Survey we assumed that proper timing for spectacled eiders is adequate for king eiders.

Our procedure for determining proper survey timing consisted of the following: 1. We monitored weather, and ice and snow cover data, planning to arrive in the survey area when ponds and tundra vegetation were just becoming available to nesting eiders over most of the arctic slope. 2. We contacted biologists in Prudhoe Bay and Barrow for their observations on eider phenology. 3. We flew a reconnaissance survey to determine whether or not waterfowl, spectacled eiders in particular appeared to be occupying breeding territories as pairs, rather than in mixed-sex/species flocks. Our observations from past years in this area suggest this behavior normally occurs as soon as there is extensive open water in most shallow vegetated wetlands and tundra vegetation is mostly snow-free around pond margins.

To determine retrospectively the appropriateness of the timing of our survey for comparison of data quality among years for spectacled and king eiders, and long-tailed ducks and northern pintails, we used a ratio of lone drakes (males unaccompanied by females) to total males (with and without females), averaged over the entire survey. This ratio, called the lone-drake index (LDI), has been used for many years in the northern prairies of Canada and the U. S. (U.S. Fish and Wildlife Service and Canadian Wildlife Service 1987). The assumption inherent in this index is that the proportion of lone or grouped males in the surveyed population will increase as the season progresses because males remain visible on breeding ponds, while females spend more time with nesting activities. This index is easy to interpret for dabbling ducks, which normally remain on the breeding grounds after nest initiation to molt in local wetlands, whereas male eiders and other sea ducks depart the breeding grounds for distant, mostly marine molting habitats immediately after nest initiation, making

them unavailable for observation. Hence, it is expected that the ratio will reach a peak at or slightly beyond the peak of nest initiation, followed by an abrupt drop as post-breeding males depart the survey area while birds still visible may be mostly unsuccessful inexperienced pairs which stay on the breeding grounds beyond peak departure of successful males. This pattern has been observed in the Prudhoe Bay area (Warnock and Troy 1992). Above-noted shortcomings notwithstanding, we consider the average lone drake ratio for the survey period and a plot of daily totals of this ratio helpful when considered in combination with other indicators of phenology, especially in determining the beginning of the survey window.

We have made little progress in addressing *detection bias*. The survey is assumed to track the populations of birds that visit the ACP during the breeding season. Of this total, some birds will not be represented in the sample because: 1. They have not yet arrived in the survey area; 2. They have left the survey area; 3. They have flushed from the sample transect before detection due to disturbance by the survey aircraft; 4. They are not visible from the aircraft (hidden by vegetation, terrain, aircraft fuselage etc.); 5. They are misidentified; 6. Observers fail to see them due to any of several variables of detection bias, such as fatigue, experience level, visual acuity differences, distractions, sunlight conditions, presence or absence of snow and ice, cryptic bird behavior, and work load (density of other birds or objects competing for the observer's attention). As previously mentioned, we have attempted to minimize the effects of numbers 1 and 2 by proper survey timing. Aerial survey crews working in other areas have attempted to compensate for the net effect of all the other variables by ground-truthing a sub-sample using ground or helicopter crews (US Fish and Wildlife Service and Canadian Wildlife Service 1987), and using those data to calculate visibility ratios to adjust operational survey data. During the 2001 Eider Survey we conducted a fixed-wing/helicopter detection study covering a 270

km² subset of our operational transects. The results of this study were unsatisfactory in that our fixed-wing count often exceeded the helicopter count, suggesting a flaw in design or implementation. Therefore we default to an unadjusted annual index to abundance, for which we strive to minimize effects of observer bias by using the same observers and methods to the extent possible. This year we analyzed data from individual observers as well as that from combined observers to examine the relative contribution of observer effect to variation of results among species.

RESULTS

Habitat conditions and survey timing

Spring breakup began a little later than normal in 2007, with reports of 60 percent snow cover remaining in the Deadhorse/Kuparuk/Colville Delta area on 5 June. Imagery from the NASA Modis Rapid Response website (<http://rapidfire.sci.gsfc.nasa.gov/>) showed extensive snow and ice cover until 5 June, but warmer sunny weather on 7 and 8 June melted most of the snow, and the 9 June image showed most tundra clear of snow over the entire survey area. Technical and scheduling factors delayed our arrival in Deadhorse until 12 June. Results of a brief aerial reconnaissance that day, limited to the Deadhorse/Kuparuk/Nuiqsut area, showed habitat and waterfowl phenology well advanced, but fog and wind kept us from flying our first transects until 14 June. Both crewmembers were pilots, and alternating pilot duties enabled us to reduce pilot fatigue and safely fly longer days, finishing on 19 June. During the survey, water levels seemed about average, and availability of nesting cover and open water were not limited by residual snow and ice.

The overall ratio of lone males to total males during the survey, a rough measure of survey timing in relation to nest initiation, was well above average, suggesting the 2007 survey was conducted later in relation to nesting than most

years (Table 2). The daily trend in this measure showed a gentle upward slope for long-tailed duck and pintail, consistent with other recent years, while both spectacled and king eiders had downward trends, which for eiders in our opinion is consistent with the beginning of post-nest-initiation departure of males (Figure 5). In summary, we feel satellite imagery, observations during the survey, and LDI interpretation all suggest a survey slightly past the optimal period for describing the breeding abundance and distribution of most ducks and geese, but probably timed well for other waterbirds such as loons, gulls and jaegers.

Population indices for selected species

Totals for 2007 sample data (singles, pairs and flocked birds in the sample), as well as indices calculated from these data, are presented in Table 3 for the eider strata (strata 3-6, 9, 11, 15, 18-20), and Table 4 for all strata. Table 5 presents long-term population trend slopes, growth rates, and the power of the survey to detect trends (expressed as the minimum number of years required to detect a growth rate equivalent to a growth or decline of 50 percent in 20 years) using data from the eider strata only. Table 6 provides a comparison of indices from all surveyed strata (2007) with 2006 indices and 1986-2005 means from the historic Standard ACP Survey (Mallek et al. 2007). Figures 6-23 include stacked bar graphs and tables describing the size and composition of the 2007 and historic population indices for selected species for the 10 eider strata. We used Eider Survey data for trend because of its similarity to 2007 in timing and spatial coverage. Population growth rates are given both for the full 16 years of data (15 for eiders, see figs. 16 & 17) and for the most recent 10 years. Please note that only bias resulting from spatial sampling error is accounted for in these calculations, as other sources (e.g. observer effects, phenological timing) are unmeasured in this survey. Note also that in addition to composite indices, bar graphs include depictions

of indices derived from data from individual observers: the blue lines represent indices from observer Larned, who observed on all Eider Surveys 1992-2007, mostly from the left (pilot) seat, while the yellow lines trace indices from various other observers who usually occupied the right seat. The discussion section contains some general observations about apparent observer effects suggested by these graphics. Spatial breeding distribution for all of the more abundant species has been well described at a scale commensurate with the 4-year sampling intensity (~8 percent for the historic Standard ACP Survey and 16 percent for the Eider Survey), and is available in past annual reports from both historic surveys. Since the 2007 design is new, we did not have adequate data to generate equivalent figures showing density isopleths for the various species this year, and will likely not do so until we accumulate a 4-year data set. Maps showing locations of 2007 observations by species are available by request (william_larned@fws.gov, or call 907-260-0124). Following are results and comments by species. Indices and trends relate to the eider strata and Eider Survey only, unless otherwise noted.

Loons

The 2007 yellow-billed loon index (1,405) was the second highest since 1992, and the population growth rate indicated a significant positive trend over the most recent 10 years (Tables 3-6, Figure 6). The large number of singles in the sample (Fig. 6) is consistent with a phenologically late survey when nest initiation should be well under way (North and Ryan 1988). Distribution was similar to other years: densest in the area between Teshekpuk Lake and Mead River. The Pacific loon index (30,507) was the highest on record for the Eider Survey, and 46 percent higher than the long-term average (Tables 3-6, Fig. 7). The 16 year and 10 year growth rates still do not differ significantly from 1.0 (Table 5). The high densities of Pacific loons occur as far from the coast as we have sampled wherever

there were adequate pond densities. The 2007 red-throated loon index (2,846) was the highest since 1996, and more than double the 2006 index (Tables 3-6, Fig. 8). Our observations on habitat selection are consistent with those of Bergman and Derksen (1977); that is, red-throated loons on the ACP tend to select small shallow wetlands, apparently due to competition with the larger and more abundant Pacific loons, and mostly within about 20 km of the coast.

Jaegers

Jaeger species are combined for this survey to help avoid diversion of observer focus from eiders and other higher priority species. The jaeger index fluctuates widely following prey abundance (primarily North American brown lemming, *Lemmus trimucronatus*). Lemming populations spiked across much of the arctic coastal plain in 2006, and were still present in good numbers in many areas in 2007. The 2007 jaeger index (5,502) was 38 percent lower than that of 2006, but still well above the mean of 4,156 (Tables 3-6, Fig. 9). The extremely variable annual index does not indicate a significant trend in either short or long term (Fig. 9).

Gulls & terns

Discounting birds in flocks, a category whose annual value can vary widely if the year's transects happen to cross large breeding colonies or transient flocks, the glaucous gull index has remained level and stable in both short and long terms (Fig. 10). This year's index of 19,345 was the highest yet, particularly the single component, possibly due to the lateness of the survey, with many birds observed incubating. The Sabine's gull index (10,113) was also the highest on record, and 47 percent above the 16-year mean (Tables 3, 5). This species shows a significant positive growth rate (1.098, 90%CI=1.041-1.158) over the past 10 years. The arctic tern index increased steadily through 2000,

resulting in a significant positive growth rate from 1992-2007, but the trend has been more level since 2000 (Fig. 11, Table 5). The 2007 index (15,040, Table 3) is the highest on record.

Ducks

Most duck indices in 2007 were consistent with trends established over the last several years of the Eider Survey (Figs. 12-19). The 2007 red-breasted merganser index (858), while not the highest on record, is still well above the long-term mean (Table 3, 5, Fig. 12), contributing to the significant positive growth rate over 10 year and 16 year time periods. However, the 2007 all-strata estimate (1,822 expanded using VCF, Table 4) was below both the 2006 and long term average figures for the historic Standard ACP Survey (Table 6), suggesting a late migration pattern for this species. Most red-breasted mergansers have been recorded along river corridors, well inland.

Mallard, American wigeon and green-winged teal are recorded at such low numbers that we have little confidence in trends, though recording no wigeon this year contributed to a significant negative trend for the most recent 10-year period for that species (Table 5).

Though higher than the preceding two years, the pintail index (44,232) did not rebound enough to break the significant decline over the past 10 years, and was still below the long-term average (Fig. 13). The all-strata 2007 index (185,532, expanded) was well above the 2006 index from the historic Standard ACP Survey (150-161), but below the long-term mean of 224,011 (Table 6)

The 2007 scaup index (7,488) was the second highest on record, and well above the long-term mean (4,246, Fig. 14). ACP scaup, which are assumed to be greater scaup or "unknown" based on wing characteristics when observed flying, continued their increasing trend in 2007. The growth rate is gradual in the long term, but steeper over the most recent 10 years (Fig. 14).

The 2007 all-strata scaup index also exceeded both the 2006 and long-term mean figures for the historic Standard ACP Survey (Table 6). Most scaup have been recorded in close association with river systems.

The 2007 long-tailed duck index (24,479) was 19 percent below the long-term mean and the 16-year trend was significantly negative (growth rate 0.980, 90%CI 0.963-0.997, Fig. 15). Aerial observations of this species are difficult to accurately interpret due to the similar coloration of spring males and females relative to other species. Perhaps this explains the large and variable discrepancies among observers (Fig. 15).

Assuming the bias of the consistent observer (observer 1, Fig. 15) is more consistent among years, the much steeper slope of the trend line of the starboard observer (obs. 2) suggests that most of the slope of the combined trend is an artifact of the bias of the second observer, and for this species it may be better to use only the data from observer 1.

The 2007 spectacled eider index (4,676) was the lowest on record since 1993, and 30 percent below the long-term mean, but the negative trend in breeding population was not significant in either the long term or 10 year context (Table 5, Fig. 16). Considering the observations made earlier in this report regarding survey timing, it appears likely that the substantial drop in this year's index was at least partly due to late survey timing. Ten of 232 indicated birds in the sample were recorded outside the 10 eider strata.

The king eider index (17,685) was the highest on record for the Eider Survey, and 34 percent above the long-term mean (Table 5, Fig. 17). The positive trend was significant in both long-term and the recent 10 year period.

Common eiders nest primarily on barrier islands and other coastal habitats, most of which are not sampled by this survey. A specific coastal survey is conducted for this species, by C. Dau and others (Dau and Larned 2007).

There are so few Steller's eiders detected during this survey that it is used primarily to document occurrence and long-term distribution rather than to detect a meaningful trend. This year was classified by researchers as a "non-breeding year" in the Barrow area and the annual survey by Alaska Biological Research, Inc. was abbreviated (N. Rojek pers. Comm., R. Ritchie, pers. comm.). Nevertheless, we recorded 7 observations of Steller's eiders, 4 of which were among a group of large lakes about 40 km SE of Barrow, an area reported as the general location of most of the sightings by the ABR aerial crew. Our index (338) was the second highest in the 16 years of the Eider Survey (Fig. 18).

Nearly all scoters recorded on the Eider Survey 1992-2006 were white-winged scoters, and most of those were in stratum 11 (Fig. 4) located south of Teshekpuk Lake, primarily along the drainages of Fish Creek and the Ikpikpuk River. The 2007 white-winged scoter index (596) continued a significant long-term upward trend (Table 5, Fig 19). However, most scoters in 2007 were recorded in strata 12 and 13, south of the eider strata, producing a much higher estimate for the entire survey area (3,437, or 4,021 expanded by VCF, Table 4). The long-term mean for the historic Standard ACP Survey was substantially higher (10,437, Table 6), possibly because the latter survey was flown later and scoters are known to be late breeders, and/or there is normally a late influx of molt migrants. Note that the historic data from the historic Standard ACP Survey contains a large component of scoters unidentified to species, hence the discrepancy between "all scoters" and the total of white-winged and black scoters.

Geese and swans

This survey does not adequately sample snow geese, which occur mainly in isolated coastal breeding colonies. The spectacular 2007 index (64,110, Table 3) resulted from one transect

bisecting a large breeding colony on the Ikpikpuk River Delta.

The white-fronted goose index (162,441, Fig. 20) is also spectacularly high this year – 52 percent higher than that of 2006, 104 percent greater than the long term mean for the Eider Survey, and the 2007 all-strata index (226,952, Tables 4, 6) even exceeds the highest index from the historic Standard ACP Survey (192,426 in 1999, Mallek et al. 2007). The close agreement among observers in 2007 (Fig. 20) lends confidence to this estimate. The high population this year may have resulted from molt migration of non-breeding and failed breeding birds from the interior where low spring and summer water levels depressed breeding.

The 2007 Canada goose indices were 17,285 (eider strata, Table 3) and 28,346 (all strata, Table 4). The 2007 Canada goose index in the eider strata was the highest since the spike in the late Eider Survey year of 1992, and the 2007 all-strata index (28,346) was the highest since 1999 (Mallek 2007).

Most Black brant nest colonially on the North Slope, so trends are difficult to detect with our systematic transect survey design. The 2007 index (10,138) was similar to that of 2006, though quite different in composition (Fig. 21). The all-strata index was also very similar to the long-term average from the historic Standard ACP Survey (Table 6). Our data suggest a significant positive growth rate over the Eider Survey 16-year history and the most recent 10 years (Table 5, Fig. 21), but we suspect this may be spurious, as much of our annual brant sample consists of a variable component of non-breeders or failed breeders from western Alaska (Ritchie et al. 2002) evidenced by the high proportion of flocked birds in our sample most years (Fig. 21).

Ritchie et al. (2002) did not detect a significant upward trend in breeding black brant on the North Slope, and Mallek et al. (2005) could not detect a trend due to high sampling error.

The 2007 tundra swan index (10,231) was the highest on record for the eider strata (Fig. 22), and the all-strata index (13,444) was well above that of 2006 and the long-term mean (10,174, 9,961 respectively, Table 6). Tundra swan indices indicate a significant positive growth rate for both long-term (1.027) and 10-year (1.038) reference periods (Table 5, Fig. 22).

For a detailed discussion of North Slope snow goose and black brant colonies see Ritchie et al. (2007).

Raptors, Ravens, other birds

Despite concerns about raven populations expanding on the North Slope in response to increased anthropogenic nesting habitat (buildings and other artificial structures) and year-round food sources (garbage), we have detected neither a positive growth rate nor a geographic shift, using our small sample (Table 5). The likelihood of our detecting ravens among industrial and residential facilities is low, as they normally spend a large part of their time on or near such structures, which we intentionally avoid during our surveys due to regulatory and safety considerations. In addition we expect detection of dark birds associated with structures would be poor.

Owl populations are extremely variable on the North Slope, typically following lemming population cycles. Although brown lemmings were apparently much less abundant in 2007 than in 2006 (personal observation and numerous contacts in Barrow), we still recorded above-average numbers of short-eared and snowy owls (eider strata indices 120 and 1,602, respectively, Table 3, Fig. 23). Most of the snowy owl observations were within 30 km of the coast, from Harrison Bay to Barrow, with a few others widely scattered elsewhere.

We have recorded very few sandhill cranes during the Eider Survey (2007 ACP Survey index from 10 eider strata = 73, Eider Survey 1992-2007 mean = 122, Table 5). We began recording

shorebirds during the Eider Survey in 1997, largely as a measure of timing of arrival on the breeding grounds, and large-scale distribution. Some shorebird species are difficult to distinguish on aerial surveys, and of low priority for this survey, so we split them into 2 categories: "Small" (*Charadrius spp.*, *Pluvialis spp.*, *Calidris spp.*, *Arenaria spp.*) and "large" (*Numenius spp.*, *Limosa spp.*). Beginning in 2006, we pooled all shorebird observations. The shorebird index growth rate (0.973) is not significantly different from 1.0 (Table 5).

CONCLUSIONS

The species of greatest interest in terms of objectives for this survey are yellow-billed loon (species of international concern, proposed for ESA listing), red-throated loon (species of statewide concern, high proportion of Alaska population in ACP), Pacific loon (high proportion of Alaska population in ACP), northern pintail, greater scaup, king eider, long-tailed duck, white-fronted goose (harvested species of international concern, and ACP populations numerically significant in Alaska, North America), Tundra swan (ACP population comprises about 10% of the harvested eastern population, has management issues related to expanding population, causing habitat degradation and crop damage), and spectacled eider (listed as threatened under the ESA, ACP is one of three largest global breeding populations).

All these populations are at some risk from detrimental effects of extractive resource development and other changes related to expanding human populations. The other species recorded on this survey, while important contributors to the biodiversity of the arctic coastal ecosystem, are not addressed adequately by this survey design (e.g. Steller's eider, common eider, snow goose, common raven), and/or are present as such a small proportion of their range-wide population that even a large change in index would likely not elicit

management action (e.g. mallard, American wigeon, northern shoveler).

Since 2007 was the first year of the design combining the Eider and the historic Standard ACP Survey, and apparently an anomalous year for phenological timing, it is premature to evaluate its efficacy compared to its predecessors. However, we are confident that the primary survey objectives are adequately addressed.

The trends for individual observers in the population trend graphs for these focal species (Figs. 6-8, 13-17, 20) suggest that for most years and species, the constant observer/pilot had higher counts than the other observer. This is not surprising since the one constant observer has much more experience than the others both in general and specifically on this project. Regarding individual species, some show very close agreement among observers while others are very different. Estimates are consistent among observers for both spectacled and king eiders (Figs. 16 and 17), even despite small sample sizes. Reasons for this strong agreement may include positive focal bias: observers are aware that these are high priority target species, so they work with greater diligence to develop an appropriate search image. Loons (Figs. 6-8) often dive as the aircraft approaches, putting them out of sight as the aircraft passes. The pilot ordinarily spends more time than the observer looking ahead (for obvious safety reasons), and thus may record more loons. Pintails (Fig. 13) and long-tailed ducks (Fig. 15) are more difficult to detect compared to the other priority ACP species, due both to more cryptic coloration, and because they are often scattered about in very small wet depressions in vast upland areas where detection is difficult and observer vigilance and focus may vary considerably, adding variability to detection rates. Observer performance for white-fronted geese appears less variable (Fig. 20), probably because white-fronts are large and usually flush at the approach of the plane, making them easy for most observers to detect

and identify. Tundra swans are well-distributed, large, white and rarely flush when surveyed, resulting in detection rates close to 1.0 (Conant et al. 1991) and populations monitored well by this survey. Hopefully this discussion provides helpful insight into reasons for variation in detection rates among species. A detection rate study for the Arctic Coastal Plain would be extremely useful, but challenging due to the relatively low densities of birds and expensive logistics.

RECOMMENDATIONS

We recommend continuation of the survey as in 2007, except for the following:

Due to the "low" sampling intensity selected for Stratum 1 (Arctic National Wildlife Refuge, Fig. 3), and its size and configuration, there will often be only a single transect flown, which ends far away from our field base at Deadhorse, and leaves the stratum poorly sampled. This area has very low densities of waterfowl and the coastal zone, which is most important, is sampled during the late-June common eider survey. We plan to either drop the stratum altogether, or apply "medium" sampling intensity, which in most years should result in one transect each direction, replacing "deadhead" with productive survey flight time on the return trip to Deadhorse.

We welcome comments on these proposals, or other suggestions for improving the survey.

ACKNOWLEDGMENTS

The authors would like to thank Rob MacDonald for the excellent job during his first season as observer and alternate pilot on this survey. Special thanks to the Bureau of Land Management for supporting the additional aerial coverage in the Teshekpuk Lake region.

LITERATURE CITED

- Bellrose, F. C. 1980. Ducks, geese and swans of North America. Third edition. Stackpole Books, Harrisburg, Pennsylvania. 540p.
- Bergman, R. D. and D. V. Derksen. 1977. Observations on Arctic and Red-throated loons at Storkersen Point, Alaska. *Arctic* 30: 41–51.
- Cochran, W. G. 1977. Sampling techniques. Third edition. John Wiley and Sons, Inc., New York, N.Y. 428p.
- Conant, B., C. P. Dau and W. Larned. 1991. Yukon Delta Alaska helicopter/fixed wing comparative waterfowl breeding population survey. Progress Report III. Unpubl. Rep. U.S. Fish and Wildl. Serv.
- Dau, C. P. and W. W. Larned. 2007. Aerial population survey of common eiders and other waterbirds in near shore waters and along barrier islands of the Arctic Coastal Plain of Alaska, 22-24 June 2007. Unpubl. Rept., U. S. Fish and Wildlife Service. 20p.
- Johnson, S. R., and D. R. Herter. 1989. The birds of the Beaufort Sea. BP Exploration (Alaska) Inc. Anchorage, Alaska. 372p.
- Kistchinski, A. A., and V. E. Flint. 1974. On the biology of the spectacled eider. *Wildfowl* 25:5-15.
- Lamothe, P. 1973. Biology of king eider *Somateria spectabilis* in a fresh water breeding area on Bathurst Island, N. W. T. M. Sc. Thesis. U. of Alberta. Edmonton. 125p.
- Mallek, E. J., R. M. Platte and R. A. Stehn. 2005. Aerial breeding pair surveys of the Arctic Coastal Plain of Alaska – 2004. Unpubl. rept., U.S. Fish and Wildl. Serv., Mig. Bird Manage., Fairbanks, Alaska. 25p.
- Mallek, E. J., R. M. Platte and R. A. Stehn. 2007. Aerial breeding pair surveys of the Arctic Coastal Plain of Alaska – 2006. Unpubl. rept., U.S. Fish and Wildl. Serv., Mig. Bird Manage., Fairbanks, Alaska. 25p
- Phillips, L. M. 2005. Migration ecology and distribution of king eiders. M. S. Thesis, Univ. of Alaska, Fairbanks, Alaska.
- Ritchie, R. J., T. Obritschkewitsch, J. Shook, R. Burgess and J. Rose. 2007. Surveys for nesting and brood rearing brant and lesser snow geese, Barrow to Fish Creek Delta and lesser snow goose banding near the Ikpikuk River Delta, Alaska, 2006. Unpubl. rept. submitted to North Slope Borough Department of Wildlife Management. ABR, Inc., Fairbanks, Alaska. 45p.
- Serie, J. R. and J. B. Bartonek. 1991a. Population status and productivity of Tundra Swans *Cygnus columbianus columbianus* in North America. Pp. 172–177 in *Proceedings of the Third IWRB International Swan Symposium* (J. Sears and P. J. Bacon, eds.). *Wildfowl-Suppl.* No. 1, Oxford, UK.
- Troy, D. 1997. Distribution and abundance of spectacled eiders in the vicinity of Prudhoe Bay, Alaska: 1996 Status Report. Unpubl. Rep. for BP Exploration, Troy Ecological Res. Assoc., Anchorage, Alas. 11p.

- U. S. Fish and Wildlife Service. 1996.
Spectacled eider recovery plan.
Anchorage, Alas. 157p.
- U. S. Fish and Wildlife Service, and Canadian
Wildlife Service. 1987. Standard
Operating procedures for aerial waterfowl
breeding ground population and habitat
surveys. Unpubl. Manual, U. S. Fish and
Wildl. Serv., Migratory Bird Management,
Laurel, Maryland. 98p.
- Warnock, N. D., and D. M. Troy. 1992.
Distribution and abundance of spectacled
eiders at Prudhoe Bay, Alaska: 1991. BP
Exploration (Alaska) Inc., Anchorage,
Alaska. 11p

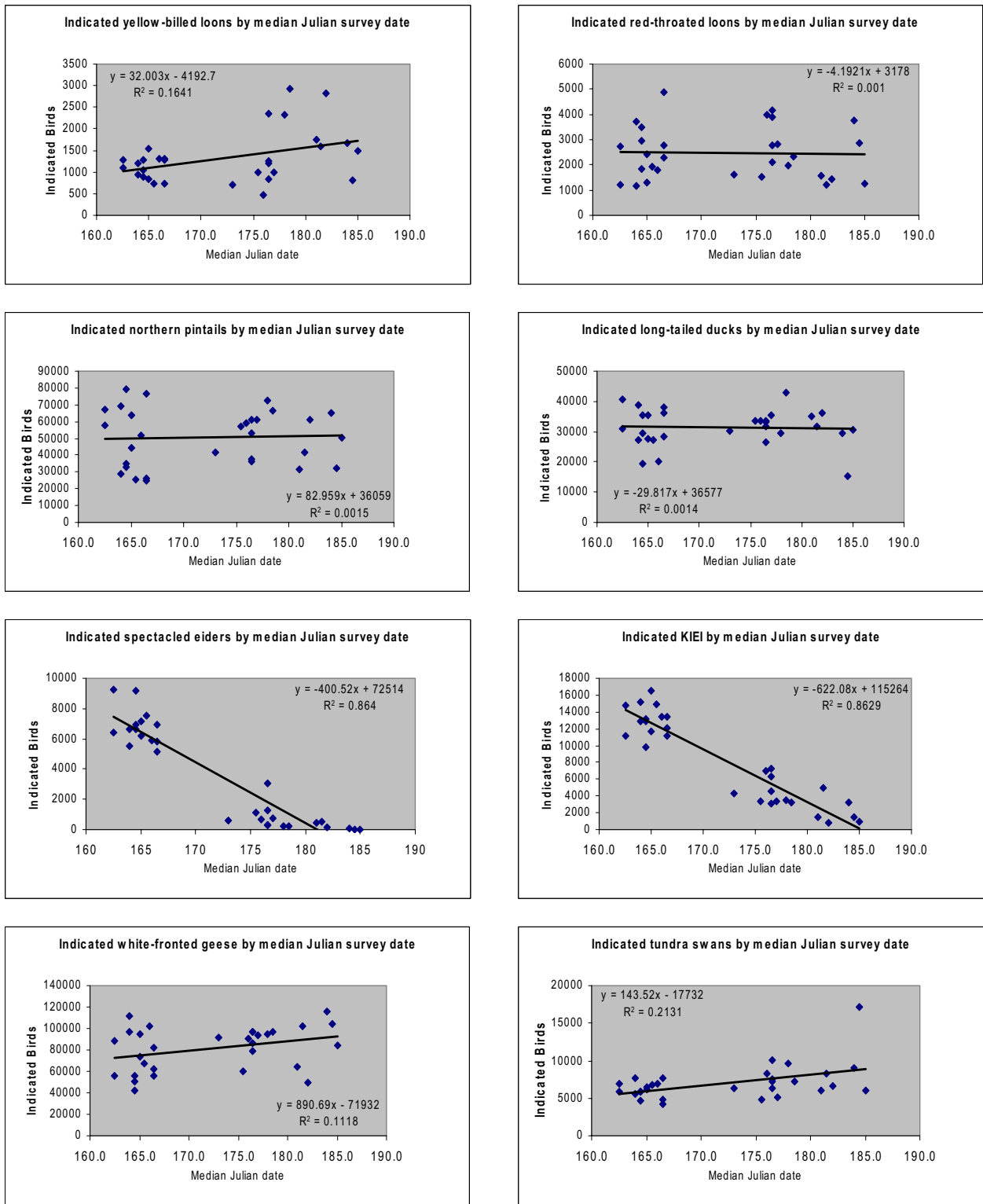


Figure 1. Indicated birds of selected species by median Julian survey date, Eider and Standard ACP Surveys, arctic coastal plain of Alaska, 1992-2006.

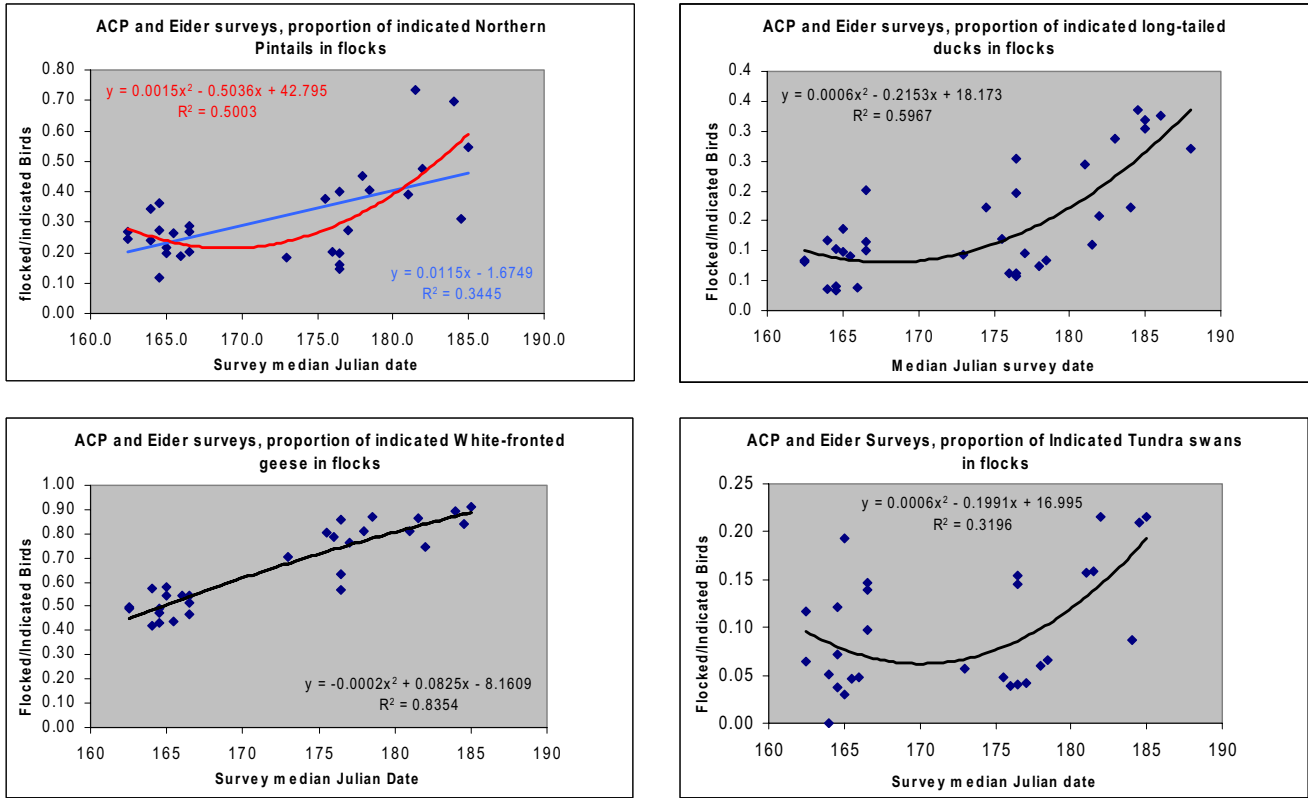


Figure 2. Proportion of birds in groups of 3 or more in the survey sample, Eider and Standard ACP Surveys, arctic coastal plain, Alaska, 1986-2006.

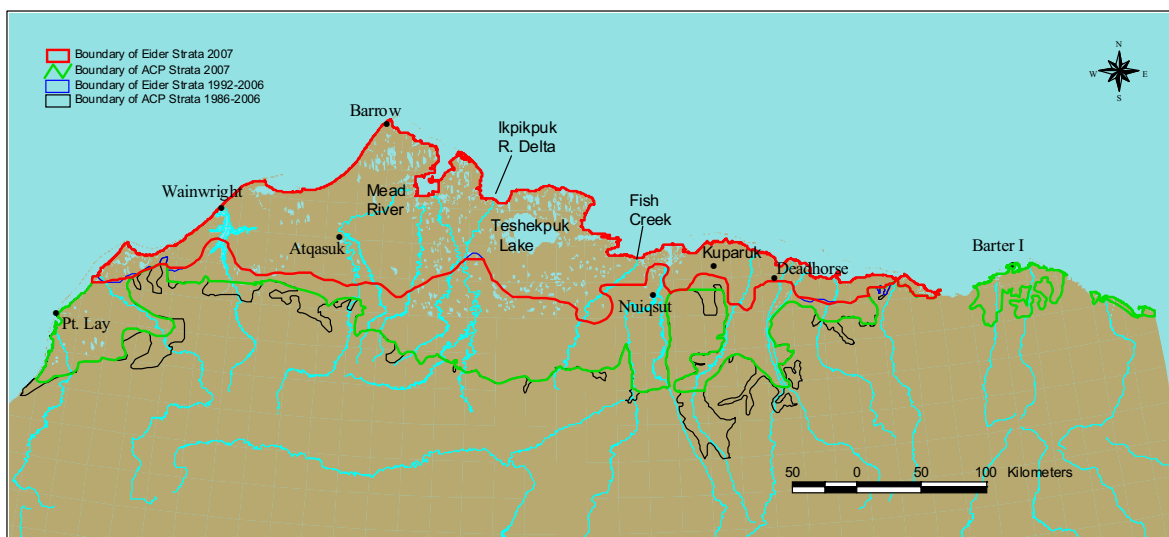


Figure 3. Boundaries of the 2007 ACP Survey, Arctic Coastal Plain, Alaska (green lines, total 57,335 km²), with boundary of eider strata (red lines, total 30,465 km²) used for comparison with 1992-2006 Eider Survey for trend analysis. Also shown are portions of the 1986-2006 historic Standard ACP Survey (black lines) and the Eider Survey (blue lines) which were eliminated from the current design.

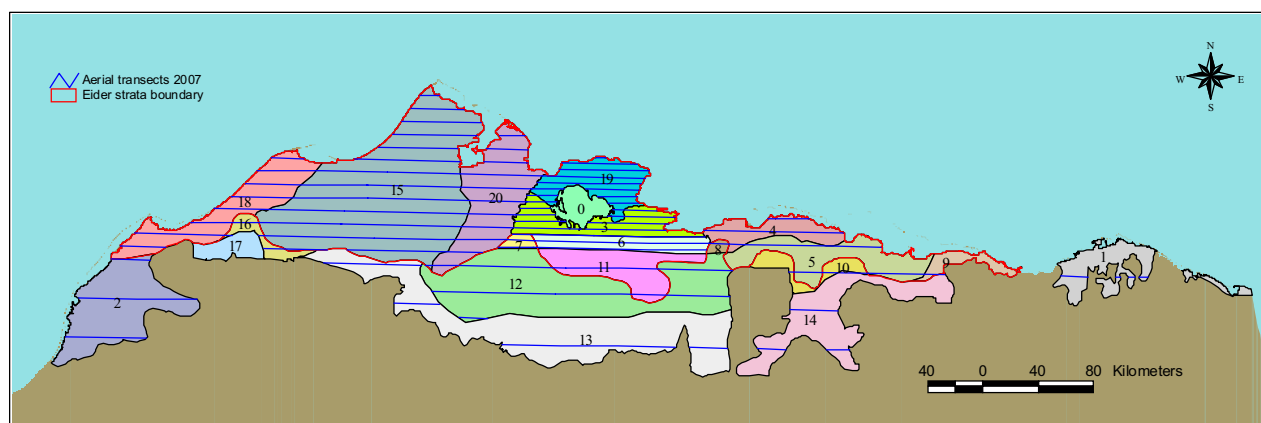


Figure 4. Spatial design of the aerial waterfowl breeding population survey, Arctic Coastal Plain, Alaska, June 2007.

Table 1. Sampling design by stratum, aerial waterfowl breeding population survey, Arctic Coastal Plain, Alaska, June 2007. ID numbers refer to Fig. 3, above.

ID	Stratum Name	Stratum Area km ²	Sample Area km ²	Sample % of Stratum Area	ID	Stratum Name	Stratum Area km ²	Sample Area km ²	Sample % of Stratum Area
0	Non-habitat				13	S Central Low	7,652	104	1.4
1	Arctic NWR Low	1,812	17	0.9	14	Sag Low	3,571	33	0.9
2	Pt Lay Low	3,916	68	1.7	15	Barrow Hi	11,358	473	4.2
3	Teshkepuk SHi	2,019	187	9.3	16	S Kuk Hi	582	20	3.4
4	Colville Hi	1,423	57	4.0	17	S. Kuk Low	748	2	0.3
5	Prudhoe Med	2,581	62	2.4	18	Icy Wain Hi	3,093	127	4.1
6	S Teshkepuk SHi	1,362	99	7.3	19	N Teshkepuk SHi	2,044	171	8.3
7	SW Teshkepuk SHi	226	20	8.6	20	E Dease Hi	3,768	155	4.1
8	S Colville Hi	128	6	4.5					
9	Canning Low	577	5	0.8		All Low:1,2,9,13,14,17	18,276	228	1.2
10	Sag Med	784	11	1.4		All Med:5,10,11,12	13,058	247	1.9
11	Central Med	2,240	41	1.8		All Hi: 4,8,15,16,18,20	20,351	838	4.1
12	S Eid Med	7,453	133	1.8		All SHi: 3,6,7,19	5,650	477	8.4

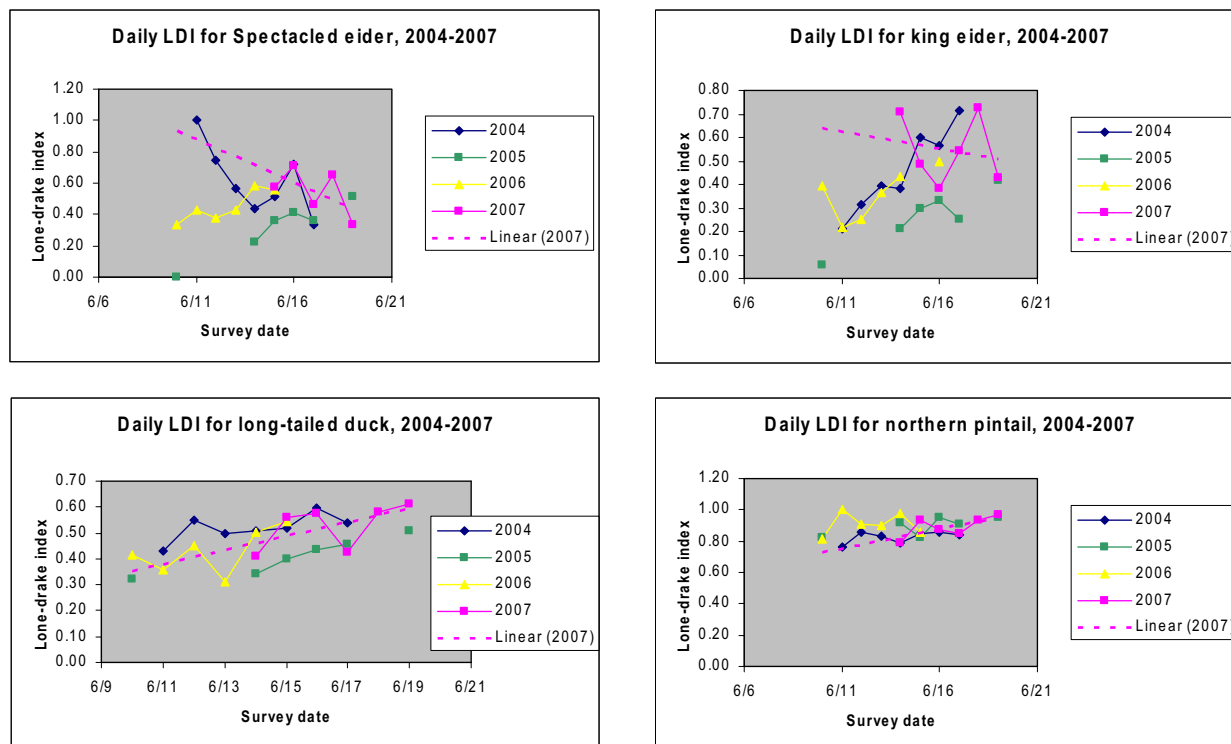


Figure 5. Daily ratio of lone males to total males (lone males plus males in pairs) of selected duck species observed during the Eider Survey (2004-2006) and the 2007 aerial waterfowl breeding population survey, arctic coastal plain, Alaska.

Table 2. Average and range of ratios of lone males to total males (lone males plus males in pairs) of selected duck species observed during the Eider Survey (1992-2006) and the ratios for the 2007 aerial waterfowl breeding population survey, arctic coastal plain, Alaska.

Species	LDI Avg.			LDI 2007
	1992-2006	LDI SE	LDI range	
Spectacled eider	0.49	0.08	0.29-0.59	0.58
King eider	0.35	0.12	0.14-0.58	0.50
Long-tailed duck	0.49	0.04	0.39-0.57	0.54
Northern pintail	0.82	0.07	0.67-0.90	0.89

Table 3. Combined observations by starboard and port observers on aerial survey transects, arctic coastal plain, Alaska, June 2007, with observable population indices. Includes observations from previous eider survey strata only (Fig. 2). Expanded indices for selected ducks were calculated using visibility correction factors (VCF) developed on the Yukon Kuskokwim Delta for tundra habitats (Conant et al. 1991).

Species	Single	Pair	Flocked Birds	Indicated Total	Density birds/km ²	Population Index	Population 95%CI	VCF	Expanded Pop. Index	%CV
Yellow-billed loon	40	16	0	72 ¹	0.046	1,405	914-1,896	NA		17.8
Pacific Loon	310	522	29	1383 ¹	1.001	30,507	27,517-33,497	NA		5.0
Red-throated loon	40	47	0	134 ¹	0.093	2,846	2,085-3,607	NA		13.6
Jaeger spp. ³	172	23	16	234 ¹	0.181	5,502	3,721-7,283	NA		16.5
Glaucous gull	420	121	262	924 ¹	0.635	19,345	14,661-24,029	NA		12.4
Sabine's gull	162	100	177	539 ¹	0.332	10,113	7,947-12,279	NA		10.9
Arctic tern	345	148	77	718 ¹	0.494	15,040	12,634-17,446	NA		8.2
Red-breasted merganser	5	10	5	35 ²	0.028	858	227-1,489	1.27	1,090	37.5
Mallard	4	0	0	8 ²	0.012	359	8-871	4.01	1,440	72.8
Am. wigeon	0	0	0	0 ²				3.84	0	
Am. Green-winged teal	3	0	0	6 ²	0.005	145	6-347	8.36	1,212	71.1
Northern pintail	688	78	737	2269 ²	1.452	44,232	34,770-53,694	3.05	134,908	10.9
Northern shoveler	1	5	0	12 ²	0.008	240	50-430	3.79	910	40.4
Greater scaup	79	77	88	321 ¹	0.246	7,488	4,521-10,455	1.93	14,452	20.2
Long-tailed duck	268	232	149	1149 ²	0.804	24,480	20,840-28,120	1.87	45,778	7.6
Spectacled eider	64	47	0	222 ²	0.154	4,677	3,368-5,986	NA		14.3
Common eider	3	3	0	12 ²	0.01	293	12-670	NA		65.7
King eider	213	207	19	859 ²	0.581	17,685	14,178-21,192	NA		10.1
Steller's eider	4	3	0	14 ²	0.011	337	14-829	NA		74.4
Black scoter	1	1	0	4 ²	0.003	97	4-233	1.17	113	71.8
White-winged scoter	2	5	0	14 ²	0.02	596	482-710	1.17	697	9.8
Snow goose	3	99	2486	2687 ¹	2.104	64,110	NA	NA		87.4
Gr. White-fronted goose	337	1626	4264	8190 ²	5.332	162,441	141,035-183,847	NA		6.7
Canada goose	36	65	850	1052 ²	0.567	17,285	9,886-24,684	NA		21.8
Black brant	41	29	511	651 ²	0.333	10,138	6,889-13,387	NA		16.3
Tundra swan	218	106	37	467 ¹	0.336	10,231	8,914-11,548	NA		6.6
Sandhill crane	2	0	0	2 ¹	0.001	36	2-83	NA		65.6
Unid. Shorebird ⁴	803	389	484	2065 ¹	1.477	44,994	39,214-50,774	NA		6.6
Common raven	1	0	0	1 ¹	<0.001	14	1-37	NA		85.3
Short-eared owl	5	0	0	5 ¹	0.004	120	5-241	NA		51.5
Snowy owl	66	3	0	72 ¹	0.053	1,602	793-2,411	NA		25.8
Golden eagle	4	0	0	4 ¹	0.003	96	21-171	NA		39.8

1. singles+(2*pairs)+flocked 2. 2*(singles+pairs)+flocked 3. *Stercorarius longicaudus*, *S. parasiticus*, *S. pomarinus* 4. *Charadrius sp.*, *Pluvialis spp.*, *Calidris spp.*, *Arenaria sp.*, *Numenius sp.*, *Limnodromus sp.* et al.

Table 4. Combined observations by starboard and port observers on aerial survey transects, arctic coastal plain, Alaska, June 2007, with observable population indices. Includes observations from all strata (Fig. 1). Expanded indices for selected ducks were calculated using visibility correction factors (VCF) developed on the Yukon Kuskokwim Delta for tundra habitats (Conant et al. 1991).

Species	Single	Pair	Flocked Birds	Indicated Total	Density birds/km ²	Population Index	Population 95%CI	VCF	Expanded Pop. Index	%CV
Yellow-billed loon	45	16	0	77 ¹	0.03	1,702	1,146-2,258	NA		16.7
Pacific Loon	357	606	29	1598 ¹	0.751	43,053	37,834-48,272	NA		6.2
Red-throated loon	45	51	4	151 ¹	0.064	3,667	2,660-4,674	NA		14.0
Jaeger spp. ³	246	30	16	322 ¹	0.193	11,088	9,033-13,143	NA		9.5
Glaucous gull	473	133	262	1001 ¹	0.433	24,826	20,040-29,612	NA		9.8
Sabine's gull	180	108	177	573 ¹	0.202	11,590	9,071-14,109	NA		11.1
Arctic tern	439	172	101	884 ¹	0.43	24,646	21,392-27,900	NA		6.7
Red-breasted merganser	7	13	5	45 ²	0.025	1,435	252-2,618	1.27	1,822	42.1
Mallard	4	1	4	14 ²	0.014	801	14-1,599	4.01	3,212	50.8
Am. wigeon	0	1	0	2 ²	<0.001	23	2-56	3.84	88	72.1
Am. Green-winged teal	5	1	0	12 ²	0.01	555	200-910	8.36	4,640	32.7
Northern pintail	782	95	754	2508 ²	1.061	60,830	50,223-71,437	3.05	185,532	8.9
Northern shoveler	1	5	0	12 ²	0.004	240	50-430	3.79	910	40.4
Greater scaup	130	147	88	512 ¹	0.341	19,559	15,015-24,103	1.93	37,749	11.9
Long-tailed duck	321	279	149	1349 ²	0.659	37,782	32,835-42,729	1.87	70,652	6.7
Spectacled eider	67	49	0	232 ²	0.092	5,288	3,864-6,712	NA		13.7
Common eider	3	4	0	14 ²	0.008	440	14-908	NA		54.3
King eider	226	222	19	915 ²	0.362	20,783	16,990-24,576	NA		9.3
Steller's eider	4	3	0	14 ²	0.006	337	14-829	NA		74.4
Black scoter	1	1	0	4 ²	0.002	97	4-233	1.17	113	71.8
White-winged scoter	3	24	0	54 ²	0.06	3,437	1,161-5,713	1.17	4,021	33.8
Snow goose	3	99	2486	2687 ¹	1.118	64,110	NA	NA		87.4
Gr. White-fronted goose	370	1745	4897	9127 ²	3.958	226,952	199,488-254,416	NA		6.2
Canada goose	49	81	954	1214 ²	0.494	28,346	17,296-39,396	NA		19.9
Black brant	41	29	511	651 ²	0.177	10,138	6,889-13,387	NA		16.3
Tundra swan	240	123	40	526 ¹	0.234	13,444	11,822-15,066	NA		6.2
Sandhill crane	3	0	0	3 ¹	0.002	110	3-282	NA		79.6
Unid. Shorebird ⁴	944	439	547	2369 ¹	1.075	61,662	53056-70268	NA		7.1
Common raven	4	0	0	4 ¹	0.002	252	14-490	NA		48.2
Short-eared owl	5	0	0	5 ¹	0.002	120	5-241	NA		51.5
Snowy owl	67	3	0	73 ¹	0.03	1,711	887-2,535	NA		39.2
Golden eagle	6	0	0	6 ¹	0.005	262	14-510	NA		48.2

1. singles+(2*pairs)+flocked 2. 2*(singles+pairs)+flocked 3. *Stercorarius longicaudus*, *S. parasiticus*, *S. pomarinus* 4. *Charadrius sp.*, *Pluvialis spp.*, *Calidris spp.*, *Arenaria sp.*, *Numenius sp.*, *Limnodromus sp.* et al.

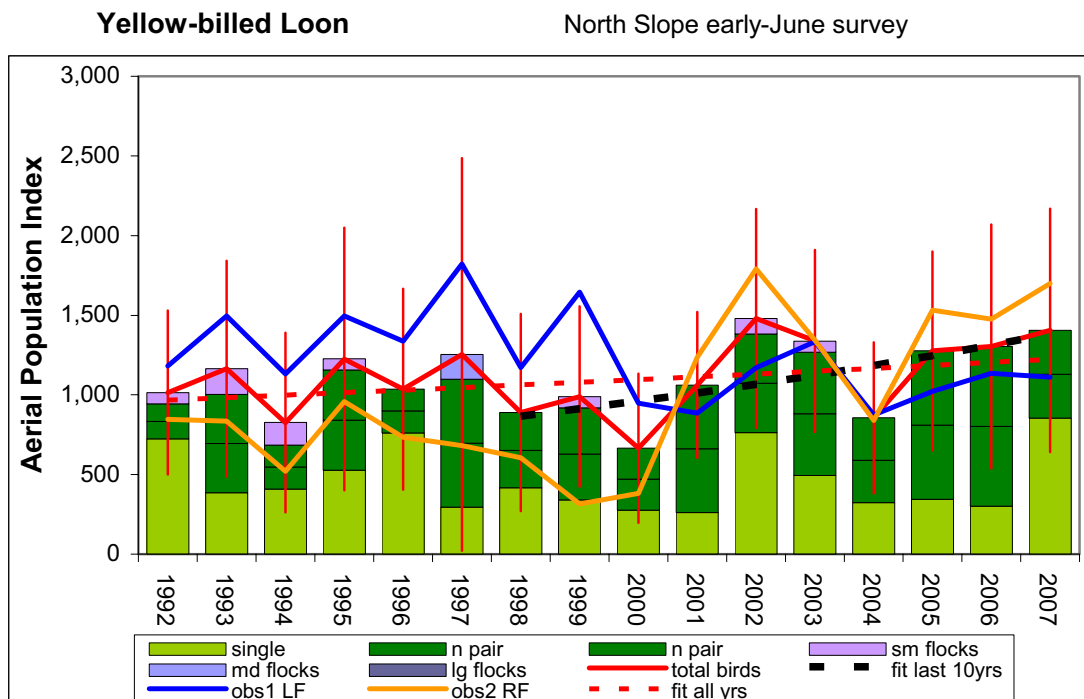
Table 5. Mean population indices, population growth rates, and years to detect a population trend equivalent to a 50 percent growth or decline in 20 years, for observations of selected bird species in early to mid-June 1992-2007 sampling Arctic Coastal Plain wetlands in Alaska. Variance estimates used were based on within-year sampling error among transects as stratified by 10 physiographic regions (Eider Strata). Significant growth rates are colored green for positive trend, red for negative.

Species	Measure	Years	n years	Mean pop. Index	Log-linear slope	Mean pop. growth rate	Pop. Growth rate 90% CI	Avg. sampling error coef. of variation	Years to detect a slope of 0.0341	Mean pop. growth rate last 10 years	Pop. GR last 10 years 90% CI
Yellow-billed loon	S + 2*Pr + Fl	1992-2007	16	1,107	0.016	1.016	0.996 - 1.036	0.228	15	1.056	1.014-1.099
Pacific Loon	S + 2*Pr + Fl	1992-2007	16	20,787	0.008	1.008	0.989 - 1.026	0.071	7	1.039	1.002-1.077
Red-throated loon	S + 2*Pr + Fl	1992-2007	16	2,611	-0.054	0.947	0.916 - 0.980	0.150	12	1.041	0.980-1.105
Jaeger spp.	S + 2*Pr + Fl	1992-2007	16	4,154	0.012	1.012	0.970 - 1.056	0.116	10	1.033	0.947-1.126
Glaucous gull	S + 2*Pr + Fl	1992-2007	16	12,414	0.007	1.007	0.984 - 1.031	0.155	12	1.031	0.981-1.083
Sabine's gull	S + 2*Pr + Fl	1992-2007	16	6,881	0.015	1.015	0.986 - 1.046	0.137	11	1.098	1.039-1.159
Arctic tern	S + 2*Pr + Fl	1992-2007	16	10,363	0.039	1.040	1.025 - 1.054	0.113	9	1.026	0.990-1.063
Red-breasted merganser	2 * (S + Pr) + Fl	1992-2007	16	468	0.108	1.114	1.057 - 1.175	0.404	22	1.137	1.083-1.193
Mallard	2 * (S + Pr) + Fl	1992-2007	16	212	-0.031	0.970	0.865 - 1.087	0.640	30	0.903	0.702-1.161
Am. wigeon	2 * (S + Pr) + Fl	1992-2007	16	364	-0.051	0.951	0.860 - 1.051	0.679	31	0.813	0.680-0.971
Am. Green-winged teal	2 * (S + Pr) + Fl	1992-2007	16	305	-0.138	0.871	0.785 - 0.965	0.506	25	1.022	0.839-1.244
Northern pintail	2 * (S + Pr) + Fl	1992-2007	16	49,019	-0.020	0.980	0.944-1.019	0.101	9	0.912	0.869-0.956
Northern shoveler	2 * (S + Pr) + Fl	1992-2007	16	211	0.024	1.024	0.901-1.165	0.549	27	0.857	0.661-1.111
Greater scaup	S + 2*Pr + Fl	1992-2007	16	4,227	0.063	1.065	1.039-1.092	0.180	13	1.089	1.031-1.150
Long-tailed duck	2 * (S + Pr) + Fl	1992-2007	16	30,408	-0.021	0.980	0.963-0.997	0.070	7	0.962	0.924-1.002
Spectacled eider	2 * (S + Pr) + Fl	1993-2007	15	6,664	-0.014	0.987	0.969-1.005	0.110	9	0.971	0.942-1.001
Common eider	2 * (S + Pr) + Fl	1992-2007	16	393	-0.014	0.987	0.903-1.078	0.785	34	1.077	0.889-1.303
King eider	2 * (S + Pr) + Fl	1993-2007	15	13,269	0.022	1.022	1.009-1.036	0.095	8	1.030	1.006-1.054
Steller's eider	2 * (S + Pr) + Fl	1992-2007	16	172	0.058	1.060	0.946-1.188	0.734	32	1.151	0.904-1.466
Black scoter	2 * (S + Pr) + Fl	1992-2007	16	119	-0.066	0.936	0.845-1.037	0.732	32	1.126	1.010-1.256
White-winged scoter	2 * (S + Pr) + Fl	1992-2007	16	349	0.083	1.086	1.006-1.173	0.591	28	1.042	0.969-1.121
Snow goose	S + 2*Pr + Fl	1992-2007	16	6,714	0.182	1.199	1.064-1.351	0.572	28	1.260	0.965-1.646
Gr. White-fronted goose	2 * (S + Pr) + Fl	1992-2007	16	79,725	0.040	1.041	1.013-1.070	0.077	7	1.072	1.020-1.126
Canada goose	2 * (S + Pr) + Fl	1993-2007	15	8,067	0.005	1.005	0.964-1.049	0.282	17	1.042	0.959-1.131
Black brant	2 * (S + Pr) + Fl	1992-2007	16	6,580	0.112	1.119	1.086-1.153	0.255	16	1.141	1.086-1.199
Tundra swan	S + 2*Pr + Fl	1992-2007	16	6,310	0.027	1.027	1.008-1.046	0.114	9	1.038	1.012-1.065
Sandhill crane	S + 2*Pr + Fl	1992-2007	16	123	0.039	1.039	0.974-1.108	0.651	30	0.956	0.843-1.084
Unid. Shorebird	S + 2*Pr + Fl	1997-2007	11	43,583	-0.027	0.974	0.937-1.012	0.086	8	0.960	0.919-1.003
Common raven	S + 2*Pr + Fl	1992-2007	16	57	-0.028	0.972	0.908-1.041	0.669	31	0.922	0.811-1.049
Short-eared owl	S + 2*Pr + Fl	1992-2007	16	85	0.046	1.047	0.963-1.140	0.494	25	1.003	0.831-1.210
Snowy owl	S + 2*Pr + Fl	1992-2007	16	892	-0.009	0.991	0.884-1.111	0.357	20	1.174	0.936-1.473
Golden eagle	S + 2*Pr + Fl	1992-2007	16	45	0.024	1.024	0.963-1.090	0.811	35	1.104	0.982-1.241

Table 6. Breeding population indices, historic Standard ACP Survey of Alaska (2006 and 1986-2005 means, Mallek et al. 2007), and 2007 ACP Survey. Duck Indices are adjusted using the standard Alaska-Yukon visibility correction factors (Conant et al. 1991).

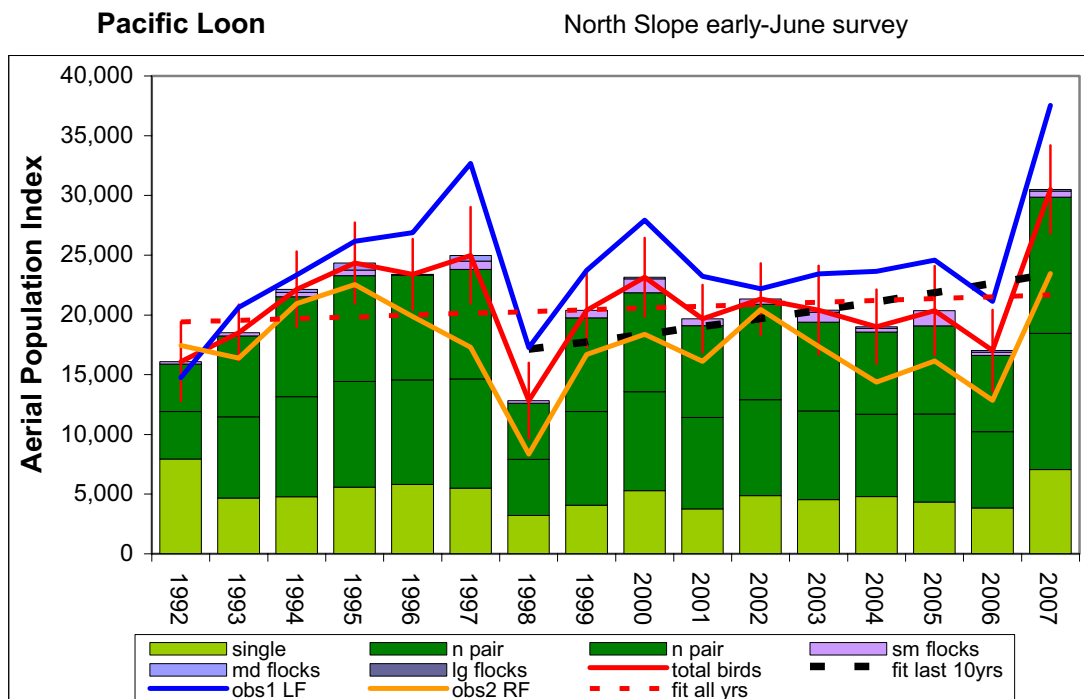
Species	VCF	ACP Survey ¹		All ACP strata 2007 (SE)
		2006 (SE)	mean 1986-2005	
Yellow-billed loon	1.00	1,676 (432)	2,833	1,702 (284)
Pacific Loon	1.00	43,053 (2,281)	29,091	26,783 (2,663)
Red-throated loon	1.00	5,142 (863)	3,145	3,667 (514)
Jaeger spp. ³	1.00	13,076 (1,048)	6,903	11,088 (1,048)
Glaucous gull	1.00	18,717 (3,514)	17,112	24,826 (2,442)
Sabine's gull	1.00	16,531 (3,575)	11,574	11,590 (1,285)
Arctic tern	1.00	24,329 (3,699)	23,505	24,646 (1,660)
Red-breasted merganser	1.27	3,835 (1,369)	2,265	1,822 (767)
Mallard	4.01	0	1,940	3,212 (1,632)
Am. wigeon	3.84	3,464 (2,163)	4,156	88 (65)
Am. Green-winged teal	8.36	2,357 (1,086)	3,253	4,640 (181)
Northern pintail	3.05	150,161 (19,511)	224,011	185,532 (16,507)
Northern shoveler	3.79	0	1,036	910 (368)
Greater scaup	1.93	23,890 (4,276)	33,163	37,749 (4,474)
Long-tailed duck	1.87	89,403 (14,870)	107,923	70,652 (4,720)
Spectacled eider	1.00	385 (185)	631	5,288 (727)
Common eider	1.00	279 (185)	449	440 (239)
King eider	1.00	5,932 (1,171)	3,902	20,783 (1,935)
Steller's eider	1.00	0	780	337 (251)
Black scoter	1.17	901 (437)	NA	113 (64)
White-winged scoter	1.17	5,179 (1,371)	NA	4,021 (1,161)
All scoters	1.17	9,265	10,437	4,134
Snow goose	1.00	1,046 (555)	3,124	64,110 (56,016)
Gr. White-fronted goose	1.00	113,932 (9,000)	124,465	226,952 (14,012)
Canada goose	1.00	17,892 (10,048)	18,330	28,346 (5,638)
Black brant	1.00	6,042 (1,479)	9,980	10,138 (1,657)
Tundra swan	1.00	10,174 (863)	9,961	13,444 (828)
Sandhill crane	1.00	NA	NA	110 (88)
Common raven	1.00	NA	NA	252 (122)
Short-eared owl	1.00	NA	NA	120 (62)
Snowy owl	1.00	2,465 (308)	1,157	1,711 (926)
Golden eagle	1.00	380 (185)	428	262 (126)

1. Mallek et al. 2006)



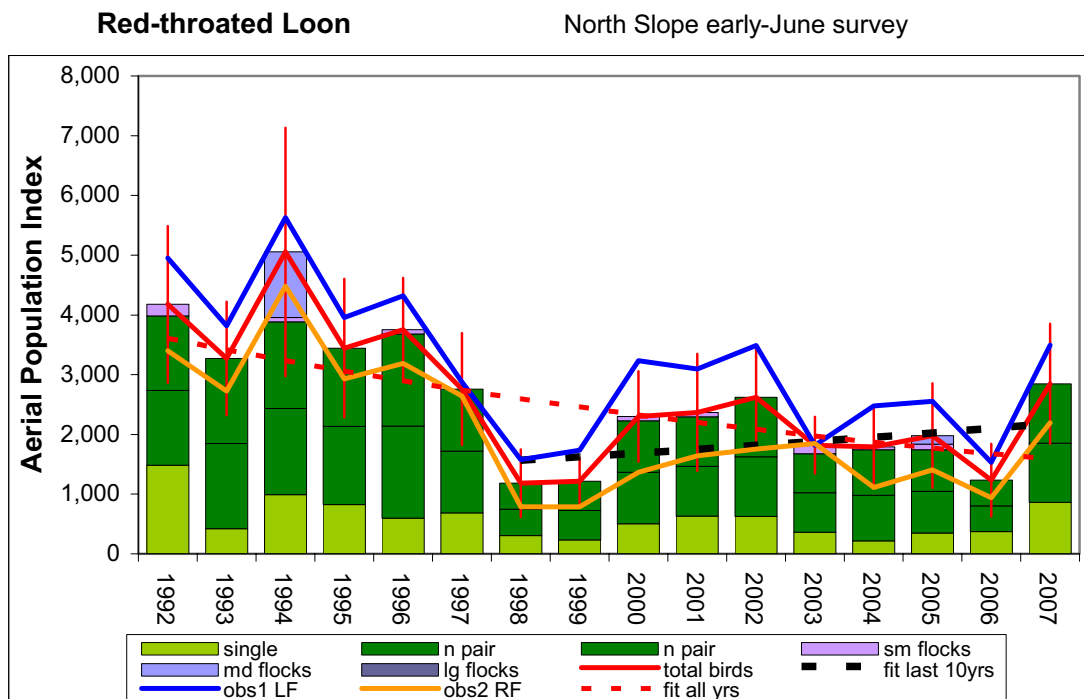
anls (nse 10 strata =30,465 km ²)						Aerial index: Total birds		YBLO	
year	sg	2*npr	sm flk	md flk	lg flk	Index	StdErr		
1992	725	219	71	0	0	1015	179	n yrs =	16
1993	386	617	162	0	0	1165	267	mean =	1112
1994	408	277	141	0	0	826	190	std dev =	231
1995	527	628	70	0	0	1226	308	ln linear slope =	0.0157
1996	761	275	0	0	0	1036	191	SE slope =	0.0117
1997	297	801	0	157	0	1254	573	Growth Rate =	1.016
1998	416	474	0	0	0	890	200	low 90%ci GR =	0.996
1999	340	579	70	0	0	989	229	high 90%ci GR =	1.035
2000	277	388	0	0	0	665	165	regression resid CV =	0.215
2001	262	800	0	0	0	1062	196	avg sampling err CV =	0.224
2002	762	620	97	0	0	1479	231	<u>min yrs to detect -50%/20yr rate :</u>	
2003	495	773	71	0	0	1339	236	w/ regression resid CV =	14.3
2004	323	533	0	0	0	856	170	w/ sample error CV =	14.7
2005	344	932	0	0	0	1277	253	<u>most recent 10 years :</u>	
2006	302	1002	0	0	0	1304	337	Growth Rate =	1.053
2007	854	551	0	0	0	1405	251	low 90%ci GR =	1.012
								high 90%ci GR =	1.096

Figure 6. Population trend for Yellow-billed Loons (*Gavia adamsii*) observed on aerial survey transects sampling 30,465 km² (eider strata only) of wetland tundra on the North Slope of Alaska. The total birds observed population index is the sum of birds observed as singles, birds in pairs, and all birds in flocks, indicated by column divisions from bottom to top. Vertical lines indicate 95% confidence intervals based on sampling error calculated among transects. Stratification included 10 physiographic regions. Average annual growth rate was calculated by log-linear regression. Calculation of power used alpha = 0.10, beta = 0.20, and a coefficient of variation based on either regression residuals or averaged annual sampling error. The power to detect trends can be compared across species using the estimated minimum years necessary to detect a slope of -0.0341, a 50% decline in 20 years.



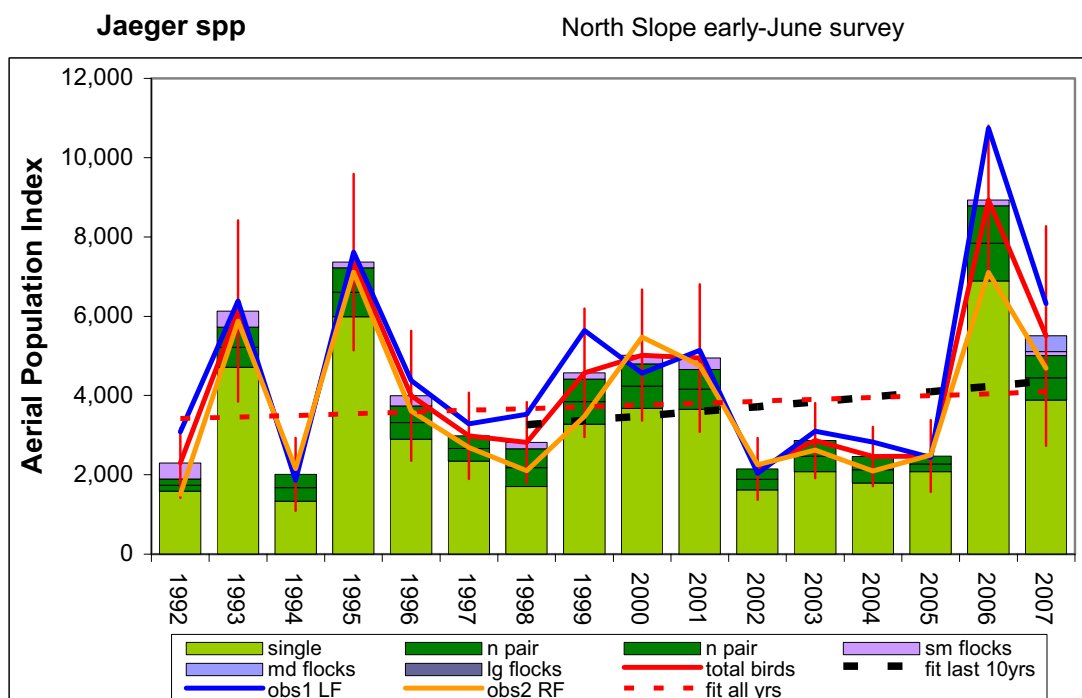
anls (nse 10 strata =30,465 km2)						Aerial index: Total birds		PALO	
year	sg	2*npr	sm flk	md flk	lg flk	Index	StdErr		
1992	7931	7944	227	0	0	16103	1174	n yrs =	16
1993	4669	13592	251	0	0	18512	958	mean =	20884
1994	4773	16753	354	266	0	22146	1329	std dev =	4071
1995	5592	17703	467	584	0	24347	1438	ln linear slope =	0.0073
1996	5821	17495	71	0	0	23387	1193	SE slope =	0.0110
1997	5497	18298	696	490	0	24981	1848	Growth Rate =	1.007
1998	3220	9392	222	0	0	12833	1370	low 90%ci GR =	0.989
1999	4070	15690	625	0	0	20385	1386	high 90%ci GR =	1.026
2000	5299	16556	1161	137	0	23152	1364	regression resid CV =	0.203
2001	3767	15326	581	0	0	19675	1330	avg sampling err CV =	0.069
2002	4880	16020	431	0	0	21330	1250	<u>min yrs to detect -50%/20yr rate :</u>	
2003	4536	14842	842	177	0	20397	1701	w/ regression resid CV =	13.8
2004	4802	13751	312	148	0	19014	1269	w/ sample error CV =	6.7
2005	4340	14728	1283	0	0	20351	1760	<u>most recent 10 years :</u>	
2006	3839	12783	250	147	0	17018	1532	Growth Rate =	1.035
2007	7051	22807	505	144	0	30507	1525	low 90%ci GR =	0.998
								high 90%ci GR =	1.074

Figure 7. Population trend for Pacific Loons (*Gavia pacifica*) observed on aerial survey transects sampling 30,465 km² (eider strata only) of wetland tundra on the North Slope of Alaska. The total birds observed population index is the sum of birds observed as singles, birds in pairs, and all birds in flocks, indicated by column divisions from bottom to top. Vertical lines indicate 95% confidence intervals based on sampling error calculated among transects. Stratification included 10 physiographic regions. Average annual growth rate was calculated by log-linear regression. Calculation of power used alpha = 0.10, beta = 0.20, and a coefficient of variation based on either regression residuals or averaged annual sampling error. The power to detect trends can be compared across species using the estimated minimum years necessary to detect a slope of -0.0341, a 50% decline in 20 years.



anls (nse 10 strata =30,465 km ²)						Aerial index: Total birds		RTLO	
year	sg	2*npr	sm flk	md flk	lg flk	Index	StdErr		
1992	1487	2495	196	0	0	4177	453	n yrs =	16
1993	421	2850	0	0	0	3271	434	mean =	2614
1994	993	2888	75	1099	0	5054	990	std dev =	1115
1995	827	2617	0	0	0	3445	476	ln linear slope =	-0.055
1996	596	3087	73	0	0	3756	390	SE slope =	0.0201
1997	683	2075	0	0	0	2758	415	Growth Rate =	0.947
1998	306	879	0	0	0	1185	251	low 90%ci GR =	0.916
1999	234	983	0	0	0	1216	176	high 90%ci GR =	0.979
2000	502	1727	69	0	0	2298	330	regression resid CV =	0.371
2001	634	1663	71	0	0	2367	387	avg sampling err CV =	0.153
2002	627	1994	0	0	0	2621	335		
2003	363	1315	140	0	0	1818	194	<u>min yrs to detect -50%/20yr rate :</u>	
2004	217	1528	49	0	0	1793	294	w/ regression resid CV =	20.6
2005	348	1398	94	141	0	1980	399	w/ sample error CV =	11.4
2006	374	862	0	0	0	1236	264	<u>most recent 10 years :</u>	
2007	860	1986	0	0	0	2846	388	Growth Rate =	1.037
								low 90%ci GR =	0.978
								high 90%ci GR =	1.100

Figure 8. Population trend for Red-throated Loons (*Gavia stellata*) observed on aerial survey transects sampling 30,465 km² (eider strata only) of wetland tundra on the North Slope of Alaska. The total birds observed population index is the sum of birds observed as singles, birds in pairs, and all birds in flocks, indicated by column divisions from bottom to top. Vertical lines indicate 95% confidence intervals based on sampling error calculated among transects. Stratification included 10 physiographic regions. Average annual growth rate was calculated by log-linear regression. Calculations of power used alpha with $p=0.10$, beta at $p=0.20$, and a coefficient of variation based on either regression residuals or averaged sampling error. The power to detect trends can be compared across species using the estimated minimum number of years necessary to detect a slope of -0.0341 , a 50% decline in 20 years.



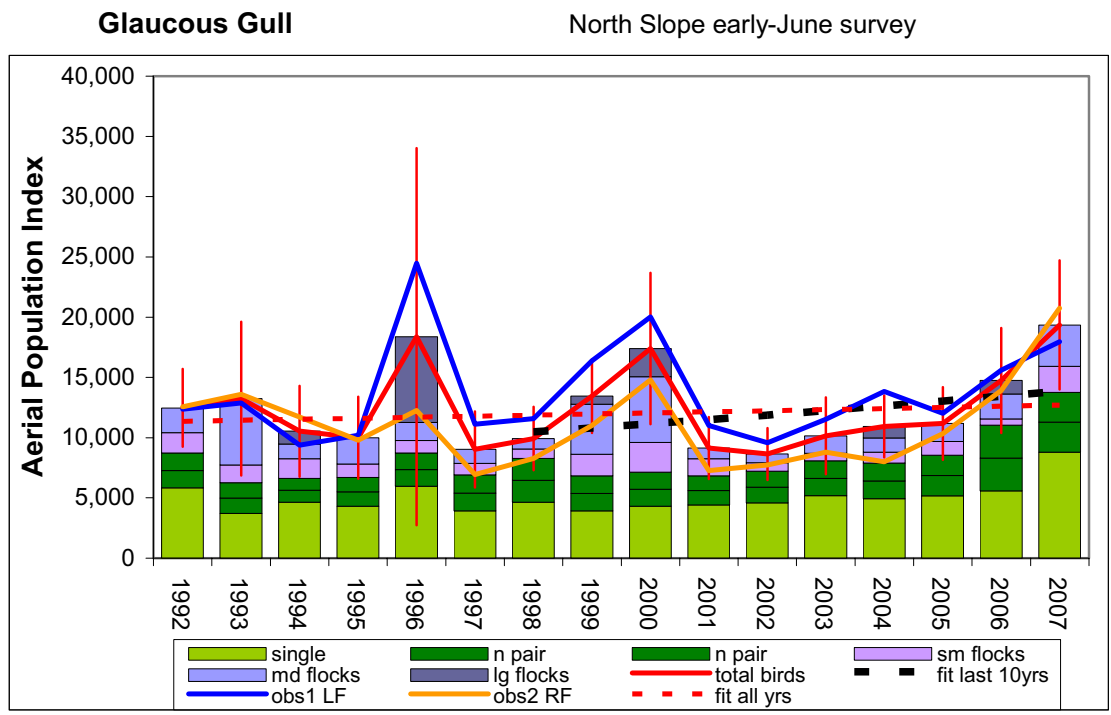
anls (nse 10 strata =30,465 km²)

year	Aerial index: Total birds					Index	StdErr
	sg	2*npr	sm flk	md flk	lg flk		
1992	1588	301	409	0	0	2298	297
1993	4713	1014	405	0	0	6131	706
1994	1335	671	0	0	0	2007	353
1995	5989	1232	144	0	0	7365	650
1996	2897	842	253	0	0	3992	485
1997	2346	638	0	0	0	2984	316
1998	1702	952	164	0	0	2817	384
1999	3276	1143	154	0	0	4572	477
2000	3673	1124	221	0	0	5018	526
2001	3655	1005	286	0	0	4946	604
2002	1622	525	0	0	0	2147	232
2003	2078	785	0	0	0	2863	300
2004	1793	666	0	0	0	2459	242
2005	2081	390	0	0	0	2471	278
2006	6893	1891	147	0	0	8930	589
2007	3886	1125	99	392	0	5502	909

JAEG

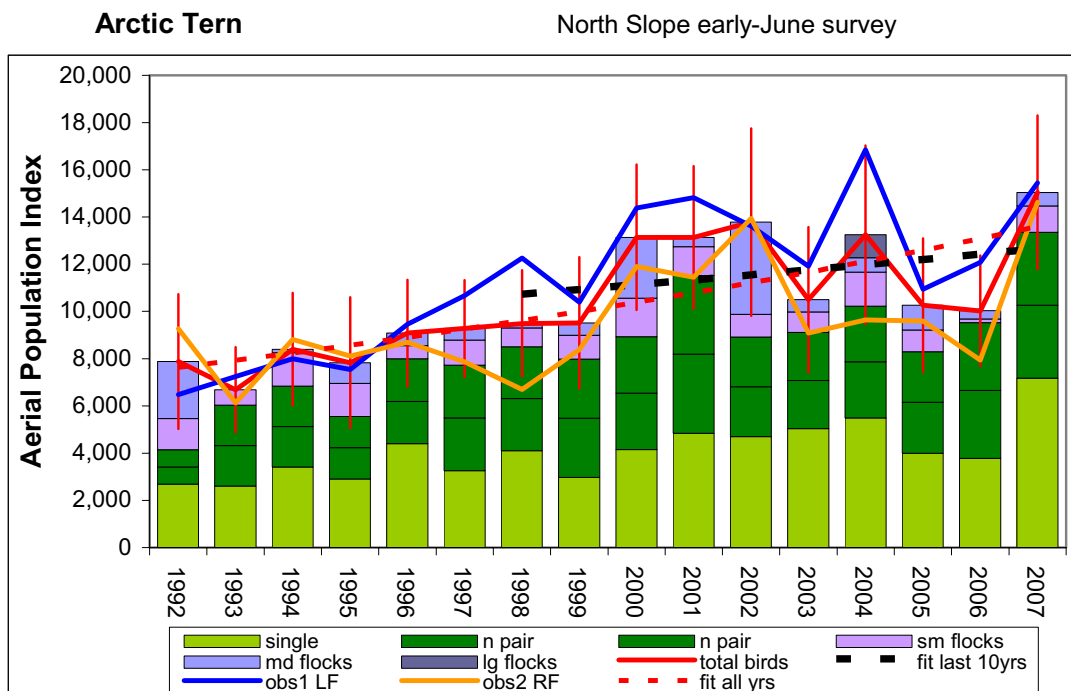
n yrs =	16
mean =	4156
std dev =	2050
In linear slope =	0.0121
SE slope =	0.0261
Growth Rate =	1.012
low 90%ci GR =	0.970
high 90%ci GR =	1.057
regression resid CV =	0.482
avg sampling err CV =	0.116
<u>min yrs to detect -50%/20yr rate :</u>	
w/ regression resid CV =	24.5
w/ sample error CV =	9.5
<u>most recent 10 years :</u>	
Growth Rate =	1.033
low 90%ci GR =	0.947
high 90%ci GR =	1.126

Figure 9. Population trend for jaeger species (*Stercorarius parasiticus*, *S. pomarinus*, *S. longicaudus*) observed on aerial survey transects sampling 30,465 km² (eider strata only) of wetland tundra on the North Slope of Alaska. The total birds observed population index is the sum of birds observed as singles, birds in pairs, and all birds in flocks, indicated by column divisions from bottom to top. Vertical lines indicate 95% confidence intervals based on sampling error calculated among transects. Stratification included 10 physiographic regions. Average annual growth rate was calculated by log-linear regression. Power calculations used alpha with $p=0.10$, beta at $p=0.20$, and a coefficient of variation based on either regression residuals or averaged sampling error. The power of the survey to detect trends can be compared across species using the estimated minimum number of years necessary to detect a slope of -0.0341 , a 50% decline in 20 years.



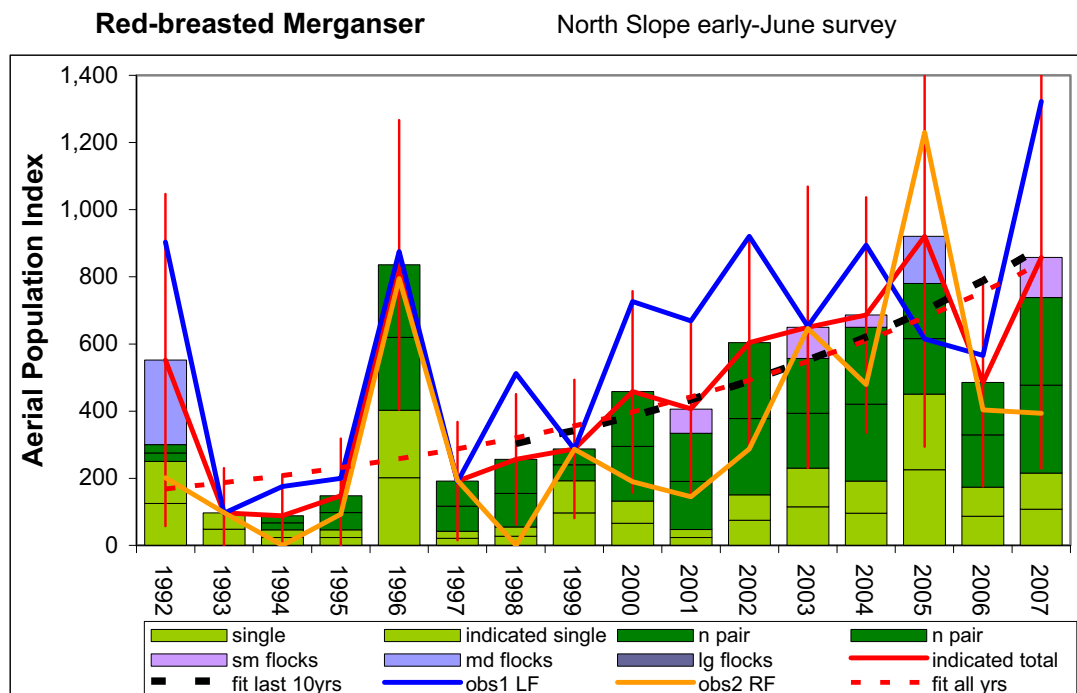
anls (nse 10 strata =30,465 km2)							Aerial index: Total birds		GLGU	
year	sg	2*npr	sm flk	md flk	lg flk	Index	StdErr			
1992	5840	2875	1704	2050	0	12469	1385	n yrs =	16	
1993	3724	2536	1489	5490	0	13238	3151	mean =	12407	
1994	4648	1964	1640	1223	1057	10532	1794	std dev =	3429	
1995	4300	2396	1119	2185	0	10000	1522	In linear slope =	0.0075	
1996	5959	2772	1034	1501	7107	18372	7868	SE slope =	0.0144	
1997	3919	2979	973	1158	0	9028	1289	Growth Rate =	1.007	
1998	4645	3636	786	859	0	9926	1097	low 90%ci GR =	0.984	
1999	3932	2900	1780	4168	656	13435	1343	high 90%ci GR =	1.032	
2000	4303	2832	2464	5454	2342	17394	3095	regression resid CV =	0.265	
2001	4423	2391	1429	886	0	9130	1124	avg sampling err CV =	0.153	
2002	4596	2615	706	732	0	8649	788			
2003	5182	2878	645	1449	0	10153	1325			
2004	4921	2971	898	1181	951	10921	1164	<u>min yrs to detect -50%/20yr rate :</u>		
2005	5162	3376	1134	1503	0	11175	1255	w/ regression resid CV =	16.5	
2006	5573	5465	505	2098	1102	14743	1976	w/ sample error CV =	11.4	
2007	8807	4945	2169	3424	0	19345	2390	<u>most recent 10 years :</u>		
								Growth Rate =	1.032	
								low 90%ci GR =	0.982	
								high 90%ci GR =	1.084	

Figure 10. Population trend for Glaucous Gulls (*Larus hyperboreus*) observed on aerial survey transects sampling 30,465 km² (eider strata only) of wetland tundra on the North Slope of Alaska. The total birds observed population index is the sum of birds observed as singles, birds in pairs, and all birds in flocks, indicated by column divisions from bottom to top. Vertical lines indicate 95% confidence intervals based on sampling error calculated among transects. Stratification included 10 physiographic regions. Average annual growth rate was calculated by log-linear regression. Power calculations used alpha with p=0.10, beta at p=0.20, and a coefficient of variation based on either regression residuals or averaged sampling error. The power of the survey to detect trends can be compared across species using the estimated minimum number of years necessary to detect a slope of -0.0341, a 50% decline in 20 years.



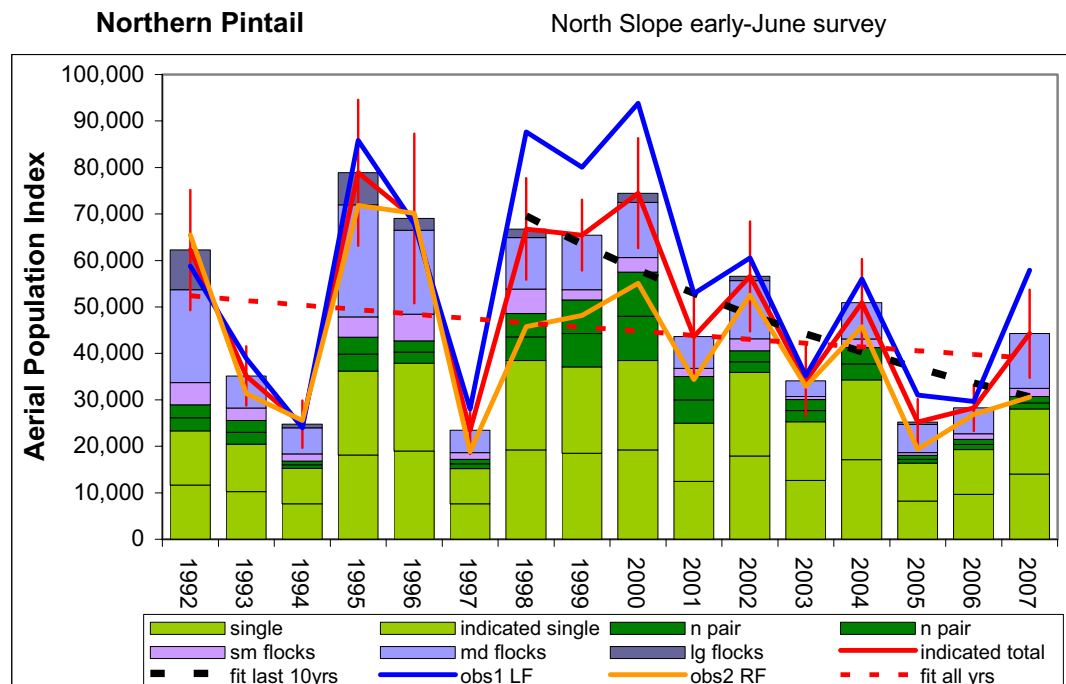
anls (nse 10 strata =30,465 km ²)						Aerial index: Total birds		ARTE	
year	sg	2*npr	sm flk	md flk	lg flk	Index	StdErr		
1992	2691	1449	1327	2411	0	7877	1340	n yrs =	16
1993	2605	3425	652	0	0	6682	692	mean =	10455
1994	3419	3417	1418	147	0	8400	933	std dev =	2471
1995	2905	2655	1393	879	0	7832	1186	In linear slope =	0.0385
1996	4398	3597	560	528	0	9083	906	SE slope =	0.0082
1997	3252	4464	1069	488	0	9274	891	Growth Rate =	1.039
1998	4098	4409	806	179	0	9491	838	low 90%ci GR =	1.025
1999	2969	5016	1007	515	0	9508	1230	high 90%ci GR =	1.053
2000	4151	4783	1635	2571	0	13141	1361	regression resid CV =	0.151
2001	4844	6685	1217	389	0	13135	1236	avg sampling err CV =	0.112
2002	4698	4221	956	3905	0	13778	1800		
2003	5033	4077	872	512	0	10493	1128	<u>min yrs to detect -50%/20yr rate :</u>	
2004	5491	4735	1441	617	964	13248	1509	w/ regression resid CV =	11.3
2005	3997	4301	917	1051	0	10266	1195	w/ sample error CV =	9.3
2006	3779	5752	147	348	0	10026	917	<u>most recent 10 years :</u>	
2007	7173	6186	1107	575	0	15040	1227	Growth Rate =	1.019
								low 90%ci GR =	0.987
								high 90%ci GR =	1.051

Figure 11. Population trend for Arctic Terns (*Sterna paradisaea*) observed on aerial survey transects sampling 30,465 km² (eider strata only) of wetland tundra on the North Slope of Alaska. The total birds observed population index is the sum of birds observed as singles, birds in pairs, and all birds in flocks, indicated by column divisions from bottom to top. Vertical lines indicate 95% confidence intervals based on sampling error calculated among transects. Stratification included 10 physiographic regions. Average annual growth rate was calculated by log-linear regression. Power calculations used alpha with $p=0.10$, beta at $p=0.20$, and a coefficient of variation based on either regression residuals or averaged sampling error. The power of the survey to detect trends can be compared across species using the estimated minimum number of years necessary to detect a slope of -0.0341 , a 50% decline in 20 years.



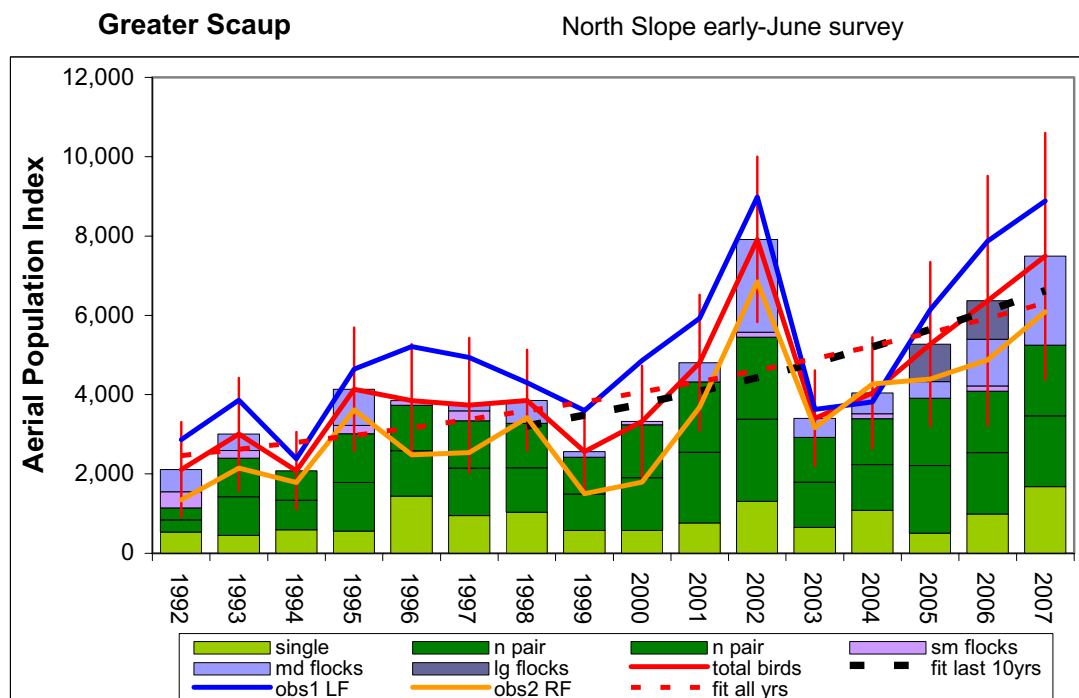
anls (nse 10 strata =30,465 km2)						Aerial index: Indicated total		RBME	
year	2*sg	2*npr	sm flk	md flk	lg flk	Index	StdErr		
1992	250	50	0	252	0	552	252	n yrs =	16
1993	97	0	0	0	0	97	68	mean =	470
1994	47	41	0	0	0	88	63	std dev =	276
1995	47	101	0	0	0	148	87	In linear slope =	0.1073
1996	403	433	0	0	0	836	220	SE slope =	0.0319
1997	42	149	0	0	0	192	90	Growth Rate =	1.113
1998	55	202	0	0	0	256	99	low 90%ci GR =	1.056
1999	193	95	0	0	0	287	105	high 90%ci GR =	1.173
2000	132	326	0	0	0	458	153	regression resid CV =	0.588
2001	47	287	72	0	0	407	132	avg sampling err CV =	0.406
2002	150	454	0	0	0	604	155		
2003	230	326	93	0	0	650	214	<u>min yrs to detect -50%/20yr rate :</u>	
2004	191	459	37	0	0	686	179	w/ regression resid CV =	28.0
2005	451	329	0	141	0	921	320	w/ sample error CV =	21.9
2006	174	312	0	0	0	485	158	<u>most recent 10 years :</u>	
2007	216	523	120	0	0	858	322	Growth Rate =	1.127
								low 90%ci GR =	1.077
								high 90%ci GR =	1.178

Figure 12. Population trend for Red-breasted Mergansers (*Mergus serrator*) observed on aerial survey transects sampling 30,465 km² (eider strata only) of wetland tundra on the North Slope of Alaska. The indicated total birds population index is the sum of birds observed as singles, an equal number of unseen but indicated single birds, birds in pairs, and all birds in flocks, indicated by column divisions from bottom to top. Vertical lines indicate 95% confidence intervals based on sampling error calculated among transects. Stratification included 10 physiographic regions. Average annual growth rate was calculated by log-linear regression. Power calculations used alpha with $p=0.10$, beta at $p=0.20$, and a coefficient of variation based on either regression residuals or averaged sampling error. The power of the survey to detect trends can be compared across species using the estimated minimum number of years necessary to detect a slope of -0.0341 , a 50% decline in 20 years.



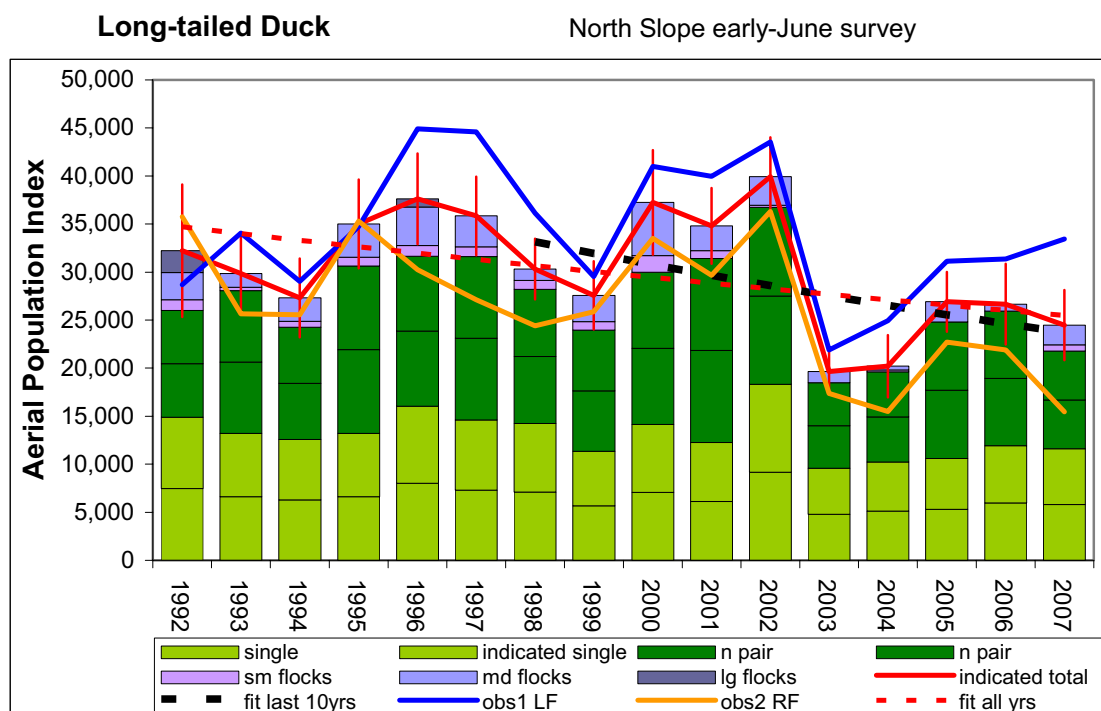
anls (nse 10 strata =30,465 km2)							Aerial index: Indicated total		NOPI	
year	2*sg	2*npr	sm flk	md flk	lg flk	Index	StdErr			
1992	23339	5630	4752	20018	8491	62230	6591		n yrs =	16
1993	20441	5126	2668	6905	0	35141	3261		mean =	48940
1994	15254	1573	1550	5590	802	24768	2589		std dev =	19088
1995	36195	7281	4396	24109	6892	78872	8012		ln linear slope =	-0.02
1996	37891	4794	5743	18034	2558	69020	9306		SE slope =	0.0232
1997	15217	1984	1439	4812	0	23452	2624		Growth Rate =	0.981
1998	38469	10126	5255	11094	1832	66775	5576		low 90%ci GR =	0.944
1999	37076	14400	2264	11702	0	65443	3896		high 90%ci GR =	1.019
2000	38434	19056	3134	11843	1999	74466	6031			
2001	24965	10029	1749	6882	0	43625	4392		regression resid CV =	0.428
2002	35915	4630	2602	12529	881	56557	6030		avg sampling err CV =	0.099
2003	25320	4725	643	3387	0	34075	3873			
2004	34272	6991	1804	7817	0	50885	4796		<u>min yrs to detect -50%/20yr rate :</u>	
2005	16381	1703	592	6047	481	25205	2544		w/ regression resid CV =	22.6
2006	19280	2265	1118	5627	0	28290	2551		w/ sample error CV =	8.6
2007	28009	2669	1758	11796	0	44232	4828		<u>most recent 10 years :</u>	
									Growth Rate =	0.913
									low 90%ci GR =	0.870
									high 90%ci GR =	0.957

Figure 13. Population trend for Northern Pintail (*Anas acuta*) observed on aerial survey transects sampling 30,465 km² (eider strata only) of wetland tundra on the North Slope of Alaska. The indicated total birds population index is the sum of birds observed as singles, an equal number of unseen but indicated single birds, birds in pairs, and all birds in flocks, indicated by column divisions from bottom to top. Vertical lines indicate 95% confidence intervals based on sampling error calculated among transects. Stratification included 10 physiographic regions. Average annual growth rate was calculated by log-linear regression. Power calculations used alpha with $p=0.10$, beta at $p=0.20$, and a coefficient of variation based on either regression residuals or averaged sampling error. The power of the survey to detect trends can be compared across species using the estimated minimum number of years necessary to detect a slope of -0.0341 , a 50% decline in 20 years.



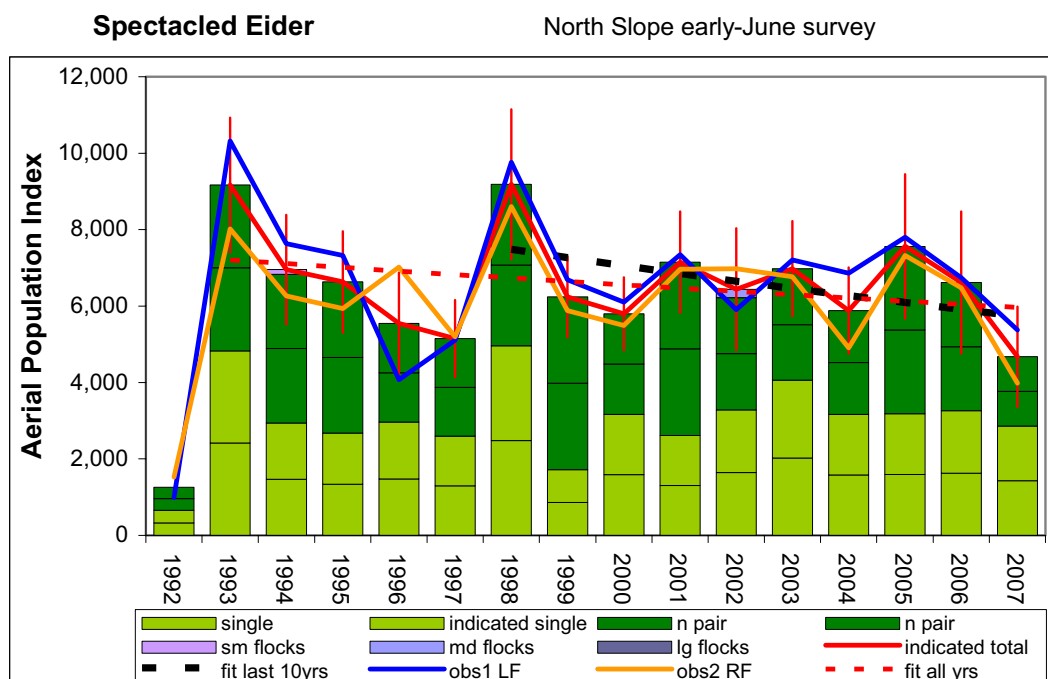
anls (nse 10 strata =30,465 km ²)						Aerial index: Total birds		SCAU	
year	sg	2*npr	sm flk	md flk	lg flk	Index	StdErr		
1992	539	607	400	563	0	2109	572	n yrs =	16
1993	455	1946	192	411	0	3004	636	mean =	4246
1994	594	1486	0	0	0	2080	366	std dev =	1744
1995	560	2453	209	912	0	4133	719	In linear slope =	0.0627
1996	1437	2292	120	0	0	3849	526	SE slope =	0.0147
1997	948	2396	245	145	0	3735	661	Growth Rate =	1.065
1998	1035	2240	0	582	0	3857	470	low 90%ci GR =	1.039
1999	576	1847	0	143	0	2565	452	high 90%ci GR =	1.091
2000	579	2659	87	0	0	3325	556	regression resid CV =	0.272
2001	766	3556	0	480	0	4802	784	avg sampling err CV =	0.178
2002	1306	4147	120	2342	0	7915	982	<u>min yrs to detect -50%/20yr rate :</u>	
2003	655	2266	0	483	0	3403	545	w/ regression resid CV =	16.7
2004	1079	2319	119	524	0	4041	611	w/ sample error CV =	12.6
2005	507	3404	0	421	937	5269	1043	<u>most recent 10 years :</u>	
2006	988	3103	125	1177	976	6370	1550	Growth Rate =	1.084
2007	1685	3567	0	2237	0	7488	1514	low 90%ci GR =	1.027
								high 90%ci GR =	1.144

Figure 14. Population trend for Greater Scaup (*Aythya marila*) observed on aerial survey transects sampling 30,465 km² (eider strata only) of wetland tundra on the North Slope of Alaska. The total birds observed population index is the sum of birds observed as singles, birds in pairs, and all birds in flocks, indicated by column divisions from bottom to top. Vertical lines indicate 95% confidence intervals based on sampling error calculated among transects. Stratification included 10 physiographic regions. Average annual growth rate was calculated by log-linear regression. Power calculations used alpha with $p=0.10$, beta at $p=0.20$, and a coefficient of variation based on either regression residuals or averaged sampling error. The power of the survey to detect trends can be compared across species using the estimated minimum number of years necessary to detect a slope of -0.0341 , a 50% decline in 20 years.



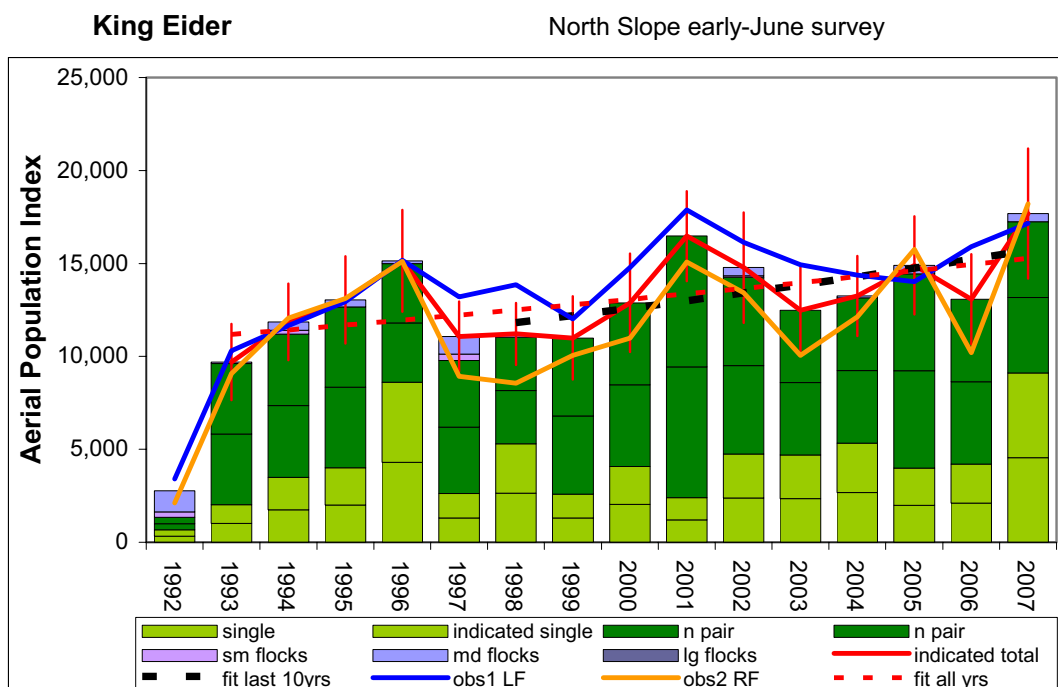
anls (nse 10 strata =30,465 km ²)						Aerial index: Indicated total		LTDU	
year	2*sg	2*npr	sm flk	md flk	lg flk	Index	StdErr		
1992	14896	11116	1123	2818	2268	32221	3513	n yrs =	16
1993	13208	14871	346	1432	0	29858	1989	mean =	30354
1994	12570	11684	623	2434	0	27312	2090	std dev =	6123
1995	13206	17440	913	3463	0	35021	2361	ln linear slope =	-0.021
1996	16046	15597	1099	4023	849	37614	2419	SE slope =	0.0106
1997	14607	17009	1021	3215	0	35853	2087	Growth Rate =	0.980
1998	14244	13963	942	1162	0	30310	1612	low 90%ci GR =	0.963
1999	11329	12640	872	2742	0	27584	1811	high 90%ci GR =	0.997
2000	14154	15833	1737	5529	0	37252	2773	regression resid CV =	0.196
2001	12270	19161	807	2572	0	34810	2016	avg sampling err CV =	0.069
2002	18317	18405	257	2953	0	39931	2097		
2003	9579	8894	0	1168	0	19642	1227		
2004	10230	9380	198	391	0	20199	1658	<u>min yrs to detect -50%/20yr rate :</u>	
2005	10594	14197	0	2122	0	26912	1583	w/ regression resid CV =	13.4
2006	11917	14036	0	716	0	26669	2150	w/ sample error CV =	6.7
2007	11597	10191	645	2046	0	24479	1857	<u>most recent 10 years :</u>	
								Growth Rate =	0.964
								low 90%ci GR =	0.925
								high 90%ci GR =	1.003

Figure 15. Population trend for Long-tailed Duck (*Clangula hyemalis*) observed on aerial survey transects sampling 30,465 km² (eider strata only) of wetland tundra on the North Slope of Alaska. The indicated total birds population index is the sum of birds observed as singles, an equal number of unseen but indicated single birds, birds in pairs, and all birds in flocks, indicated by column divisions from bottom to top. Average annual growth rate was calculated by log-linear regression. Power calculations used alpha with $p=0.10$, beta at $p=0.20$, and a coefficient of variation based on either regression residuals or averaged sampling error. The power of the survey to detect trends can be compared across species using the estimated minimum number of years necessary to detect a slope of -0.0341 , a 50% decline in 20 years.



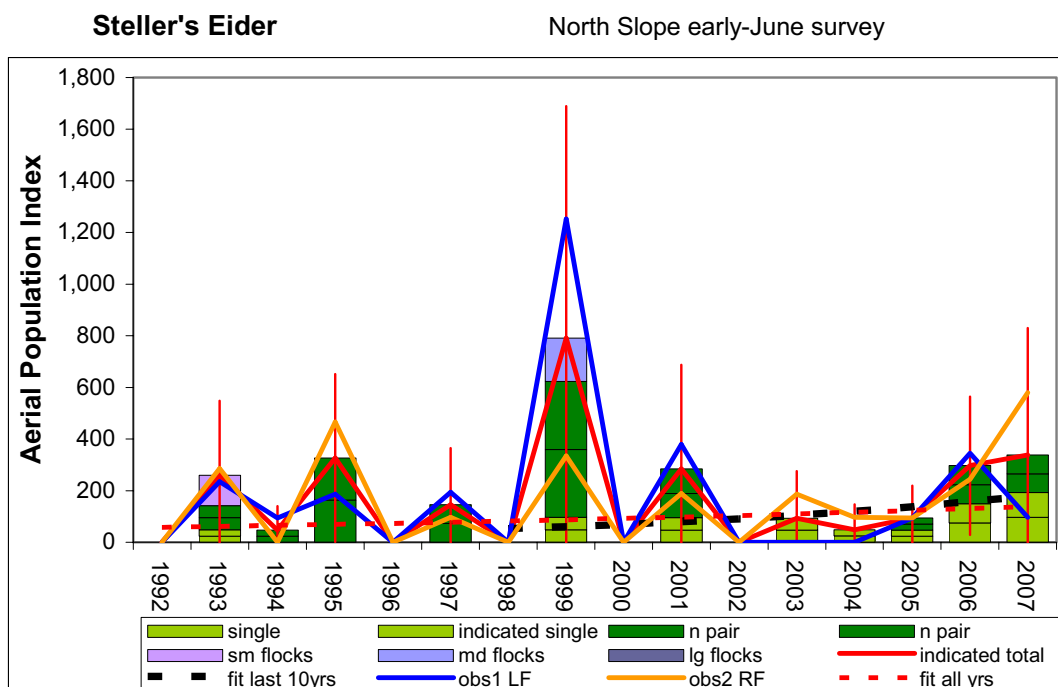
anls (nse 10 strata =30,465 km2)						Aerial index: Indicated total		SPEI	
year	2*sg	2*npr	sm flk	md flk	lg flk	Index	StdErr		
1992	657	602	0	0	0			n yrs =	15
1993	4828	4339	0	0	0	9167	900	mean =	6664
1994	2945	3885	122	0	0	6951	733	std dev =	1280
1995	2679	3951	0	0	0	6630	677	ln linear slope =	-0.013
1996	2964	2580	0	0	0	5544	680	SE slope =	0.0110
1997	2594	2553	0	0	0	5148	515	Growth Rate =	0.987
1998	4963	4223	0	0	0	9186	1001	low 90%ci GR =	0.969
1999	1723	4517	0	0	0	6240	541	high 90%ci GR =	1.005
2000	3170	2628	0	0	0	5798	487	regression resid CV =	0.184
2001	2611	4537	0	0	0	7148	675	avg sampling err CV =	0.109
2002	3284	2938	0	216	0	6439	812	min yrs to detect -50%/20yr rate :	
2003	4058	2918	0	0	0	6976	635	w/ regression resid CV =	12.9
2004	3165	2716	0	0	0	5881	574	w/ sample error CV =	9.1
2005	3186	4374	0	0	0	7561	964	most recent 10 years :	
2006	3259	3356	0	0	0	6615	947	Growth Rate =	0.971
2007	2864	1813	0	0	0	4676	668	low 90%ci GR =	0.942
								high 90%ci GR =	1.001

Figure 16. Population trend for Spectacled Eider (*Somateria fischeri*) observed on aerial survey transects sampling 30,465 km² (eider strata only) of wetland tundra on the North Slope of Alaska. The indicated total birds population index is the sum of birds observed as singles, an equal number of unseen but indicated single birds, birds in pairs, and all birds in flocks, indicated by column divisions from bottom to top. Vertical lines indicate 95% confidence intervals based on sampling error calculated among transects. Stratification included 10 physiographic regions. Average annual growth rate was calculated by log-linear regression. Power calculations used alpha with $p=0.10$, beta at $p=0.20$, and a coefficient of variation based on either regression residuals or averaged sampling error. The power of the survey to detect trends can be compared across species using the estimated minimum number of years necessary to detect a slope of -0.0341, a 50% decline in 20 years. A low index in 1992 was excluded from trend calculation because the survey was flown too late in June.



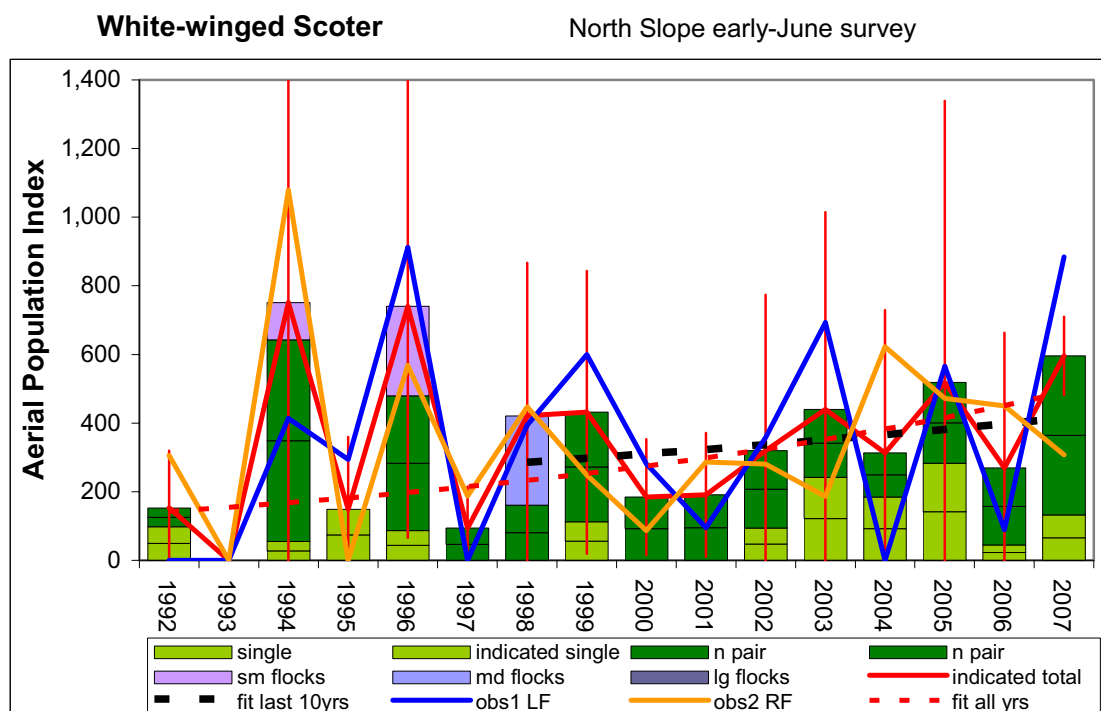
anls (nse 10 strata =30,465 km ²)						Aerial index: Indicated total		KIEI	
year	2*sg	2*npr	sm flk	md flk	lg flk	Index	StdErr		
1992	661	677	290	1142	0			n yrs =	15
1993	2029	7587	75	0	0	9692	1046	mean =	13234
1994	3495	7695	212	451	0	11853	1052	std dev =	2205
1995	4013	8650	0	373	0	13037	1197	ln linear slope =	0.0223
1996	8598	6400	0	146	0	15143	1395	SE slope =	0.0082
1997	2618	7163	333	958	0	11072	962	Growth Rate =	1.023
1998	5295	5746	169	0	0	11211	852	low 90%ci GR =	1.009
1999	2597	8389	0	0	0	10987	1143	high 90%ci GR =	1.036
2000	4079	8803	0	0	0	12882	1349		
2001	2403	14066	0	0	0	16469	1236	regression resid CV =	0.136
2002	4746	9507	94	432	0	14780	1518	avg sampling err CV =	0.093
2003	4689	7796	0	0	0	12485	1252		
2004	5336	7820	0	95	0	13251	1094	<u>min yrs to detect -50%/20yr rate :</u>	
2005	3988	10458	0	445	0	14891	1348	w/ regression resid CV =	10.6
2006	4206	8862	0	0	0	13068	1239	w/ sample error CV =	8.2
2007	9103	8132	0	450	0	17685	1789	<u>most recent 10 years :</u>	
								Growth Rate =	1.032
								low 90%ci GR =	1.008
								high 90%ci GR =	1.057

Figure 17. Population trend for King Eider (*Somateria spectabilis*) observed on aerial survey transects sampling 30,465 km² (eider strata only) of wetland tundra on the North Slope of Alaska. The indicated total birds population index is the sum of birds observed as singles, an equal number of unseen but indicated single birds, birds in pairs, and all birds in flocks, indicated by column divisions from bottom to top. Vertical lines indicate 95% confidence intervals based on sampling error calculated among transects. Stratification included 10 physiographic regions. Average annual growth rate was calculated by log-linear regression. Power calculations used alpha with $p=0.10$, beta at $p=0.20$, and a coefficient of variation based on either regression residuals or averaged sampling error. The power of the survey to detect trends can be compared across species using the estimated minimum number of years necessary to detect a slope of -0.0341 , a 50% decline in 20 years. A low index in 1992 was excluded from trend calculation because the survey was flown too late in June.



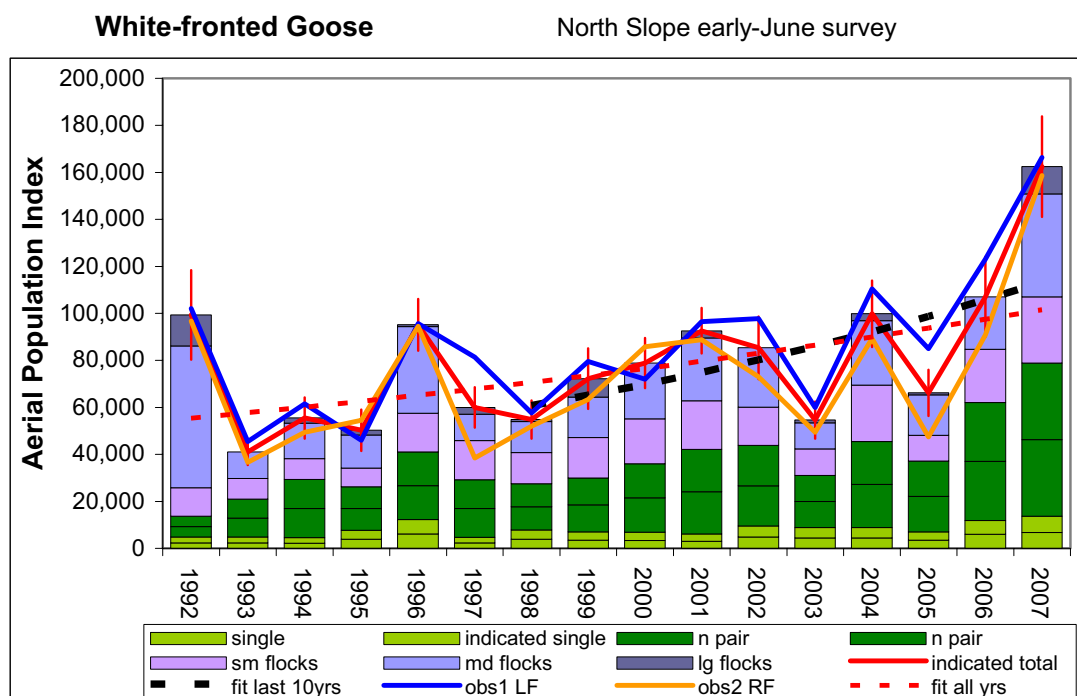
anls (nse 10 strata =30,465 km ²)						Aerial index: Indicated total		STEI	
year	2*sg	2*npr	sm flk	md flk	lg flk	Index	StdErr		
1992	0	0	0	0	0	20	0	n yrs =	16
1993	48	94	118	0	0	260	147	mean =	176
1994	0	47	0	0	0	47	47	std dev =	205
1995	0	327	0	0	0	326	166	ln linear slope =	0.0582
1996	0	0	0	0	0	20	0	SE slope =	0.0698
1997	0	145	0	0	0	145	112	Growth Rate =	1.060
1998	0	0	0	0	0	20	0	low 90%ci GR =	0.945
1999	96	527	0	168	0	791	458	high 90%ci GR =	1.189
2000	0	0	0	0	0	20	0		
2001	95	189	0	0	0	284	206	regression resid CV =	1.291
2002	0	0	0	0	0	20	0	avg sampling err CV =	0.734
2003	93	0	0	0	0	93	93		
2004	48	0	0	0	0	48	50	<u>min yrs to detect -50%/20yr rate :</u>	
2005	47	47	0	0	0	94	64	w/ regression resid CV =	47.2
2006	150	147	0	0	0	296	137	w/ sample error CV =	32.4
2007	193	145	0	0	0	338	251	<u>most recent 10 years :</u>	
								Growth Rate =	1.146
								low 90%ci GR =	0.896
								high 90%ci GR =	1.466

Figure 18. Population trend for Steller's Eider (*Polysticta stelleri*) observed on aerial survey transects sampling 30,465 km² (eider strata only) of wetland tundra on the North Slope of Alaska. The indicated total birds population index is the sum of birds observed as singles, an equal number of unseen but indicated single birds, birds in pairs, and all birds in flocks, indicated by column divisions from bottom to top. Vertical lines indicate 95% confidence intervals based on sampling error calculated among transects. Stratification included 10 physiographic regions. Average annual growth rate was calculated by log-linear regression. Power calculations used alpha with $p=0.10$, beta at $p=0.20$, and a coefficient of variation based on either regression residuals or averaged sampling error. The power of the survey to detect trends can be compared across species using the estimated minimum number of years necessary to detect a slope of -0.0341 , a 50% decline in 20 years. To calculate slope, an index value of 20 was substituted for years with no observations.



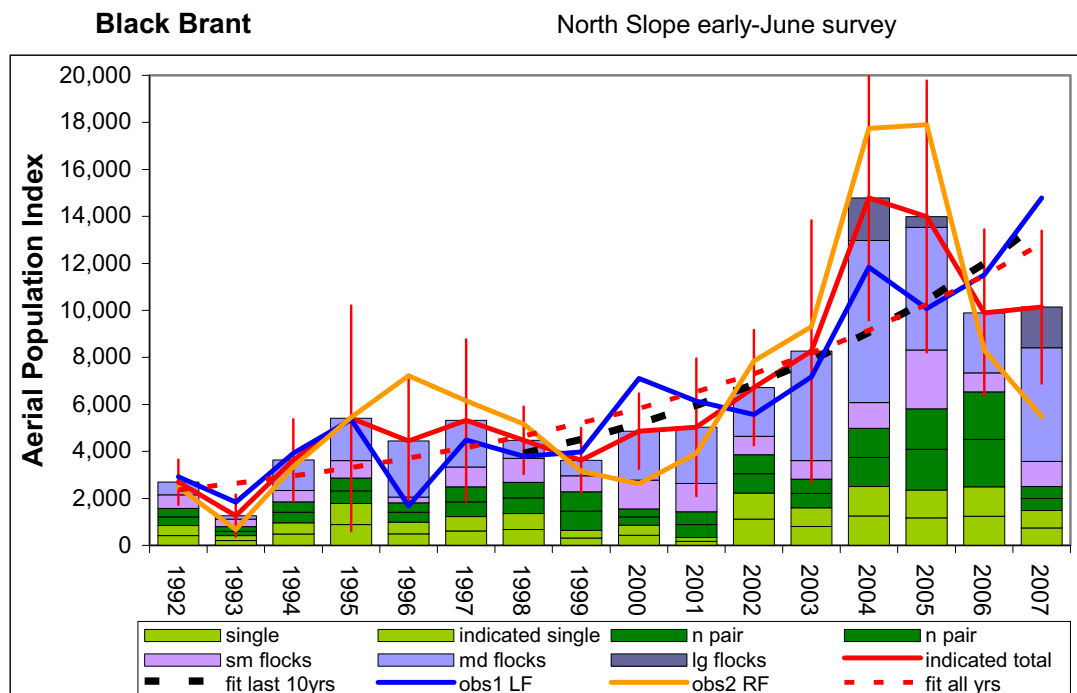
anls (nse 10 strata =30,465 km2)						Aerial index: Indicated total		WWSC	
year	2*sg	2*npr	sm flk	md flk	lg flk	Index	StdErr		
1992	98	55	0	0	0	153	85	n yrs =	16
1993	0	0	0	0	0	20	0	mean =	349
1994	55	588	109	0	0	752	585	std dev =	222
1995	148	0	0	0	0	148	108	ln linear slope =	0.0825
1996	87	392	261	0	0	740	344	SE slope =	0.0466
1997	0	94	0	0	0	94	62	Growth Rate =	1.086
1998	0	160	0	261	0	421	227	low 90%ci GR =	1.006
1999	112	319	0	0	0	431	210	high 90%ci GR =	1.173
2000	0	184	0	0	0	184	86		
2001	0	191	0	0	0	191	92	regression resid CV =	0.861
2002	94	225	0	0	0	319	232	avg sampling err CV =	0.593
2003	242	198	0	0	0	440	294		
2004	185	128	0	0	0	313	212	<u>min yrs to detect -50%/20yr rate :</u>	
2005	283	235	0	0	0	519	418	w/ regression resid CV =	36.1
2006	45	225	0	0	0	269	201	w/ sample error CV =	28.1
2007	132	464	0	0	0	596	58	<u>most recent 10 years :</u>	
								Growth Rate =	1.042
								low 90%ci GR =	0.969
								high 90%ci GR =	1.121

Figure 19. Population trend for White-winged Scoters (*Melanitta fusca*) observed on aerial survey transects sampling 30,465 km² (eider strata only) of wetland tundra on the North Slope of Alaska. The indicated total birds population index is the sum of birds observed as singles, an equal number of unseen but indicated single birds, birds in pairs, and all birds in flocks, indicated by column divisions from bottom to top. Vertical lines indicate 95% confidence intervals based on sampling error calculated among transects. Stratification included 10 physiographic regions. Average annual growth rate was calculated by log-linear regression. Power calculations used alpha with $p=0.10$, beta at $p=0.20$, and a coefficient of variation based on either regression residuals or averaged sampling error. The power of the survey to detect trends can be compared across species using the estimated minimum number of years necessary to detect a slope of -0.0341 , a 50% decline in 20 years. To calculate slope, an index value of 20 was substituted for years with no observations.



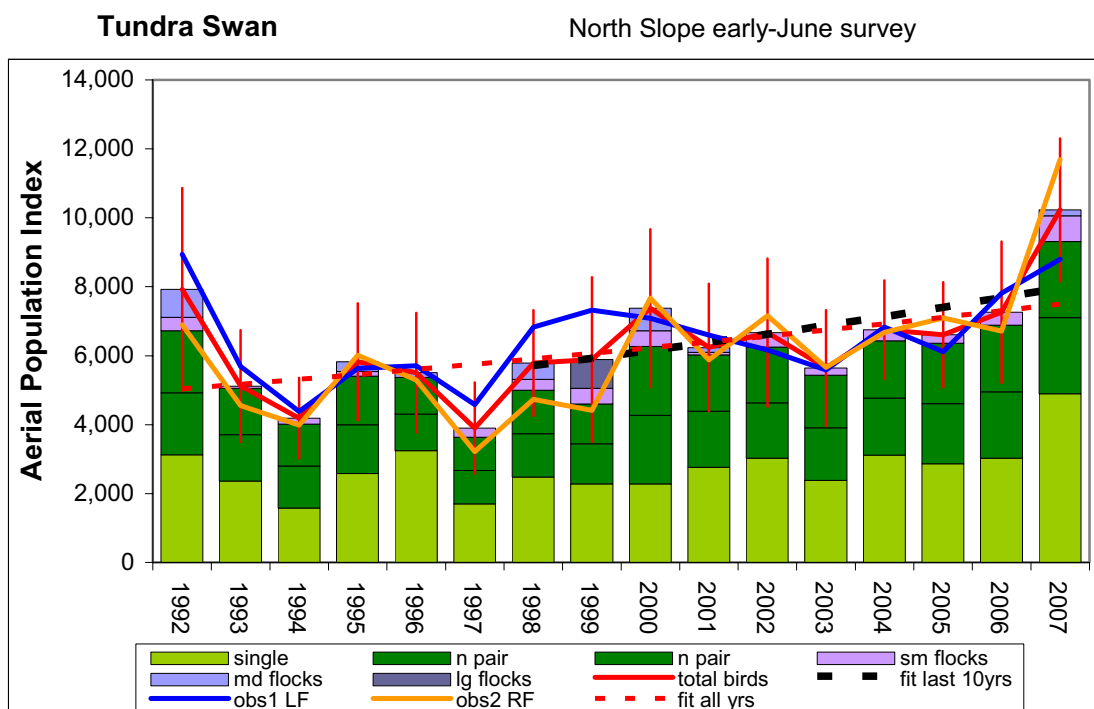
anls (nse 10 strata =30,465 km ²)						Aerial index: Indicated total		WFGO	
year	2*sg	2*npr	sm flk	md flk	lg flk	Index	StdErr		
1992	4794	8915	12107	60359	13185	99361	9691	n yrs =	16
1993	4760	16232	8712	11378	0	41083	2856	mean =	79714
1994	4538	24854	8764	15121	2240	55517	4494	std dev =	30156
1995	7702	18479	7962	14033	2096	50272	4464	In linear slope =	0.0404
1996	12280	28850	16325	36897	773	95125	5640	SE slope =	0.0167
1997	4632	24567	16692	11212	2854	59956	4413	Growth Rate =	1.041
1998	7884	19632	13290	13178	855	54839	4175	low 90%ci GR =	1.013
1999	7092	22928	17152	17275	7835	72283	6579	high 90%ci GR =	1.070
2000	6898	29138	19078	23780	0	78895	5433	regression resid CV =	0.308
2001	6108	35961	20830	26652	3081	92632	4963	avg sampling err CV =	0.076
2002	9522	34232	16392	25217	0	85363	6814		
2003	8911	22116	11314	11127	1141	54609	4023		
2004	8928	36562	24046	27344	2979	99859	7212	<u>min yrs to detect -50%/20yr rate :</u>	
2005	7071	30148	10886	17160	906	66171	5033	w/ regression resid CV =	18.2
2006	11929	50076	22780	22240	0	107025	8692	w/ sample error CV =	7.1
2007	13673	65197	28140	43777	11654	162441	10921	<u>most recent 10 years :</u>	
								Growth Rate =	1.072
								low 90%ci GR =	1.020
								high 90%ci GR =	1.126

Figure 20. Population trend for Greater White-fronted Geese (*Anser albifrons frontalis*) observed on aerial survey transects sampling 30,465 km² (eider strata only) of wetland tundra on the North Slope of Alaska. The indicated total birds population index is the sum of birds observed as singles, an equal number of unseen but indicated single birds, birds in pairs, and all birds in flocks, indicated by column divisions from bottom to top. Vertical lines indicate 95% confidence intervals based on sampling error calculated among transects. Stratification included 10 physiographic regions. Average annual growth rate was calculated by log-linear regression. Power calculations used alpha with $p=0.10$, beta at $p=0.20$, and a coefficient of variation based on either regression residuals or averaged sampling error. The power of the survey to detect trends can be compared across species using the estimated minimum number of years necessary to detect a slope of -0.0341 , a 50% decline in 20 years.



anls (nse 10 strata =30,465 km ²)						Aerial index: Indicated total		BRAN	
year	2*sg	2*npr	sm flk	md flk	lg flk	Index	StdErr		
1992	844	737	566	549	0	2695	490	n yrs =	16
1993	413	376	331	141	0	1262	460	mean =	6534
1994	960	893	479	1305	0	3636	888	std dev =	3888
1995	1780	1084	748	1795	0	5407	2452	In linear slope =	0.1128
1996	996	815	247	2387	0	4445	1439	SE slope =	0.0182
1997	1224	1264	849	1983	0	5320	1758	Growth Rate =	1.119
1998	1357	1333	1015	768	0	4473	731	low 90%ci GR =	1.086
1999	633	1647	677	674	0	3630	698	high 90%ci GR =	1.153
2000	863	692	1217	2093	0	4864	821	regression resid CV =	0.336
2001	344	1097	1198	2391	0	5030	1494	avg sampling err CV =	0.249
2002	2235	1628	782	2065	0	6710	1251		
2003	1609	1208	792	4655	0	8263	2844		
2004	2505	2476	1102	6885	1816	14783	2650	<u>min yrs to detect -50%/20yr rate :</u>	
2005	2354	3467	2499	5217	457	13994	2951	w/ regression resid CV =	19.3
2006	2486	4041	820	2553	0	9900	1808	w/ sample error CV =	15.8
2007	1481	1022	1068	4841	1726	10138	1657	<u>most recent 10 years :</u>	
								Growth Rate =	1.150
								low 90%ci GR =	1.097
								high 90%ci GR =	1.207

Figure 21. Population trend for Pacific Black Brant (*Branta bernicla nigricans*) observed on aerial survey transects sampling 30,465 km² (eider strata only) of wetland tundra on the North Slope of Alaska. The indicated total birds population index is the sum of birds observed as singles, an equal number of unseen but indicated single birds, birds in pairs, and all birds in flocks, indicated by column divisions from bottom to top. Vertical lines indicate 95% confidence intervals based on sampling error calculated among transects. Stratification included 10 physiographic regions. Average annual growth rate was calculated by log-linear regression. Power calculations used alpha with $p=0.10$, beta at $p=0.20$, and a coefficient of variation based on either regression residuals or averaged sampling error. The power of the survey to detect trends can be compared across species using the estimated minimum number of years necessary to detect a slope of -0.0341 , a 50% decline in 20 years.

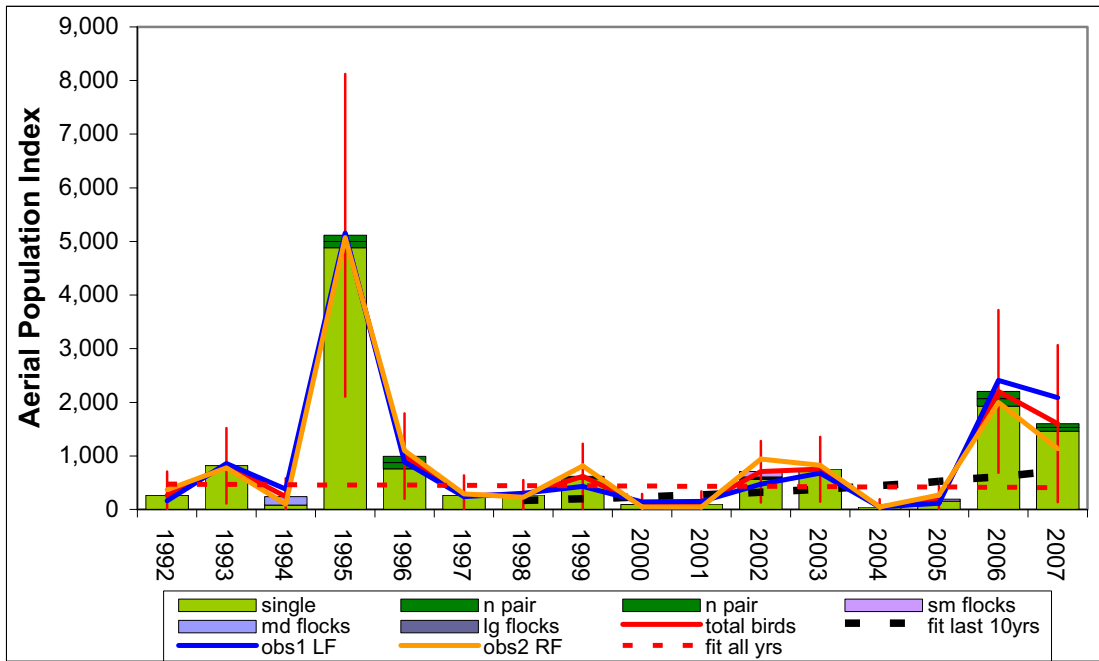


anls (nse 10 strata =30,465 km2)						Aerial index: Total birds		SWAN	
year	sg	2*npr	sm flk	md flk	lg flk	Index	StdErr		
1992	3129	3591	394	809	0	7924	1219	n yrs =	16
1993	2366	2682	72	0	0	5120	534	mean =	6307
1994	1582	2429	177	0	0	4188	444	std dev =	1505
1995	2581	2826	138	280	0	5824	690	In linear slope =	0.0265
1996	3246	2126	0	131	0	5503	583	SE slope =	0.0111
1997	1697	1942	260	0	0	3898	504	Growth Rate =	1.027
1998	2476	2525	314	473	0	5788	656	low 90%ci GR =	1.008
1999	2282	2317	449	0	839	5887	1029	high 90%ci GR =	1.046
2000	2276	3989	461	655	0	7380	1037	regression resid CV =	0.204
2001	2758	3265	71	142	0	6237	645	avg sampling err CV =	0.112
2002	3025	3223	420	0	0	6668	758		
2003	2381	3050	211	0	0	5641	629		
2004	3112	3320	322	0	0	6754	529	<u>min yrs to detect -50%/20yr rate :</u>	
2005	2862	3495	250	0	0	6607	566	w/ regression resid CV =	13.8
2006	3024	3862	376	0	0	7262	667	w/ sample error CV =	9.3
2007	4894	4414	749	174	0	10231	672	<u>most recent 10 years :</u>	
								Growth Rate =	1.038
								low 90%ci GR =	1.012
								high 90%ci GR =	1.064

Figure 22. Population trend for Tundra Swans (*Cygnus columbianus*) observed on aerial survey transects sampling 30,465 km² (eider strata only) of wetland tundra on the North Slope of Alaska. The total birds observed population index is the sum of birds observed as singles, birds in pairs, and all birds in flocks, indicated by column divisions from bottom to top. Vertical lines indicate 95% confidence intervals based on sampling error calculated among transects. Stratification included 10 physiographic regions. Average annual growth rate was calculated by log-linear regression. Calculations of power used alpha with $p=0.10$, beta at $p=0.20$, and a coefficient of variation based on either regression residuals or averaged sampling error. The power to detect trends can be compared across species using the estimated minimum number of years necessary to detect a slope of -0.0341 , a 50% decline in 20 years.

Snowy Owl

North Slope early-June survey



anls (nse 10 strata =30,465 km2)							Aerial index: Total birds		SNOW	
year	sg	2*npr	sm flk	md flk	lg flk	Index	StdErr			
1992	264	0	0	0	0	264	112		n yrs =	16
1993	817	0	0	0	0	817	180		mean =	892
1994	80	0	0	160	0	240	158		std dev =	1272
1995	4880	234	0	0	0	5113	780		ln linear slope =	-0.009
1996	759	236	0	0	0	995	227		SE slope =	0.0696
1997	265	0	0	0	0	265	94		Growth Rate =	0.991
1998	267	0	0	0	0	267	72		low 90%ci GR =	0.884
1999	570	48	0	0	0	618	155		high 90%ci GR =	1.111
2000	95	0	0	0	0	95	51		regression resid CV =	1.288
2001	101	0	0	0	0	101	60		avg sampling err CV =	0.357
2002	559	48	99	0	0	706	176			
2003	751	0	0	0	0	751	154			
2004	49	0	0	0	0	49	36		<u>min yrs to detect -50%/20yr rate :</u>	
2005	157	0	36	0	0	194	74		w/ regression resid CV =	47.1
2006	1927	277	0	0	0	2203	421		w/ sample error CV =	20.1
2007	1458	144	0	0	0	1602	412		<u>most recent 10 years :</u>	
									Growth Rate =	1.174
									low 90%ci GR =	0.936
									high 90%ci GR =	1.473

Figure 23. Population trend for Snowy Owls (*Bubo scandiacus*) observed on aerial survey transects sampling 30,465 km² (eider strata only) of wetland tundra on the North Slope of Alaska. The total birds observed population index is the sum of birds observed as singles, birds in pairs, and all birds in flocks, indicated by column divisions from bottom to top. Vertical lines indicate 95% confidence intervals based on sampling error calculated among transects. Stratification included 10 physiographic regions. Average annual growth rate was calculated by log-linear regression. Power calculations used alpha with p=0.10, beta at p=0.20, and a coefficient of variation based on either regression residuals or averaged sampling error. The power of the survey to detect trends can be compared across species using the estimated minimum number of years necessary to detect a slope of -0.0341, a 50% decline in 20 years.

APPENDIX 1. Common and scientific names of species mentioned in this report.

Common Name	Scientific Name
<u>Loons:</u> (Family <i>Gaviidae</i>)	
Yellow-billed loon	<i>Gavia adamsii</i>
Pacific loon	<i>G. pacifica</i>
Red-throated loon	<i>G. stellata</i>
<u>Gulls, terns, jaegers:</u> (Family <i>Laridae</i>)	
Glaucous gull	<i>Larus glaucescens</i>
Sabine's gull	<i>Xema sabini</i>
Arctic tern	<i>Sterna paradisaea</i>
Long-tailed jaegers	<i>Stercorarius longicaudus</i>
Parasitic jaeger	<i>S. parasiticus</i>
Pomarine jaeger	<i>S. pomarinus</i>
<u>Ducks, geese, swans:</u> (Family <i>Anatidae</i>)	
Red-breasted merganser	<i>Mergus serrator</i>
Mallard	<i>Anas platyrhynchos</i>
American wigeon	<i>A. americana</i>
Am. Green-winged teal	<i>A. crecca</i>
Northern pintail	<i>A. acuta</i>
Northern shoveler	<i>A. clypeata</i>
Greater scaup	<i>Aythya marila,</i>
Lesser scaup	<i>A. affinis</i>
Long-tailed duck	<i>Clangula hyemalis</i>
Spectacled eider	<i>Somateria fischeri</i>
Common eider	<i>S. mollissima</i>
King eider	<i>S. spectabilis</i>
Steller's eider	<i>Polysticta stelleri</i>
Black scoter	<i>Melanitta nigra</i>
White-winged scoter	<i>M. fusca</i>
Snow goose	<i>Chen caerulescens</i>
Canada goose	<i>Branta canadensis</i>
Black brant	<i>B. bernicla</i>
Greater white-fronted goose	<i>Anser albifrons</i>
Tundra swan	<i>Cygnus columbianus</i>
<u>Shorebirds:</u> (Families <i>Scolopacidae</i> , <i>Charadriidae</i>)	
	<i>Charadrius spp.</i> , <i>Pluvialis spp.</i> , <i>Calidris spp.</i> , <i>Arenaria spp.</i> , <i>Numenius spp.</i> , <i>Limnodromus sp</i>
<u>Cranes:</u> (Family <i>Gruidae</i>)	
Sandhill crane	<i>Grus canadensis</i>
<u>Ravens:</u> (Family <i>Corvidae</i>)	
Common raven	<i>Corvus corax</i>
<u>Owls:</u> (Family <i>Strigidae</i>)	
Short-eared owl	<i>Asio flammeus</i>
Snowy owl	<i>Bubo scandiacus</i>
<u>Eagles:</u> (Family <i>Accipitridae</i>)	
Golden eagle	<i>Haliaeetus leucocephalus</i>