



Species Group: *Aridland Birds*



General Information

Primary Bird Conservation Regions

- Great Basin
- Edwards Plateau
- Coastal California
- Sonoran and Mojave Deserts
- Chihuahuan Desert

Total Number of Species

- 86

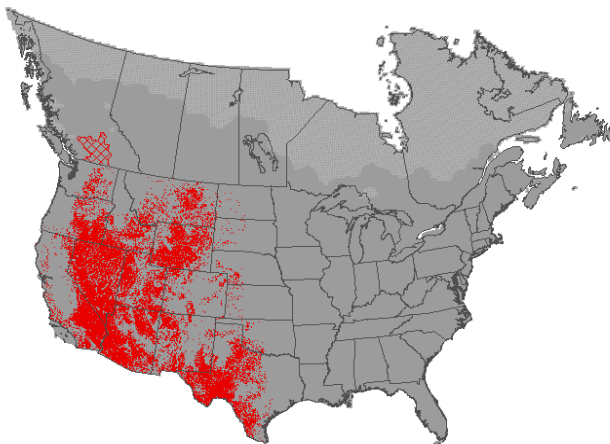
Percentage of Species with BBS Information

- 70.9

Average Percentage of Range in BBS Survey Area

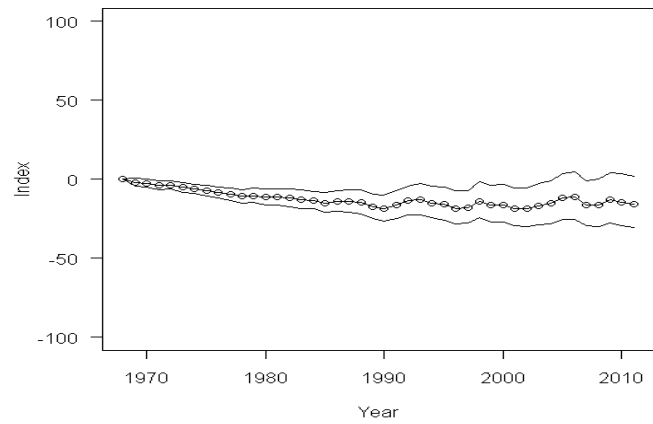
- 57.9

Locale Map For Group

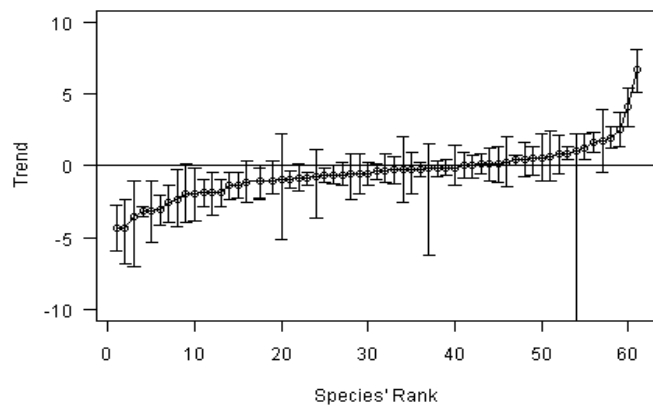


Population Change Summary			
N of Species = 61			
Group	Time Period	Total % Change	95% Credible Interval
Aridland Birds	1968-2011	-15.7	-30.5, 2.2

Composite Change for Species Group



Long-term Population Trends (1966-2011)





Species Group: *Aridland Birds*



Long-term Annual Population Change (1966-2011)

Species	N	%/Yr	2.5%-97.5%	Species	N	%/Yr	2.5%-97.5%
Greater Sage-Grouse	155	-3.6	-7.2, -1.1	Cactus Wren	243	-1.9	-2.9, -1.0
Scaled Quail	208	-3.1	-4.2, -2.1	Rock Wren	932	-0.6	-1.4, 0.2
California Quail	429	1.7	1.0, 2.4	Canyon Wren	345	-0.3	-2.0, 1.0
Gambel's Quail	147	-0.2	-6.3, 1.5	Bewick's Wren	938	-1.0	-1.6, -0.3
White-tailed Kite	132	-0.6	-2.0, 0.8	Black-tailed Gnatcatcher	122	-2.0	-4.0, -0.2
Harris's Hawk	74	-1.9	-3.5, -0.4	Wrentit	164	-0.7	-1.2, -0.2
Golden Eagle	662	0.0	-0.9, 0.7	Sage Thrasher	454	-0.5	-1.4, 0.2
Crested Caracara	102	6.8	5.2, 8.3	Bendire's Thrasher	77	-4.4	-7.0, -2.4
White-winged Dove	283	0.9	-0.5, 2.2	Curve-billed Thrasher	223	-1.4	-2.4, -0.5
Inca Dove	192	2.6	1.3, 3.8	California Thrasher	100	-1.9	-2.9, -1.0
Common Ground-Dove	324	-0.7	-1.3, 0.0	Crissal Thrasher	87	0.7	-1.1, 2.5
Greater Roadrunner	470	0.2	-0.6, 0.8	Le Conte's Thrasher	53	-3.2	-5.4, -1.1
Burrowing Owl	578	-1.1	-2.4, -0.2	Phainopepla	190	0.6	-1.1, 2.2
Lesser Nighthawk	199	1.0	-18.9, 2.2	Lucy's Warbler	64	0.5	-0.8, 1.7
Common Poorwill	337	-0.6	-2.4, 0.9	Green-tailed Towhee	445	-0.4	-1.0, 0.1
White-throated Swift	382	-0.8	-3.8, 1.1	Canyon Towhee	174	-1.4	-2.3, -0.5
Black-chinned Hummingbird	423	1.3	0.4, 2.2	California Towhee	149	-0.1	-0.6, 0.4
Anna's Hummingbird	215	2.0	1.3, 2.8	Abert's Towhee	34	1.8	-0.4, 4.0
Costa's Hummingbird	97	-1.0	-5.2, 2.3	Rufous-crowned Sparrow	187	-1.1	-2.3, 0.0
Allen's Hummingbird	55	-4.5	-6.1, -2.8	Brewer's Sparrow	673	-0.4	-1.2, 0.8
Gila Woodpecker	44	-1.1	-2.6, 0.3	Black-chinned Sparrow	92	-2.0	-4.0, 0.1
Ladder-backed Woodpecker	314	-0.2	-0.7, 0.4	Lark Sparrow	1578	-0.9	-1.4, -0.5
Gilded Flicker	34	-2.4	-4.4, -0.3	Black-throated Sparrow	432	-1.1	-2.0, 0.4
Vermilion Flycatcher	119	0.2	-1.2, 1.4	Sage Sparrow	374	-0.1	-1.4, 1.5
Ash-throated Flycatcher	690	0.9	0.4, 1.3	Pyrrhuloxia	133	-0.9	-1.8, 0.1
Brown-crested Flycatcher	95	4.2	2.8, 5.5	Painted Bunting	487	-0.2	-0.8, 0.3
Cassin's Kingbird	270	0.0	-0.9, 1.0	Bronzed Cowbird	116	0.2	-1.5, 2.1
Western Kingbird	1580	0.4	0.0, 0.7	Scott's Oriole	223	-0.3	-1.3, 0.6
Loggerhead Shrike	2011	-3.2	-3.6, -2.9	Lawrence's Goldfinch	85	-0.3	-2.7, 2.1
Bell's Vireo	518	0.6	-0.7, 1.3				
Chihuahuan Raven	173	0.2	-1.0, 1.3				
Verdin	193	-2.7	-4.1, -1.4				

Downloaded from https://academic.oup.com/condor/advance-article-abstract/doi/10.1093/condor/ndz011/5364777/pdf by guest on 26 March 2023



Species Group: *Aridland Obligate Birds*



General Information

Primary Bird Conservation Regions

- Great Basin
- Edwards Plateau
- Coastal California
- Sonoran and Mojave Deserts
- Chihuahuan Desert

Total Number of Species

- 32

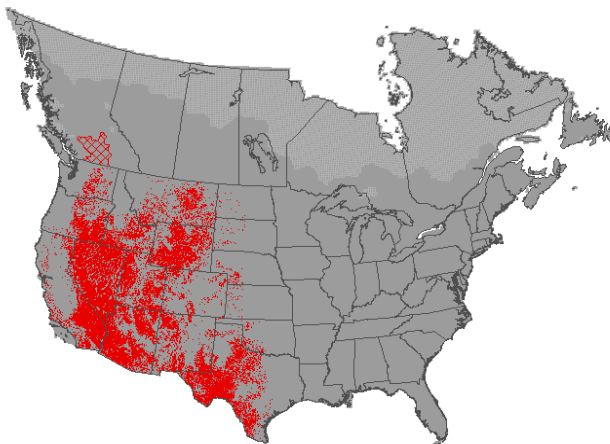
Percentage of Species with BBS Results

- 53.1

Average Percentage of Range in BBS Survey Area

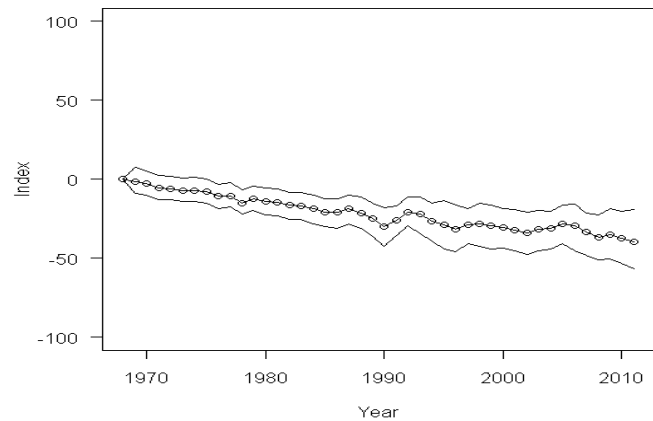
- 63.1

Locale Map For Group

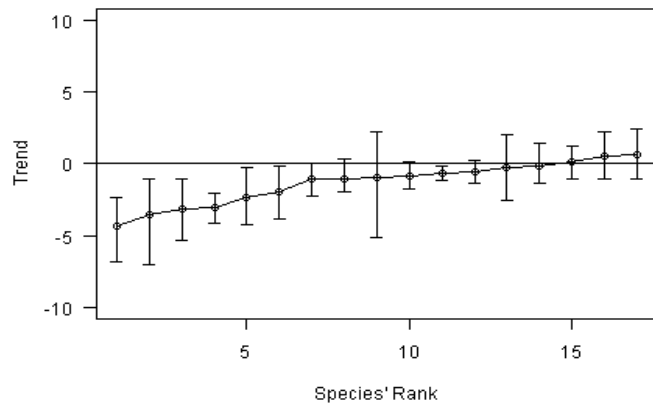


Population Change Summary			
N of Species = 17			
Group	Time Period	Total % Change	95% Credible Interval
Aridland Obligate Birds	1968-2011	-39.7	-56.8, -18.8

Composite Change for Species Group



Long-term Population Trends (1966-2011)





Species Group: *Aridland Obligate Birds*



Long-term Annual Population Change (1966-2011)

Species	N	%/Yr	2.5%-97.5%
Greater Sage-Grouse	155	-3.6	-7.2, -1.1
Scaled Quail	208	-3.1	-4.2, -2.1
Costa's Hummingbird	97	-1.0	-5.2, 2.3
Gilded Flicker	34	-2.4	-4.4, -0.3
Chihuahuan Raven	173	0.2	-1.0, 1.3
Black-tailed Gnatcatcher	122	-2.0	-4.0, -0.2
Wrentit	164	-0.7	-1.2, -0.2
Sage Thrasher	454	-0.5	-1.4, 0.2
Bendire's Thrasher	77	-4.4	-7.0, -2.4
Crissal Thrasher	87	0.7	-1.1, 2.5
Le Conte's Thrasher	53	-3.2	-5.4, -1.1
Phainopepla	190	0.6	-1.1, 2.2
Rufous-crowned Sparrow	187	-1.1	-2.3, 0.0
Black-throated Sparrow	432	-1.1	-2.0, 0.4
Sage Sparrow	374	-0.1	-1.4, 1.5
Pyrrhuloxia	133	-0.9	-1.8, 0.1
Lawrence's Goldfinch	85	-0.3	-2.7, 2.1



Species Group: *Grassland Birds*



General Information

Primary Bird Conservation Regions

- Prairie Potholes
- Badlands and Prairies
- Shortgrass Prairie
- Central Mixed Grass Prairie
- Oaks and Prairies
- Eastern Tallgrass Prairie
- Gulf Coastal Prairie

Total Number of Species

- 47

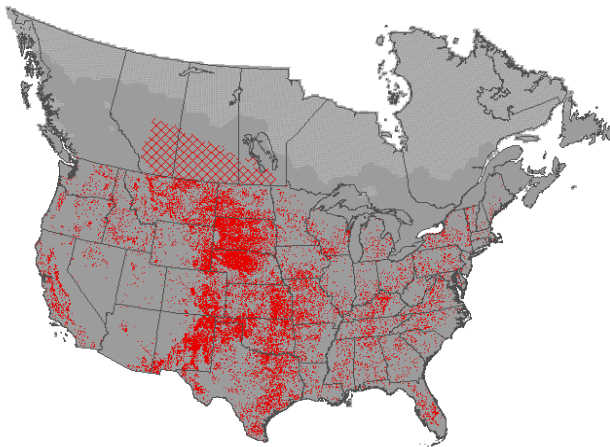
Percentage of Species with BBS Results

- 85.1

Average Percentage of Range in BBS Survey Area

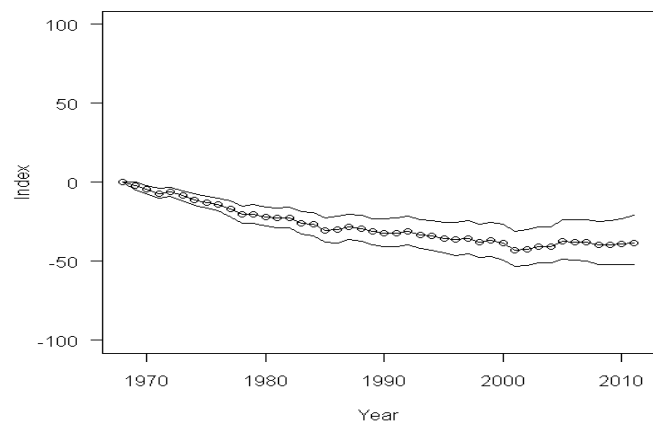
- 74.4

Locale Map For Group

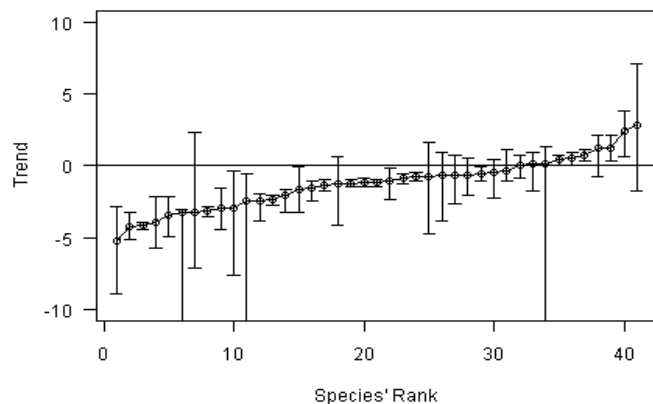


Population Change Summary			
N of Species = 41			
Group	Time Period	Total % Change	95% Credible Interval
Grassland Birds	1968-2011	-38.4	-51.8, -20.9

Composite Change for Species Group



Long-term Population Trends (1966-2011)





Species Group: *Grassland Birds*



Long-term Annual Population Change (1966-2011)

Species	N	%/Yr	2.5%-97.5%	Species	N	%/Yr	2.5%-97.5%
Blue-winged Teal	1241	0.1	-18.1, 1.4	Baird's Sparrow	209	-3.0	-4.6, -1.6
Cinnamon Teal	478	-2.5	-20.7, -0.6	Henslow's Sparrow	360	-0.7	-2.1, 0.5
Northern Shoveler	667	2.5	0.7, 3.9	Le Conte's Sparrow	363	-1.7	-3.3, -0.1
Northern Pintail	740	-1.3	-4.2, 0.6	McCown's Longspur	112	-5.3	-9.1, -2.9
Sharp-tailed Grouse	306	-0.7	-2.7, 0.8	Chestnut-coll Longspur	214	-4.3	-5.2, -3.4
Greater Prairie-Chicken	100	2.9	-1.8, 7.2	Dickcissel	1279	-0.5	-1.1, 0.0
Northern Bobwhite	1964	-4.2	-4.5, -4.0	Bobolink	1565	-2.1	-3.3, -1.7
Swainson's Hawk	1107	0.7	0.3, 1.2	Eastern Meadowlark	2498	-3.4	-19.8, -3.1
Ferruginous Hawk	485	1.3	0.3, 2.1	Western Meadowlark	2029	-1.3	-1.5, -1.0
Golden Eagle	662	0.0	-0.9, 0.7				
American Kestrel	3418	-1.5	-2.5, -1.1				
Mountain Plover	81	-3.0	-7.8, -0.4				
Willet	496	-0.4	-1.1, 1.2				
Upland Sandpiper	989	0.5	0.0, 1.0				
Long-billed Curlew	436	0.1	-1.8, 0.9				
Wilson's Phalarope	573	-0.7	-3.9, 0.9				
Least Tern	156	-3.3	-7.2, 2.3				
Burrowing Owl	578	-1.1	-2.4, -0.2				
Short-eared Owl	449	-0.7	-4.9, 1.7				
Western Kingbird	1580	0.4	0.0, 0.7				
Eastern Kingbird	3325	-1.2	-1.5, -1.0				
Scissor-tailed Flycatcher	426	-0.8	-1.1, -0.5				
Loggerhead Shrike	2011	-3.2	-3.6, -2.9				
Horned Lark	2548	-2.4	-2.8, -2.1				
Sedge Wren	661	1.2	-0.8, 2.2				
Sprague's Pipit	233	-3.5	-5.0, -2.2				
Cassin's Sparrow	348	-0.5	-2.3, 0.5				
Clay-colored Sparrow	817	-1.4	-1.8, -1.0				
Vesper Sparrow	2220	-0.9	-1.2, -0.6				
Lark Bunting	534	-4.0	-5.8, -2.2				
Savannah Sparrow	2248	-1.2	-1.6, -0.9				
Grasshopper Sparrow	2131	-2.5	-3.9, -2.0				



Species Group: *Grassland Obligate Birds*



General Information

Primary Bird Conservation Regions

- Prairie Potholes
- Badlands and Prairies
- Shortgrass Prairie
- Central Mixed Grass Prairie
- Oaks and Prairies
- Eastern Tallgrass Prairie
- Gulf Coastal Prairie

Total Number of Species

- 25

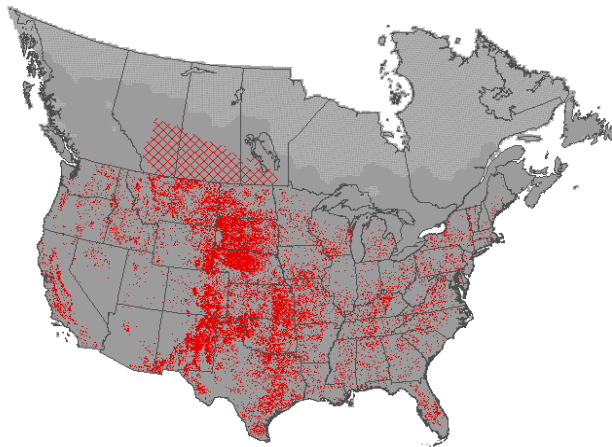
Percentage of Species with BBS Results

- 96.0

Average Percentage of Range in BBS Survey Area

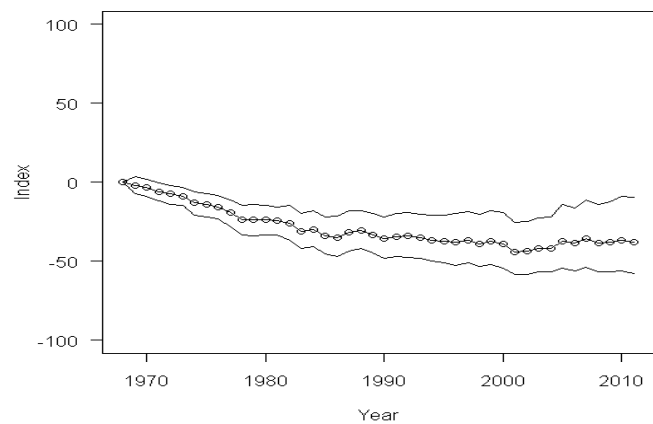
- 86.0

Locale Map For Group

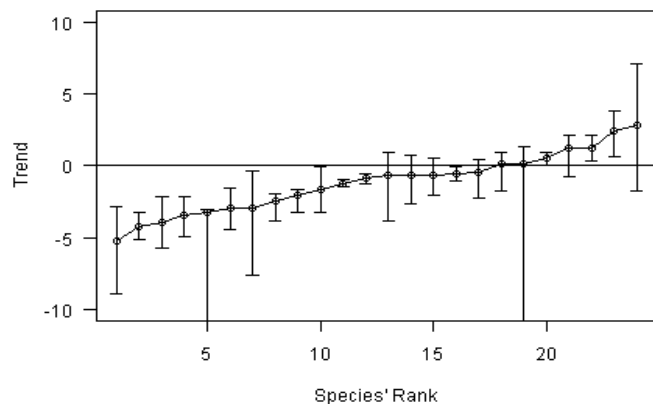


Population Change Summary			
N of Species = 24			
Group	Time Period	Total % Change	95% Credible Interval
Grassland Obligate Birds	1968-2011	-37.8	-57.5, -9.5

Composite Change for Species Group



Long-term Population Trends (1966-2011)





Species Group: *Grassland Obligate Birds*



Long-term Annual Population Change (1966-2011)

Species	N	%/Yr	2.5%-97.5%
Blue-winged Teal	1241	0.1	-18.1, 1.4
Northern Shoveler	667	2.5	0.7, 3.9
Sharp-tailed Grouse	306	-0.7	-2.7, 0.8
Greater Prairie-Chicken	100	2.9	-1.8, 7.2
Ferruginous Hawk	485	1.3	0.3, 2.1
Mountain Plover	81	-3.0	-7.8, -0.4
Upland Sandpiper	989	0.5	0.0, 1.0
Long-billed Curlew	436	0.1	-1.8, 0.9
Wilson's Phalarope	573	-0.7	-3.9, 0.9
Sedge Wren	661	1.2	-0.8, 2.2
Sprague's Pipit	233	-3.5	-5.0, -2.2
Cassin's Sparrow	348	-0.5	-2.3, 0.5
Vesper Sparrow	2220	-0.9	-1.2, -0.6
Lark Bunting	534	-4.0	-5.8, -2.2
Grasshopper Sparrow	2131	-2.5	-3.9, -2.0
Baird's Sparrow	209	-3.0	-4.6, -1.6
Henslow's Sparrow	360	-0.7	-2.1, 0.5
Le Conte's Sparrow	363	-1.7	-3.3, -0.1
McCown's Longspur	112	-5.3	-9.1, -2.9
Chestnut-coll Longspur	214	-4.3	-5.2, -3.4
Dickcissel	1279	-0.5	-1.1, 0.0
Bobolink	1565	-2.1	-3.3, -1.7
Eastern Meadowlark	2498	-3.4	-19.8, -3.1
Western Meadowlark	2029	-1.3	-1.5, -1.0



Species Group: *Boreal Forest Birds*



General Information

Primary Bird Conservation Regions

- Northwestern Interior Forest
- Boreal Taiga Plains
- Taiga Shield and Hudson Plains
- Boreal Softwood Shield
- Boreal Hardwood Transition
- Atlantic Northern Forest

Total Number of Species

- 115

Percentage of Species with BBS Results

- 69.6

Average Percentage of Range in BBS Survey Area

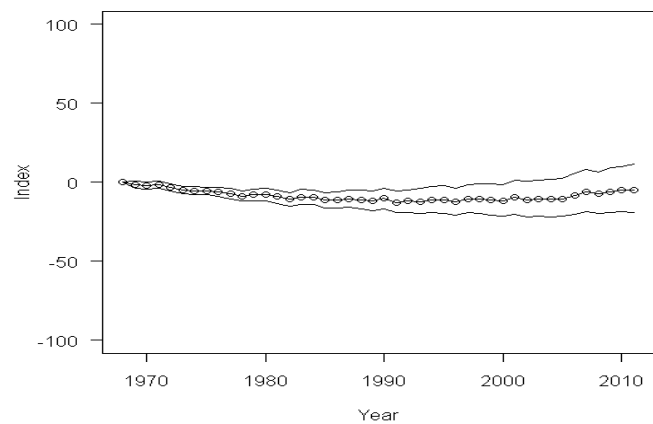
- 56.4

Locale Map For Group

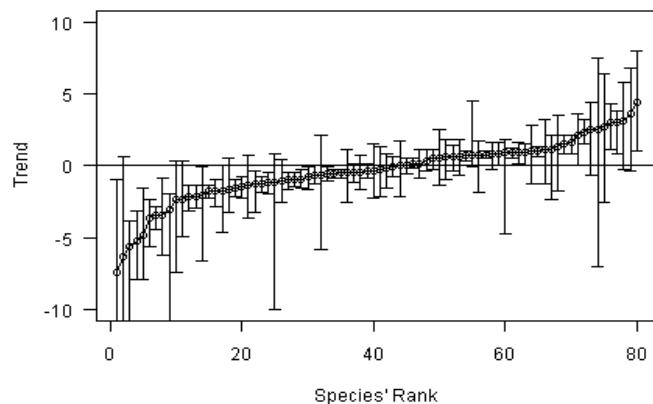


Population Change Summary			
N of Species = 80			
Group	Time Period	Total % Change	95% Credible Interval
Boreal Forest Birds	1968-2011	-4.9	-19.0, 11.6

Composite Change for Species Group



Long-term Population Trends (1966-2011)





Species Group: *Boreal Forest Birds*



Long-term Annual Population Change (1966-2011)

Species	N	%/Yr	2.5%-97.5%	Species	N	%/Yr	2.5%-97.5%
American Black Duck	559	-0.5	-2.6, 1.1	Black-capped Chickadee	2268	0.7	0.4, 1.0
Ring-necked Duck	472	2.8	-2.6, 6.5	Boreal Chickadee	371	0.7	-0.6, 1.8
Lesser Scaup	493	-2.1	-6.8, -0.1	Red-breasted Nuthatch	1679	1.5	0.9, 2.1
Bufflehead	240	2.6	-0.7, 4.5	Brown Creeper	1075	0.7	-0.1, 4.6
Common Goldeneye	331	1.0	-1.3, 2.9	Pacific Wren	327	-0.8	-1.6, -0.1
Barrow's Goldeneye	97	-1.4	-3.8, 0.8	Winter Wren	820	0.8	-0.3, 1.7
Hooded Merganser	413	4.5	1.1, 8.2	American Dipper	216	-0.4	-1.7, 0.7
Common Merganser	855	-1.8	-4.7, 0.0	Golden-crowned Kinglet	1055	-1.3	-3.4, -0.3
Red-breasted Merganser	79	-7.6	-30.9, -1.0	Ruby-crowned Kinglet	1169	0.2	-0.9, 1.1
Ruffed Grouse	1199	0.6	-0.9, 1.9	Veery	1426	-1.0	-1.4, -0.5
Common Loon	831	0.9	-0.3, 1.9	Swainson's Thrush	1251	-1.0	-1.6, -0.5
Sharp-shinned Hawk	1287	1.2	-2.4, 2.2	Hermit Thrush	1573	0.9	0.0, 1.6
Northern Goshawk	418	0.6	-1.4, 2.5	Varied Thrush	282	-2.2	-3.0, -1.4
Broad-winged Hawk	1466	0.9	0.1, 1.6	Tennessee Warbler	622	-0.4	-2.3, 1.5
Merlin	547	3.1	1.1, 4.4	Orange-crowned Warbler	736	-1.0	-1.6, -0.3
Solitary Sandpiper	102	-0.7	-6.0, 2.1	Nashville Warbler	1123	0.4	-0.4, 1.2
Greater Yellowlegs	105	3.7	-0.4, 6.9	Northern Parula	1640	1.0	0.6, 1.4
Lesser Yellowlegs	134	-5.3	-8.1, -3.3	Yellow Warbler	3284	-0.5	-0.8, -0.3
Black-billed Cuckoo	1662	-3.1	-13.0, -2.0	Magnolia Warbler	893	0.9	-4.8, 1.8
Barred Owl	1467	1.7	0.8, 2.2	Cape May Warbler	440	-3.5	-6.4, -0.9
Yellow-bellied Sapsucker	1044	0.8	-1.9, 1.8	Black-thr Blue Warbler	677	2.4	1.5, 3.3
Hairy Woodpecker	3225	0.9	0.5, 1.3	Yellow-rumped Warb	1666	0.1	-0.6, 0.6
Am. Three-toed Woodpecker	145	3.2	-0.2, 5.9	Black-thr Green Warbler	1009	0.6	-0.3, 1.1
Black-backed Woodpecker	263	1.4	-1.8, 3.5	Townsend's Warbler	268	0.0	-0.8, 0.7
Olive-sided Flycatcher	1232	-3.5	-4.6, -2.9	Blackburnian Warbler	775	0.6	-0.4, 1.5
Yellow-bell Flycatcher	457	2.1	0.0, 3.7	Palm Warbler	216	-2.4	-5.1, 0.4
Alder Flycatcher	1313	-1.2	-2.0, -0.5	Bay-breasted Warbler	382	-0.3	-2.2, 1.4
Least Flycatcher	1774	-1.8	-2.3, -1.4	Blackpoll Warbler	230	-6.4	-22.1, 0.6
Blue-headed Vireo	1110	3.1	0.9, 3.9	Black-and-white Warbler	1732	-0.4	-1.1, 0.1
Philadelphia Vireo	419	1.1	-1.3, 3.3	American Redstart	2006	-0.4	-0.8, 0.1
Red-eyed Vireo	3095	0.8	0.5, 1.0	Ovenbird	1956	0.1	-0.2, 0.5
Gray Jay	719	-0.2	-1.6, 0.9	Northern Waterthrush	1006	0.9	0.1, 1.7

Downloaded from https://academic.oup.com/condor/advance-article-abstract/doi/10.1093/condor/ndz011/5364777 by guest on 26 March 2023



Species Group: *Boreal Forest Birds*



Long-term Annual Population Change (1966-2011)

Species	N	%/Yr	2.5%-97.5%
Connecticut Warbler	231	-1.7	-3.3, 0.6
Mourning Warbler	867	-1.5	-2.3, -0.8
Wilson's Warbler	938	-1.8	-2.9, -1.0
Canada Warbler	741	-2.2	-3.2, -1.4
Chipping Sparrow	3654	-0.5	-0.9, -0.3
Fox Sparrow	431	0.2	-1.8, 1.9
Lincoln's Sparrow	844	-1.1	-2.6, 0.5
White-throated Sparrow	1035	-0.6	-1.1, 0.0
Dark-eyed Junco	1568	-1.3	-1.9, -0.8
Rusty Blackbird	231	-4.9	-8.1, -1.6
Pine Grosbeak	244	-2.4	-7.6, 0.3
Purple Finch	1381	-1.5	-2.2, -1.0
Red Crossbill	798	-1.2	-10.3, 0.8
White-winged Crossbill	369	2.6	-7.1, 7.6
Pine Siskin	1387	-3.8	-5.8, -2.4
Evening Grosbeak	1007	-5.8	-23.6, -3.9



Species Group: *Boreal Forest Obligate Birds*



General Information

Primary Bird Conservation Regions

- Northwestern Interior Forest
- Boreal Taiga Plains
- Taiga Shield and Hudson Plains
- Boreal Softwood Shield
- Boreal Hardwood Transition
- Atlantic Northern Forest

Total Number of Species

- 38

Percentage of Species with BBS Results

- 63.2

Average Percentage of Range in BBS Survey Area

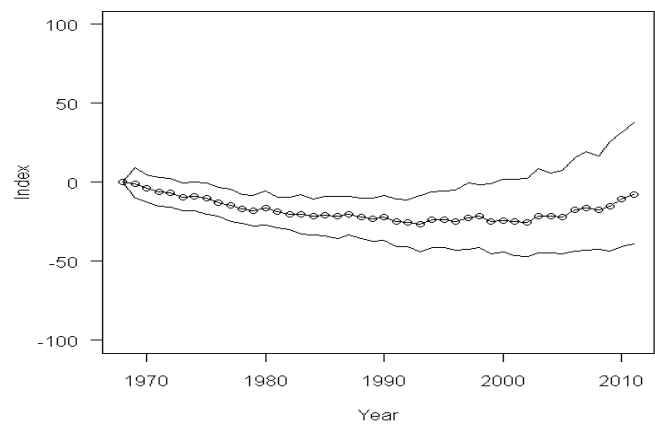
- 42.6

Locale Map For Group

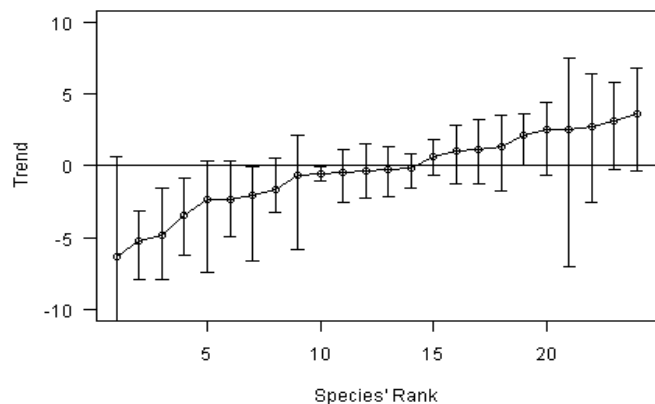


Population Change Summary			
N of Species = 24			
Group	Time Period	Total % Change	95% Credible Interval
Boreal Forest Obligate Birds	1968-2011	-7.5	-38.9, 37.6

Composite Change for Species Group



Long-term Population Trends (1966-2011)





Species Group: *Boreal Forest Obligate Birds*



Long-term Annual Population Change (1966-2011)

Species	N	%/Yr	2.5%-97.5%
American Black Duck	559	-0.5	-2.6, 1.1
Ring-necked Duck	472	2.8	-2.6, 6.5
Lesser Scaup	493	-2.1	-6.8, -0.1
Bufflehead	240	2.6	-0.7, 4.5
Common Goldeneye	331	1.0	-1.3, 2.9
Solitary Sandpiper	102	-0.7	-6.0, 2.1
Greater Yellowlegs	105	3.7	-0.4, 6.9
Lesser Yellowlegs	134	-5.3	-8.1, -3.3
Am. Three-toed Woodpecker	145	3.2	-0.2, 5.9
Black-backed Woodpecker	263	1.4	-1.8, 3.5
Yellow-bell Flycatcher	457	2.1	0.0, 3.7
Philadelphia Vireo	419	1.1	-1.3, 3.3
Gray Jay	719	-0.2	-1.6, 0.9
Boreal Chickadee	371	0.7	-0.6, 1.8
Tennessee Warbler	622	-0.4	-2.3, 1.5
Cape May Warbler	440	-3.5	-6.4, -0.9
Palm Warbler	216	-2.4	-5.1, 0.4
Bay-breasted Warbler	382	-0.3	-2.2, 1.4
Blackpoll Warbler	230	-6.4	-22.1, 0.6
Connecticut Warbler	231	-1.7	-3.3, 0.6
White-throated Sparrow	1035	-0.6	-1.1, 0.0
Rusty Blackbird	231	-4.9	-8.1, -1.6
Pine Grosbeak	244	-2.4	-7.6, 0.3
White-winged Crossbill	369	2.6	-7.1, 7.6



Species Group: *Eastern Forest Birds*



General Information

Primary Bird Conservation Regions

- Lower Great Lakes/ St. Lawrence Plain
- Prairie Hardwood Transition
- Central Hardwoods
- West Gulf Coastal Plain/ouachitas
- Mississippi Alluvial Valley
- Southeastern Coastal Plain
- Appalachian Mountains
- Piedmont
- New England/mid-atlantic Coast
- Peninsular Florida

Total Number of Species

- 118

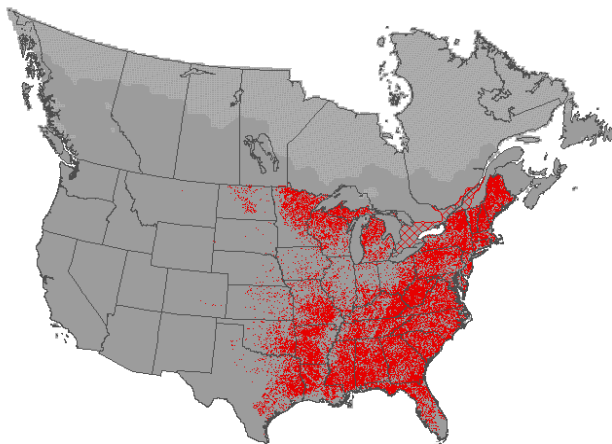
Percentage of Species with BBS Results

- 93.2

Average Percentage of Range in BBS Survey Area

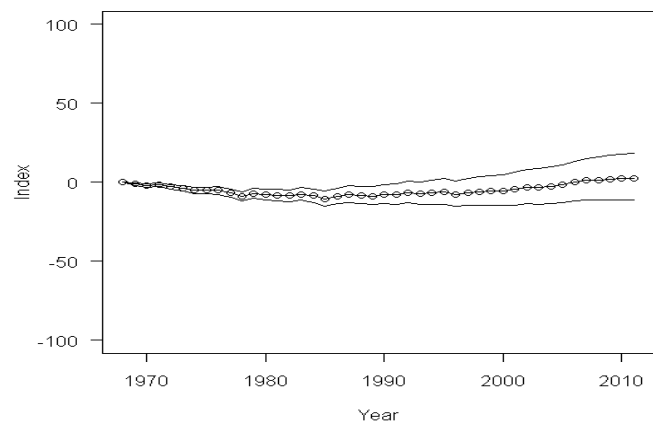
- 81.3

Locale Map For Group

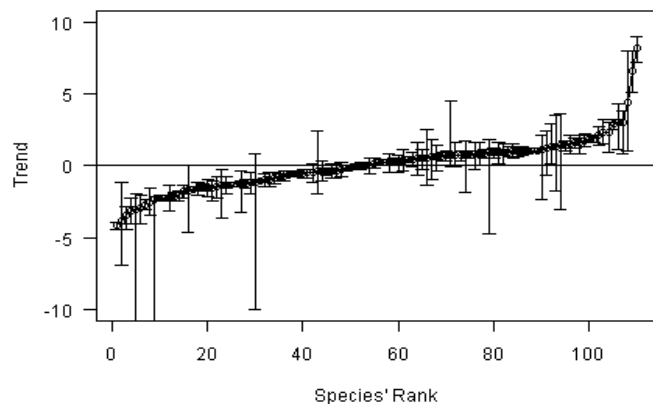


Population Change Summary			
N of Species = 111			
Group	Time Period	Total % Change	95% Credible Interval
Eastern Forest Birds	1968-2011	1.8	-11.9, 18.0

Composite Change for Species Group



Long-term Population Trends (1966-2011)





Species Group: *Eastern Forest Birds*



Long-term Annual Population Change (1966-2011)

Species	N	%/Yr	2.5%-97.5%	Species	N	%/Yr	2.5%-97.5%
Wood Duck	2191	2.2	1.5, 2.8	Pileated Woodpecker	2564	1.5	1.1, 1.8
Hooded Merganser	413	4.5	1.1, 8.2	Olive-sided Flycatcher	1232	-3.5	-4.6, -2.9
Common Merganser	855	-1.8	-4.7, 0.0	Eastern Wood-Pewee	2464	-1.3	-1.5, -1.2
Ruffed Grouse	1199	0.6	-0.9, 1.9	Acadian Flycatcher	1292	-0.4	-0.7, -0.1
Wild Turkey	2076	8.4	7.3, 9.2	Alder Flycatcher	1313	-1.2	-2.0, -0.5
Northern Bobwhite	1964	-4.2	-4.5, -4.0	Willow Flycatcher	1784	-1.6	-2.1, -1.2
Anhinga	222	1.3	0.1, 2.9	Least Flycatcher	1774	-1.8	-2.3, -1.4
Wood Stork	147	1.5	-3.1, 3.7	Eastern Phoebe	2491	0.3	-0.5, 0.8
Swallow-tailed Kite	115	6.7	5.3, 8.2	Great Crested Flycatcher	2593	0.0	-0.2, 0.1
Mississippi Kite	429	0.5	-0.6, 1.6	White-eyed Vireo	1470	0.4	0.2, 0.6
Sharp-shinned Hawk	1287	1.2	-2.4, 2.2	Yellow-throated Vireo	1792	1.0	0.8, 1.3
Cooper's Hawk	1929	2.4	0.9, 3.0	Blue-headed Vireo	1110	3.1	0.9, 3.9
Northern Goshawk	418	0.6	-1.4, 2.5	Warbling Vireo	2747	0.8	0.4, 1.1
Red-shouldered Hawk	1556	2.9	2.6, 3.3	Red-eyed Vireo	3095	0.8	0.5, 1.0
Broad-winged Hawk	1466	0.9	0.1, 1.6	Blue Jay	2979	-0.7	-0.8, -0.6
American Kestrel	3418	-1.5	-2.5, -1.1	Carolina Chickadee	1304	-0.1	-0.3, 0.1
Merlin	547	3.1	1.1, 4.4	Black-capped Chickadee	2268	0.7	0.4, 1.0
American Woodcock	612	-0.4	-2.0, 2.4	Tufted & Bl-cr Titmouse	1983	1.1	0.9, 1.3
Yellow-billed Cuckoo	2324	-1.5	-1.8, -1.3	Red-breasted Nuthatch	1679	1.5	0.9, 2.1
Black-billed Cuckoo	1662	-3.1	-13.0, -2.0	White-breasted Nuthatch	2603	1.7	1.3, 2.0
Eastern Screech-Owl	623	-1.4	-3.7, -0.3	Brown-headed Nuthatch	487	-0.3	-0.9, 0.2
Barred Owl	1467	1.7	0.8, 2.2	Brown Creeper	1075	0.7	-0.1, 4.6
Chuck-will's-widow	752	-2.2	-2.5, -1.9	Carolina Wren	1731	1.1	0.8, 1.2
Eastern Whip-poor-will	828	-2.8	-13.0, -2.2	House Wren	2935	0.3	0.0, 0.4
Chimney Swift	2522	-2.3	-2.5, -2.1	Winter Wren	820	0.8	-0.3, 1.7
Ruby-throated Hummingbird	2270	1.9	1.6, 2.2	Golden-crowned Kinglet	1055	-1.3	-3.4, -0.3
Red-headed Woodpecker	1797	-2.8	-3.1, -2.4	Blue-gray Gnatcatcher	2125	0.6	0.3, 1.0
Red-bellied Woodpecker	1996	1.1	0.9, 1.2	Eastern Bluebird	2482	1.9	1.7, 2.1
Yellow-bellied Sapsucker	1044	0.8	-1.9, 1.8	Veery	1426	-1.0	-1.4, -0.5
Hairy Woodpecker	3225	0.9	0.5, 1.3	Hermit Thrush	1573	0.9	0.0, 1.6
Red-cockaded Woodpecker	62	-4.0	-7.0, -1.1	Wood Thrush	2115	-2.3	-2.4, -2.1
Northern Flicker	4018	-1.5	-1.7, -1.2	Gray Catbird	2844	-0.1	-0.2, 0.0

Downloaded from https://academic.oup.com/condor/advance-article-abstract/doi/10.1093/condor/ndz001/5364777 by guest on 26 March 2023



Species Group: *Eastern Forest Birds*



Long-term Annual Population Change (1966-2011)

Species	N	%/Yr	2.5%-97.5%	Species	N	%/Yr	2.5%-97.5%
Brown Thrasher	2733	-1.1	-1.2, -1.0	Eastern Towhee	2025	-1.4	-1.5, -1.2
Cedar Waxwing	2664	0.3	-0.5, 0.8	Bachman's Sparrow	263	-3.1	-4.1, -2.1
Blue-winged Warbler	707	-0.4	-1.0, 0.3	Chipping Sparrow	3654	-0.5	-0.9, -0.3
Golden-winged Warbler	437	-2.6	-3.5, -1.6	Field Sparrow	2166	-2.4	-54.5, -2.2
Nashville Warbler	1123	0.4	-0.4, 1.2	Northern Cardinal	2389	0.3	0.2, 0.4
Northern Parula	1640	1.0	0.6, 1.4	Rose-breasted Grosbeak	1687	-0.7	-1.1, -0.4
Yellow Warbler	3284	-0.5	-0.8, -0.3	Blue Grosbeak	1660	0.9	0.6, 1.1
Chestnut-sided Warbler	1180	-1.4	-2.0, -0.8	Indigo Bunting	2505	-0.6	-0.7, -0.5
Magnolia Warbler	893	0.9	-4.8, 1.8	Painted Bunting	487	-0.2	-0.8, 0.3
Black-thr Blue Warbler	677	2.4	1.5, 3.3	Common Grackle	3308	-1.7	-1.8, -1.5
Yellow-rumped Warb	1666	0.1	-0.6, 0.6	Orchard Oriole	2006	-0.8	-1.1, -0.5
Black-thr Green Warbler	1009	0.6	-0.3, 1.1	Baltimore Oriole	2206	-1.2	-1.6, -1.0
Blackburnian Warbler	775	0.6	-0.4, 1.5	Purple Finch	1381	-1.5	-2.2, -1.0
Yellow-throated Warbler	811	1.0	0.5, 1.5	Red Crossbill	798	-1.2	-10.3, 0.8
Pine Warbler	1359	1.0	0.7, 1.3	American Goldfinch	3285	-0.1	-0.3, 0.1
Prairie Warbler	1109	-2.1	-2.5, -1.8				
Cerulean Warbler	431	-3.2	-4.2, -2.3				
Black-and-white Warbler	1732	-0.4	-1.1, 0.1				
American Redstart	2006	-0.4	-0.8, 0.1				
Prothonotary Warbler	718	-1.0	-1.5, -0.5				
Worm-eating Warbler	606	0.8	0.0, 1.7				
Swainson's Warbler	268	1.2	-0.7, 2.5				
Ovenbird	1956	0.1	-0.2, 0.5				
Northern Waterthrush	1006	0.9	0.1, 1.7				
Louisiana Waterthrush	912	0.5	0.0, 0.9				
Kentucky Warbler	1021	-0.9	-1.2, -0.4				
Mourning Warbler	867	-1.5	-2.3, -0.8				
Hooded Warbler	964	1.8	1.3, 2.3				
Canada Warbler	741	-2.2	-3.2, -1.4				
Yellow-breasted Chat	1952	-0.6	-0.8, -0.4				
Summer Tanager	1221	0.2	0.0, 0.4				
Scarlet Tanager	1746	0.0	-0.3, 0.2				



Species Group: *Eastern Forest Obligate Birds*



General Information

Primary Bird Conservation Regions

- Lower Great Lakes/ St. Lawrence Plain
- Prairie Hardwood Transition
- Central Hardwoods
- West Gulf Coastal Plain/ouachitas
- Mississippi Alluvial Valley
- Southeastern Coastal Plain
- Appalachian Mountains
- Piedmont
- New England/mid-atlantic Coast
- Peninsular Florida

Total Number of Species

- 28

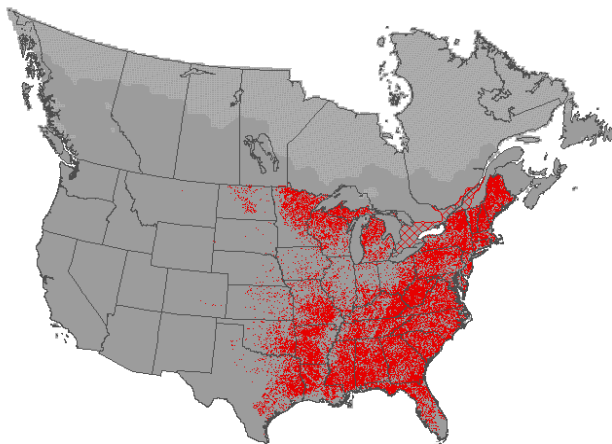
Percentage of Species with BBS Results

- 89.3

Average Percentage of Range in BBS Survey Area

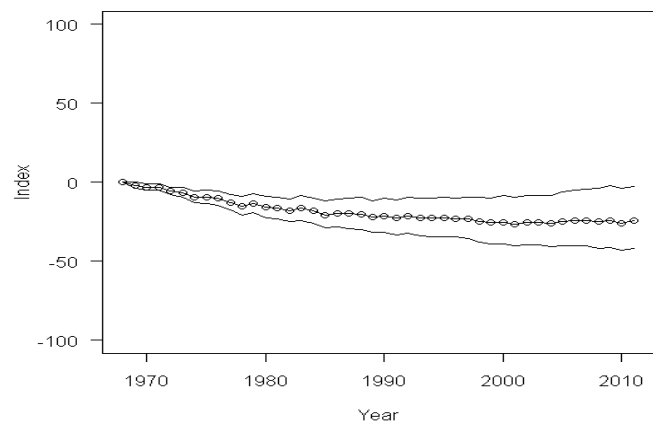
- 98.6

Locale Map For Group

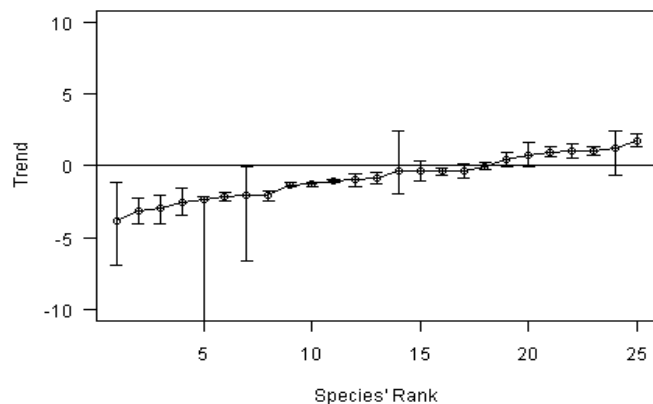


Population Change Summary			
N of Species = 25			
Group	Time Period	Total % Change	95% Credible Interval
Eastern Forest Obligate Birds	1968-2011	-24.0	-41.6, -2.4

Composite Change for Species Group



Long-term Population Trends (1966-2011)





Species Group: *Eastern Forest Obligate Birds*



Long-term Annual Population Change (1966-2011)

Species	N	%/Yr	2.5%-97.5%
American Woodcock	612	-0.4	-2.0, 2.4
Chuck-will's-widow	752	-2.2	-2.5, -1.9
Eastern Whip-poor-will	828	-2.8	-13.0, -2.2
Red-cockaded Woodpecker	62	-4.0	-7.0, -1.1
Eastern Wood-Pewee	2464	-1.3	-1.5, -1.2
Acadian Flycatcher	1292	-0.4	-0.7, -0.1
Yellow-throated Vireo	1792	1.0	0.8, 1.3
Brown-headed Nuthatch	487	-0.3	-0.9, 0.2
Brown Thrasher	2733	-1.1	-1.2, -1.0
Blue-winged Warbler	707	-0.4	-1.0, 0.3
Golden-winged Warbler	437	-2.6	-3.5, -1.6
Yellow-throated Warbler	811	1.0	0.5, 1.5
Pine Warbler	1359	1.0	0.7, 1.3
Prairie Warbler	1109	-2.1	-2.5, -1.8
Cerulean Warbler	431	-3.2	-4.2, -2.3
Prothonotary Warbler	718	-1.0	-1.5, -0.5
Worm-eating Warbler	606	0.8	0.0, 1.7
Swainson's Warbler	268	1.2	-0.7, 2.5
Louisiana Waterthrush	912	0.5	0.0, 0.9
Kentucky Warbler	1021	-0.9	-1.2, -0.4
Hooded Warbler	964	1.8	1.3, 2.3
Scarlet Tanager	1746	0.0	-0.3, 0.2
Eastern Towhee	2025	-1.4	-1.5, -1.2
Bachman's Sparrow	263	-3.1	-4.1, -2.1
Field Sparrow	2166	-2.4	-54.5, -2.2



Species Group: *Western Forest Birds*



General Information

Primary Bird Conservation Regions

- Northern Pacific Rainforest
- Northern Rockies
- Sierra Nevada
- Southern Rockies/colorado Plateau
- Sierra Madre Occidental

Total Number of Species

- 149

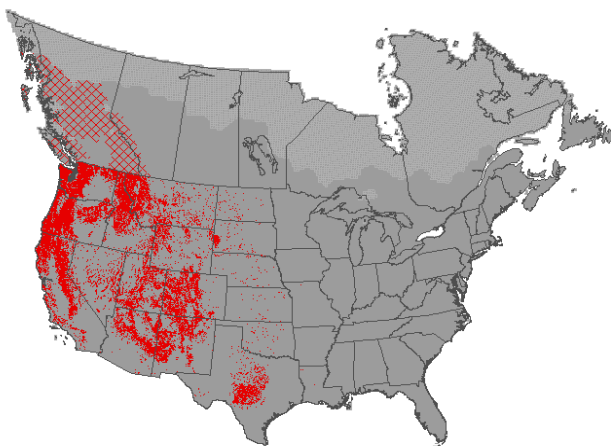
Percentage of Species with BBS Results

- 75.2

Average Percentage of Range in BBS Survey Area

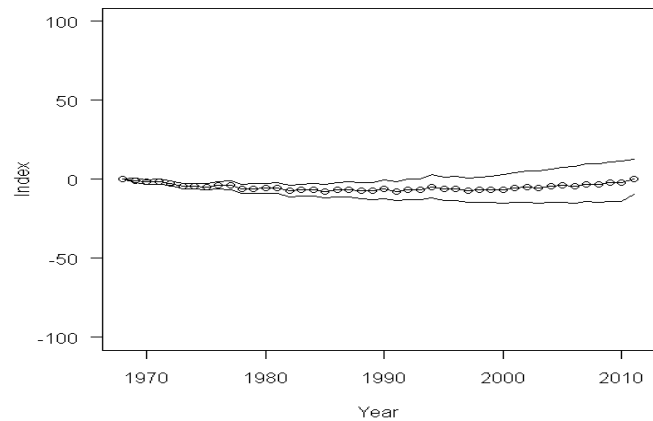
- 71.1

Locale Map For Group

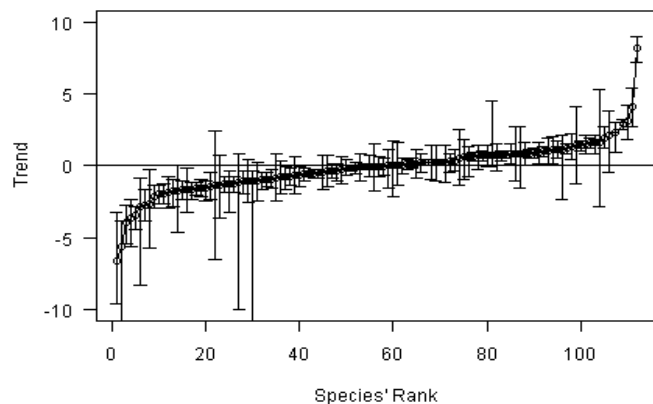


Population Change Summary			
N of Species = 114			
Group	Time Period	Total % Change	95% Credible Interval
Western Forest Birds	1968-2011	-3.5	-15.5, 9.7

Composite Change for Species Group



Long-term Population Trends (1966-2011)





Species Group: *Western Forest Birds*



Long-term Annual Population Change (1966-2011)

Species	N	%/Yr	2.5%-97.5%	Species	N	%/Yr	2.5%-97.5%
Barrow's Goldeneye	97	-1.4	-3.8, 0.8	Olive-sided Flycatcher	1232	-3.5	-4.6, -2.9
Common Merganser	855	-1.8	-4.7, 0.0	Western Wood-Pewee	1223	-1.7	-2.4, -1.2
Ruffed Grouse	1199	0.6	-0.9, 1.9	Willow Flycatcher	1784	-1.6	-2.1, -1.2
Dusky Grouse	82	1.7	-2.9, 5.5	Hammond's Flycatcher	472	0.8	0.1, 1.6
Sooty Grouse	122	-1.6	-3.1, -0.1	Gray Flycatcher	255	3.1	1.9, 4.3
Wild Turkey	2076	8.4	7.3, 9.2	Dusky Flycatcher	571	-0.1	-1.1, 0.8
Mountain Quail	182	0.3	-1.1, 1.5	Cordilleran & Pac-sl Flyc	648	-0.7	-1.5, -0.1
Sharp-shinned Hawk	1287	1.2	-2.4, 2.2	Brown-crested Flycatcher	95	4.2	2.8, 5.5
Cooper's Hawk	1929	2.4	0.9, 3.0	Gray Vireo	95	1.4	-1.3, 4.2
Northern Goshawk	418	0.6	-1.4, 2.5	Plumbeous Vireo	268	-2.7	-5.9, -0.3
Red-shouldered Hawk	1556	2.9	2.6, 3.3	Cassin's Vireo	451	1.1	0.5, 1.8
American Kestrel	3418	-1.5	-2.5, -1.1	Hutton's Vireo	223	1.0	0.1, 2.0
Band-tailed Pigeon	322	-2.4	-6.2, -1.1	Warbling Vireo	2747	0.8	0.4, 1.1
Western Screech-Owl	106	-1.4	-6.6, 2.5	Red-eyed Vireo	3095	0.8	0.5, 1.0
Northern Pygmy-Owl	226	0.9	-1.6, 2.7	Steller's Jay	619	-0.1	-0.5, 0.2
Barred Owl	1467	1.7	0.8, 2.2	Western Scrub-Jay	482	-0.2	-0.7, 0.4
Black Swift	122	-6.8	-9.8, -3.3	Pinyon Jay	286	-4.1	-5.6, -2.8
Vaux's Swift	265	-1.0	-2.6, 0.3	Clark's Nutcracker	400	0.0	-1.6, 1.1
Anna's Hummingbird	215	2.0	1.3, 2.8	Yellow-billed Magpie	46	-1.9	-3.0, -0.8
Calliope Hummingbird	218	-0.4	-1.5, 0.7	Northwestern Crow	49	0.2	-1.0, 1.4
Broad-tailed Hummingbird	293	-1.7	-2.4, -1.0	Violet-green Swallow	931	-0.3	-1.0, 0.2
Rufous Hummingbird	345	-2.0	-2.7, -1.4	Black-capped Chickadee	2268	0.7	0.4, 1.0
Lewis's Woodpecker	197	-2.9	-8.5, -0.9	Mountain Chickadee	569	-1.3	-1.9, -0.8
Acorn Woodpecker	202	0.2	-0.4, 0.8	Chestnut-backed Chickadee	233	-1.4	-2.4, -0.5
Williamson's Sapsucker	180	-0.1	-1.8, 1.6	Oak Titmouse	149	-2.0	-2.8, -1.3
Red-naped Sapsucker	383	1.4	0.4, 2.3	Juniper Titmouse	173	0.0	-1.4, 1.7
Red-breasted Sapsucker	273	0.2	-1.0, 1.4	Bushtit	468	-0.7	-2.0, 0.7
Nuttall's Woodpecker	124	0.7	-0.2, 1.5	Red-breasted Nuthatch	1679	1.5	0.9, 2.1
Hairy Woodpecker	3225	0.9	0.5, 1.3	White-breasted Nuthatch	2603	1.7	1.3, 2.0
White-headed Woodpecker	118	1.1	0.1, 2.1	Pygmy Nuthatch	246	-0.8	-2.6, 0.8
Northern Flicker	4018	-1.5	-1.7, -1.2	Brown Creeper	1075	0.7	-0.1, 4.6
Pileated Woodpecker	2564	1.5	1.1, 1.8	House Wren	2935	0.3	0.0, 0.4

Downloaded from https://academic.oup.com/condor/advance-article-abstract/doi/10.1093/condor/ndz001/5366667 by guest on 26 March 2023



Species Group: *Western Forest Birds*



Long-term Annual Population Change (1966-2011)

Species	N	%/Yr	2.5%-97.5%	Species	N	%/Yr	2.5%-97.5%
Pacific Wren	327	-0.8	-1.6, -0.1	Spotted Towhee	980	0.1	-0.3, 0.5
American Dipper	216	-0.4	-1.7, 0.7	Chipping Sparrow	3654	-0.5	-0.9, -0.3
Golden-crowned Kinglet	1055	-1.3	-3.4, -0.3	Fox Sparrow	431	0.2	-1.8, 1.9
Ruby-crowned Kinglet	1169	0.2	-0.9, 1.1	Lincoln's Sparrow	844	-1.1	-2.6, 0.5
Blue-gray Gnatcatcher	2125	0.6	0.3, 1.0	Dark-eyed Junco	1568	-1.3	-1.9, -0.8
Western Bluebird	452	0.8	-0.4, 1.5	Black-headed Grosbeak	951	1.0	0.6, 1.3
Mountain Bluebird	838	-0.7	-1.4, -0.2	Blue Grosbeak	1660	0.9	0.6, 1.1
Townsend's Solitaire	512	0.6	-0.8, 1.3	Lazuli Bunting	754	0.0	-0.7, 0.5
Veery	1426	-1.0	-1.4, -0.5	Hooded Oriole	138	0.9	-1.1, 2.8
Swainson's Thrush	1251	-1.0	-1.6, -0.5	Bullock's Oriole	1044	-0.6	-1.1, -0.2
Hermit Thrush	1573	0.9	0.0, 1.6	Scott's Oriole	223	-0.3	-1.3, 0.6
Varied Thrush	282	-2.2	-3.0, -1.4	Purple Finch	1381	-1.5	-2.2, -1.0
Gray Catbird	2844	-0.1	-0.2, 0.0	Cassin's Finch	459	-2.8	-3.9, -1.7
Cedar Waxwing	2664	0.3	-0.5, 0.8	Red Crossbill	798	-1.2	-10.3, 0.8
Orange-crowned Warbler	736	-1.0	-1.6, -0.3	Pine Siskin	1387	-3.8	-5.8, -2.4
Nashville Warbler	1123	0.4	-0.4, 1.2	Lesser Goldfinch	544	0.7	0.0, 1.5
Virginia's Warbler	132	-0.8	-2.0, 0.3	American Goldfinch	3285	-0.1	-0.3, 0.1
Yellow Warbler	3284	-0.5	-0.8, -0.3	Evening Grosbeak	1007	-5.8	-23.6, -3.9
Yellow-rumped Warb	1666	0.1	-0.6, 0.6				
Black-thr Gray Warbler	381	-1.1	-2.0, -0.3				
Townsend's Warbler	268	0.0	-0.8, 0.7				
Hermit Warbler	158	-0.1	-0.8, 0.7				
Grace's Warbler	66	-1.7	-3.3, -0.2				
American Redstart	2006	-0.4	-0.8, 0.1				
Ovenbird	1956	0.1	-0.2, 0.5				
Northern Waterthrush	1006	0.9	0.1, 1.7				
MacGillivray's Warbler	624	-1.0	-12.0, -0.3				
Wilson's Warbler	938	-1.8	-2.9, -1.0				
Yellow-breasted Chat	1952	-0.6	-0.8, -0.4				
Hepatic Tanager	51	2.2	-0.5, 3.9				
Summer Tanager	1221	0.2	0.0, 0.4				
Western Tanager	926	1.2	0.8, 1.5				



Species Group: *Western Forest Obligate Birds*



General Information

Primary Bird Conservation Regions

- Northern Pacific Rainforest
- Northern Rockies
- Sierra Nevada
- Southern Rockies/colorado Plateau
- Sierra Madre Occidental

Total Number of Species

- 67

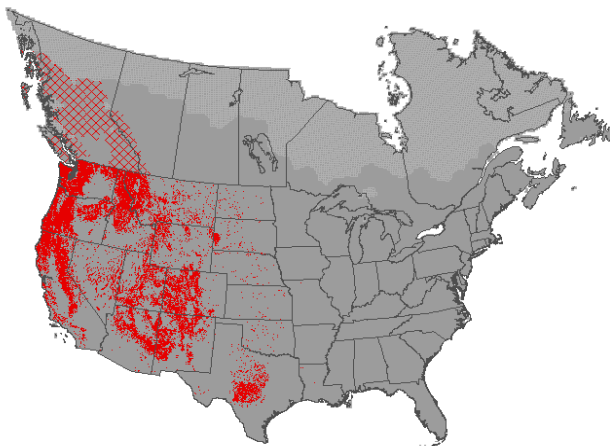
Percentage of Species with BBS Results

- 55.2

Average Percentage of Range in BBS Survey Area

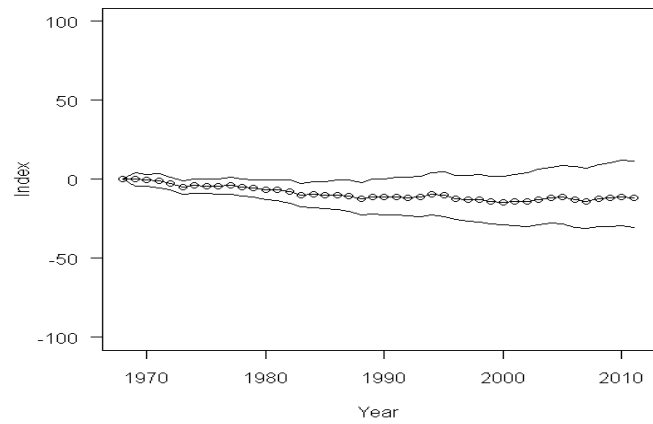
- 78.9

Locale Map For Group

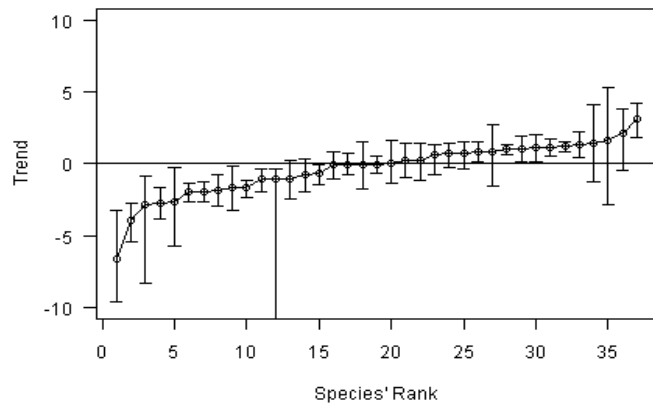


Population Change Summary			
N of Species = 37			
Group	Time Period	Total % Change	95% Credible Interval
Western Forest Obligate Birds	1968-2011	-11.6	-30.3, 11.5

Composite Change for Species Group



Long-term Population Trends (1966-2011)





Species Group: *Western Forest Obligate Birds*



Long-term Annual Population Change (1966-2011)

Species	N	%/Yr	2.5%-97.5%	Species	N	%/Yr	2.5%-97.5%
Dusky Grouse	82	1.7	-2.9, 5.5	Hepatic Tanager	51	2.2	-0.5, 3.9
Mountain Quail	182	0.3	-1.1, 1.5	Western Tanager	926	1.2	0.8, 1.5
Northern Pygmy-Owl	226	0.9	-1.6, 2.7	Black-headed Grosbeak	951	1.0	0.6, 1.3
Black Swift	122	-6.8	-9.8, -3.3	Lazuli Bunting	754	0.0	-0.7, 0.5
Vaux's Swift	265	-1.0	-2.6, 0.3	Cassin's Finch	459	-2.8	-3.9, -1.7
Rufous Hummingbird	345	-2.0	-2.7, -1.4				
Lewis's Woodpecker	197	-2.9	-8.5, -0.9				
Williamson's Sapsucker	180	-0.1	-1.8, 1.6				
Red-naped Sapsucker	383	1.4	0.4, 2.3				
Red-breasted Sapsucker	273	0.2	-1.0, 1.4				
Nuttall's Woodpecker	124	0.7	-0.2, 1.5				
White-headed Woodpecker	118	1.1	0.1, 2.1				
Western Wood-Pewee	1223	-1.7	-2.4, -1.2				
Hammond's Flycatcher	472	0.8	0.1, 1.6				
Gray Flycatcher	255	3.1	1.9, 4.3				
Dusky Flycatcher	571	-0.1	-1.1, 0.8				
Cordilleran & Pac-sl Flyc	648	-0.7	-1.5, -0.1				
Gray Vireo	95	1.4	-1.3, 4.2				
Plumbeous Vireo	268	-2.7	-5.9, -0.3				
Cassin's Vireo	451	1.1	0.5, 1.8				
Hutton's Vireo	223	1.0	0.1, 2.0				
Pinyon Jay	286	-4.1	-5.6, -2.8				
Yellow-billed Magpie	46	-1.9	-3.0, -0.8				
Oak Titmouse	149	-2.0	-2.8, -1.3				
Juniper Titmouse	173	0.0	-1.4, 1.7				
Western Bluebird	452	0.8	-0.4, 1.5				
Townsend's Solitaire	512	0.6	-0.8, 1.3				
Virginia's Warbler	132	-0.8	-2.0, 0.3				
Black-thr Gray Warbler	381	-1.1	-2.0, -0.3				
Hermit Warbler	158	-0.1	-0.8, 0.7				
Grace's Warbler	66	-1.7	-3.3, -0.2				
MacGillivray's Warbler	624	-1.0	-12.0, -0.3				



Species Group: *Subtropical Forest Birds*



General Information

Primary Bird Conservation Region

- Tamaulipan Brushlands

Total Number of Species

- 43

Percentage of Species with BBS Results

- 34.9

Average Percentage of Range in BBS Survey Area

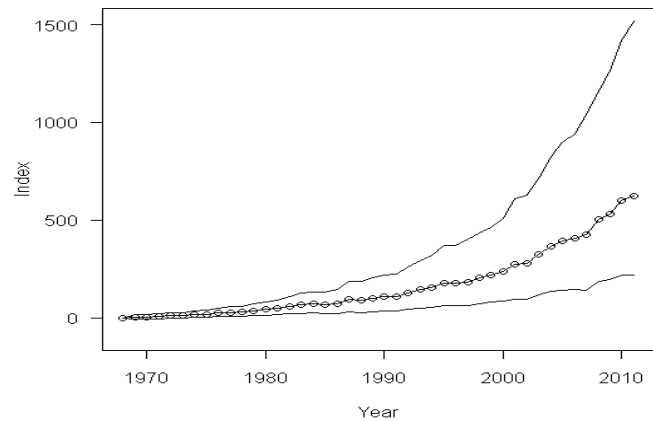
- 23.2

Locale Map For Group

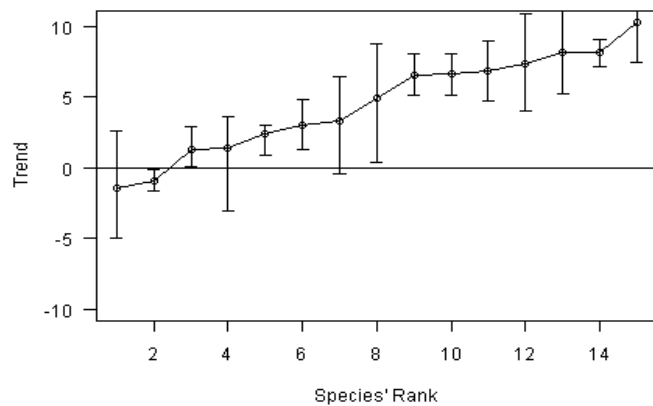


Population Change Summary			
N of Species = 15			
Group	Time Period	Total % Change	95% Credible Interval
Subtropical Forest Birds	1968-2011	623.4	221.1,1517.0

Composite Change for Species Group



Long-term Population Trends (1966-2011)





Species Group: *Subtropical Forest Birds*



Long-term Annual Population Change (1966-2011)

Species	N	%/Yr	2.5%-97.5%
Wild Turkey	2076	8.4	7.3, 9.2
Anhinga	222	1.3	0.1, 2.9
Glossy Ibis	96	3.4	-0.4, 6.6
White-faced Ibis	172	5.1	0.4, 9.0
Roseate Spoonbill	67	7.6	4.1, 11.1
Wood Stork	147	1.5	-3.1, 3.7
Swallow-tailed Kite	115	6.7	5.3, 8.2
Cooper's Hawk	1929	2.4	0.9, 3.0
Crested Caracara	102	6.8	5.2, 8.3
Groove-billed Ani	23	-1.5	-5.1, 2.6
Golden-fronted Woodpecker	104	-0.9	-1.7, -0.2
Couch's Kingbird	39	10.6	7.7, 13.2
Green Jay	29	8.4	5.3, 12.3
Long-billed Thrasher	40	7.0	4.8, 9.2
Olive Sparrow	37	3.1	1.3, 4.9



Species Group: *Generalists*



General Information

Primary Bird Conservation Regions

- Generalists are widespread species found in at least 3 of the major habitats

Total Number of Species

- 68

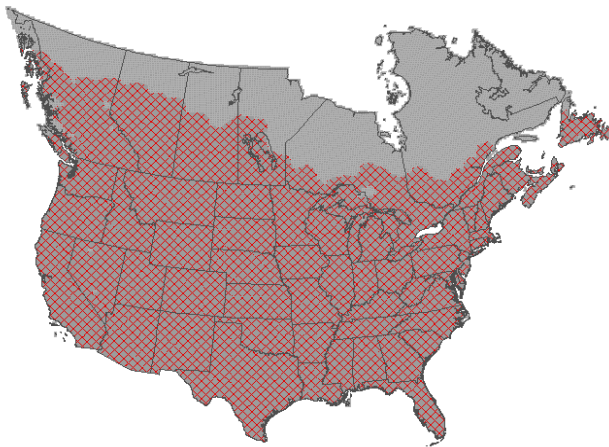
Percentage of Species with BBS Results

- 95.6

Average Percentage of Range in BBS Survey Area

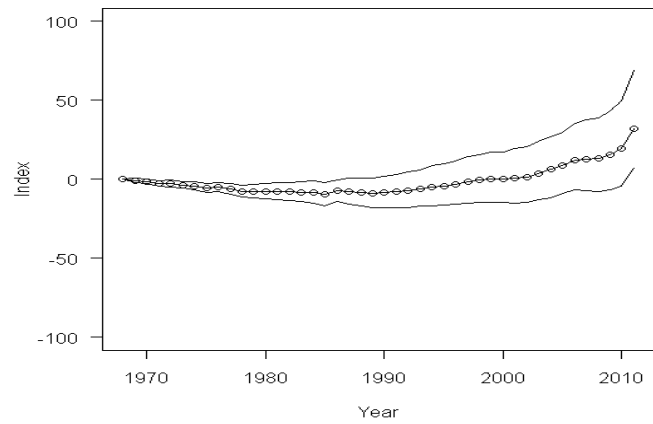
- 56.1

Locale Map For Group

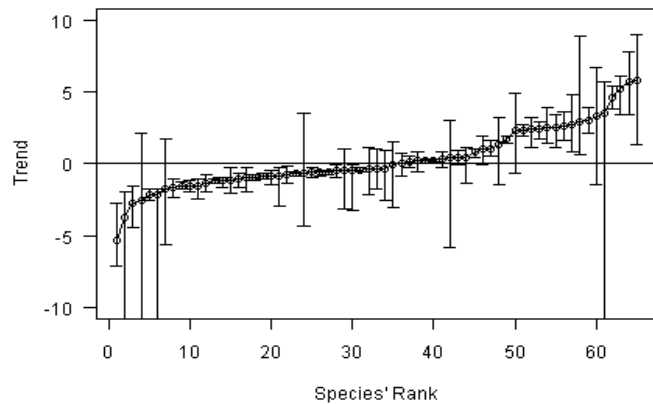


Population Change Summary			
N of Species = 65			
Group	Time Period	Total % Change	95% Credible Interval
Generalists	1968-2011	32.2	6.9, 69.1

Composite Change for Species Group



Long-term Population Trends (1966-2011)





Species Group: *Generalists*



Long-term Annual Population Change (1966-2011)

Species	N	%/Yr	2.5%-97.5%	Species	N	%/Yr	2.5%-97.5%
Gadwall	727	3.1	2.1, 4.0	Ring-billed Gull	1231	3.0	0.7, 9.0
American Wigeon	574	-2.8	-4.6, -1.6	California Gull	398	-1.8	-5.8, 1.8
Mallard	3233	0.2	-0.5, 0.9	Herring Gull	648	-3.8	-23.0, -2.0
Green-winged Teal	786	-0.3	-2.6, 1.0	Great Black-backed Gull	153	-2.6	-15.5, 2.2
American White Pelican	398	5.9	1.3, 9.1	Caspian Tern	222	0.4	-6.0, 3.0
Double-crested Cormorant	1130	3.6	-11.7, 5.8	Common Tern	266	-0.7	-4.4, 3.6
Great Blue Heron	3421	0.8	0.5, 1.1	Mourning Dove	4213	-0.4	-0.6, -0.3
Great Egret	1007	2.5	1.2, 3.5	Barn Owl	179	2.4	-0.6, 5.0
Snowy Egret	498	1.4	-1.5, 3.2	Great Horned Owl	2492	-0.8	-3.0, -0.3
Little Blue Heron	665	-1.2	-2.1, -0.3	Common Nighthawk	2486	-2.2	-11.1, -1.7
Tricolored Heron	188	-0.4	-1.8, 1.0	Belted Kingfisher	2984	-1.6	-2.0, -1.2
Cattle Egret	844	-1.0	-2.0, -0.3	Black Phoebe	246	2.7	1.7, 3.6
Green Heron	2238	-1.6	-1.8, -1.3	Say's Phoebe	976	1.0	-38.7, 1.6
Black-crowned Night-Heron	785	-0.4	-3.2, 1.0	Black-billed Magpie	1052	-0.6	-1.0, -0.3
Yellow-cr night-Heron	399	-0.4	-2.2, 1.1	American Crow	3970	0.2	0.1, 0.4
White Ibis	306	5.8	3.5, 8.0	Fish Crow	801	0.4	-0.1, 0.9
Black Vulture	959	4.8	3.9, 5.5	Common Raven	2352	2.5	1.8, 3.0
Turkey Vulture	3235	2.4	2.0, 2.8	Purple Martin	2308	-0.4	-3.3, 0.0
Osprey	988	2.5	1.1, 3.3	Tree Swallow	2944	-1.1	-1.7, -0.7
Bald Eagle	757	5.4	4.1, 6.7	N Rough-winged Swallow	3117	-0.4	-1.0, 0.0
Northern Harrier	1838	-0.9	-1.5, -0.4	Bank Swallow	1818	-5.5	-7.3, -2.8
Red-tailed Hawk	4001	1.7	1.5, 1.9	Cliff Swallow	2889	0.4	-1.4, 1.2
Golden Eagle	662	0.0	-0.9, 0.7	Barn Swallow	4140	-1.2	-1.4, -1.0
American Kestrel	3418	-1.5	-2.5, -1.1	American Robin	4026	0.2	0.1, 0.3
Peregrine Falcon	142	3.3	-1.5, 6.8	Northern Mockingbird	2665	-0.6	-0.8, -0.4
Prairie Falcon	550	1.0	-0.1, 2.0	Common Yellowthroat	3683	-1.0	-1.2, -0.8
Sandhill Crane	674	5.3	3.5, 6.3	Song Sparrow	3228	-0.7	-0.9, -0.5
Killdeer	4060	-1.2	-1.6, -1.0	White-crowned Sparrow	508	-0.8	-1.4, -0.2
Black-necked Stilt	281	2.8	0.9, 4.9	Red-winged Blackbird	4223	-0.9	-1.1, -0.7
American Avocet	461	-0.1	-3.2, 1.5	Brewer's Blackbird	1604	-2.2	-2.6, -1.8
Spotted Sandpiper	1816	-1.4	-2.0, -0.8	Great-tailed Grackle	505	2.5	1.4, 4.0
Wilson's Snipe	1714	0.3	-0.2, 0.9	Brown-headed Cowbird	4273	-0.6	-0.9, -0.4

Downloaded from https://academic.oup.com/condor/advance-article-abstract/doi/10.1093/condor/ndz011/5366777 by guest on 26 March 2023

 **Species Group: *Generalists*** **Long-term Annual Population Change (1966-2011)**

Species	N	%/Yr	2.5%-97.5%
House Finch	2989	0.2	-0.3, 0.6



Species Group: *Urban/Suburban Birds*



General Information

Primary Bird Conservation Regions

- Species in this secondary grouping occur in all Bird Conservation Regions

Total Number of Species

- 135

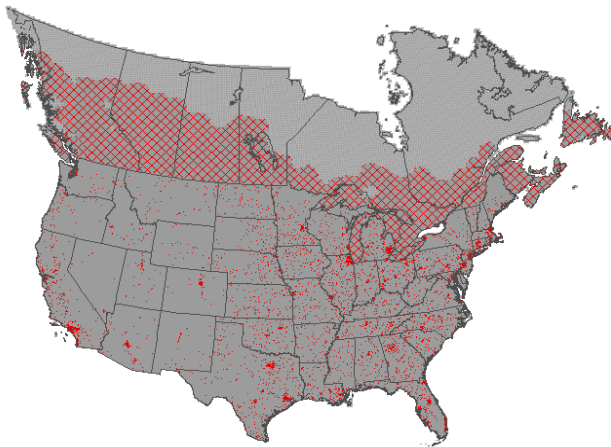
Percentage of Species with BBS Results

- 87.4

Average Percentage of Range in BBS Survey Area

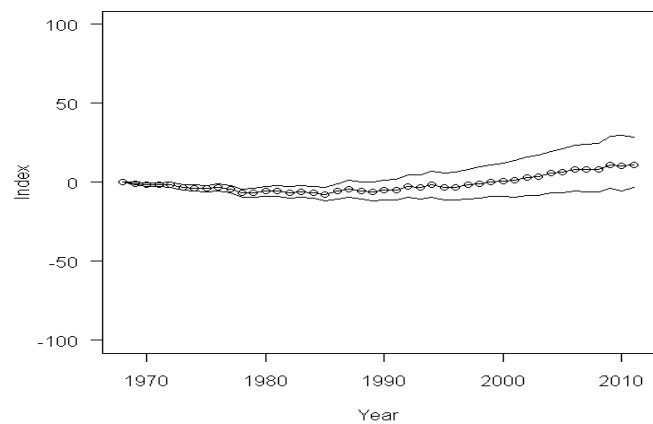
- 64.7

Locale Map For Group

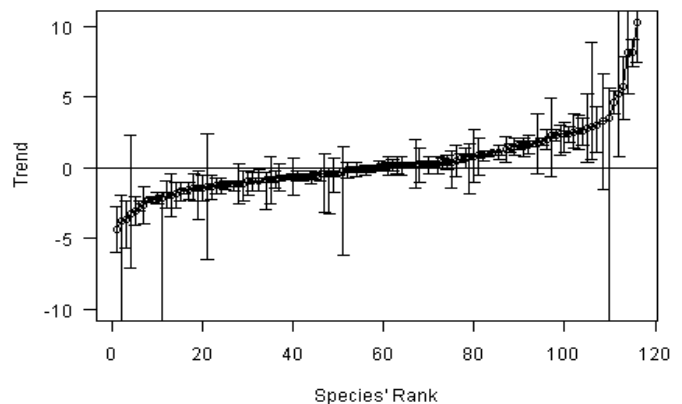


Population Change Summary			
N of Species = 117			
Group	Time Period	Total % Change	95% Credible Interval
Urban/Suburban Birds	1968-2011	10.8	-2.9, 28.4

Composite Change for Species Group



Long-term Population Trends (1966-2011)





Species Group: *Urban/Suburban Birds*



Long-term Annual Population Change (1966-2011)

Species	N	%/Yr	2.5%-97.5%	Species	N	%/Yr	2.5%-97.5%
Mallard	3233	0.2	-0.5, 0.9	Great Horned Owl	2492	-0.8	-3.0, -0.3
Wild Turkey	2076	8.4	7.3, 9.2	Burrowing Owl	578	-1.1	-2.4, -0.2
Scaled Quail	208	-3.1	-4.2, -2.1	Barred Owl	1467	1.7	0.8, 2.2
California Quail	429	1.7	1.0, 2.4	Common Nighthawk	2486	-2.2	-11.1, -1.7
Gambel's Quail	147	-0.2	-6.3, 1.5	Chimney Swift	2522	-2.3	-2.5, -2.1
Brown Pelican	62	5.4	0.8, 11.7	Ruby-throated Hummingbird	2270	1.9	1.6, 2.2
Double-crested Cormorant	1130	3.6	-11.7, 5.8	Black-chinned Hummingbird	423	1.3	0.4, 2.2
Cattle Egret	844	-1.0	-2.0, -0.3	Anna's Hummingbird	215	2.0	1.3, 2.8
Black-crowned Night-Heron	785	-0.4	-3.2, 1.0	Broad-tailed Hummingbird	293	-1.7	-2.4, -1.0
White Ibis	306	5.8	3.5, 8.0	Allen's Hummingbird	55	-4.5	-6.1, -2.8
Black Vulture	959	4.8	3.9, 5.5	Red-headed Woodpecker	1797	-2.8	-3.1, -2.4
Turkey Vulture	3235	2.4	2.0, 2.8	Acorn Woodpecker	202	0.2	-0.4, 0.8
Osprey	988	2.5	1.1, 3.3	Gila Woodpecker	44	-1.1	-2.6, 0.3
Mississippi Kite	429	0.5	-0.6, 1.6	Golden-fronted Woodpecker	104	-0.9	-1.7, -0.2
Cooper's Hawk	1929	2.4	0.9, 3.0	Red-bellied Woodpecker	1996	1.1	0.9, 1.2
Harris's Hawk	74	-1.9	-3.5, -0.4	Yellow-bellied Sapsucker	1044	0.8	-1.9, 1.8
Red-tailed Hawk	4001	1.7	1.5, 1.9	Downy Woodpecker	3379	0.1	-0.1, 0.3
Merlin	547	3.1	1.1, 4.4	Hairy Woodpecker	3225	0.9	0.5, 1.3
Peregrine Falcon	142	3.3	-1.5, 6.8	Northern Flicker	4018	-1.5	-1.7, -1.2
Killdeer	4060	-1.2	-1.6, -1.0	Pileated Woodpecker	2564	1.5	1.1, 1.8
Laughing Gull	202	2.8	0.4, 5.3	Black Phoebe	246	2.7	1.7, 3.6
Ring-billed Gull	1231	3.0	0.7, 9.0	Eastern Phoebe	2491	0.3	-0.5, 0.8
Herring Gull	648	-3.8	-23.0, -2.0	Say's Phoebe	976	1.0	-38.7, 1.6
Least Tern	156	-3.3	-7.2, 2.3	Great Crested Flycatcher	2593	0.0	-0.2, 0.1
Band-tailed Pigeon	322	-2.4	-6.2, -1.1	Couch's Kingbird	39	10.6	7.7, 13.2
White-winged Dove	283	0.9	-0.5, 2.2	Western Kingbird	1580	0.4	0.0, 0.7
Mourning Dove	4213	-0.4	-0.6, -0.3	Steller's Jay	619	-0.1	-0.5, 0.2
Inca Dove	192	2.6	1.3, 3.8	Blue Jay	2979	-0.7	-0.8, -0.6
Greater Roadrunner	470	0.2	-0.6, 0.8	Green Jay	29	8.4	5.3, 12.3
Barn Owl	179	2.4	-0.6, 5.0	Western Scrub-Jay	482	-0.2	-0.7, 0.4
Western Screech-Owl	106	-1.4	-6.6, 2.5	Black-billed Magpie	1052	-0.6	-1.0, -0.3
Eastern Screech-Owl	623	-1.4	-3.7, -0.3	American Crow	3970	0.2	0.1, 0.4

Downloaded from https://academic.oup.com/condor/advance-article-abstract/doi/10.1093/condor/ndz001/5366777 by guest on 26 March 2023



Species Group: *Urban/Suburban Birds*



Long-term Annual Population Change (1966-2011)

Species	N	%/Yr	2.5%-97.5%	Species	N	%/Yr	2.5%-97.5%
Northwestern Crow	49	0.2	-1.0, 1.4	Abert's Towhee	34	1.8	-0.4, 4.0
Fish Crow	801	0.4	-0.1, 0.9	Chipping Sparrow	3654	-0.5	-0.9, -0.3
Common Raven	2352	2.5	1.8, 3.0	Song Sparrow	3228	-0.7	-0.9, -0.5
Purple Martin	2308	-0.4	-3.3, 0.0	White-crowned Sparrow	508	-0.8	-1.4, -0.2
N Rough-winged Swallow	3117	-0.4	-1.0, 0.0	Dark-eyed Junco	1568	-1.3	-1.9, -0.8
Cliff Swallow	2889	0.4	-1.4, 1.2	Northern Cardinal	2389	0.3	0.2, 0.4
Barn Swallow	4140	-1.2	-1.4, -1.0	Red-winged Blackbird	4223	-0.9	-1.1, -0.7
Carolina Chickadee	1304	-0.1	-0.3, 0.1	Brewer's Blackbird	1604	-2.2	-2.6, -1.8
Black-capped Chickadee	2268	0.7	0.4, 1.0	Common Grackle	3308	-1.7	-1.8, -1.5
Mountain Chickadee	569	-1.3	-1.9, -0.8	Boat-tailed Grackle	184	-0.7	-1.7, 0.3
Chestnut-backed Chickadee	233	-1.4	-2.4, -0.5	Great-tailed Grackle	505	2.5	1.4, 4.0
Tufted & Bl-cr Titmouse	1983	1.1	0.9, 1.3	Bronzed Cowbird	116	0.2	-1.5, 2.1
Verdin	193	-2.7	-4.1, -1.4	Brown-headed Cowbird	4273	-0.6	-0.9, -0.4
Bushtit	468	-0.7	-2.0, 0.7	Hooded Oriole	138	0.9	-1.1, 2.8
Red-breasted Nuthatch	1679	1.5	0.9, 2.1	Bullock's Oriole	1044	-0.6	-1.1, -0.2
White-breasted Nuthatch	2603	1.7	1.3, 2.0	Baltimore Oriole	2206	-1.2	-1.6, -1.0
Pygmy Nuthatch	246	-0.8	-2.6, 0.8	Purple Finch	1381	-1.5	-2.2, -1.0
Cactus Wren	243	-1.9	-2.9, -1.0	House Finch	2989	0.2	-0.3, 0.6
Carolina Wren	1731	1.1	0.8, 1.2	Pine Siskin	1387	-3.8	-5.8, -2.4
Bewick's Wren	938	-1.0	-1.6, -0.3	Lesser Goldfinch	544	0.7	0.0, 1.5
House Wren	2935	0.3	0.0, 0.4	American Goldfinch	3285	-0.1	-0.3, 0.1
American Dipper	216	-0.4	-1.7, 0.7				
Wood Thrush	2115	-2.3	-2.4, -2.1				
American Robin	4026	0.2	0.1, 0.3				
Gray Catbird	2844	-0.1	-0.2, 0.0				
Northern Mockingbird	2665	-0.6	-0.8, -0.4				
Curve-billed Thrasher	223	-1.4	-2.4, -0.5				
California Thrasher	100	-1.9	-2.9, -1.0				
Cedar Waxwing	2664	0.3	-0.5, 0.8				
Spotted Towhee	980	0.1	-0.3, 0.5				
Canyon Towhee	174	-1.4	-2.3, -0.5				
California Towhee	149	-0.1	-0.6, 0.4				

Species Group: *Wetland Birds*

General Information

Primary Bird Conservation Regions

- Species in this secondary grouping occur in all Bird Conservation Regions

Total Number of Species

- 169

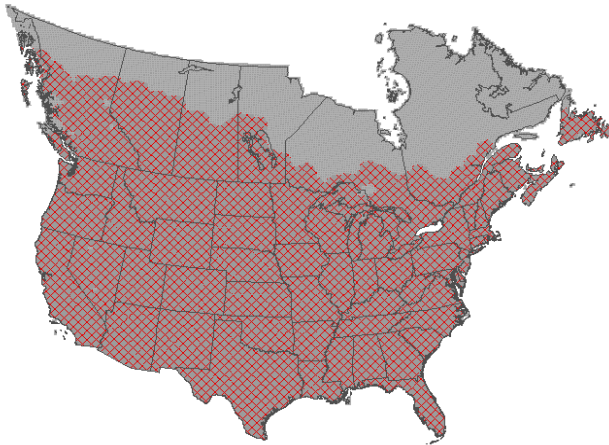
Percentage of Species with BBS Results

- 60.9

Average Percentage of Range in BBS Survey Area

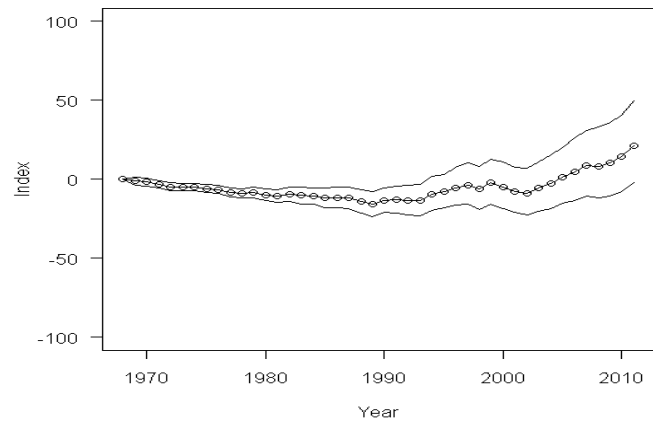
- 52.9

Locale Map For Group

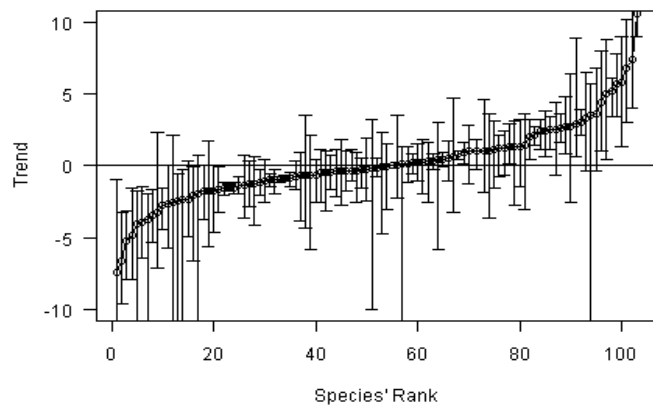


Population Change Summary			
N of Species = 103			
Group	Time Period	Total % Change	95% Credible Interval
Wetland Birds	1968-2011	21.4	-2.0, 49.6

Composite Change for Species Group



Long-term Population Trends (1966-2011)





Species Group: *Wetland Birds*



Long-term Annual Population Change (1966-2011)

Species	N	%/Yr	2.5%-97.5%	Species	N	%/Yr	2.5%-97.5%
Fulvous Whistling-Duck	51	0.6	-3.3, 4.8	Anhinga	222	1.3	0.1, 2.9
Canada Goose	2717	10.8	9.1, 14.1	American Bittern	1108	-0.6	-2.6, 0.4
Wood Duck	2191	2.2	1.5, 2.8	Least Bittern	160	-0.3	-2.5, 2.0
Gadwall	727	3.1	2.1, 4.0	Great Blue Heron	3421	0.8	0.5, 1.1
American Wigeon	574	-2.8	-4.6, -1.6	Great Egret	1007	2.5	1.2, 3.5
American Black Duck	559	-0.5	-2.6, 1.1	Snowy Egret	498	1.4	-1.5, 3.2
Mallard	3233	0.2	-0.5, 0.9	Little Blue Heron	665	-1.2	-2.1, -0.3
Mottled Duck	118	-3.5	-5.4, -1.7	Tricolored Heron	188	-0.4	-1.8, 1.0
Blue-winged Teal	1241	0.1	-18.1, 1.4	Cattle Egret	844	-1.0	-2.0, -0.3
Cinnamon Teal	478	-2.5	-20.7, -0.6	Green Heron	2238	-1.6	-1.8, -1.3
Northern Shoveler	667	2.5	0.7, 3.9	Black-crowned Night-Heron	785	-0.4	-3.2, 1.0
Northern Pintail	740	-1.3	-4.2, 0.6	Yellow-cr night-Heron	399	-0.4	-2.2, 1.1
Green-winged Teal	786	-0.3	-2.6, 1.0	White Ibis	306	5.8	3.5, 8.0
Canvasback	294	1.1	-3.7, 3.7	Glossy Ibis	96	3.4	-0.4, 6.6
Redhead	442	1.2	-1.6, 3.2	White-faced Ibis	172	5.1	0.4, 9.0
Ring-necked Duck	472	2.8	-2.6, 6.5	Roseate Spoonbill	67	7.6	4.1, 11.1
Lesser Scaup	493	-2.1	-6.8, -0.1	Wood Stork	147	1.5	-3.1, 3.7
Bufflehead	240	2.6	-0.7, 4.5	Osprey	988	2.5	1.1, 3.3
Common Goldeneye	331	1.0	-1.3, 2.9	Bald Eagle	757	5.4	4.1, 6.7
Barrow's Goldeneye	97	-1.4	-3.8, 0.8	Northern Harrier	1838	-0.9	-1.5, -0.4
Hooded Merganser	413	4.5	1.1, 8.2	Clapper Rail	75	-0.4	-2.8, 1.9
Common Merganser	855	-1.8	-4.7, 0.0	King Rail	90	-4.0	-6.6, -1.5
Red-breasted Merganser	79	-7.6	-30.9, -1.0	Virginia Rail	392	1.3	-2.8, 3.2
Ruddy Duck	456	1.0	-1.9, 4.7	Sora	989	0.5	-1.1, 1.8
Common Loon	831	0.9	-0.3, 1.9	Purple Gallinule	55	-2.7	-5.8, 0.0
Pied-billed Grebe	1070	0.3	-2.6, 1.7	Common Gallinule	265	-1.3	-2.9, 0.3
Horned Grebe	182	-1.8	-3.8, 0.0	American Coot	1026	0.2	-2.0, 1.8
Red-necked Grebe	189	0.2	-1.1, 1.5	Sandhill Crane	674	5.3	3.5, 6.3
Eared Grebe	303	-0.2	-10.2, 3.3	Black-necked Stilt	281	2.8	0.9, 4.9
Western & Clark's Grebe	245	-0.1	-4.9, 2.4	American Avocet	461	-0.1	-3.2, 1.5
American White Pelican	398	5.9	1.3, 9.1	Spotted Sandpiper	1816	-1.4	-2.0, -0.8
Double-crested Cormorant	1130	3.6	-11.7, 5.8	Solitary Sandpiper	102	-0.7	-6.0, 2.1

Downloaded from https://academic.oup.com/ajph/article/103/11/1998/2673931 by guest on 26 March 2023



Species Group: *Wetland Birds*



Long-term Annual Population Change (1966-2011)

Species	N	%/Yr	2.5%-97.5%
Greater Yellowlegs	105	3.7	-0.4, 6.9
Willet	496	-0.4	-1.1, 1.2
Lesser Yellowlegs	134	-5.3	-8.1, -3.3
Marbled Godwit	332	-0.2	-0.8, 0.5
Wilson's Snipe	1714	0.3	-0.2, 0.9
Wilson's Phalarope	573	-0.7	-3.9, 0.9
Franklin's Gull	349	-4.2	-12.1, -1.8
Ring-billed Gull	1231	3.0	0.7, 9.0
California Gull	398	-1.8	-5.8, 1.8
Herring Gull	648	-3.8	-23.0, -2.0
Great Black-backed Gull	153	-2.6	-15.5, 2.2
Least Tern	156	-3.3	-7.2, 2.3
Caspian Tern	222	0.4	-6.0, 3.0
Black Tern	544	-2.7	-26.9, -0.8
Common Tern	266	-0.7	-4.4, 3.6
Forster's Tern	279	-2.0	-12.1, 0.8
Black Swift	122	-6.8	-9.8, -3.3
Belted Kingfisher	2984	-1.6	-2.0, -1.2
Willow Flycatcher	1784	-1.6	-2.1, -1.2
Black Phoebe	246	2.7	1.7, 3.6
Vermilion Flycatcher	119	0.2	-1.2, 1.4
Sedge Wren	661	1.2	-0.8, 2.2
Marsh Wren	735	2.1	0.4, 3.3
American Dipper	216	-0.4	-1.7, 0.7
Palm Warbler	216	-2.4	-5.1, 0.4
Prothonotary Warbler	718	-1.0	-1.5, -0.5
Swainson's Warbler	268	1.2	-0.7, 2.5
Northern Waterthrush	1006	0.9	0.1, 1.7
Louisiana Waterthrush	912	0.5	0.0, 0.9
Common Yellowthroat	3683	-1.0	-1.2, -0.8
Le Conte's Sparrow	363	-1.7	-3.3, -0.1
Lincoln's Sparrow	844	-1.1	-2.6, 0.5

Species	N	%/Yr	2.5%-97.5%
Swamp Sparrow	1195	1.0	-0.2, 1.9
Red-winged Blackbird	4223	-0.9	-1.1, -0.7
Tricolored Blackbird	80	2.9	-0.2, 5.3
Yellow-headed Blackbird	1024	-0.3	-1.6, 0.6
Rusty Blackbird	231	-4.9	-8.1, -1.6
Boat-tailed Grackle	184	-0.7	-1.7, 0.3
Black-bell Whistling-Duck	123	6.9	3.1, 10.4



Species Group: *Marsh Birds*



General Information

Primary Bird Conservation Regions

- Marsh birds are found in all Bird Conservation Regions

Total Number of Species

- 36

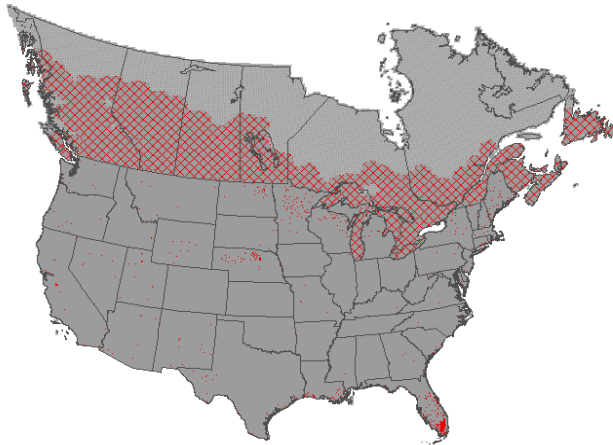
Percentage of Species with BBS Results

- 77.8

Average Percentage of Range in BBS Survey Area

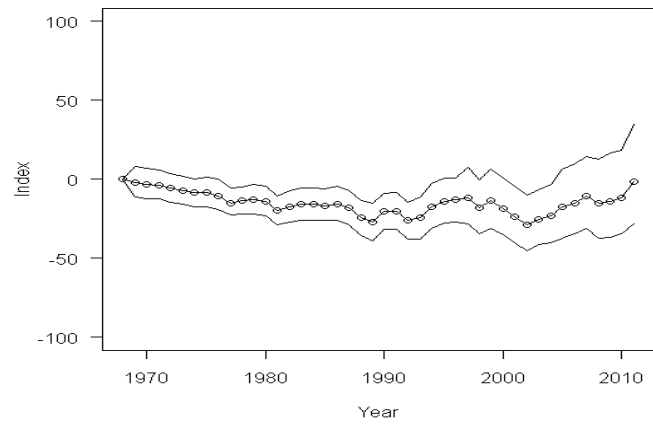
- 58.1

Locale Map For Group

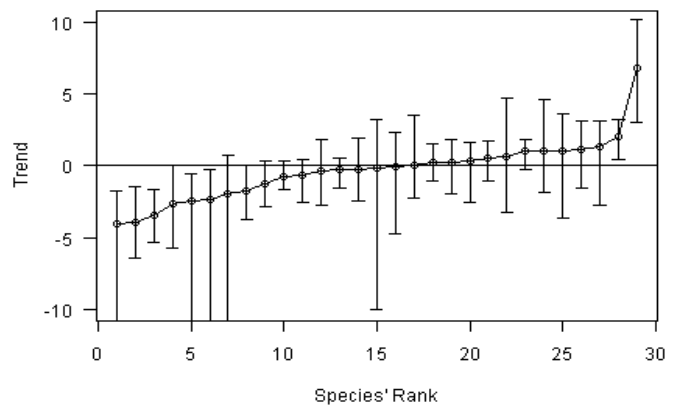


Population Change Summary			
N of Species = 29			
Group	Time Period	Total % Change	95% Credible Interval
Marsh Birds	1968-2011	-1.5	-28.0, 34.7

Composite Change for Species Group



Long-term Population Trends (1966-2011)





Species Group: *Marsh Birds*



Long-term Annual Population Change (1966-2011)

Species	N	%/Yr	2.5%-97.5%
Fulvous Whistling-Duck	51	0.6	-3.3, 4.8
Mottled Duck	118	-3.5	-5.4, -1.7
Cinnamon Teal	478	-2.5	-20.7, -0.6
Canvasback	294	1.1	-3.7, 3.7
Redhead	442	1.2	-1.6, 3.2
Ruddy Duck	456	1.0	-1.9, 4.7
Pied-billed Grebe	1070	0.3	-2.6, 1.7
Horned Grebe	182	-1.8	-3.8, 0.0
Red-necked Grebe	189	0.2	-1.1, 1.5
Eared Grebe	303	-0.2	-10.2, 3.3
Western & Clark's Grebe	245	-0.1	-4.9, 2.4
American Bittern	1108	-0.6	-2.6, 0.4
Least Bittern	160	-0.3	-2.5, 2.0
Clapper Rail	75	-0.4	-2.8, 1.9
King Rail	90	-4.0	-6.6, -1.5
Virginia Rail	392	1.3	-2.8, 3.2
Sora	989	0.5	-1.1, 1.8
Purple Gallinule	55	-2.7	-5.8, 0.0
Common Gallinule	265	-1.3	-2.9, 0.3
American Coot	1026	0.2	-2.0, 1.8
Franklin's Gull	349	-4.2	-12.1, -1.8
Black Tern	544	-2.7	-26.9, -0.8
Forster's Tern	279	-2.0	-12.1, 0.8
Marsh Wren	735	2.1	0.4, 3.3
Swamp Sparrow	1195	1.0	-0.2, 1.9
Tricolored Blackbird	80	2.9	-0.2, 5.3
Yellow-headed Blackbird	1024	-0.3	-1.6, 0.6
Boat-tailed Grackle	184	-0.7	-1.7, 0.3
Black-bell Whistling-Duck	123	6.9	3.1, 10.4



Species Group: *Exotic (Nonnative) Birds*



General Information

Primary Bird Conservation Regions

- Exotic species are found in all Bird Conservation Regions

Total Number of Species

- 17

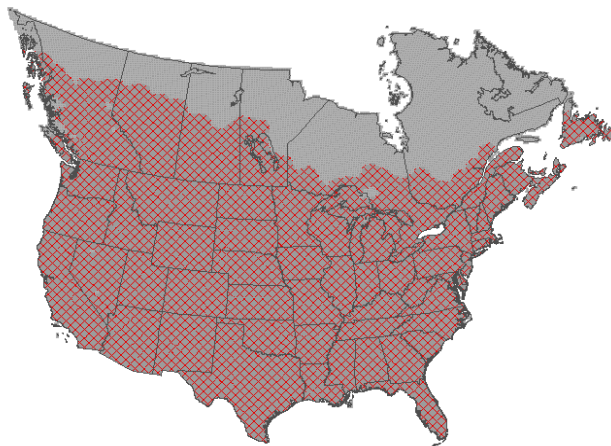
Percentage of Species with BBS Results

- 52.9

Average Percentage of Range in BBS Survey Area

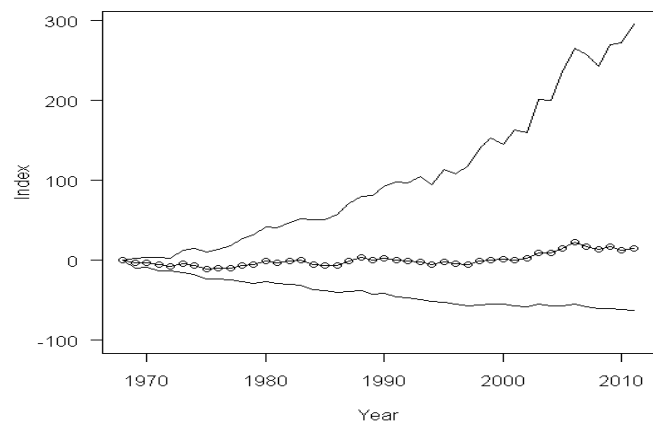
- 81.9

Locale Map For Group

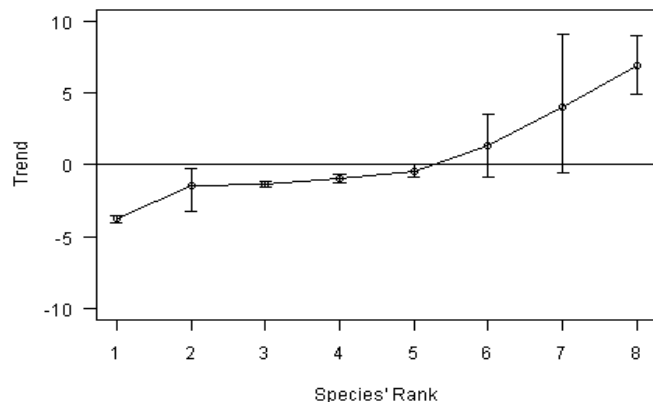


Population Change Summary			
N of Species = 8			
Group	Time Period	Total % Change	95% Credible Interval
Exotic (Nonnative) Birds	1968-2011	15.0	-62.7, 295.4

Composite Change for Species Group



Long-term Population Trends (1966-2011)





Species Group: *Exotic (Nonnative) Birds*



Long-term Annual Population Change (1966-2011)

Species	N	%/Yr	2.5%-97.5%
Mute Swan	98	4.1	-0.6, 9.3
Chukar	169	1.3	-0.9, 3.6
Gray Partridge	444	-1.5	-3.4, -0.3
Ring-necked Pheasant	1835	-0.4	-0.9, 0.0
Rock Pigeon	3300	-1.0	-1.3, -0.6
European Starling	4066	-1.4	-1.6, -1.2
House Sparrow	3699	-3.8	-4.1, -3.7
Eurasian Tree Sparrow	38	7.1	5.0, 9.2



Species Group: *Permanent Resident Birds*



General Information

Primary Bird Conservation Regions

- Species in this secondary grouping occur in all Bird Conservation Regions

Total Number of Species

- 162

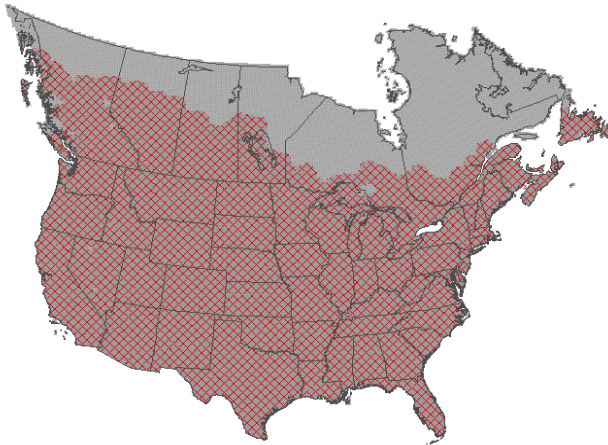
Percentage of Species with BBS Results

- 59.3

Average Percentage of Range in BBS Survey Area

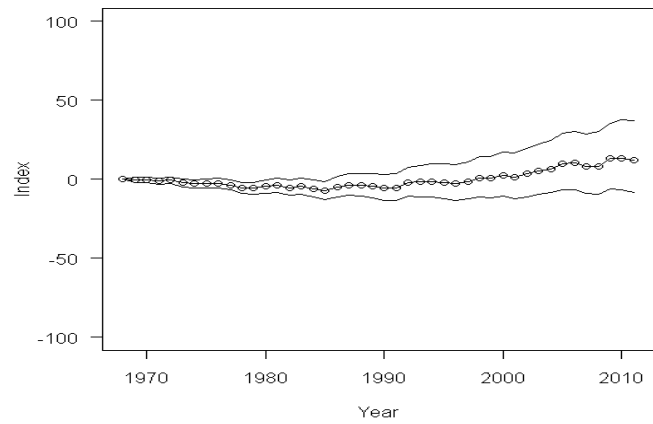
- 60.0

Locale Map For Group

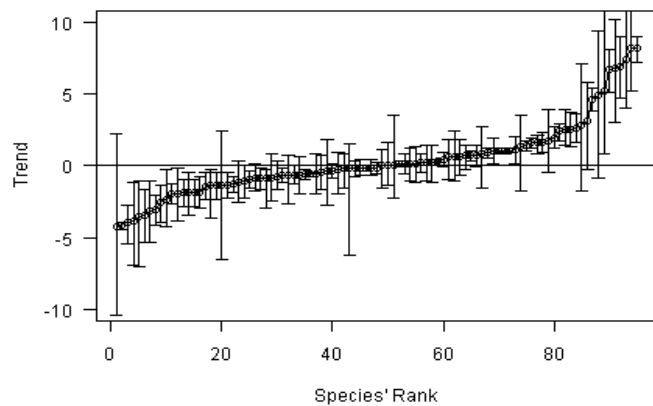


Population Change Summary			
N of Species = 95			
Group	Time Period	Total % Change	95% Credible Interval
Permanent Resident Birds	1968-2011	12.1	-8.1, 37.4

Composite Change for Species Group



Long-term Population Trends (1966-2011)





Species Group: *Permanent Resident Birds*



Long-term Annual Population Change (1966-2011)

Species	N	%/Yr	2.5%-97.5%	Species	N	%/Yr	2.5%-97.5%
Mottled Duck	118	-3.5	-5.4, -1.7	Ladder-backed Woodpecker	314	-0.2	-0.7, 0.4
Ruffed Grouse	1199	0.6	-0.9, 1.9	Nuttall's Woodpecker	124	0.7	-0.2, 1.5
Greater Sage-Grouse	155	-3.6	-7.2, -1.1	Downy Woodpecker	3379	0.1	-0.1, 0.3
Sharp-tailed Grouse	306	-0.7	-2.7, 0.8	Hairy Woodpecker	3225	0.9	0.5, 1.3
Greater Prairie-Chicken	100	2.9	-1.8, 7.2	Red-cockaded Woodpecker	62	-4.0	-7.0, -1.1
Wild Turkey	2076	8.4	7.3, 9.2	White-headed Woodpecker	118	1.1	0.1, 2.1
Mountain Quail	182	0.3	-1.1, 1.5	Am. Three-toed Woodpecker	145	3.2	-0.2, 5.9
Scaled Quail	208	-3.1	-4.2, -2.1	Black-backed Woodpecker	263	1.4	-1.8, 3.5
California Quail	429	1.7	1.0, 2.4	Gilded Flicker	34	-2.4	-4.4, -0.3
Gambel's Quail	147	-0.2	-6.3, 1.5	Pileated Woodpecker	2564	1.5	1.1, 1.8
Northern Bobwhite	1964	-4.2	-4.5, -4.0	Black Phoebe	246	2.7	1.7, 3.6
Brown Pelican	62	5.4	0.8, 11.7	Vermilion Flycatcher	119	0.2	-1.2, 1.4
Pelagic Cormorant	20	-4.3	-10.6, 2.3	Hutton's Vireo	223	1.0	0.1, 2.0
Roseate Spoonbill	67	7.6	4.1, 11.1	Gray Jay	719	-0.2	-1.6, 0.9
Black Vulture	959	4.8	3.9, 5.5	Steller's Jay	619	-0.1	-0.5, 0.2
White-tailed Kite	132	-0.6	-2.0, 0.8	Green Jay	29	8.4	5.3, 12.3
Harris's Hawk	74	-1.9	-3.5, -0.4	Western Scrub-Jay	482	-0.2	-0.7, 0.4
Crested Caracara	102	6.8	5.2, 8.3	Pinyon Jay	286	-4.1	-5.6, -2.8
Clapper Rail	75	-0.4	-2.8, 1.9	Clark's Nutcracker	400	0.0	-1.6, 1.1
Inca Dove	192	2.6	1.3, 3.8	Black-billed Magpie	1052	-0.6	-1.0, -0.3
Common Ground-Dove	324	-0.7	-1.3, 0.0	Yellow-billed Magpie	46	-1.9	-3.0, -0.8
Greater Roadrunner	470	0.2	-0.6, 0.8	Northwestern Crow	49	0.2	-1.0, 1.4
Western Screech-Owl	106	-1.4	-6.6, 2.5	Fish Crow	801	0.4	-0.1, 0.9
Eastern Screech-Owl	623	-1.4	-3.7, -0.3	Chihuahuan Raven	173	0.2	-1.0, 1.3
Great Horned Owl	2492	-0.8	-3.0, -0.3	Common Raven	2352	2.5	1.8, 3.0
Northern Pygmy-Owl	226	0.9	-1.6, 2.7	Carolina Chickadee	1304	-0.1	-0.3, 0.1
Barred Owl	1467	1.7	0.8, 2.2	Black-capped Chickadee	2268	0.7	0.4, 1.0
Anna's Hummingbird	215	2.0	1.3, 2.8	Mountain Chickadee	569	-1.3	-1.9, -0.8
Acorn Woodpecker	202	0.2	-0.4, 0.8	Chestnut-backed Chickadee	233	-1.4	-2.4, -0.5
Gila Woodpecker	44	-1.1	-2.6, 0.3	Boreal Chickadee	371	0.7	-0.6, 1.8
Golden-fronted Woodpecker	104	-0.9	-1.7, -0.2	Oak Titmouse	149	-2.0	-2.8, -1.3
Red-bellied Woodpecker	1996	1.1	0.9, 1.2	Juniper Titmouse	173	0.0	-1.4, 1.7

Downloaded from https://academic.oup.com/condor/advance-article-abstract/doi/10.1093/condor/ndz011/5364767 by guest on 26 March 2023



Species Group: *Permanent Resident Birds*



Long-term Annual Population Change (1966-2011)

Species	N	%/Yr	2.5%-97.5%
Tufted & Bl-cr Titmouse	1983	1.1	0.9, 1.3
Verdin	193	-2.7	-4.1, -1.4
Bushtit	468	-0.7	-2.0, 0.7
White-breasted Nuthatch	2603	1.7	1.3, 2.0
Pygmy Nuthatch	246	-0.8	-2.6, 0.8
Brown-headed Nuthatch	487	-0.3	-0.9, 0.2
Cactus Wren	243	-1.9	-2.9, -1.0
Canyon Wren	345	-0.3	-2.0, 1.0
Carolina Wren	1731	1.1	0.8, 1.2
Bewick's Wren	938	-1.0	-1.6, -0.3
American Dipper	216	-0.4	-1.7, 0.7
Black-tailed Gnatcatcher	122	-2.0	-4.0, -0.2
Wrentit	164	-0.7	-1.2, -0.2
Northern Mockingbird	2665	-0.6	-0.8, -0.4
Long-billed Thrasher	40	7.0	4.8, 9.2
Curve-billed Thrasher	223	-1.4	-2.4, -0.5
California Thrasher	100	-1.9	-2.9, -1.0
Crissal Thrasher	87	0.7	-1.1, 2.5
Le Conte's Thrasher	53	-3.2	-5.4, -1.1
Canyon Towhee	174	-1.4	-2.3, -0.5
California Towhee	149	-0.1	-0.6, 0.4
Abert's Towhee	34	1.8	-0.4, 4.0
Rufous-crowned Sparrow	187	-1.1	-2.3, 0.0
Seaside Sparrow	37	5.0	-0.9, 9.6
Northern Cardinal	2389	0.3	0.2, 0.4
Pyrrhuloxia	133	-0.9	-1.8, 0.1
Tricolored Blackbird	80	2.9	-0.2, 5.3
Boat-tailed Grackle	184	-0.7	-1.7, 0.3
Great-tailed Grackle	505	2.5	1.4, 4.0
Lesser Goldfinch	544	0.7	0.0, 1.5
Black-bell Whistling-Duck	123	6.9	3.1, 10.4



Species Group: *Temperate Migrant Birds*



General Information

Primary Bird Conservation Regions

- Species in this secondary grouping occur in all Bird Conservation Regions

Total Number of Species

- 291

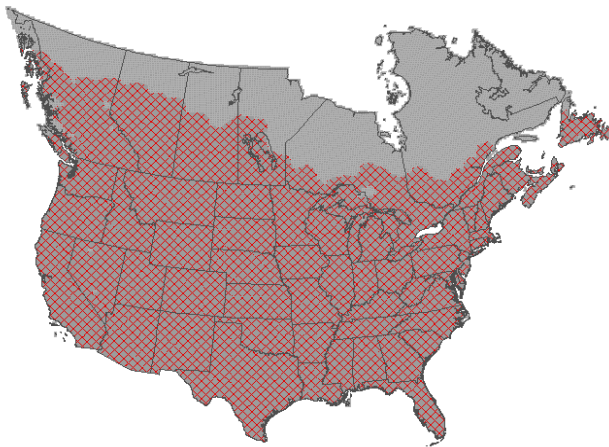
Percentage of Species with BBS Results

- 62.5

Average Percentage of Range in BBS Survey Area

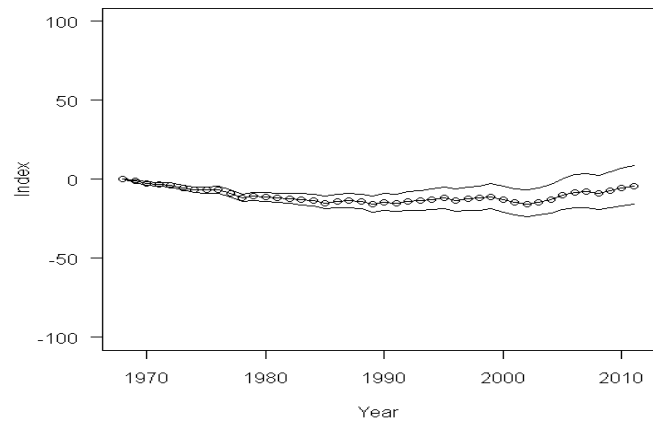
- 65.1

Locale Map For Group

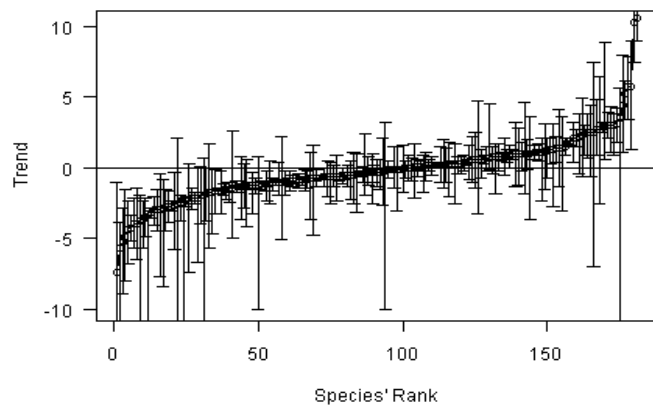


Population Change Summary			
N of Species = 181			
Group	Time Period	Total % Change	95% Credible Interval
Temperate Migrant Birds	1968-2011	-4.1	-15.4, 8.9

Composite Change for Species Group



Long-term Population Trends (1966-2011)





Species Group: *Temperate Migrant Birds*



Long-term Annual Population Change (1966-2011)

Species	N	%/Yr	2.5%-97.5%	Species	N	%/Yr	2.5%-97.5%
Fulvous Whistling-Duck	51	0.6	-3.3, 4.8	White Ibis	306	5.8	3.5, 8.0
Canada Goose	2717	10.8	9.1, 14.1	Wood Stork	147	1.5	-3.1, 3.7
Wood Duck	2191	2.2	1.5, 2.8	Bald Eagle	757	5.4	4.1, 6.7
Gadwall	727	3.1	2.1, 4.0	Northern Harrier	1838	-0.9	-1.5, -0.4
American Wigeon	574	-2.8	-4.6, -1.6	Sharp-shinned Hawk	1287	1.2	-2.4, 2.2
American Black Duck	559	-0.5	-2.6, 1.1	Cooper's Hawk	1929	2.4	0.9, 3.0
Mallard	3233	0.2	-0.5, 0.9	Northern Goshawk	418	0.6	-1.4, 2.5
Northern Shoveler	667	2.5	0.7, 3.9	Red-shouldered Hawk	1556	2.9	2.6, 3.3
Northern Pintail	740	-1.3	-4.2, 0.6	Red-tailed Hawk	4001	1.7	1.5, 1.9
Green-winged Teal	786	-0.3	-2.6, 1.0	Ferruginous Hawk	485	1.3	0.3, 2.1
Canvasback	294	1.1	-3.7, 3.7	Golden Eagle	662	0.0	-0.9, 0.7
Redhead	442	1.2	-1.6, 3.2	American Kestrel	3418	-1.5	-2.5, -1.1
Ring-necked Duck	472	2.8	-2.6, 6.5	Merlin	547	3.1	1.1, 4.4
Lesser Scaup	493	-2.1	-6.8, -0.1	Prairie Falcon	550	1.0	-0.1, 2.0
Bufflehead	240	2.6	-0.7, 4.5	King Rail	90	-4.0	-6.6, -1.5
Common Goldeneye	331	1.0	-1.3, 2.9	Virginia Rail	392	1.3	-2.8, 3.2
Barrow's Goldeneye	97	-1.4	-3.8, 0.8	Common Gallinule	265	-1.3	-2.9, 0.3
Hooded Merganser	413	4.5	1.1, 8.2	American Coot	1026	0.2	-2.0, 1.8
Common Merganser	855	-1.8	-4.7, 0.0	Sandhill Crane	674	5.3	3.5, 6.3
Red-breasted Merganser	79	-7.6	-30.9, -1.0	Killdeer	4060	-1.2	-1.6, -1.0
Ruddy Duck	456	1.0	-1.9, 4.7	Mountain Plover	81	-3.0	-7.8, -0.4
Common Loon	831	0.9	-0.3, 1.9	Black-necked Stilt	281	2.8	0.9, 4.9
Pied-billed Grebe	1070	0.3	-2.6, 1.7	American Avocet	461	-0.1	-3.2, 1.5
Horned Grebe	182	-1.8	-3.8, 0.0	Long-billed Curlew	436	0.1	-1.8, 0.9
Red-necked Grebe	189	0.2	-1.1, 1.5	Marbled Godwit	332	-0.2	-0.8, 0.5
Eared Grebe	303	-0.2	-10.2, 3.3	Wilson's Snipe	1714	0.3	-0.2, 0.9
American White Pelican	398	5.9	1.3, 9.1	American Woodcock	612	-0.4	-2.0, 2.4
Double-crested Cormorant	1130	3.6	-11.7, 5.8	Ring-billed Gull	1231	3.0	0.7, 9.0
American Bittern	1108	-0.6	-2.6, 0.4	California Gull	398	-1.8	-5.8, 1.8
Great Blue Heron	3421	0.8	0.5, 1.1	Herring Gull	648	-3.8	-23.0, -2.0
Cattle Egret	844	-1.0	-2.0, -0.3	Glaucous-winged Gull	55	1.0	-1.4, 3.2
Black-crowned Night-Heron	785	-0.4	-3.2, 1.0	Great Black-backed Gull	153	-2.6	-15.5, 2.2

Downloaded from https://academic.oup.com/ajph/article/103/11/2023/1211111 by guest on 20 March 2023



Species Group: *Temperate Migrant Birds*



Long-term Annual Population Change (1966-2011)

Species	N	%/Yr	2.5%-97.5%	Species	N	%/Yr	2.5%-97.5%
Pine Warbler	1359	1.0	0.7, 1.3	Lazuli Bunting	754	0.0	-0.7, 0.5
Common Yellowthroat	3683	-1.0	-1.2, -0.8	Red-winged Blackbird	4223	-0.9	-1.1, -0.7
Hepatic Tanager	51	2.2	-0.5, 3.9	Eastern Meadowlark	2498	-3.4	-19.8, -3.1
Green-tailed Towhee	445	-0.4	-1.0, 0.1	Western Meadowlark	2029	-1.3	-1.5, -1.0
Spotted Towhee	980	0.1	-0.3, 0.5	Yellow-headed Blackbird	1024	-0.3	-1.6, 0.6
Eastern Towhee	2025	-1.4	-1.5, -1.2	Rusty Blackbird	231	-4.9	-8.1, -1.6
Cassin's Sparrow	348	-0.5	-2.3, 0.5	Brewer's Blackbird	1604	-2.2	-2.6, -1.8
Bachman's Sparrow	263	-3.1	-4.1, -2.1	Common Grackle	3308	-1.7	-1.8, -1.5
Chipping Sparrow	3654	-0.5	-0.9, -0.3	Bronzed Cowbird	116	0.2	-1.5, 2.1
Clay-colored Sparrow	817	-1.4	-1.8, -1.0	Brown-headed Cowbird	4273	-0.6	-0.9, -0.4
Brewer's Sparrow	673	-0.4	-1.2, 0.8	Scott's Oriole	223	-0.3	-1.3, 0.6
Field Sparrow	2166	-2.4	-54.5, -2.2	Pine Grosbeak	244	-2.4	-7.6, 0.3
Black-chinned Sparrow	92	-2.0	-4.0, 0.1	Purple Finch	1381	-1.5	-2.2, -1.0
Vesper Sparrow	2220	-0.9	-1.2, -0.6	Cassin's Finch	459	-2.8	-3.9, -1.7
Lark Sparrow	1578	-0.9	-1.4, -0.5	House Finch	2989	0.2	-0.3, 0.6
Black-throated Sparrow	432	-1.1	-2.0, 0.4	Red Crossbill	798	-1.2	-10.3, 0.8
Sage Sparrow	374	-0.1	-1.4, 1.5	White-winged Crossbill	369	2.6	-7.1, 7.6
Lark Bunting	534	-4.0	-5.8, -2.2	Pine Siskin	1387	-3.8	-5.8, -2.4
Savannah Sparrow	2248	-1.2	-1.6, -0.9	Lawrence's Goldfinch	85	-0.3	-2.7, 2.1
Grasshopper Sparrow	2131	-2.5	-3.9, -2.0	American Goldfinch	3285	-0.1	-0.3, 0.1
Baird's Sparrow	209	-3.0	-4.6, -1.6	Evening Grosbeak	1007	-5.8	-23.6, -3.9
Henslow's Sparrow	360	-0.7	-2.1, 0.5				
Le Conte's Sparrow	363	-1.7	-3.3, -0.1				
Fox Sparrow	431	0.2	-1.8, 1.9				
Song Sparrow	3228	-0.7	-0.9, -0.5				
Lincoln's Sparrow	844	-1.1	-2.6, 0.5				
Swamp Sparrow	1195	1.0	-0.2, 1.9				
White-throated Sparrow	1035	-0.6	-1.1, 0.0				
White-crowned Sparrow	508	-0.8	-1.4, -0.2				
Dark-eyed Junco	1568	-1.3	-1.9, -0.8				
McCown's Longspur	112	-5.3	-9.1, -2.9				
Chestnut-coll Longspur	214	-4.3	-5.2, -3.4				

Downloaded from https://academic.oup.com/condor/advance-article-abstract/doi/10.1093/condor/ndz011/5364977/pdf by guest on 26 March 2023



Species Group: *Neotropical Migrant Birds*



General Information

Primary Bird Conservation Regions

- Species in this secondary grouping occur in all Bird Conservation Regions

Total Number of Species

- 184

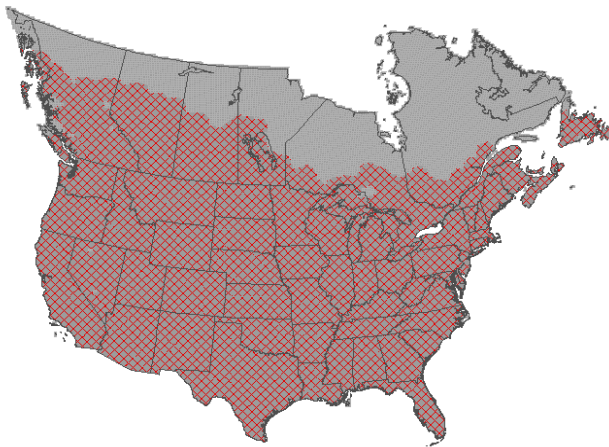
Percentage of Species with BBS Results

- 70.7

Average Percentage of Range in BBS Survey Area

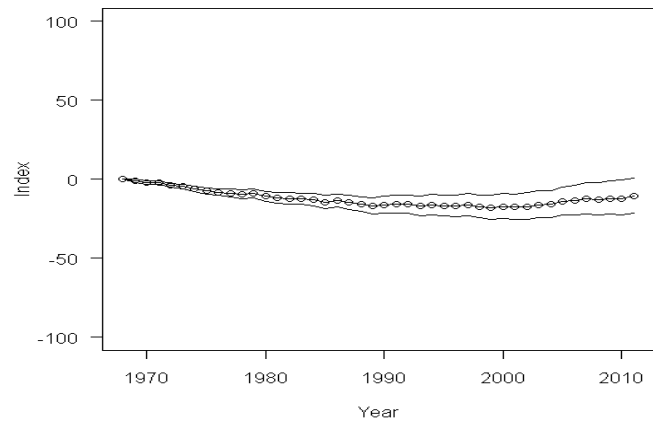
- 69.7

Locale Map For Group

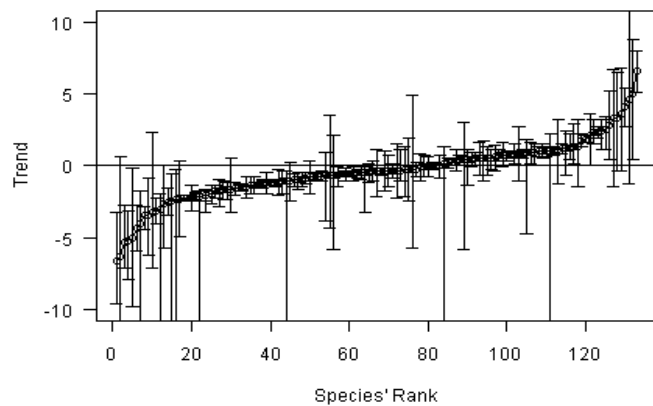


Population Change Summary			
N of Species = 133			
Group	Time Period	Total % Change	95% Credible Interval
Neotropical Migrant Birds	1968-2011	-10.5	-21.1, 1.0

Composite Change for Species Group



Long-term Population Trends (1966-2011)





Species Group: *Neotropical Migrant Birds*



Long-term Annual Population Change (1966-2011)

Species	N	%/Yr	2.5%-97.5%	Species	N	%/Yr	2.5%-97.5%
Blue-winged Teal	1241	0.1	-18.1, 1.4	Caspian Tern	222	0.4	-6.0, 3.0
Cinnamon Teal	478	-2.5	-20.7, -0.6	Black Tern	544	-2.7	-26.9, -0.8
Anhinga	222	1.3	0.1, 2.9	Common Tern	266	-0.7	-4.4, 3.6
Least Bittern	160	-0.3	-2.5, 2.0	Royal Tern	65	4.7	-1.3, 14.0
Great Egret	1007	2.5	1.2, 3.5	Black Skimmer	64	-5.1	-10.0, -0.2
Snowy Egret	498	1.4	-1.5, 3.2	Yellow-billed Cuckoo	2324	-1.5	-1.8, -1.3
Little Blue Heron	665	-1.2	-2.1, -0.3	Black-billed Cuckoo	1662	-3.1	-13.0, -2.0
Tricolored Heron	188	-0.4	-1.8, 1.0	Lesser Nighthawk	199	1.0	-18.9, 2.2
Green Heron	2238	-1.6	-1.8, -1.3	Common Nighthawk	2486	-2.2	-11.1, -1.7
Yellow-cr night-Heron	399	-0.4	-2.2, 1.1	Chuck-will's-widow	752	-2.2	-2.5, -1.9
Glossy Ibis	96	3.4	-0.4, 6.6	Eastern Whip-poor-will	828	-2.8	-13.0, -2.2
White-faced Ibis	172	5.1	0.4, 9.0	Black Swift	122	-6.8	-9.8, -3.3
Turkey Vulture	3235	2.4	2.0, 2.8	Chimney Swift	2522	-2.3	-2.5, -2.1
Osprey	988	2.5	1.1, 3.3	Vaux's Swift	265	-1.0	-2.6, 0.3
Swallow-tailed Kite	115	6.7	5.3, 8.2	Ruby-throated Hummingbird	2270	1.9	1.6, 2.2
Mississippi Kite	429	0.5	-0.6, 1.6	Black-chinned Hummingbird	423	1.3	0.4, 2.2
Broad-winged Hawk	1466	0.9	0.1, 1.6	Calliope Hummingbird	218	-0.4	-1.5, 0.7
Swainson's Hawk	1107	0.7	0.3, 1.2	Broad-tailed Hummingbird	293	-1.7	-2.4, -1.0
Peregrine Falcon	142	3.3	-1.5, 6.8	Rufous Hummingbird	345	-2.0	-2.7, -1.4
Sora	989	0.5	-1.1, 1.8	Allen's Hummingbird	55	-4.5	-6.1, -2.8
Purple Gallinule	55	-2.7	-5.8, 0.0	Olive-sided Flycatcher	1232	-3.5	-4.6, -2.9
Spotted Sandpiper	1816	-1.4	-2.0, -0.8	Western Wood-Pewee	1223	-1.7	-2.4, -1.2
Solitary Sandpiper	102	-0.7	-6.0, 2.1	Eastern Wood-Pewee	2464	-1.3	-1.5, -1.2
Greater Yellowlegs	105	3.7	-0.4, 6.9	Yellow-bell Flycatcher	457	2.1	0.0, 3.7
Willet	496	-0.4	-1.1, 1.2	Acadian Flycatcher	1292	-0.4	-0.7, -0.1
Lesser Yellowlegs	134	-5.3	-8.1, -3.3	Alder Flycatcher	1313	-1.2	-2.0, -0.5
Upland Sandpiper	989	0.5	0.0, 1.0	Willow Flycatcher	1784	-1.6	-2.1, -1.2
Wilson's Phalarope	573	-0.7	-3.9, 0.9	Least Flycatcher	1774	-1.8	-2.3, -1.4
Laughing Gull	202	2.8	0.4, 5.3	Hammond's Flycatcher	472	0.8	0.1, 1.6
Franklin's Gull	349	-4.2	-12.1, -1.8	Dusky Flycatcher	571	-0.1	-1.1, 0.8
Least Tern	156	-3.3	-7.2, 2.3	Cordilleran & Pac-sl Flyc	648	-0.7	-1.5, -0.1
Gull-billed Tern	38	-0.3	-5.8, 5.0	Great Crested Flycatcher	2593	0.0	-0.2, 0.1

Downloaded from https://academic.oup.com/monographs/advance-article-abstract/doi/10.1093/monographs/monograph1/10000000/10000000 by guest on 26 March 2023



Species Group: *Neotropical Migrant Birds*



Long-term Annual Population Change (1966-2011)

Species	N	%/Yr	2.5%-97.5%
Bobolink	1565	-2.1	-3.3, -1.7
Orchard Oriole	2006	-0.8	-1.1, -0.5
Hooded Oriole	138	0.9	-1.1, 2.8
Bullock's Oriole	1044	-0.6	-1.1, -0.2
Baltimore Oriole	2206	-1.2	-1.6, -1.0