

Supplementary Materials

Effect of Paclitaxel Drug-coated Balloon Angioplasty of Infrapopliteal Lesions on Mortality

Tanja Böhme, MD¹; Ulrich Beschorner, MD¹; Elias Noory, MD¹; Miriam Molitor, MD¹; Thomas Nührenberg, MD¹; Franz-Josef Neumann, MD¹; and Thomas Zeller, MD¹

¹Kardiologie und Angiologie II, Universitäts-Herzzentrum Freiburg-Bad Krozingen, Bad Krozingen, Germany

Citation: Tex Heart Inst J 2022;49(6):e217560.
doi: 10.14503/THIJ-21-7560

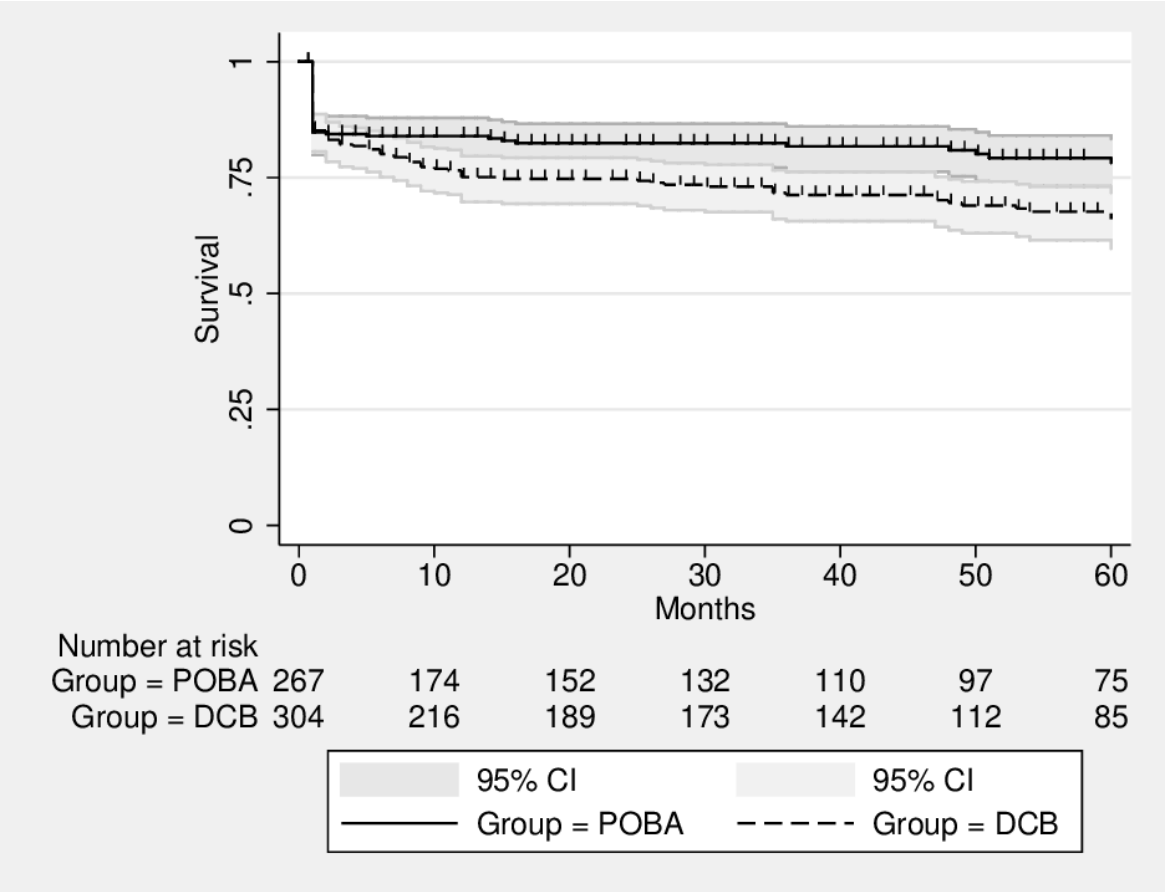
Corresponding author:

Dr. Tanja Böhme, Abteilung Angiologie und Kardiologie II, Universitäts-Herzzentrum Freiburg-Bad Krozingen, Südring 15, 79189 Bad Krozingen, Germany

E-mail: tanja.boehme@universitaets-herzzentrum.de

SUPPLEMENT TABLE I Predictors of death entire cohort			
Stepwise forward			
	OR	95%-CI	P-Value
Treatment type	0.276	0.131-0.580	<0.001
Age (per year)	1.083	1.041-1.126	<0.001
Sex			
Cerebral vascular disease			
Coronary heart disease			
Stroke	5.184	1.693-15.868	0.002
Smoker			
Renal insufficiency	1.224	0.591-2.527	<0.001
Hypertension			
Hyperlipidemia			
Diabetes mellitus			
CLI	4.138	1.567-10.928	0.002
CI = confidence interval; CLI = critical limb ischemia; OR = odds ratio Statistical significance was set as $P < 0.05$.			

SUPPLEMENT TABLE II Predictors of death entire cohort			
Stepwise backward			
	OR	95%-CI	P-Value
Treatment type	0.295	0.136-0.640	0.001
Age (per year)	1.083	1.040-1.128	<0.001
Sex			
Cerebral vascular disease			
Coronary heart disease	2.229	1.020-4.875	0.040
Stroke	4.897	1.600-14.989	0.002
Smoker			
Renal insufficiency	1.351	0.629-2.900	<0.001
Hypertension			
Hyperlipidemia	0.392	0.164-0.939	0.032
Diabetes mellitus			
CLI	3.629	1.354-9.724	0.007
CI = confidence interval; CLI = critical limb ischemia; OR = odds ratio Statistical significance was set as $P < 0.05$.			



Supplemental Fig. 1 Kaplan-Meier plot of amputation-free survival for POBA and DCB-group.

DCB = drug-coated balloon; POBA = plain old balloon angioplasty.
P from log-rank test = 0.288. Statistical significance was set as *P*<0.05.